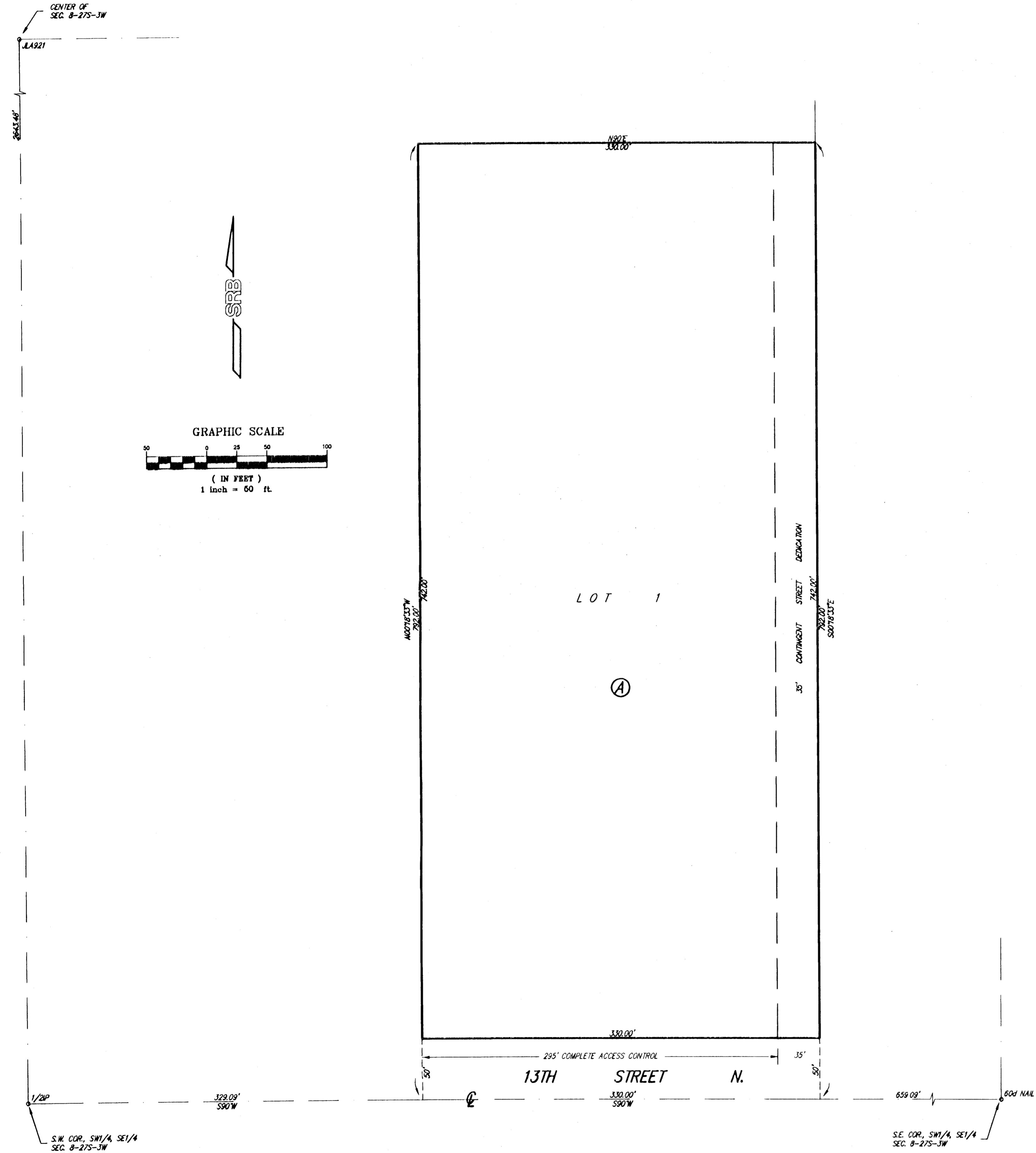


GORGES ACRES

SEDGWICK COUNTY, KANSAS



State of Kansas) SS
Sedgwick County)

We, Savoy, Ruggles & Bohm, P.A., Surveyors in aforesaid county and state do hereby certify that, under the supervision of the undersigned, we have surveyed and platted "GORGES ACRES", Sedgwick County, Kansas and that the accompanying plat is a true and correct exhibit of the property surveyed, described as follows:

Beginning at the S.E. Corner of the W1/2 of the W1/2 of the SE1/4 of Section 8, Twp. 27-S, R-3-W of the 6th P.M., Sedgwick County, Kansas; thence S90°W, along the south line of said SE1/4, 330 feet; thence N00°18'33"W, parallel with the east line of the W1/2 of the SE1/4, 792 feet; thence N90°E, 330 feet to said east line; thence S00°18'33"E, along said east line, 792 feet to the place of beginning.

All Public easements and dedications being vacated by virtue of K.S.A. 12-512(b).

Savoy, Ruggles & Bohm, P.A.

Date 19 June 2000


 Mock-A. Savoy RLS #788 Surveyor

Know all men by these presents that I, the undersigned, have caused the land described in the surveyors certificate to be platted into a Lot, a Block and a Street to be known as "GORGES ACRES", Sedgwick County, Kansas. The street is hereby dedicated to and for the use of the public. The contingent street dedication is hereby dedicated, contingent upon the dedication of the E1/2 of the Street Right-of-way and the need for the street to serve the property to the north. A drainage plan has been developed for this plat and all drainage easements, rights-of-way, or reserves shall remain at established grades, or as modified with the approval of the City Engineer, and unobstructed to allow for the conveyance of stormwater. Access controls are hereby granted as indicated on the face of the plat.

Sylvester L. Stuhlsatz Joan K. Stuhlsatz
 Sylvester L. Stuhlsatz Joan K. Stuhlsatz

State of Kansas) SS
Sedgwick County)

The foregoing instrument acknowledged before me, this 20th day of June, 2000, by Sylvester L. Stuhlsatz and Joan K. Stuhlsatz, husband and wife.

My App't. Exp. June 21, 2003
Kathleen C. Klein Notary Public



This plat of "GORGES ACRES", Sedgwick County, Kansas, has been submitted to and approved by the Wichita-Sedgwick County Metropolitan Area Planning Commission, Wichita, Kansas.
Dated this _____ day of _____, 2000.

Wichita-Sedgwick County Metropolitan Area Planning Commission

Francis S. Garofalo Chairman

Marvin S. Krout Secretary

State of Kansas) SS
Sedgwick County)

This plat approved and all dedications shown hereon, are hereby accepted by the Board of County Commissioners, Sedgwick County, Kansas, on _____, 2000.

Thomas G. Winters Chairman

James Alford County Clerk

Reviewed in accordance with K.S.A. 58-2005 on this 27th day of June, 2000

Tricia L. Robello Deputy County Surveyor
 Tricia L. Robello, LS #1246

Entered on transfer record this _____ day of _____, 2000.

James Alford County Clerk

State of Kansas) SS
Sedgwick County)

This is to certify that this plat has been filed for record in the office of the Register of Deeds, this _____ day of _____, 2000, at _____ o'clock _____ M. and is duly recorded.

Bill Meek Register of Deeds

Linda Kizzire Deputy

SRB 924 NORTH MAIN 316-264-8008
 WICHITA, KANSAS 67203 FAX 264-4521
 http://www.feet.com/~srb E-mail: srb@feet.com

DWG FILE: 01655FF-R.C.
PROJECT NO. 00001655P

SAVOY, RUGGLES & BOHM, P.A.
ENGINEERING & SURVEYING