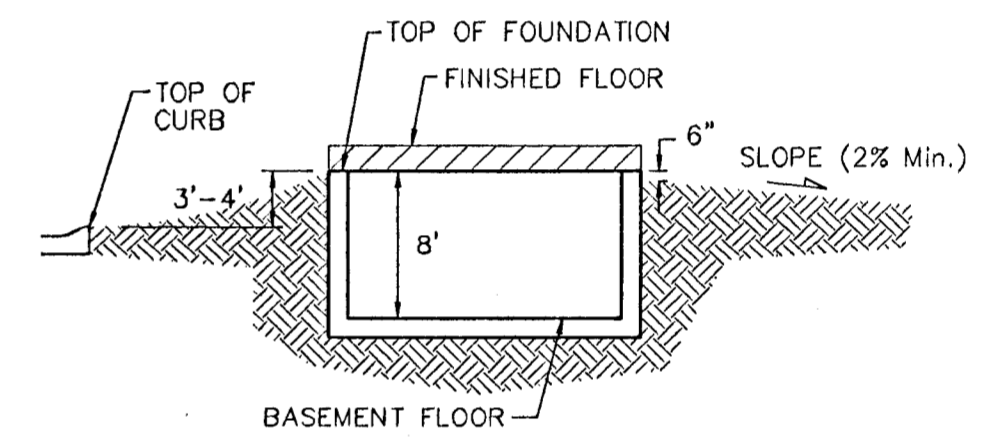


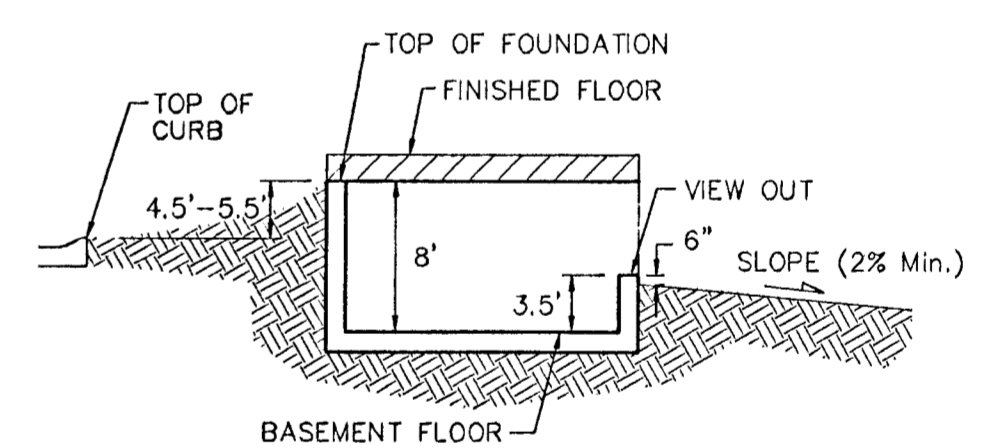
SCALE: 1" = 60'  
 • = Iron

**BENCHMARK:**

City Disc - 41.60' North and 69.00' East of  
 Intersection of Hoover and MacArthur.  
 Elev. = 1308.62 NGVD29  
 (= 121.22 City Datum)



**TYPICAL NON-VIEW OUT DETAIL**  
 NO SCALE



**TYPICAL VIEW OUT DETAIL**  
 NO SCALE

**NOTES:**

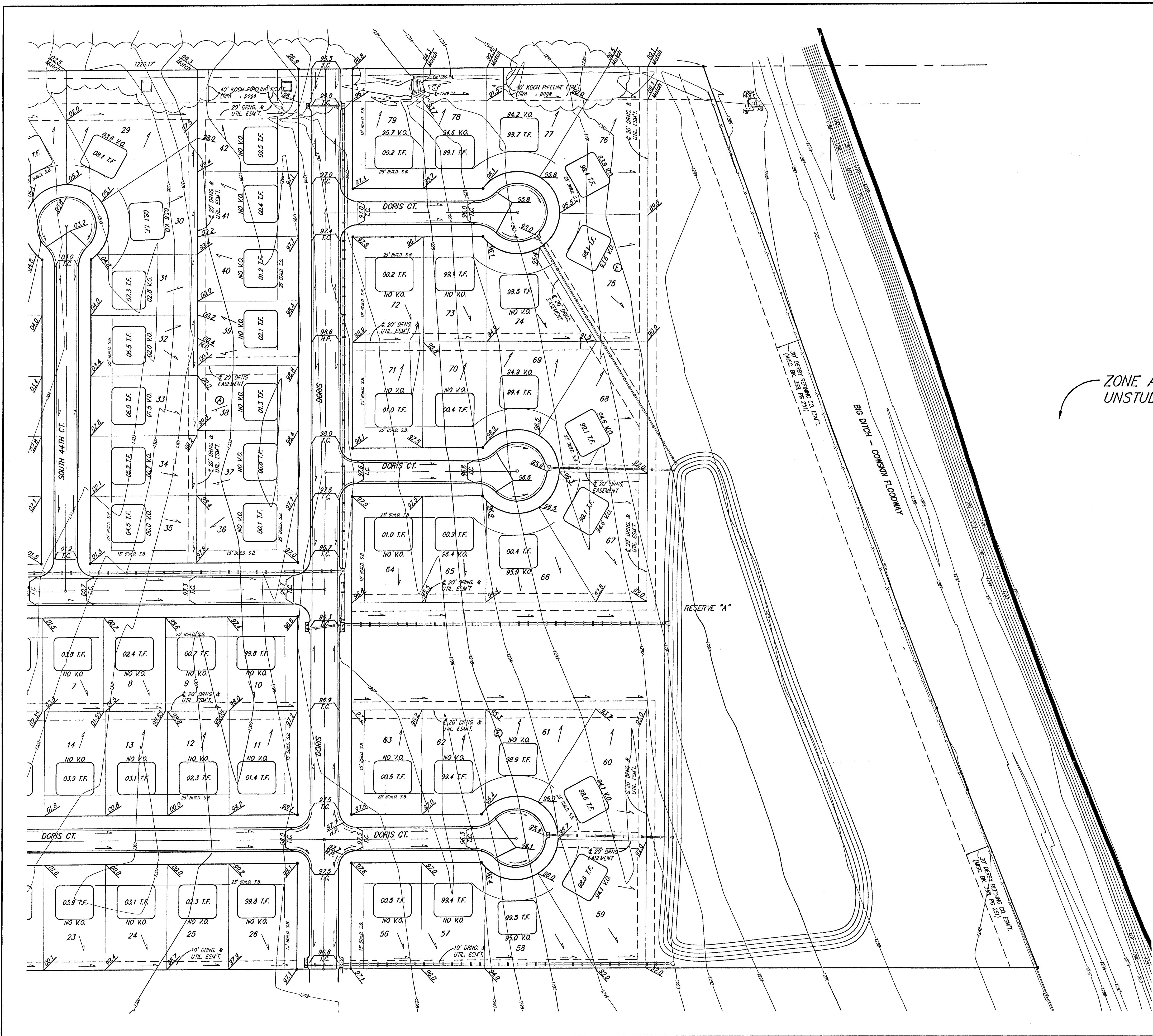
- Proposed Top of Foundation Elevations Are Shown On Plans. Contractor to Set Finished Floor Elevations.
- All Street Elevations Shown on Plans Are for Top of Curb (Full-Height).
- This Grading Plan is Designed with View-Outs. Elevations Shown at Rear of House (XX.X V.O.)
- Lot dimensions have been omitted on this plan, refer to the recorded plat for this information.

**GRAY'S 5TH ADDITION**  
**MASTER GRADING PLAN**

**BAUGHMAN COMPANY P.A.**  
 ENGINEERING, SURVEYING, & PLANNING  
 316-262-7271 • 315 ELLIS • WICHITA, KANSAS 67211

DESIGN NBH/BLG	DRAWN BLG	APPROVED	DATE 15NOV2001
PROJECT NUMBER			SHEET <b>1</b> OF <b>2</b>
SCALE NOTED			SCALE NOTED

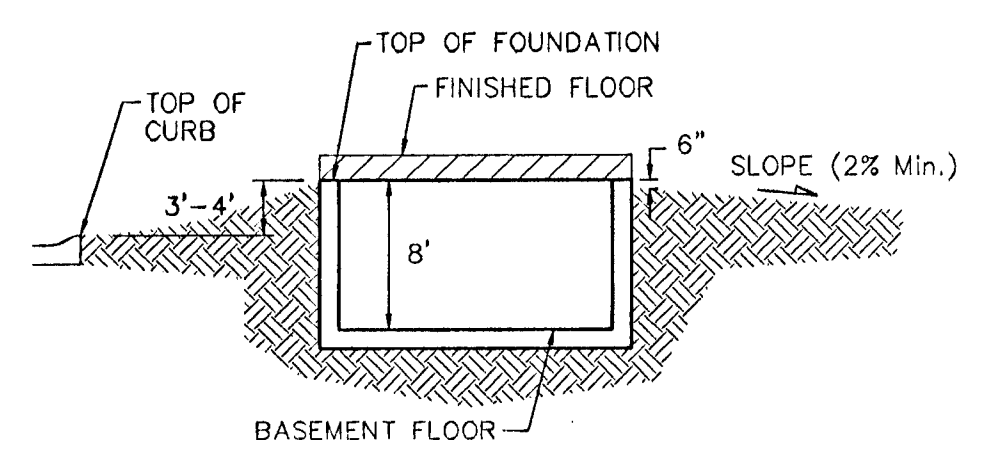
ORANGE.DWG



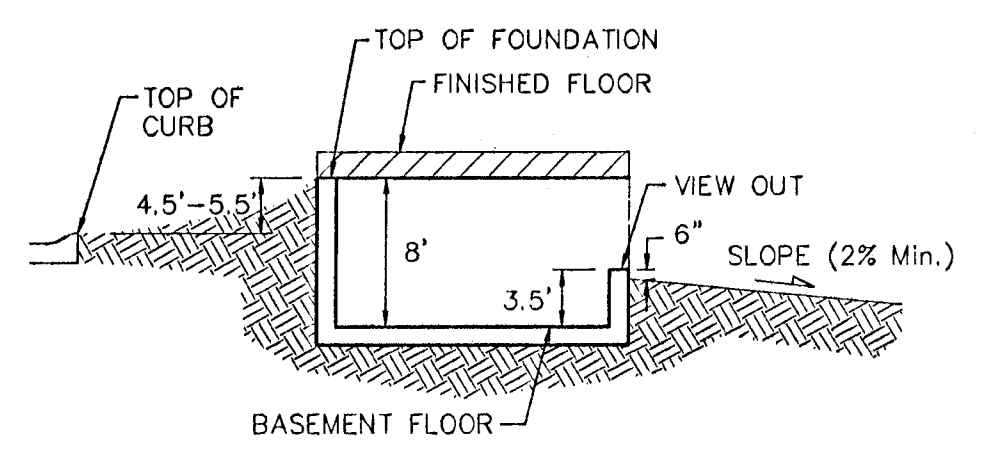
**BENCHMARK:**

City Disc - 41.60' North and 69.00' East of  
 Intersection of Hoover and MacArthur.  
 Elev. = 1308.62 NGVD29  
 (= 121.22 City Datum)

ZONE 1  
 UNSTUL



**TYPICAL NON-VIEW OUT DETAIL**  
 NO SCALE



**TYPICAL VIEW OUT DETAIL**  
 NO SCALE

**NOTES:**

Proposed Top of Foundation Elevations Are Shown On Plans. Contractor to Set Finished Floor Elevations.  
 All Street Elevations Shown on Plans Are for Top of Curb (Full-Height).  
 This Grading Plan is Designed with View-Outs. Elevations Shown at Rear of House (XX.X V.O.).  
 Lot dimensions have been omitted on this plan, refer to the recorded plat for this information.

GRAY'S 5TH ADDITION  
**MASTER GRADING PLAN**

**BAUGHMAN COMPANY P.A.**  
 ENGINEERING, SURVEYING, & PLANNING  
 318-262-7271 • 315 ELLIS • WICHITA, KANSAS 67211

DESIGN NBH/BLG	DRAWN BLG	APPROVED	DATE 15NOV2001	SCALE NOTED	SHEET 2 OF 2
-------------------	--------------	----------	-------------------	----------------	-----------------------