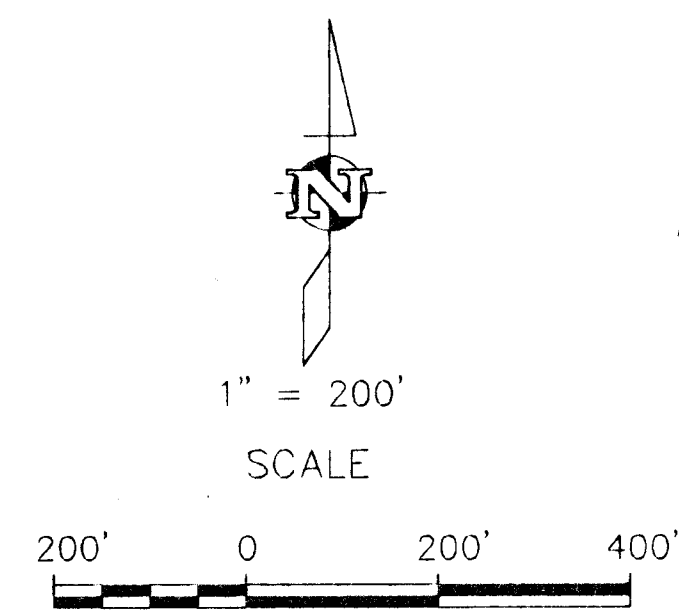


# FOUR OAKS ADDITION SEDGWICK COUNTY, KANSAS

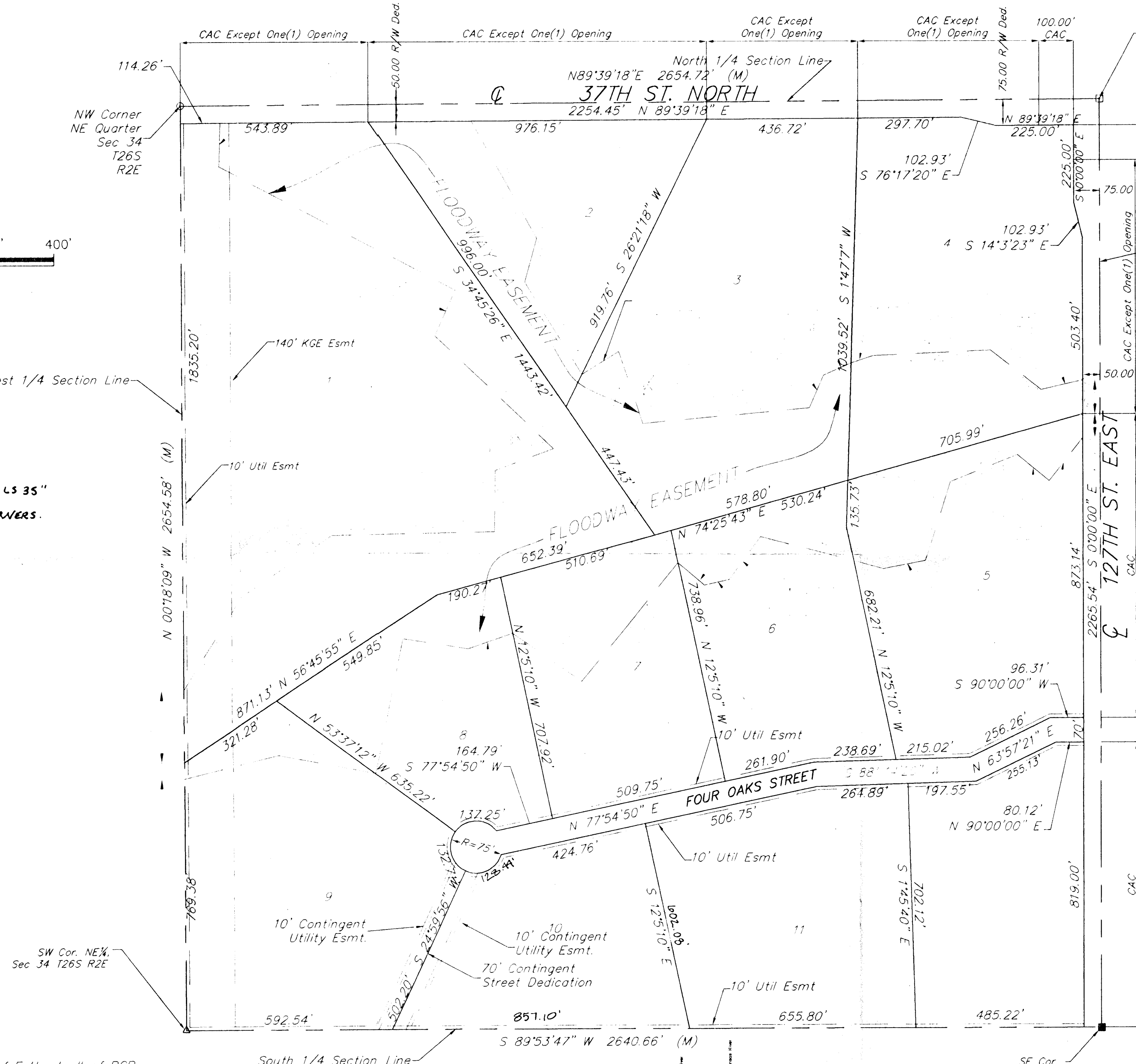
Northeast Quarter of Section 34, Township 26 South, Range 2 East of the 6th. P. M.



### LEGEND

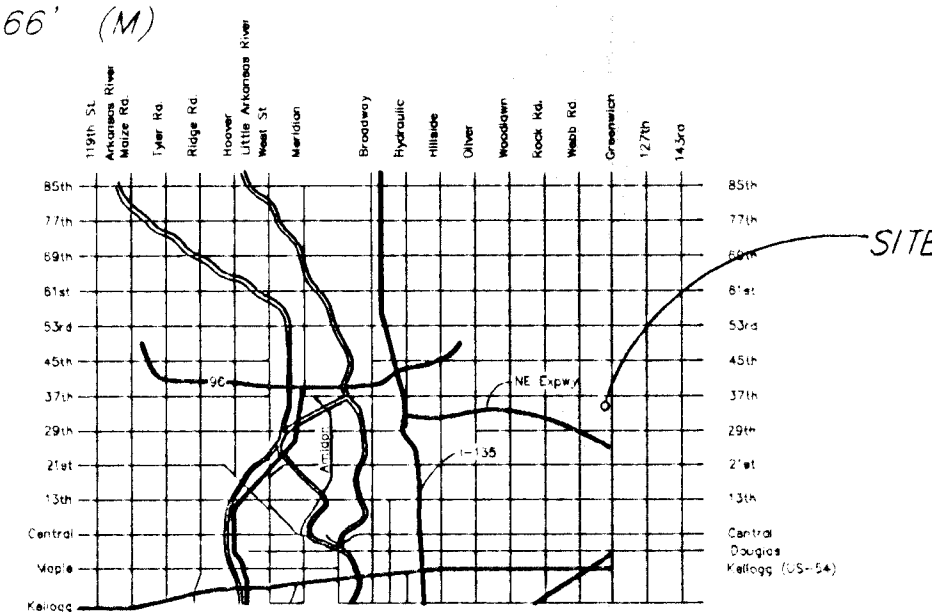
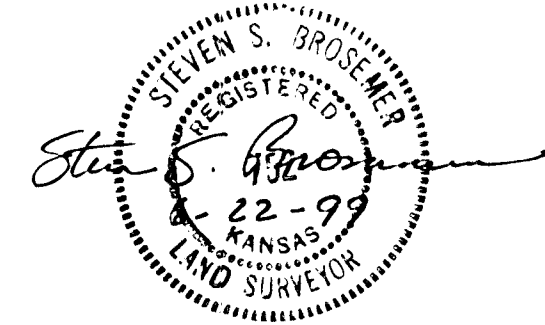
- - 1/2" rebar found
- △ - stone found
- - pipe found

1/2" REBARS WITH "GeoTECH LS 35"  
CAP SET AT ALL LOT CORNERS.



### BENCHMARK.

"X" Cut Top of E Headwall of RCB  
Located SE of NW Crnr. of Sec. 32,  
Township 25S, R1 E  
Elev. 1368.54



LOCATION MAP

I, the undersigned licensed land surveyor in aforesaid county and state, do hereby certify that, under the supervision of the undersigned, we have surveyed and platted "FOUR OAKS ADDITION," an addition to Sedgwick County, Kansas, and that the accompanying plat is a true and correct exhibit of the property surveyed and described as follows:

The Northeast Quarter of Section 34, Township 26 South, Range 2 East of the Sixth Principal Meridian, Sedgwick County, Kansas.

*Steven S. Brosemer*  
Steven S. Brosemer, L. S. 752

Know all men by these presents that we the undersigned property owners of the land set forth in the Surveyor's Certificate, have caused the same to be surveyed and platted into lots and a street, to be known as "FOUR OAKS ADDITION," Sedgwick County, Kansas. The additional right-of-way for the streets are hereby dedicated to and for the use of the public. Easements for the construction and maintenance of public utilities, as indicated, are hereby granted. All abutter's rights of access to or from 127th Street East, over and across the East line of Lots 4, 5 and 12, and to or from 37th Street North, over and across the North line of Lots 1, 2, 3 and 4 are hereby granted to the appropriate governing body; provided however, that Lot 4 shall have access to 127th Street East at one location, and that Lots 1, 2, 3 and 4 shall have access to 37th Street North at one location each, as determined by the appropriate Engineer. No structure shall be constructed on or within the Floodway Easement, nor shall any fill, change of grade, creation of grade, creation of channel or other work be carried on without the approval of the Engineer of the appropriate governing body.

*Jay A. Feist*  
Jay A. Feist, Owner  
Four Oaks L.L.C., Jay A. Feist, Manager

State of Kansas ) ss  
Sedgwick County )

The foregoing instrument was acknowledged before me, this 3 day of June, 1999, by  
*JAY A. FEIST*

*Jeanette Logsdon*, Notary Public  
JEANETTE LOGSDON  
My App't. Exp. 12/17/2001

*Chryesse R. Feist*, Owner  
Four Oaks L.L.C., Chryesse R. Feist, Manager

State of Kansas ) ss  
Sedgwick County )

The foregoing instrument was acknowledged before me, this 3 day of June, 1999, by  
*CHRYESSE R. FEIST*

*Jeanette Logsdon*, Notary Public  
JEANETTE LOGSDON  
My App't. Exp. 12/17/2001

*Keith Hughes*  
Keith Hughes  
First National Bank of Hutchinson

State of Kansas ) ss  
Sedgwick County )

The foregoing instrument was acknowledged before me, this 3 day of June, 1999, by  
*KEITH HUGHES*

*Jeanette Logsdon*, Notary Public  
JEANETTE LOGSDON  
My App't. Exp. 12/17/2001

State of Kansas ) ss  
City of Wichita )

This plat of "FOUR OAKS ADDITION", Wichita, Sedgwick County, Kansas, has been submitted to and approved by the Wichita-Sedgwick County Metropolitan Area Planning Commission, Wichita, Kansas.  
Dated this \_\_\_ day of \_\_\_\_\_, 1999.  
Wichita-Sedgwick County Metropolitan Area Planning Commission.

\_\_\_\_\_, Chair  
*William M. Johnson*  
\_\_\_\_\_, Secretary  
*Marvin S. Krout*

State of Kansas ) ss  
City of Wichita )

This plat approved and all dedications shown hereon accepted by the City Council of the City of Wichita, Kansas, this \_\_\_ day of \_\_\_\_\_, 1999.

\_\_\_\_\_, Mayor  
*Bob Knight*  
\_\_\_\_\_, City Clerk  
*Pat Burnett*

Entered on transfer record this \_\_\_ day of \_\_\_\_\_, 1999.

\_\_\_\_\_, County Clerk  
*James Alford*

State of Kansas ) ss  
Sedgwick County )

The dedications shown on this plat, if any, are hereby accepted by the Board of County Commissioners, Sedgwick County, Kansas, on this \_\_\_ day of \_\_\_\_\_, 1999.

\_\_\_\_\_, Chairman  
*Bill Hancock*  
\_\_\_\_\_, Commissioner  
*Betsy Gwin*  
\_\_\_\_\_, Commissioner  
*Tom Winters*  
\_\_\_\_\_, Commissioner  
*Carolyn McGinn*  
\_\_\_\_\_, Commissioner  
*Ben Sciortino*

Entered on transfer record this \_\_\_ day of \_\_\_\_\_, 1999.  
\_\_\_\_\_, County Clerk.

State of Kansas ) ss  
Sedgwick County )

This is to certify that this instrument was filed for record in the Register of Deeds Office, at: \_\_\_\_\_ on the \_\_\_ day of \_\_\_\_\_, 1999, and is duly recorded.

\_\_\_\_\_, Register of Deeds  
*Bill Weck*  
\_\_\_\_\_, Deputy  
*Linda Kizzire*

Date Plat Prepared: 12/14/98



**AUSTIN** P.A.  
ENGINEERING SERVICES  
754 S. 14th St., Suite 210, Wichita, KS 67211  
316-262-1281 Fax: 316-262-8773