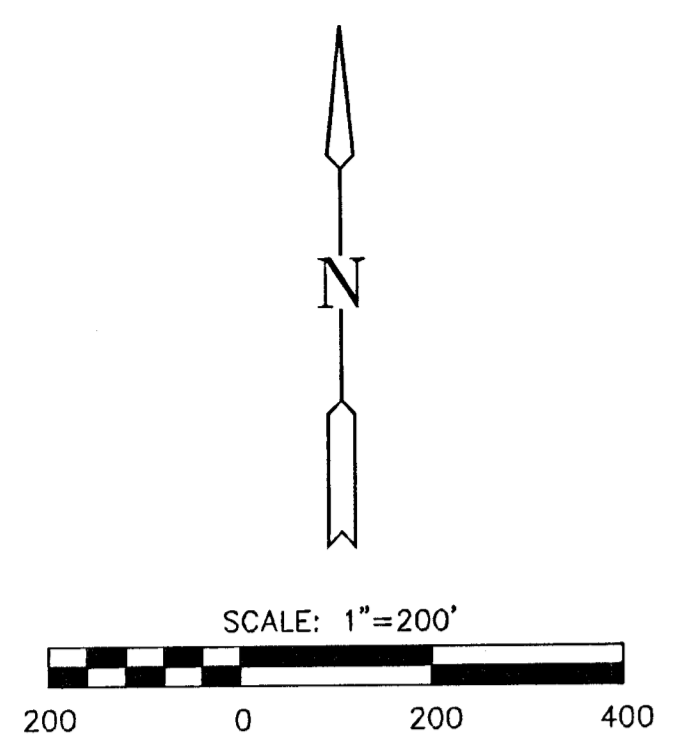


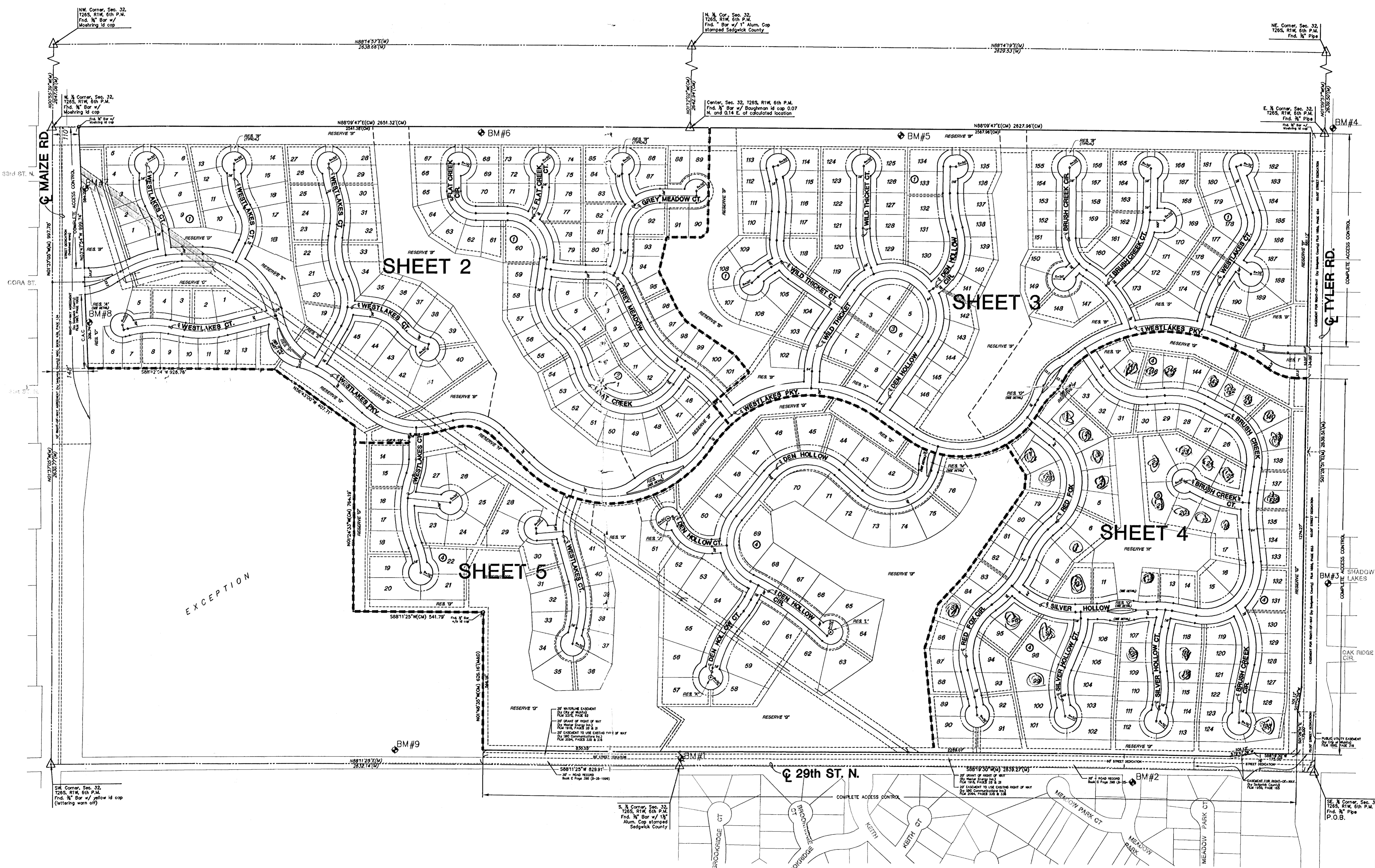
Final 5/29/02

FINAL PLAT FOX RIDGE ADDITION AN ADDITION TO WICHITA, SEDGWICK COUNTY, KANSAS



- BENCHMARKS**
- BM#1 C.O.W. disc 0.5 miles east of Maize Rd. on 29th St. N. 25' +/- N. of centerline of 29th St. Elev. = 160.86
 - BM#2 Square cut top of curb N. end of island at Meadow Park, S. Elev. = 168.33
 - BM#3 Square cut top curb W. end of island at Shadow Lakes, East side of Tyler Rd. Elev. = 175.81
 - BM#4 RR spike in W. face of South H-pole East of Tyler Rd., 3320 N. Tyler Rd. Elev. = 175.53
 - BM#5 RR Spike in South face of South H-pole 3rd H-pole West of Tyler Rd. and 1/2 Mile N. of 29th St. N. Elev. = 169.24
 - BM#6 RR Spike in South face of South H-pole 6th H-pole West of Tyler Rd. and 1/2 Mile N. of 29th St. N. Elev. = 166.37
 - BM#7 PK nail (point numbered 201) in asphalt on bike path 60 feet South of 33rd St. N. on East side of Maize Rd. 28 feet NW. of PP. Elev. = 163.97
 - BM#8 RR spike in W. face of PP East side Maize Rd., 100 feet ± S. of Cora St. Elev. = 165.58
 - BM#9 RR spike in NW face of PP N. side of 29th St. N., 6th PP West of C.O.W. Disc (Disc 1/2 mile East of Maize Rd.) Elev. = 164.55

- LEGEND**
- △ = Found Section Corner
 - = Found Survey Monument
 - = Set 3/8" Rebar w/ MKEC CLS 39 id. cap
 - (M) = Measured
 - (D) = Deeded
 - = Page Match Line



FINAL PLAT

FOX RIDGE ADDITION

AN ADDITION TO WICHITA, SEDGWICK COUNTY, KANSAS

N. 1/4 Cor., Sec. 32,
T26S, R1W, 6th P.M.
Fnd. 1/2" Bar w/ 1" Alum. Cap
stamped Sedgwick County

Center, Sec. 32, T26S, R1W, 6th P.M.
Fnd. 1/2" Bar w/ Baughman id cap 0.07
N. and 0.14 E. of calculated location

MINIMUM PAD ELEVATIONS (LOWEST OPENINGS)			
LOT	BLOCK	ELEVATION (CITY DATUM)	ELEVATION (NGVD)
5	1	165.6	1353.0
6	1	165.4	1352.8
13	1	165.2	1352.6
14	1	165.0	1352.4
27	1	164.9	1352.3
28	1	164.9	1352.3
29	1	164.9	1352.3
30	1	164.9	1352.3
31	1	164.9	1352.3
32	1	164.9	1352.3
33	1	164.9	1352.3
34	1	164.9	1352.3
35	1	164.9	1352.3
36	1	164.9	1352.3
37	1	164.9	1352.3
38	1	164.9	1352.3
39	1	164.9	1352.3
40	1	164.9	1352.3
41	1	164.9	1352.3
46	1	164.9	1352.3
47	1	164.9	1352.3
48	1	164.9	1352.3
49	1	164.9	1352.3
50	1	164.9	1352.3
51	1	164.9	1352.3
52	1	164.9	1352.3
53	1	164.9	1352.3
54	1	164.9	1352.3
55	1	164.9	1352.3
56	1	164.9	1352.3
57	1	164.9	1352.3
58	1	164.9	1352.3
59	1	164.9	1352.3
60	1	164.9	1352.3
61	1	164.9	1352.3
62	1	164.9	1352.3
63	1	164.9	1352.3
64	1	164.9	1352.3
65	1	164.9	1352.3
66	1	164.9	1352.3
67	1	165.3	1352.7
68	1	165.7	1353.1
73	1	166.6	1354.0
74	1	167.1	1354.5
85	1	167.8	1355.2
86	1	167.8	1355.2
88	1	167.8	1355.2
89	1	167.8	1355.2
90	1	167.8	1355.2
91	1	167.8	1355.2
92	1	167.8	1355.2
93	1	167.8	1355.2
94	1	167.8	1355.2
95	1	167.8	1355.2
96	1	167.8	1355.2
97	1	167.8	1355.2
98	1	167.8	1355.2
99	1	167.8	1355.2
100	1	167.8	1355.2
101	1	167.8	1355.2

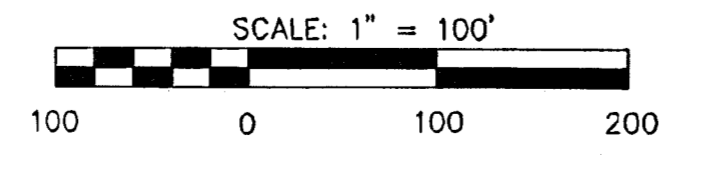


CURVE TABLE			
CURVE	LENGTH	RADIUS	DELTA
C1	162.91'	300.00'	Δ=31°06'48"
C2	269.61'	500.00'	Δ=30°53'40"
C3	63.75'	200.00'	Δ=18°15'43"
C4	97.10'	200.00'	Δ=27°49'01"
C5	402.31'	305.00'	Δ=75°34'36"
C6	149.55'	150.00'	Δ=57°07'30"
C7	167.09'	300.00'	Δ=31°54'44"
C8	174.13'	400.00'	Δ=24°56'33"
C9	177.24'	400.00'	Δ=25°23'14"
C10	266.46'	300.00'	Δ=50°53'24"
C11	115.50'	350.00'	Δ=18°26'01"
C12	139.10'	200.00'	Δ=32°02'20"
C13	181.52'	300.00'	Δ=34°40'04"
C14	140.98'	300.00'	Δ=26°55'29"
C15	114.54'	315.00'	Δ=20°50'00"
C16	156.03'	200.00'	Δ=44°41'54"
C17	129.47'	199.00'	Δ=37°16'38"
C18	303.69'	300.00'	Δ=59°00'00"
C19	206.43'	200.00'	Δ=59°08'12"
C20	835.36'	485.00'	Δ=98°41'06"
C21	774.35'	500.00'	Δ=88°44'02"
C22	203.44'	647.00'	Δ=18°00'55"
C23	505.47'	220.00'	Δ=131°38'34"
C24	165.75'	250.00'	Δ=37°59'14"
C25	209.38'	200.00'	Δ=59°58'56"
C26	145.93'	297.00'	Δ=32°11'11"
C27	114.07'	103.00'	Δ=53°27'23"
C28	252.86'	450.00'	Δ=32°11'42"
C29	14.95'	650.00'	Δ=1°19'05"
C30	283.33'	165.00'	Δ=98°23'09"
C31	141.37'	90.00'	Δ=90°00'00"
C32	134.13'	220.00'	Δ=34°56'00"
C33	99.84'	200.00'	Δ=28°36'08"
C34	249.55'	160.00'	Δ=82°21'50"
C35	125.34'	175.00'	Δ=41°02'15"

LINE TABLE		
LINE	LENGTH	BEARING
L1	128.51'	N88°22'55"E
L2	100.32'	N09°50'48"W
L3	59.88'	N28°05'31"W
L4	70.13'	N00°17'30"W
L5	85.63'	S88°09'47"W
L6	85.68'	S24°55'16"W
L7	25.83'	S00°17'30"E
L8	39.68'	N16°15'37"W
L9	210.13'	N73°44'23"E
L10	65.05'	S81°19'04"E
L11	17.78'	N73°17'42"E
L12	21.00'	S18°42'18"E
L13	192.78'	N28°08'24"E
L14	51.07'	N05°46'25"E
L15	97.71'	N85°29'17"W
L16	21.01'	N10°32'25"E
L17	158.52'	S48°43'00"E
L18	77.49'	N73°17'00"E
L19	175.89'	S47°34'48"E
L20	48.10'	S33°44'06"W
L21	72.55'	N41°15'09"W
L22	80.96'	S32°54'42"W
L23	119.75'	N06°32'58"E
L24	21.58'	S83°27'02"E
L25	74.89'	N88°09'47"E
L26	166.75'	N28°22'50"W
L27	131.59'	N68°09'50"E
L28	114.00'	S01°50'10"E
L29	21.00'	S88°09'50"W
L30	15.19'	S33°18'55"W
L31	95.85'	S01°37'05"E
L32	10.49'	N27°24'06"E
L33	65.28'	N01°12'02"W
L34	151.02'	S88°09'47"W
L35	21.00'	S01°50'10"E
L36	18.20'	N42°14'17"W
L37	37.93'	N01°12'02"W

- LEGEND**
- △ = Found Section Corner
 - = Found Survey Monument
 - = Set 3/8" Rebar W/ MKEC CLS 39 id. cap
 - D.E. = Drainage Easement
 - B.S. = Building Setback
 - U.E. = Utility Easement
 - M. = Measured
 - (D) = Deeded
 - = Floodway Reserve

- NOTE**
- There shall be no parking on or along Westlakes Parkway.
 - Temporary Aquila Inc. pipeline (easement shall be vacated according to):
Film _____ Page _____



NW Corner, Sec. 32,
T26S, R1W, 6th P.M.
Fnd. 3/4" Bar w/
Moehring id cap

W. 1/4 Corner, Sec. 32,
T26S, R1W, 6th P.M.
Fnd. 3/4" Bar w/
Moehring id cap

Center, Sec. 32, T26S, R1W, 6th P.M.
Fnd. 1/2" Bar w/
Baughman id cap 0.07
N. and 0.14 E. of calculated location

SW Corner, Sec. 32,
T26S, R1W, 6th P.M.
Fnd. 3/4" Bar
w/ yellow id cap
(lettering warn off)

FINAL PLAT

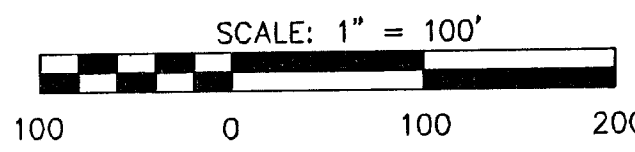
FOX RIDGE ADDITION

AN ADDITION TO WICHITA, SEDGWICK COUNTY, KANSAS

NE Corner, Sec. 32,
T26S, R1W, 6th P.M.
Fnd. 3/4" Pipe

E 1/4 Corner, Sec. 32,
T26S, R1W, 6th P.M.
Fnd. 3/4" Pipe

Center, Sec. 32, T26S, R1W, 6th P.M.
Fnd. 1/2" Bar w/ Baughman id cap 0.07
N. and 0.14 E. of calculated location



LEGEND

- △ = Found Section Corner
- = Found Survey Monument
- = Set 3/4" Rebar w/ MKCC CLS 39 id. cap
- D.E. = Drainage Easement
- B.S. = Building Setback
- U.E. = Utility Easement
- (M) = Measured
- - - = Floodway Reserve/Drainage Esmt.

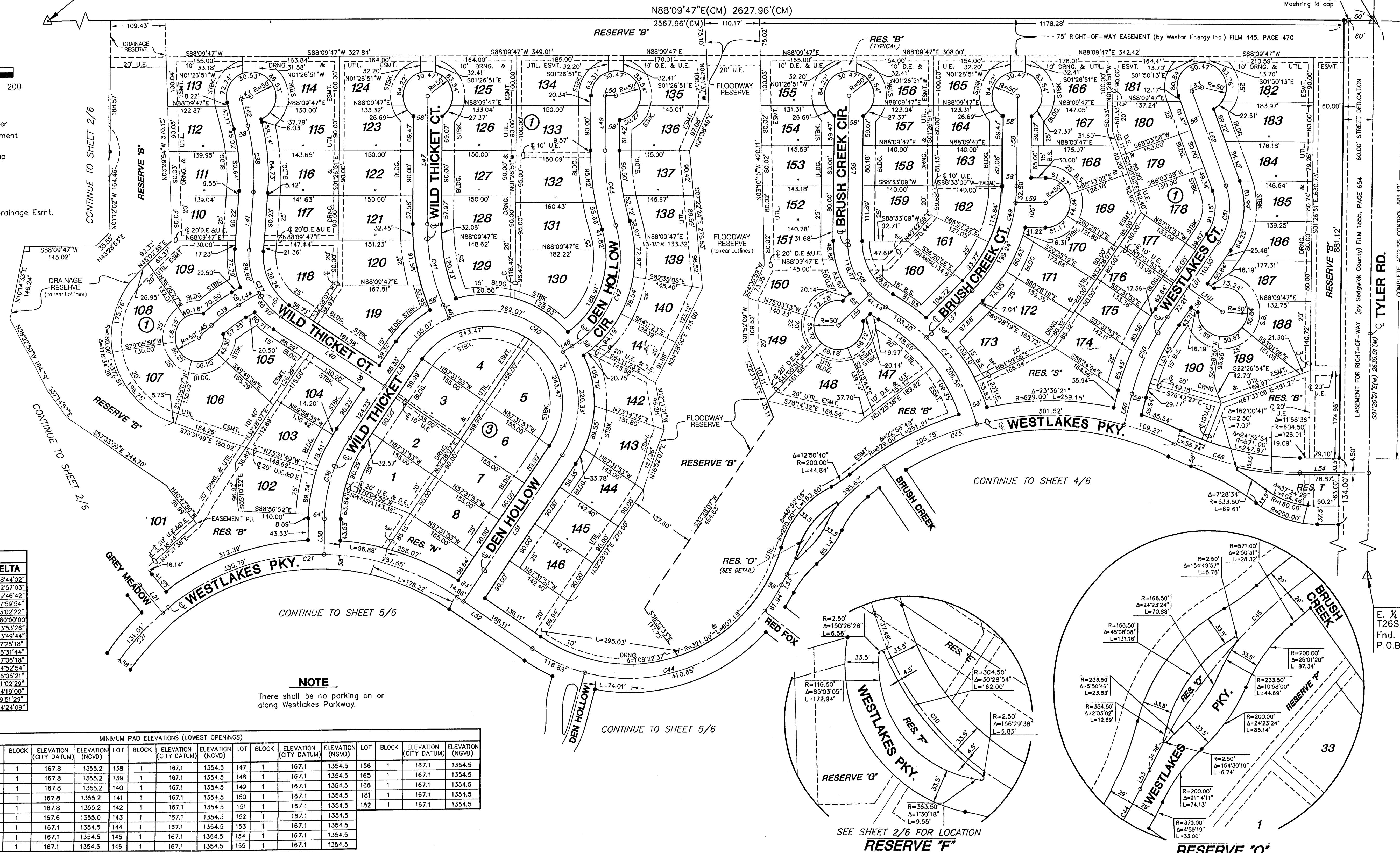
LINE	LENGTH	BEARING
L38	71.56'	S00°28'55"E
L39	212.56'	S32°28'07"W
L40	250.23'	S57°31'53"E
L41	117.01'	S22°14'50"W
L42	55.39'	S15°45'04"E
L43	21.00'	S74°14'56"W
L44	47.14'	N58°01'27"E
L45	36.38'	N44°59'05"E
L46	28.16'	N25°20'17"W
L47	297.78'	S01°28'51"E
L48	21.10'	S54°57'35"W
L49	110.63'	S01°26'51"E
L50	21.00'	S88°09'47"W
L51	355.36'	N32°28'07"E
L52	182.97'	S57°31'53"E
L53	23.61'	N25°56'24"E
L54	138.63'	S88°09'47"W
L55	291.88'	S01°28'51"E
L56	87.51'	S41°31'33"W
L57	132.71'	N42°52'08"E
L58	182.28'	S01°26'51"E
L59	61.13'	N88°09'47"E
L60	64.27'	S12°36'38"W
L61	182.51'	N32°28'07"E
L62	202.97'	N21°56'02"W
L63	21.00'	N68°03'58"E
L101	85.92'	N57°31'53"W

CURVE	LENGTH	RADIUS	DELTA
C21	774.35'	500.00'	Δ=88°44'02"
C36	172.53'	300.00'	Δ=32°57'03"
C37	156.50'	150.00'	Δ=59°46'42"
C38	134.76'	429.00'	Δ=17°39'54"
C39	68.28'	300.00'	Δ=13°02'22"
C40	587.48'	187.00'	Δ=180°00'00"
C41	168.79'	400.00'	Δ=23°53'26"
C42	277.04'	215.00'	Δ=73°49'44"
C43	192.03'	500.00'	Δ=17°25'18"
C44	589.67'	350.00'	Δ=95°31'44"
C45	912.16'	600.00'	Δ=87°06'18"
C46	260.56'	600.00'	Δ=24°52'54"
C47	309.70'	385.00'	Δ=43°02'21"
C48	159.81'	150.00'	Δ=61°02'29"
C49	232.04'	300.00'	Δ=44°19'00"
C50	173.29'	500.00'	Δ=19°51'29"
C51	118.69'	125.00'	Δ=54°24'09"

MINIMUM PAD ELEVATIONS (LOWEST OPENINGS)															
LOT	BLOCK	ELEVATION (CITY DATUM)	ELEVATION (NGVD)	LOT	BLOCK	ELEVATION (CITY DATUM)	ELEVATION (NGVD)	LOT	BLOCK	ELEVATION (CITY DATUM)	ELEVATION (NGVD)	LOT	BLOCK	ELEVATION (CITY DATUM)	ELEVATION (NGVD)
101	1	167.8	1355.2	112	1	167.8	1355.2	138	1	167.1	1354.5	147	1	167.1	1354.5
102	1	167.8	1355.2	113	1	167.8	1355.2	139	1	167.1	1354.5	148	1	167.1	1354.5
103	1	167.8	1355.2	114	1	167.8	1355.2	140	1	167.1	1354.5	149	1	167.1	1354.5
104	1	167.8	1355.2	115	1	167.8	1355.2	141	1	167.1	1354.5	150	1	167.1	1354.5
107	1	167.8	1355.2	125	1	167.8	1355.2	142	1	167.1	1354.5	151	1	167.1	1354.5
108	1	167.8	1355.2	134	1	167.8	1355.0	143	1	167.1	1354.5	152	1	167.1	1354.5
109	1	167.8	1355.2	135	1	167.1	1354.5	144	1	167.1	1354.5	153	1	167.1	1354.5
110	1	167.8	1355.2	136	1	167.1	1354.5	145	1	167.1	1354.5	154	1	167.1	1354.5
111	1	167.8	1355.2	137	1	167.1	1354.5	146	1	167.1	1354.5	155	1	167.1	1354.5

NOTE

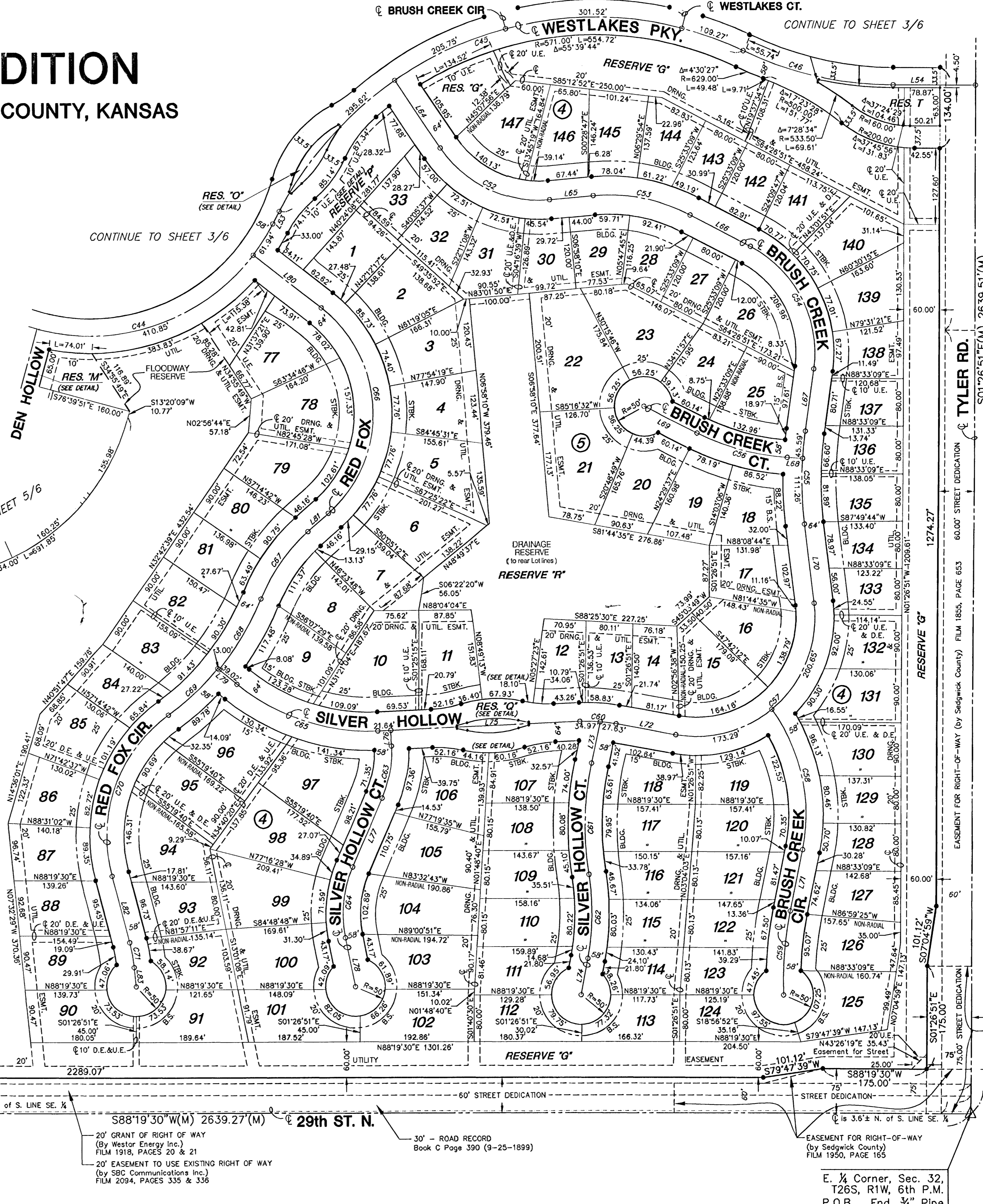
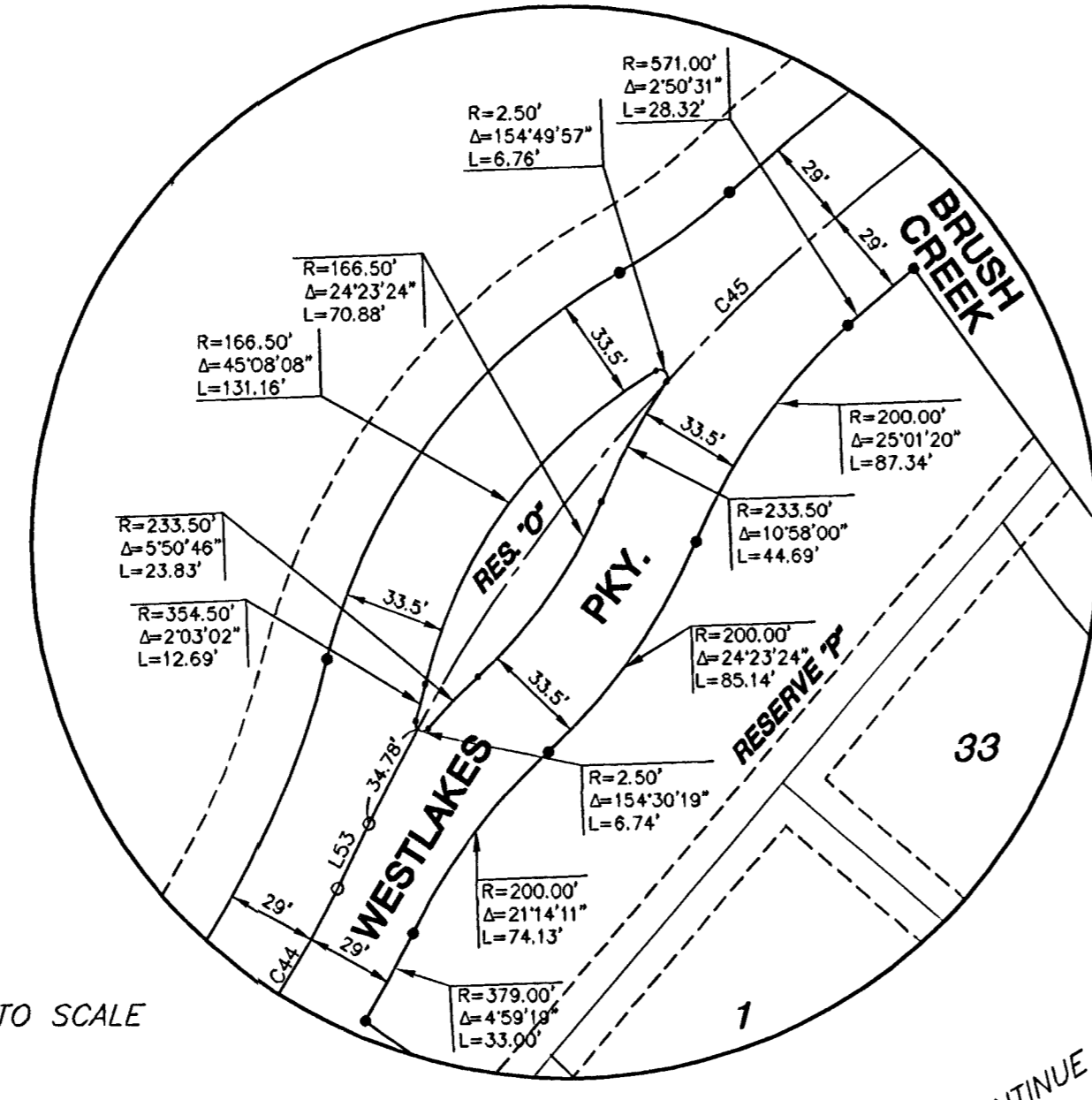
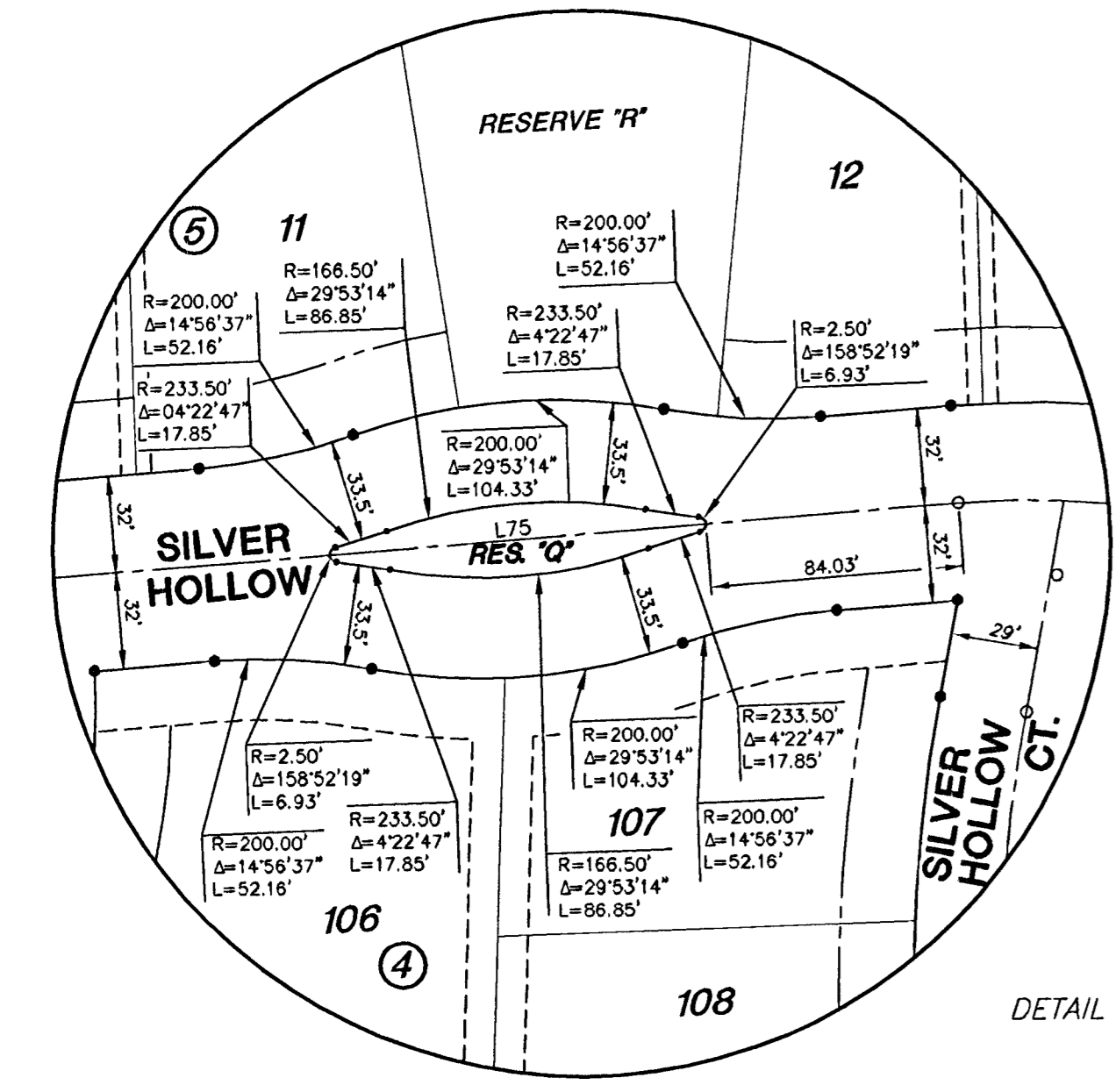
There shall be no parking on or along Westlakes Parkway.



TYLER RD.

E 1/4 Corner, Sec. 32,
T26S, R1W, 6th P.M.
Fnd. 3/4" Pipe
P.O.B.

FINAL PLAT FOX RIDGE ADDITION AN ADDITION TO WICHITA, SEDGWICK COUNTY, KANSAS



LOT	BLOCK	ELEVATION (GTY DATUM)	ELEVATION (NGVD)
77	4	164.9	1352.3
78	4	164.9	1352.3
79	4	164.9	1352.3
80	4	164.9	1352.3
81	4	164.9	1352.3
82	4	164.9	1352.3
83	4	164.9	1352.3
84	4	164.9	1352.3
85	4	164.9	1352.3
86	4	164.9	1352.3
87	4	164.9	1352.3
88	4	164.9	1352.3
89	4	164.9	1352.3
90	4	164.9	1352.3
91	5	167.9	1355.3
92	5	167.9	1355.3
93	5	167.9	1355.3
94	5	167.9	1355.3
95	5	167.9	1355.3
96	5	167.9	1355.3
97	5	167.9	1355.3
98	5	167.9	1355.3
99	5	167.9	1355.3
100	5	167.9	1355.3
101	5	167.9	1355.3
102	5	167.9	1355.3
103	5	167.9	1355.3
104	5	167.9	1355.3
105	5	167.9	1355.3
106	5	167.9	1355.3
107	5	167.9	1355.3
108	5	167.9	1355.3
109	5	167.9	1355.3
110	5	167.9	1355.3
111	5	167.9	1355.3
112	5	167.9	1355.3
113	5	167.9	1355.3
114	5	167.9	1355.3
115	5	167.9	1355.3
116	5	167.9	1355.3
117	5	167.9	1355.3
118	5	167.9	1355.3
119	5	167.9	1355.3
120	5	167.9	1355.3
121	5	167.9	1355.3
122	5	167.9	1355.3
123	5	167.9	1355.3
124	5	167.9	1355.3
125	5	167.9	1355.3
126	5	167.9	1355.3
127	5	167.9	1355.3
128	5	167.9	1355.3
129	5	167.9	1355.3
130	5	167.9	1355.3
131	5	167.9	1355.3
132	5	167.9	1355.3
133	5	167.9	1355.3
134	5	167.9	1355.3
135	5	167.9	1355.3
136	5	167.9	1355.3
137	5	167.9	1355.3
138	5	167.9	1355.3
139	5	167.9	1355.3
140	5	167.9	1355.3
141	5	167.9	1355.3
142	5	167.9	1355.3
143	5	167.9	1355.3
144	5	167.9	1355.3
145	5	167.9	1355.3
146	5	167.9	1355.3
147	5	167.9	1355.3

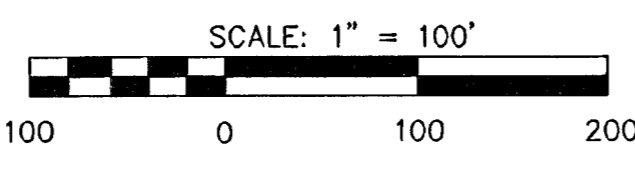
CURVE	LENGTH	RADIUS	DELTA
C44	589.56'	350.00'	Δ=96°31'44"
C45	912.16'	600.00'	Δ=87°06'18"
C46	260.56'	600.00'	Δ=24°52'54"
C52	213.42'	200.00'	Δ=61°08'22"
C53	170.28'	300.00'	Δ=32°31'19"
C54	246.38'	200.00'	Δ=70°34'56"
C55	156.85'	600.00'	Δ=14°58'42"
C56	158.56'	400.00'	Δ=22°42'46"
C57	373.94'	200.00'	Δ=107°07'33"
C58	248.70'	300.00'	Δ=47°29'52"
C59	141.66'	600.00'	Δ=13°31'38"
C60	62.60'	285.00'	Δ=12°35'03"
C61	188.26'	500.00'	Δ=21°34'21"
C62	140.60'	400.00'	Δ=20°08'23"
C63	89.91'	200.00'	Δ=25°45'28"
C64	120.34'	200.00'	Δ=34°28'27"
C65	255.75'	350.00'	Δ=41°52'01"
C66	394.00'	225.00'	Δ=100°19'56"
C67	139.37'	300.00'	Δ=26°37'04"
C68	139.57'	450.00'	Δ=17°49'18"
C69	114.38'	447.00'	Δ=14°39'42"
C70	304.23'	253.00'	Δ=68°53'52"
C71	42.33'	275.00'	Δ=8°49'06"

LINE	LENGTH	BEARING
L53	23.61'	N25°56'24"E
L54	138.63'	S88°09'47"W
L54	135.85'	S35°49'48"E
L65	73.72'	N83°01'50"E
L66	113.90'	S64°26'51"E
L67	105.94'	S06°08'04"W
L68	26.89'	S88°13'08"E
L69	100.87'	S65°30'23"E
L70	134.97'	N08°50'38"W
L71	104.90'	S09°45'06"W
L72	102.90'	S81°43'05"E
L73	70.70'	N10°28'03"E
L74	62.53'	N09°02'05"E
L75	339.88'	N85°41'51"E
L76	26.41'	N04°18'09"W
L77	125.29'	N21°27'20"E
L78	83.90'	N13°01'08"W
L79	42.02'	N52°28'08"W
L80	144.37'	S53°58'18"E
L81	46.16'	S46°24'40"W
L82	114.54'	N16°40'18"W
L83	32.69'	N07°31'12"W

- LEGEND**
- △ = Found Section Corner
 - = Found Survey Monument
 - = Set 3/8" Rebar W/ MKEC CLS 39 id. cap
 - D.E. = Drainage Easement
 - B.S. = Building Setback
 - U.E. = Utility Easement
 - (M) = Measured
 - - - = Floodway Reserve

NOTES

- There shall be no parking on or along Westlakes Parkway.



S. 1/4 Corner, Sec. 32, T26S, R1W, 6th P.M. Fnd. 3/4" Bar w/ 1 1/2" Alum. Cap stamped Sedgwick County

20' GRANT OF RIGHT OF WAY (By Westar Energy Inc.) FILM 1918, PAGES 20 & 21
20' EASEMENT TO USE EXISTING RIGHT OF WAY (By SBC Communications Inc.) FILM 2094, PAGES 335 & 336

30' - ROAD RECORD Book C Page 390 (9-25-1899)

EASEMENT FOR RIGHT-OF-WAY (by Sedgwick County) FILM 1950, PAGE 165

E. 1/4 Corner, Sec. 32, T26S, R1W, 6th P.M. P.O.B. Fnd. 3/4" Pipe

FINAL PLAT

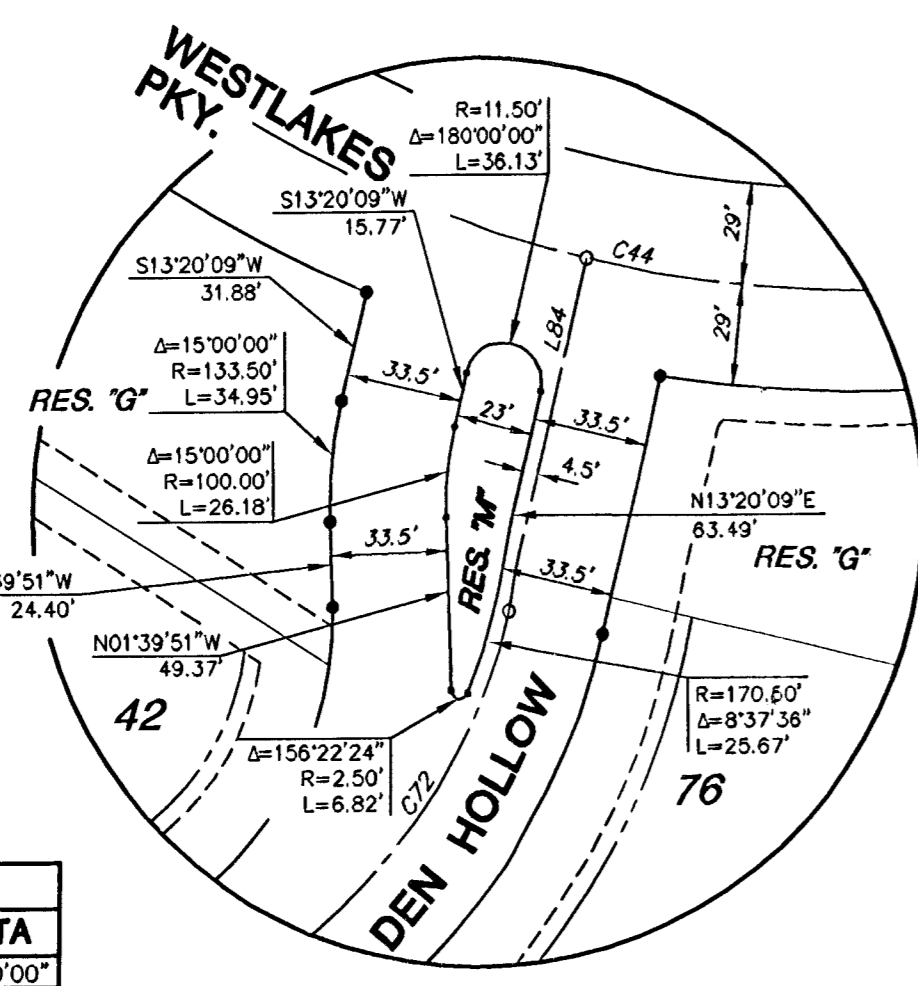
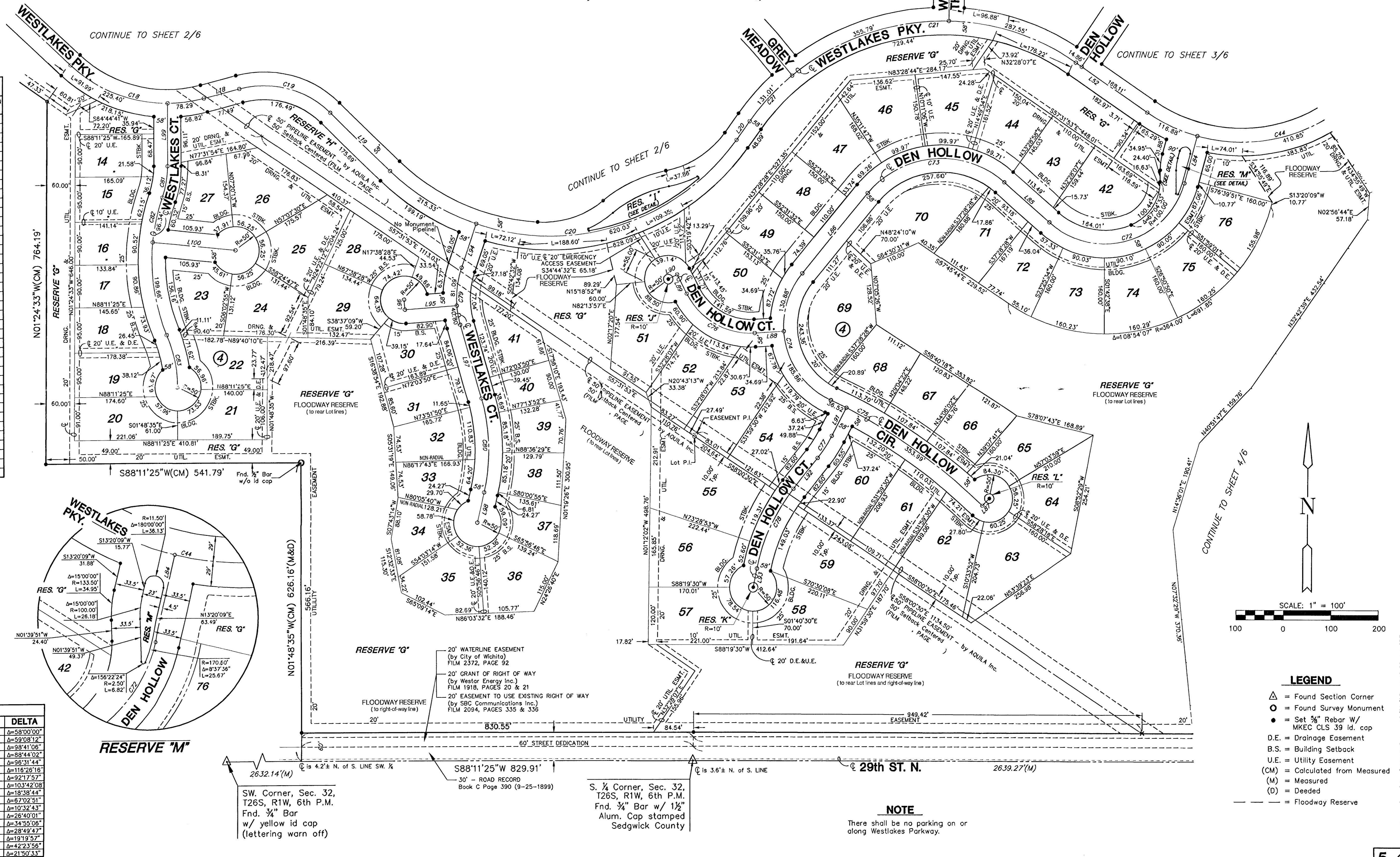
FOX RIDGE ADDITION

AN ADDITION TO WICHITA, SEDGWICK COUNTY, KANSAS

LOT	BLOCK	ELEVATION (CITY DATUM)	ELEVATION (NGVD)
21	4	164.9	1352.3
22	4	164.9	1352.3
24	4	164.9	1352.3
29	4	164.9	1352.3
30	4	164.9	1352.3
31	4	164.9	1352.3
32	4	164.9	1352.3
33	4	164.9	1352.3
34	4	164.9	1352.3
35	4	164.9	1352.3
36	4	164.9	1352.3
37	4	164.9	1352.3
38	4	164.9	1352.3
39	4	164.9	1352.3
40	4	164.9	1352.3
41	4	164.9	1352.3
51	4	164.9	1352.3
52	4	164.9	1352.3
55	4	164.9	1352.3
56	4	164.9	1352.3
57	4	164.9	1352.3
58	4	164.9	1352.3
59	4	164.9	1352.3
61	4	164.9	1352.3
62	4	164.9	1352.3
63	4	164.9	1352.3
64	4	164.9	1352.3
65	4	164.9	1352.3
66	4	164.9	1352.3
67	4	164.9	1352.3
68	4	164.9	1352.3
69	4	164.9	1352.3
70	4	164.9	1352.3
71	4	164.9	1352.3
72	4	164.9	1352.3
73	4	164.9	1352.3
74	4	164.9	1352.3
75	4	164.9	1352.3
76	4	164.9	1352.3

LINE	LENGTH	BEARING
L18	77.49'	N73°17'00"E
L19	175.69'	S47°34'48"E
L20	48.09'	S33°44'08"W
L52	182.97'	S37°31'53"E
L84	103.66'	S13°20'09"W
L85	129.22'	N50°13'35"W
L86	218.13'	S37°28'28"W
L87	21.00'	S42°25'03"W
L88	61.62'	N84°37'23"E
L89	45.00'	S28°19'46"E
L90	21.00'	N61°40'15"E
L91	65.60'	N25°30'57"E
L92	82.50'	N36°03'40"E
L93	39.99'	N09°23'39"E
L94	97.23'	S16°58'56"W
L95	110.04'	S83°45'09"W
L96	21.00'	N06°16'55"W
L97	163.19'	S17°56'10"E
L98	65.00'	S10°53'38"W
L99	132.14'	S01°45'55"E
L100	176.79'	N86°13'56"W

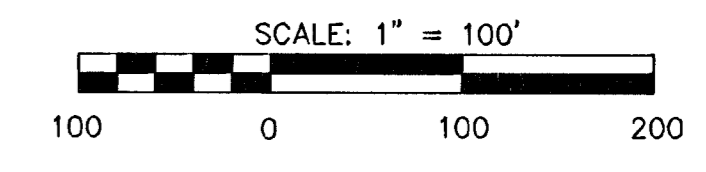
CURVE	LENGTH	RADIUS	DELTA
C18	303.69'	300.00'	Δ=58°00'00"
C19	208.43'	200.00'	Δ=59°08'12"
C20	835.35'	485.00'	Δ=98°41'06"
C21	774.35'	500.00'	Δ=88°44'02"
C44	589.66'	350.00'	Δ=96°31'44"
C72	355.64'	175.00'	Δ=116°26'18"
C73	322.19'	200.00'	Δ=92°17'57"
C74	316.74'	175.00'	Δ=103°42'08"
C75	390.51'	1200.00'	Δ=18°38'44"
C76	175.53'	150.00'	Δ=67°02'51"
C77	55.22'	300.00'	Δ=10°32'43"
C78	186.17'	400.00'	Δ=26°40'01"
C79	121.89'	200.00'	Δ=34°55'08"
C80	201.27'	400.00'	Δ=28°49'47"
C81	67.48'	200.00'	Δ=19°19'57"
C82	296.00'	400.00'	Δ=42°23'56"
C83	114.37'	300.00'	Δ=21°50'33"



SW. Corner, Sec. 32, T26S, R1W, 6th P.M. Fnd. 3/4" Bar w/ yellow id cap (lettering warn off)

S. 1/4 Corner, Sec. 32, T26S, R1W, 6th P.M. Fnd. 3/4" Bar w/ 1 1/2" Alum. Cap stamped Sedgwick County

NOTE
There shall be no parking on or along Westlakes Parkway.



- LEGEND**
- △ = Found Section Corner
 - = Found Survey Monument
 - = Set 3/8" Rebar w/ MKEC CLS 39 id. cap
 - D.E. = Drainage Easement
 - B.S. = Building Setback
 - U.E. = Utility Easement
 - (M) = Calculated from Measured
 - (M) = Measured
 - (D) = Deeded
 - = Floodway Reserve

FINAL PLAT
FOX RIDGE ADDITION
AN ADDITION TO WICHITA, SEDGWICK COUNTY, KANSAS

I, Gregory J. Allison, a Registered Land Surveyor in Kansas, do hereby certify that I have been in responsible charge of surveying and platting of "FOX RIDGE ADDITION", an addition to Wichita, Sedgwick County, Kansas, into Lots, Blocks, Reserves, and Streets, the same being accurately set forth in the accompanying plat and described herein:

All of the Southeast Quarter of Section 32, Township 26 South, Range 1 West, of the 6th Principal Meridian, Wichita, Sedgwick County, Kansas; AND ALSO a tract of land lying in the Southwest Quarter, Section 32, Township 26 South, Range 1 West, of the 6th Principal Meridian, Wichita, Sedgwick County, Kansas; said tracts being more particularly described as follows:

BEGINNING at the Southeast corner of said Southeast Quarter; thence along the South line of said Southeast Quarter on a Kansas South Zone Grid Bearing of S88°19'30"W, 2639.27 feet to the Southwest corner of said Southeast Quarter; thence along the South line of said Southwest Quarter, S88°11'25"W, 829.91 feet to a point on the East line of a tract of land as established on Film 1207, Page 248; thence along said East line of said tract of land N01°48'35"W, 626.16 feet to the Northeast corner of said tract of land; thence along the North line of said tract of land S88°11'25"W, 541.79 feet; thence N01°24'33"W, 764.19 feet; thence N56°43'00"W, 407.71 feet; thence S88°42'04"W, 926.76 feet to the West line of said Southwest Quarter; thence along the West line of said Southwest Quarter, N01°37'05"W, 997.78 feet to the Northwest corner of said Southwest Quarter; thence along the North line of said Southwest Quarter N88°09'47"E, 2651.32 feet to the Center of Section; thence along the North line of said Southwest Quarter N88°09'47"E, 2627.96 feet to the Northeast corner of said Southeast Quarter; thence along the East line of said Southeast Quarter S01°26'51"E, 2639.51 feet to the POINT OF BEGINNING.

The Sanitary Sewer Easement recorded on Film 1625, Page 2109 lying within the above described property is hereby vacated and replatted by virtue of K.S.A. 12-512(b).

I hereby certify that the details of this plat are correct to the best of my knowledge and belief this ____ day of _____, 2003.

Gregory J. Allison, PE, LS #1257
 MKEC Engineering Consultants, Inc.
 411 North Webb Road
 Wichita, Kansas 67206

Know all men by these presents that we the undersigned property owners of the land above set forth in the Registered Land Surveyor's Certificate, have caused the same to be surveyed and platted into Lots, Blocks, Reserves and Streets the same to be known as "FOX RIDGE ADDITION", an addition to Wichita, Sedgwick County, Kansas.

Easements for the construction and maintenance of public utilities, and drainage, as indicated on the accompanying plat are hereby granted to the public. The streets are hereby dedicated to and for the use of the public.

All Reserves are platted for open space, irrigation, landscaping, and monuments; Reserves "A", "B", "C", "D", "E", "F", "G", "H", "I", "M", "N", "O", "P", "Q", "S", and "T" are platted for berming; Reserves "B", "C", and "R" are platted for lakes; Reserves "B" and "G" are platted for floodways in designated areas; Reserves "B", "C", "D", "E", "G", "N", "P", "R", and "S" are platted for drainage; Reserve "B", "C", "G", "F" and "P" are platted for utilities in designated areas; Reserve "B" is platted for a pool/clubhouse; Reserves "B" is platted for "lot-lots"; Reserves "B", "C", and "R" are platted for recreational open space; Reserves "B", "C", "D", "E", "G", "H", "N", "P", and "S" are platted for sidewalks and or bicycle paths; said Reserves shall be owned and maintained by the homeowners association.

All abutters right of access to or from 29th Street North over and across the South line of "FOX RIDGE ADDITION" is hereby granted to the appropriate governing body. All abutters right of access to or from Maize Road over and across the West line of "FOX RIDGE ADDITION" is hereby granted to the appropriate governing body. All abutters right of access to or from Tyler Road over and across the East line of "FOX RIDGE ADDITION" is hereby granted to the appropriate governing body. There shall be no parking on or along Westlakes Parkway.

Minimum Pad Elevations (Lowest Opening) are as indicated on the accompanying plat.

A drainage plan has been developed for this plot and all drainage easements, right-of-way, or reserves shall remain at established grades or as modified with the approval of the applicable City or County Engineer, and unobstructed to allow for the conveyance of storm water.

The floodway reserve shall be the responsibility of the owner until such time as the appropriate governing body exercising jurisdiction elects to assume the responsibility for the maintenance and improvement of the drainage, provided further, that no structure shall be constructed on or within said floodway, nor shall any fill, change of grade, creation of a channel or any other work on be carried out without the permission of the appropriate engineer.

FOX RIDGE DEVELOPMENT CO., Inc.

_____, Manager
 Marv, Schellenberg, Manager

STATE OF KANSAS)
) ss.
 SEDGWICK COUNTY)

BE IT REMEMBERED, that on this _____ day of _____, 2003, before me the undersigned, a Notary Public in and for the County and State aforesaid, came Marv Schellenberg, President, Fox Ridge Development Co., Inc., Manager, to me personally known to be the same person who executed the foregoing instrument of writing and duly acknowledged the execution of the same.

IN WITNESS WHEREOF, I have hereunto set my hand and affixed my official seal, the day and year last above written.

_____, Notary Public

My appointment expires: _____

LEO M. RINK, REVOCABLE TRUST
 VIVIAN L. RINK, REVOCABLE TRUST

_____, Trustee
 Leo M. Rink, Trustee
 Husband

_____, Trustee
 Vivian L. Rink, Trustee
 Wife

STATE OF KANSAS)
) ss.
 SEDGWICK COUNTY)

BE IT REMEMBERED, that on this _____ day of _____, 2003, before me the undersigned, a Notary Public in and for the County and State aforesaid, came Leo M. Rink and Vivian L. Rink, Husband and Wife, Trustees to Leo M. Rink, Revocable Trust and Vivian L. Rink, Revocable Trust, to me personally known to be the same person who executed the foregoing instrument of writing and duly acknowledged the execution of the same.

IN WITNESS WHEREOF, I have hereunto set my hand and affixed my official seal, the day and year last above written.

_____, Notary Public

My appointment expires: _____

We, Emprise Bank, holders of a mortgage on the above described property, do hereby consent to the plat of "FOX RIDGE ADDITION".

EMPRISE BANK

STATE OF KANSAS)
) ss.
 SEDGWICK COUNTY)

BE IT REMEMBERED, that on this _____ day of _____, 2002, before me the undersigned, a Notary Public in and for the County and State aforesaid, came _____, to me personally known to be the same person who executed the foregoing instrument of writing and duly acknowledged the execution of the same.

IN WITNESS WHEREOF, I have hereunto set my hand and affixed my official seal, the day and year last above written.

_____, Notary Public

My appointment expires: _____

This plat of "FOX RIDGE ADDITION", has been submitted to and approved by the Wichita-Sedgwick County Metropolitan Area Planning Commission, Wichita, Kansas.
 Dated this ____ day of _____, 2003.

WICHITA-SEDGWICK COUNTY METROPOLITAN AREA PLANNING COMMISSION

_____, Chair
 Bernard A. Hentzen, Chair

_____, Secretary
 Dale Miller, Secretary

This plat approved and all dedications shown thereon, if any, accepted by the City Council of the City of Wichita, Kansas, this ____ day of _____, 2003.

At the direction of the City Council.

_____, Mayor
 Carlos Mayans, Mayor

_____, City Clerk
 Pat Graves, City Clerk

Entered on transfer record this ____ day of _____, 2003.

_____, County Clerk
 Don Brace, County Clerk

STATE OF KANSAS)
) ss.
 SEDGWICK COUNTY)

This is to certify that this instrument was filed for record in the Register of Deeds office this ____ day of _____, 2003 at ____ o'clock M; and duly recorded.

_____, Register of Deeds
 Bill Meek, Register of Deeds

_____, Deputy
 Linda Kizzire, Deputy

Reviewed in accordance with K.S.A. 58-2005 on this ____ day of _____, 2003.

_____, Deputy County Surveyor

Tricia L. Robello, LS #1246
 Deputy County Surveyor
 Sedgwick County, Kansas