

PRELIMINARY PLAT OF  
FRIENDS UNIVERSITY 3RD ADDITION

Wichita, Sedgewick County, Kansas.

LEGAL DESCRIPTION:

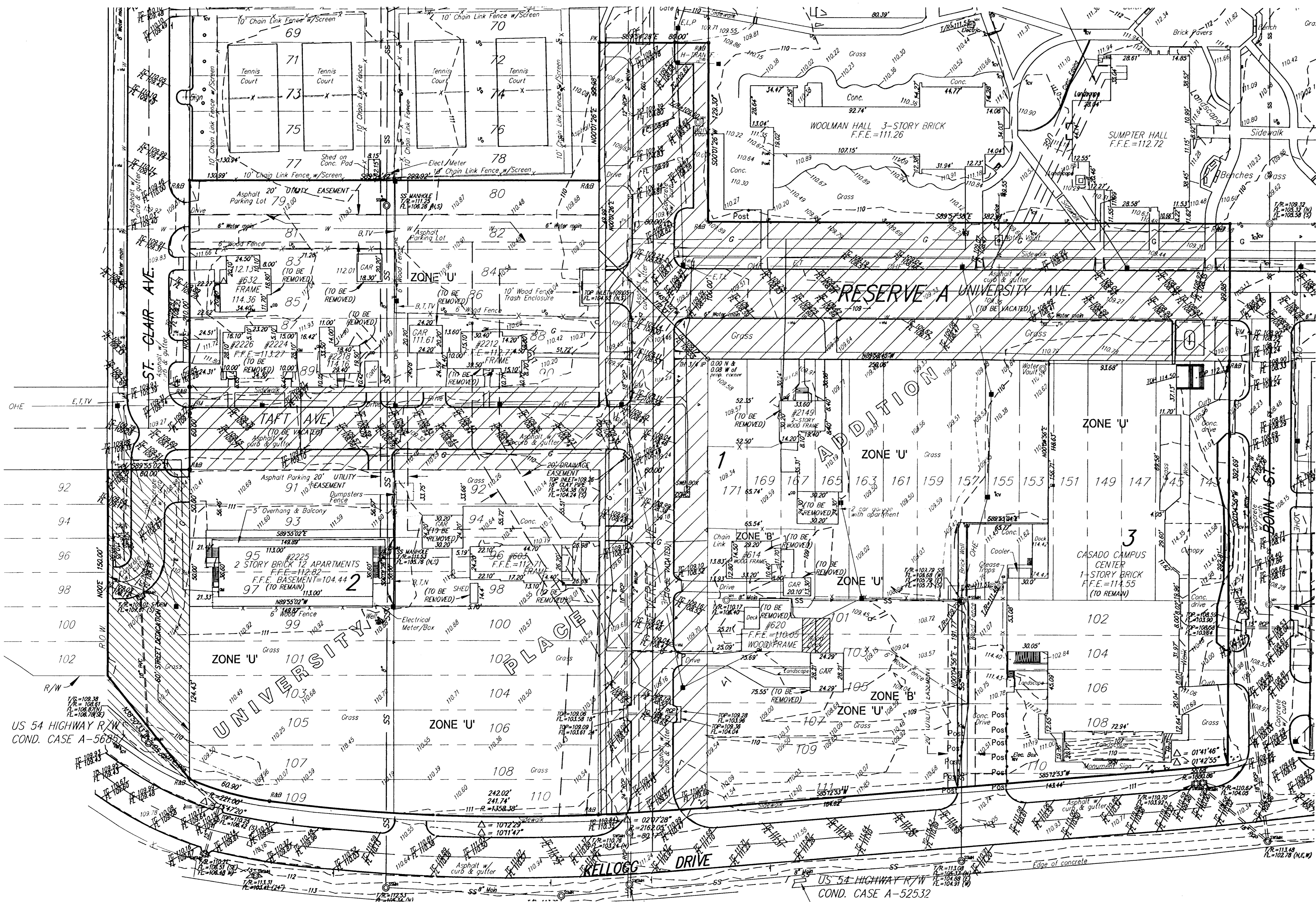
BEING A REPLAT of odd-numbered Lots 79 through 109 on St. Clair Avenue, even-numbered Lots 80 through 112 on Everett Avenue, odd-numbered Lots 101 through 111 on Everett Avenue, odd-numbered Lots 143 through 171 on Shirley (now University) Avenue, and even-numbered Lots 102 through 112 on Bonn Street; TOGETHER WITH all of vacated St. Clair Avenue right-of-way lying south of Burgess (now Taft) Avenue, all of Shirley (now University) Avenue right-of-way lying west of the west line of Bonn Avenue, all of Burgess (now Taft) Avenue right-of-way lying east of the east line of St. Clair Avenue, and all of Everett Avenue right-of-way; all as platted in University Place Addition to Wichita, Sedgewick County, Kansas; EXCEPT those parts lying south of the north line of highway right-of-way Condemned in Cases A-52532 and A56857.

OWNER:  
Friends University  
2100 W. University  
Wichita, Kansas 67213

Ph. (316) 295-5000

SUBDIVIDER & ENGINEER:  
Ruggles & Bohm P.A.

FLOOD ZONE:  
According to the FEMA/FIRM Community Panel No. 200328 0025 B, effective May 15, 1986; the property shown hereon is located in Zone B, an area between the limits of 100-year flood and 500-year flood.

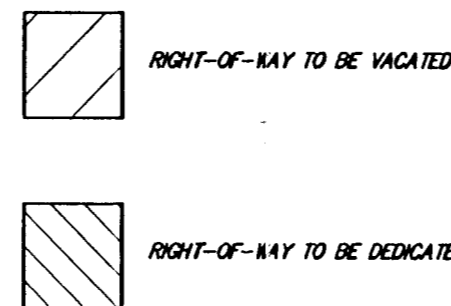


TOPOGRAPHIC LEGEND

- G. . . . . Gas Line (Kansas Gas Service)
- W. . . . . Water Line (City of Wichita)
- T. . . . . Telephone (Southwestern Bell)
- SS. . . . . Sanitary Sewer (City of Wichita)
- CTV. . . . . Cable TV (Cox Communications)
- SWS. . . . . Storm Water Sewer (City of Wichita)
- OHE. . . . . Overhead Electric (Westar)
- UGE. . . . . Underground Electric (Westar)
- B.M. . . . . Benchmark
- E.M. . . . . Electric Meter (Westar)
- CATV. . . . . Cable TV Box (Cox Communications)
- G.R. . . . . Gas Regulator (Kansas Gas Service)
- XFM. . . . . Transformer
- A.C. . . . . Air Conditioner
- W.M. . . . . Water Meter (City of Wichita)
- W.V. . . . . Water Valve (City of Wichita)
- C.O. . . . . Clean Out
- T.P. . . . . Telephone Pole
- P. . . . . Power Pole (Westar)
- G.A. . . . . Guy Anchor
- G.P. . . . . Guy Pole
- KGE M.H. . . . . KGE Manhole (Westar)
- SWS M.H. . . . . Storm Water Sewer Manhole (City of Wichita)
- SS M.H. . . . . Sanitary Sewer Manhole (City of Wichita)
- L.P. . . . . Light Pole
- 100.00. . . . . Location of spot elevation

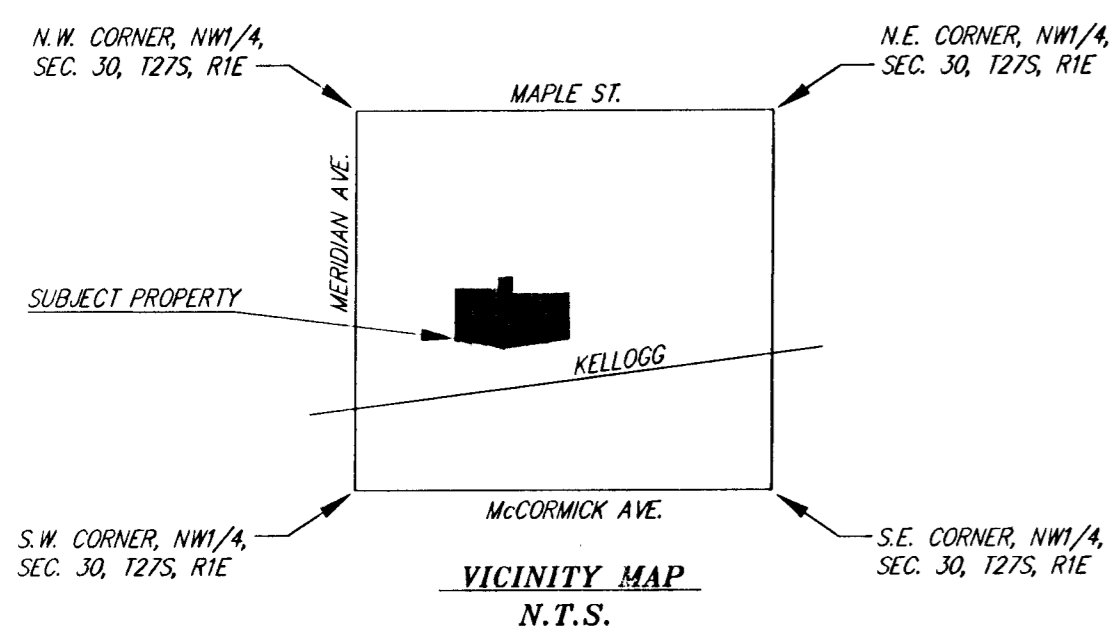
BENCHMARKS:

- T.C. N. return N.W. corner Taft & Everett  
Elev = 109.14 (City of Wichita datum)
- T.C. E. return N.E. corner Taft & St. Clair  
Elev = 109.81 (City of Wichita datum)
- T.C. S. return S.W. corner intersection Bonn & University  
Elev = 108.93 (City of Wichita datum)

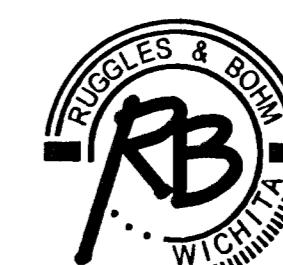


LOT AREAS

LOT	SQ. FEET
LOT 1	225063
LOT 2	7494
LOT 3	52073



DWG FILE: 2299P-W.C.  
PROJECT NO. 02K02299P  
NOVEMBER 25, 2002



**Ruggles & Bohm, P.A.**  
Engineering, Surveying, Land Planning  
924 North Main (316) 264-8008  
Wichita, Kansas 67203 (316) 264-4621 fax  
www.rbkansas.com E-mail: info@rbkansas.com