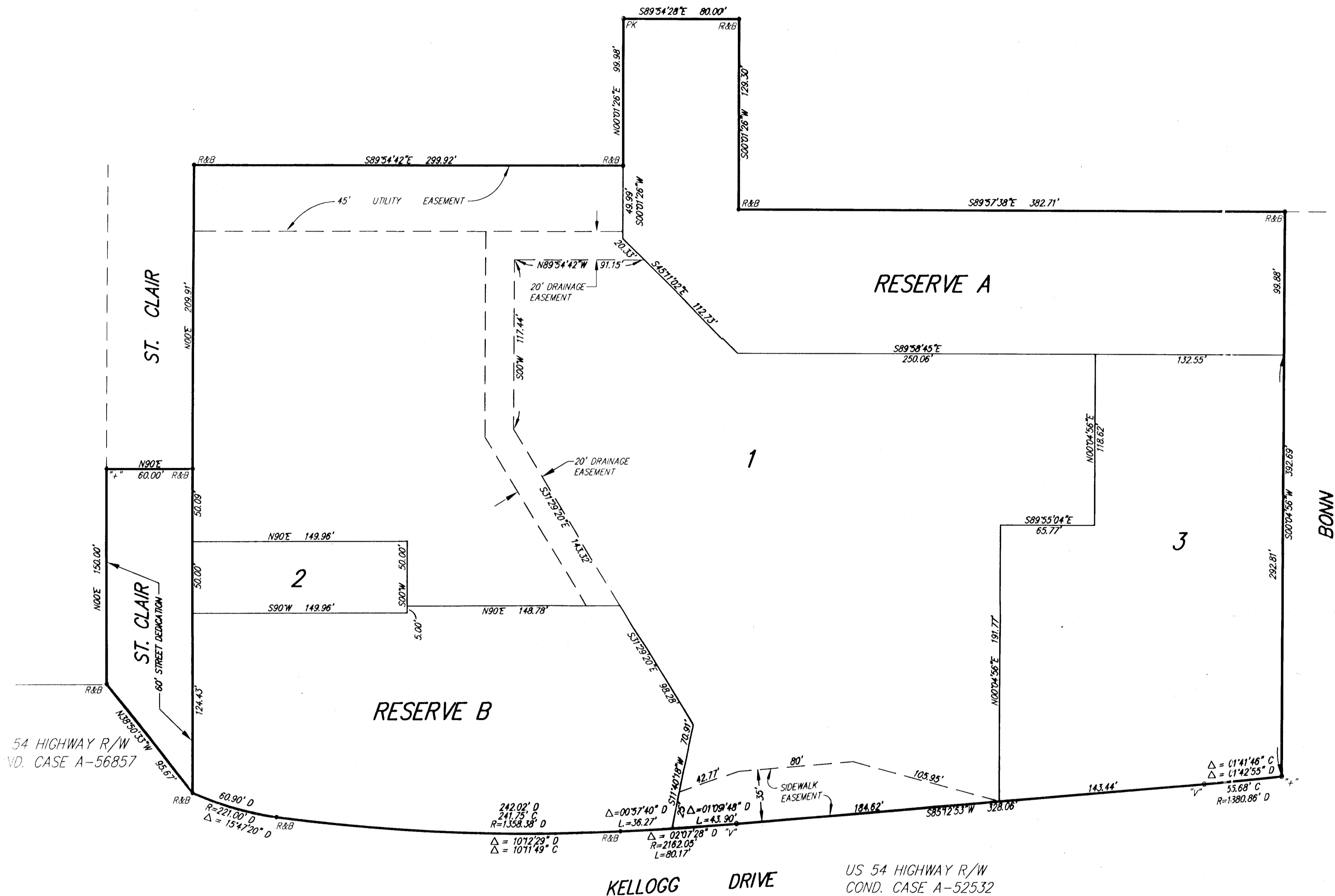


# FRIENDS UNIVERSITY 3RD ADDITION

## Wichita, Sedgwick County, Kansas

*Final*  
4/27/03



State of Kansas)  
Sedgwick County) SS

We, Ruggles & Bohm, P.A., Land Surveyors in aforesaid county and state, do hereby certify that, under the supervision of the undersigned, we have surveyed and platted "FRIENDS UNIVERSITY 3RD ADDITION", Sedgwick County, Kansas, and that the accompanying plat is a true and correct exhibit of the property surveyed, described as and being a replat of odd-numbered Lots 79 through 109 on St. Clair Avenue, even-numbered Lots 80 through 112 on Everett Avenue, odd-numbered Lots 101 through 111 on Everett Avenue, odd-numbered Lots 143 through 171 on Shirley (now University) Avenue, and even-numbered Lots 102 through 112 on Bonn Street; TOGETHER WITH all of vacated St. Clair Avenue right-of-way lying south of Burgess (now Taft) Avenue, all of Shirley (now University) Avenue right-of-way lying west of the west line of Bonn Avenue, all of Burgess (now Taft) Avenue right-of-way lying east of the east line of St. Clair Avenue, and all of Everett Avenue right-of-way; all as platted in University Place Addition to Wichita, Sedgwick County, Kansas; EXCEPT those parts lying south of the north line of highway right-of-way condemned in Cases A-52532 and A56857.

All public easements and dedications being vacated by virtue of K.S.A. 12-512(b).

Ruggles & Bohm, P.A.

*Thomas C. Ruggles*  
Thomas C. Ruggles  
Land Surveyor

This plat of "FRIENDS UNIVERSITY 3RD ADDITION", Wichita, Sedgwick County, Kansas, has been submitted to and approved by the Wichita-Sedgwick County Metropolitan Area Planning Commission, Wichita, Kansas. Dated this \_\_\_\_ day of \_\_\_\_\_, 2003.

Wichita-Sedgwick County Metropolitan Area Planning Commission

\_\_\_\_\_  
Chairman  
Bernard A. Hentzen

\_\_\_\_\_  
Secretary  
Dale Miller

This plat approved and all dedications shown hereon accepted by the City Council of the City of Wichita, Kansas, this \_\_\_\_ day of \_\_\_\_\_, 2003.

At the direction of the City Council

\_\_\_\_\_  
City Clerk  
Pat Graves

Reviewed in accordance with K.S.A. 58-2005 on this \_\_\_\_ day of \_\_\_\_\_, 2003.

\_\_\_\_\_  
Deputy County Surveyor  
Tricia L. Robello, LS #1246  
Sedgwick County Kansas

Entered on transfer record this \_\_\_\_ day of \_\_\_\_\_, 2003.

\_\_\_\_\_  
County Clerk  
Don Brace

State of Kansas)  
Sedgwick County) SS

This is to certify that this plat has been filed for record in the office of the Register of Deeds, this \_\_\_\_ day of \_\_\_\_\_, 2003, at \_\_\_\_ o'clock \_\_\_\_ M, and is duly recorded.

\_\_\_\_\_  
Register of Deeds  
Bill Meek

\_\_\_\_\_  
Deputy  
Linda Kizzire

Know all men by these presents that we, the undersigned, have caused the land described in the surveyor's certificate to be platted into Lots, a Street and Reserves, to be known as "FRIENDS UNIVERSITY 3RD ADDITION", Wichita, Sedgwick County, Kansas. The Street is hereby dedicated to and for the use of the public. The sidewalk easement is hereby granted for construction and maintenance of public sidewalks. The utility easements are hereby granted as indicated for the construction and maintenance of all public utilities. The drainage easement is hereby granted as indicated for the construction and maintenance of a storm sewer system. A drainage plan for the plat is on file in the office of the City Engineer. All drainage easements and reserves shall remain at established grades, or as modified with the approval of the City Engineer, and unobstructed to allow for the conveyance of storm water. Reserve A is to be owned and maintained by the owners of adjacent lots, and is to be used for open space, pedestrian ways, lighting, emergency access, drainage, and for public utilities. Reserve B is to be owned and maintained by the owners of Lot 1, and is to be used for open space, drainage, gazebo, fountains, lighting, public sidewalk, and private sanitary sewer.

Friends University, a Kansas non-profit Corporation

*Kelley Dawson*  
Kelley Dawson, Associate V.P.

State of Kansas)  
Sedgwick County) SS

The foregoing instrument acknowledged before me, this 17th day of April, 2003, by Kelley Dawson, Associate V.P., on behalf of the Corporation.

*Melissa J. Weaver*  
Notary Public

My appointment expires 3-4-2004



We, the undersigned, holders of a mortgage on the above described property, do hereby consent to this plat of "FRIENDS UNIVERSITY 3RD ADDITION", Wichita, Sedgwick County, Kansas, this 21st day of April, 2003.

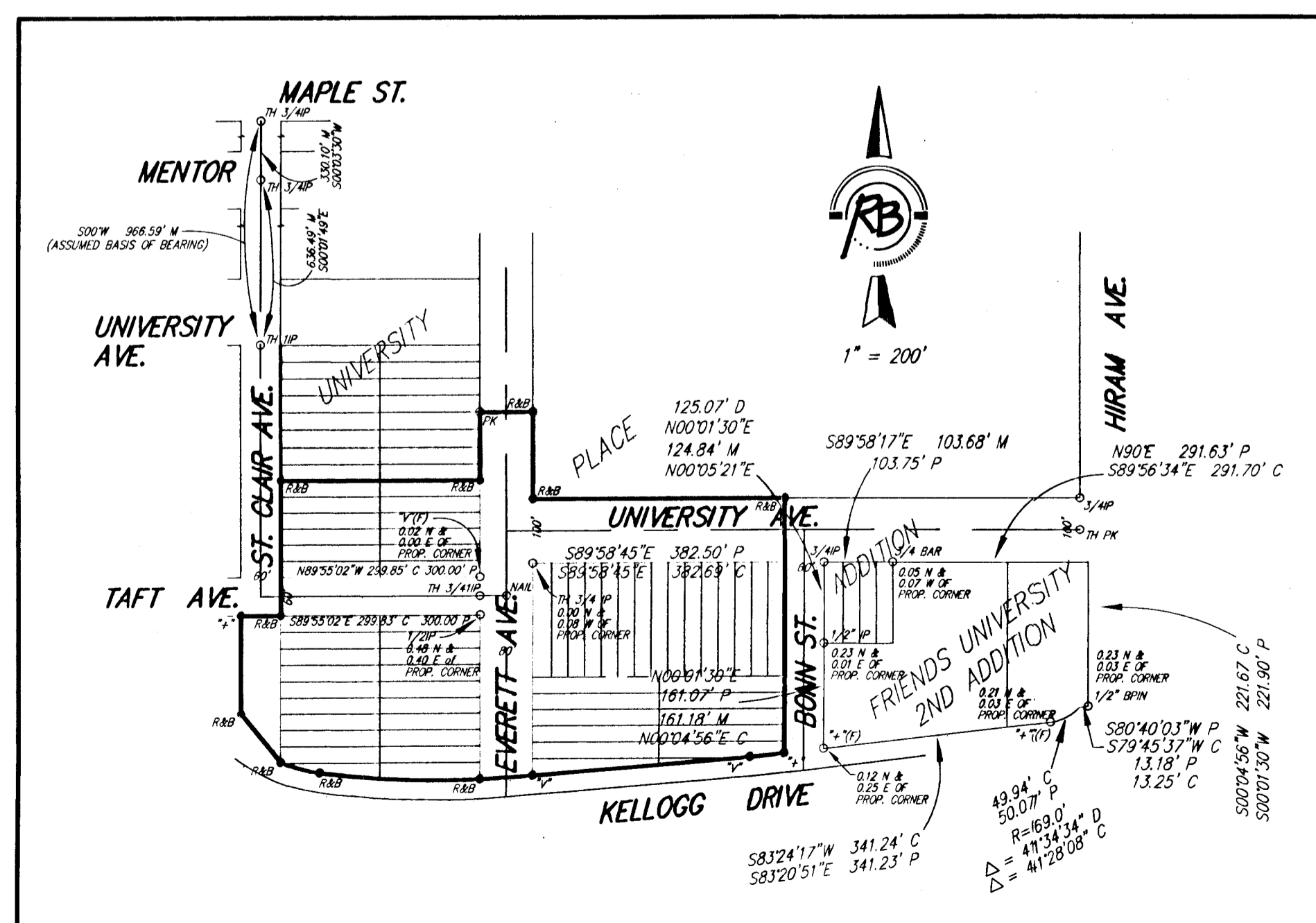
Bank of America  
Trust Bank

*Bonnie Mosher*  
Bonnie Mosher, Vice President

We, the undersigned, holders of a mortgage on the above described property, do hereby consent to this plat of "FRIENDS UNIVERSITY 3RD ADDITION", Wichita, Sedgwick County, Kansas, this 21st day of April, 2003.

Commerce Bank, N.A.

*Shawn Hoebener*  
Shawn Hoebener, Assr. V.P.



**SURVEY MARKER LEGEND**

- P = PLATTED
- M = MEASURED
- D = DESCRIBED
- C = CALCULATED
- 1/2" IP = 1/2" IRON PIPE (FOUND)
- 3/4" IP = 3/4" IRON PIPE (FOUND)
- 3/4" BAR = 3/4" BAR (FOUND)
- 1/2" R/B = 1/2" REBAR W/BAUGHMAN CAP
- NAIL = CONCRETE NAIL (FOUND)
- "Y" = CHISELED "Y" (FOUND)
- TH 3/4" IP = 3/4" IRON PIPE IN THIMBLE (FOUND)
- TH 1" IP = 1" IRON PIPE IN THIMBLE (FOUND)
- TH PK = PK NAIL IN THIMBLE (FOUND)
- "\*Y" = CHISELED "\*" (FOUND)
- R/B = 1/2" REBAR W/R/B CAP (SET)
- "\*Y" = CHISELED "\*" (SET)
- "Y" = CHISELED "Y" (SET)
- PK = PK NAIL (SET)

