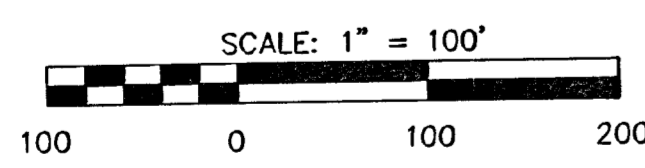
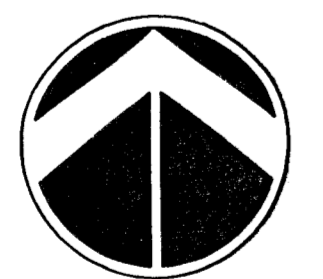
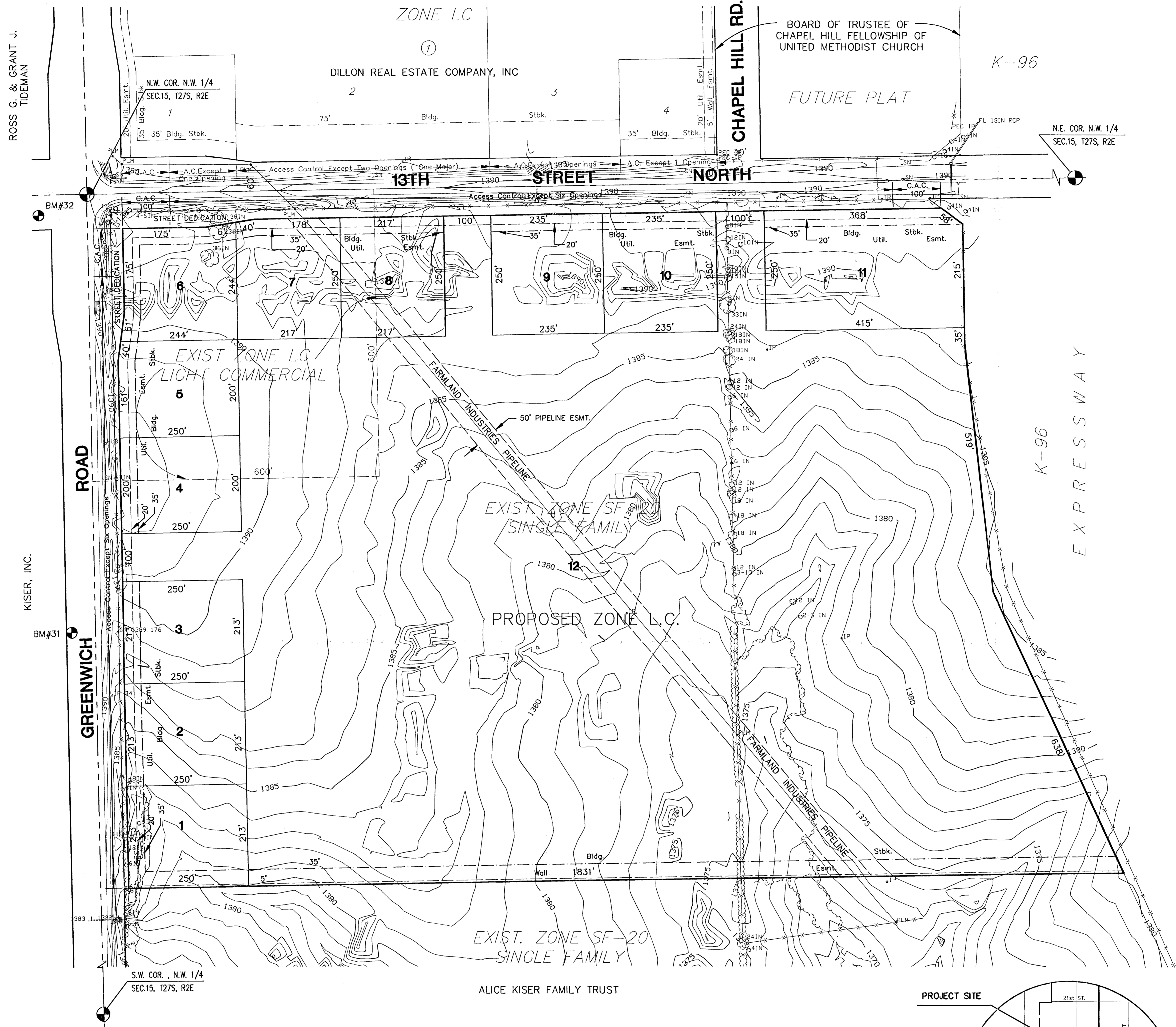


DILLONS 12TH ADDITION

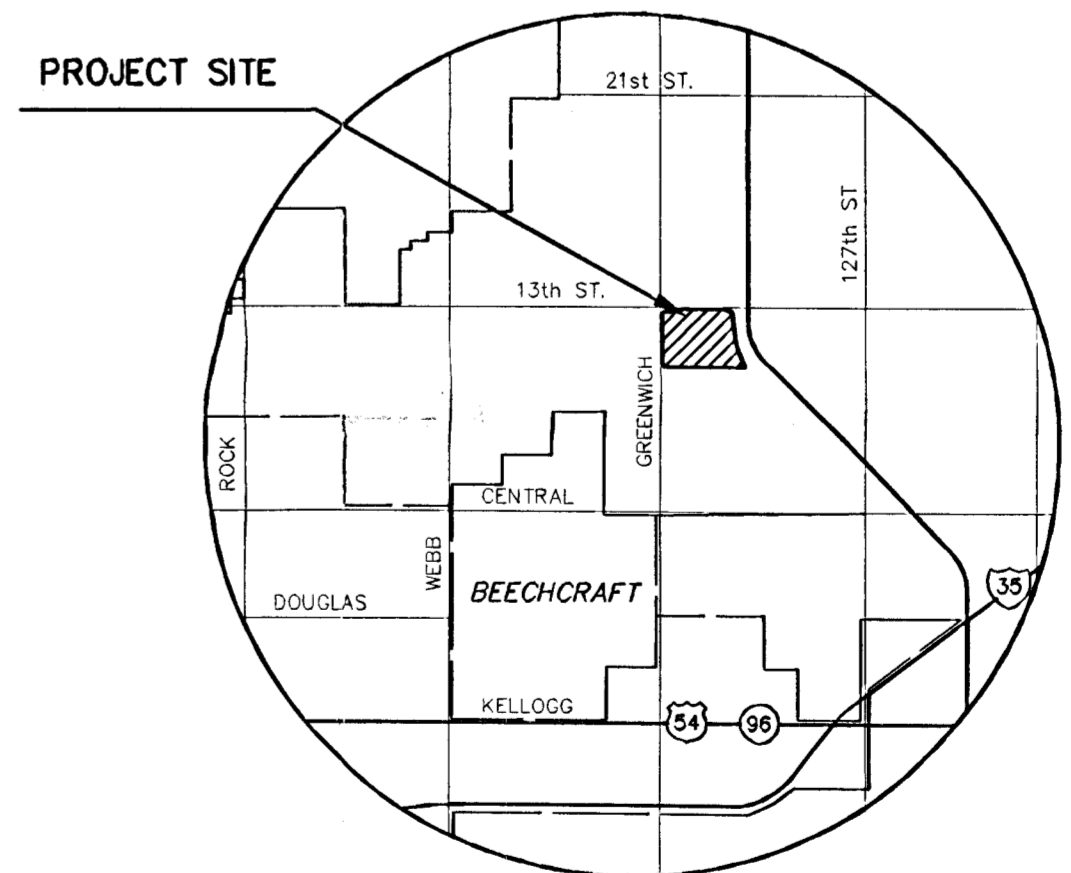


BENCHMARKS

- BM#31 FENCE "I" POST 826' N. & 49' E. OF EAST 1/4 COR. SEC. 16, T27S, R2E
ELEV. = 1389.18
- BM#32 COW BENCHMARK, 44' S. & 101' W. OF NE COR. SEC.16, T27S, R2E (13TH ST. N. & GREENWICH RD.)
ELEV. = 1385.53 (PUBLISHED 198.13)

LEGEND

- PLM PIPELINE MARKER
- PP POWER POLE
- BTN TREE
- TR TRANSFORMER
- IP IRON PIN
- FENCE



VICINITY MAP

PRELIMINARY PLAT
THE GATEWAY CENTER ADDITION

OWNERS: WILLARD J. KISER PROPERTIES, L.L.C.
AND KISER GATEWAY, L.L.C. 7765 KILLARNEY PLACE, WICHITA, KS. 67226 (316) 634-0363

DEVELOPERS: GATEWAY PARTNERS L.L.C. c/o RITCHIE ASSOC., INC. 8100 E. 22ND WICHITA, KANSAS 67226 (316) 684-7300
AND LAHAM DEVELOPMENT 150 N. MARKET WICHITA, KANSAS 67202 (316) 262-6412

