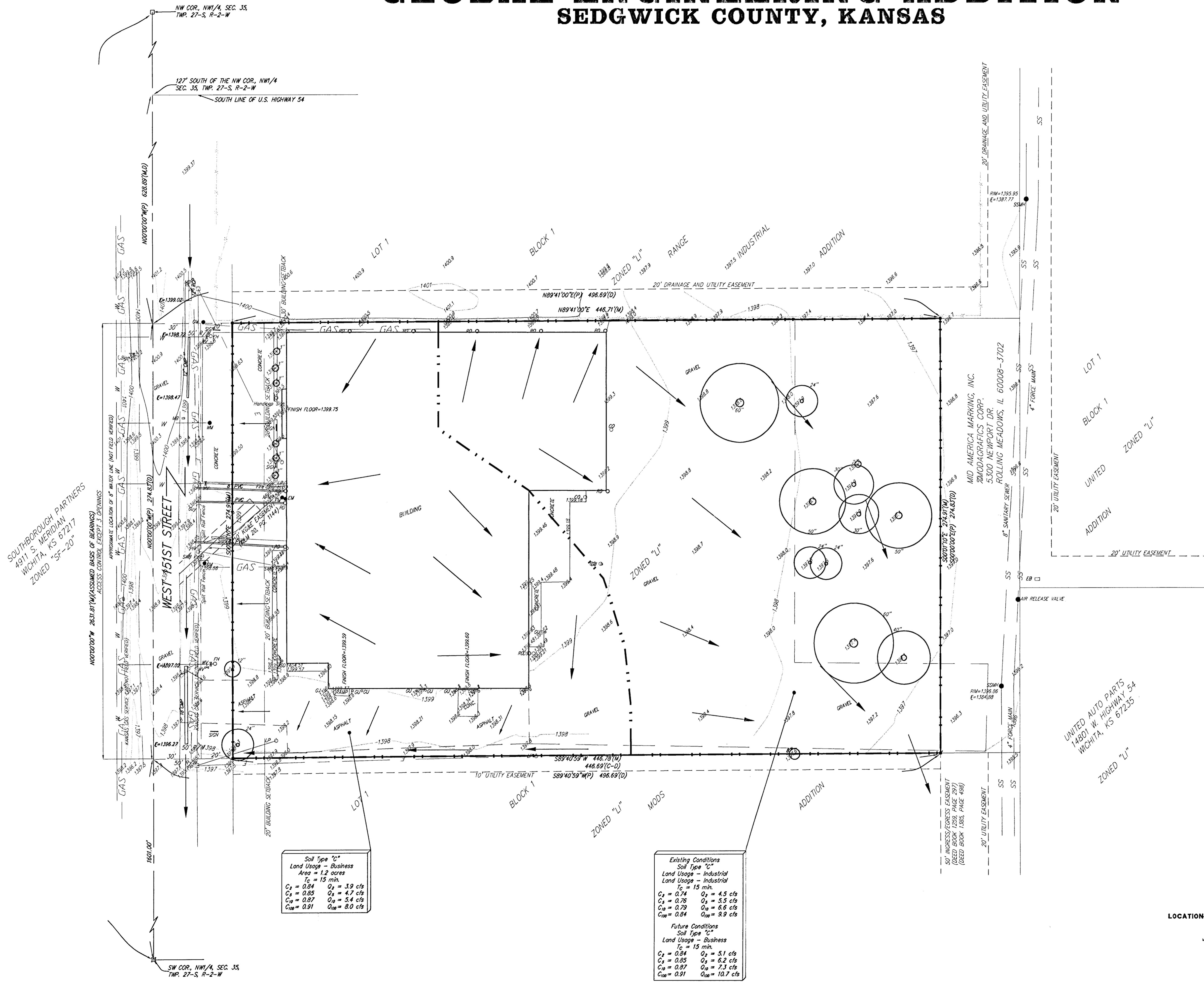


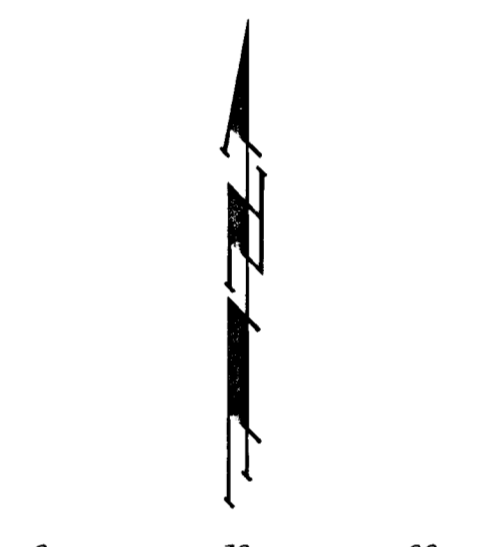
# GLOBAL ENGINEERING ADDITION SEDGWICK COUNTY, KANSAS



**OWNER:**  
Global Engineering & Technology, Inc.  
1720 S. 151st W.  
Goddard, KS 67052

**LEGAL DESCRIPTION:**  
A tract of land in NW 1/4 of Sec. 35, Twp. 27-S, R-2-W of the 6th P.M., Sedgwick County, Kansas, described as follows: Beginning at a point on the west line of the NW 1/4 of Sec. 35 which is 628.89 feet south of the south right-of-way line of U.S. Highway 54; thence east parallel with the south line of said Highway right-of-way, 496.69 feet; thence south parallel west line of said NW 1/4, 274.83 feet; thence west parallel with the south line of said U.S. Highway 54, 496.69 feet to the west line of the NW 1/4 of said Sec. 35; thence north on said west line, 274.83 feet to the point of beginning.

**BENCHMARK:**  
"□" 40' north and 35' east of NE corner of Mods Addition, west side of concrete sanitary sewer manhole. Elev. = 1396.92 NGVD



DATE OF PREPARATION: MARCH 26, 2001  
DATE OF TOPOGRAPHY: MARCH 16, 2001  
CONTOUR INTERVAL = 1 FOOT

- CO = Cleanout
- EB = Electric Box
- TH = Fire Hydrant
- GM = Gas Meter
- GP = Guard Post (Ballard)
- GA = Guy Anchor
- LP = Light Pole
- MB = Mail Box
- EM = Electric Meter
- RD = Roof Drain
- PP = Power Pole
- SD = Satellite Dish
- SP = Sign
- SM = Sanitary Sewer Manhole
- SWB = Southwestern Bell Pedestal
- W = Water Meter
- WV = Water Valve
- WT = Transformer

- #4 REBAR W/ "BAUGHMAN" CAP (FOUND)
- #4 REBAR W/ "BAUGHMAN" CAP (SET)
- SECTION CORNER (FOUND)
- #4 REBAR (FOUND)
- (M) = MEASURED
- (D) = DESCRIBED
- (P) = PLATTED
- (C-D) = CALCULATED PER DESCRIPTION

**Soil Type "C"**  
Land Usage - Business  
Area = 1.2 acres  
T<sub>c</sub> = 15 min.

C <sub>2</sub> = 0.84	Q <sub>2</sub> = 3.9 cfs
C <sub>3</sub> = 0.85	Q <sub>3</sub> = 4.7 cfs
C <sub>10</sub> = 0.87	Q <sub>10</sub> = 5.4 cfs
C <sub>100</sub> = 0.91	Q <sub>100</sub> = 8.0 cfs

**Existing Conditions**  
Soil Type "C"  
Land Usage - Industrial  
Area = 1.2 acres  
T<sub>c</sub> = 15 min.

C <sub>2</sub> = 0.74	Q <sub>2</sub> = 4.5 cfs
C <sub>3</sub> = 0.76	Q <sub>3</sub> = 5.3 cfs
C <sub>10</sub> = 0.79	Q <sub>10</sub> = 6.5 cfs
C <sub>100</sub> = 0.84	Q <sub>100</sub> = 9.9 cfs

**Future Conditions**  
Soil Type "C"  
Land Usage - Business  
Area = 1.2 acres  
T<sub>c</sub> = 15 min.

C <sub>2</sub> = 0.84	Q <sub>2</sub> = 5.1 cfs
C <sub>3</sub> = 0.85	Q <sub>3</sub> = 6.2 cfs
C <sub>10</sub> = 0.87	Q <sub>10</sub> = 7.3 cfs
C <sub>100</sub> = 0.91	Q <sub>100</sub> = 10.7 cfs

