

MYSTIC LAKES

AN ADDITION TO SEDGWICK COUNTY, KANSAS

B.M. Chiseled "d" at South End 18" RCP at Driveway Entrance of Center of Mystic Lake Plat on East Right-of-way of Tyler.
Elev. = 1347.72 (N.G.V.D.)

West 1/4 Corner,
Section 16,
T26S, R1W
Fd. Stone

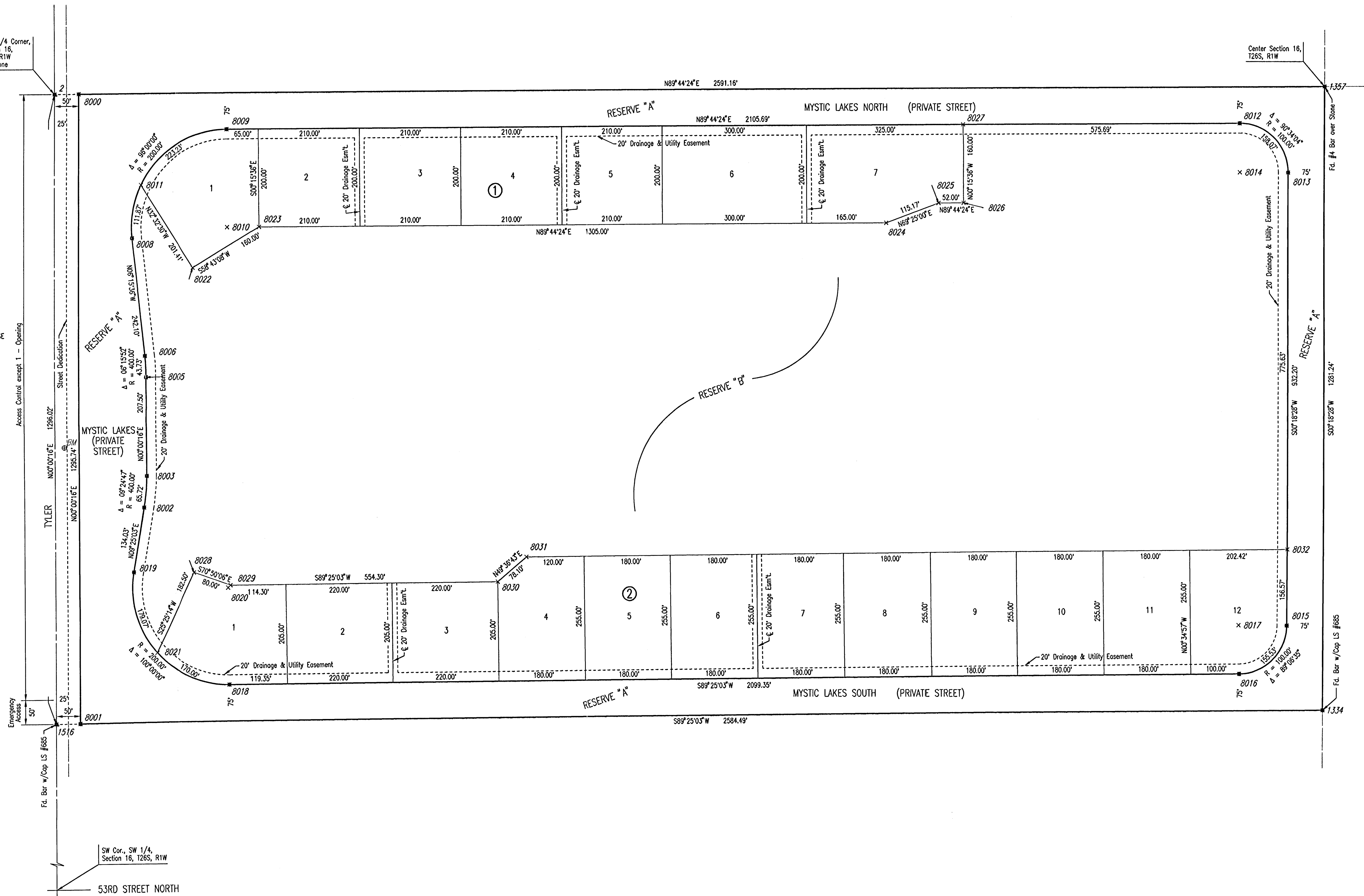
Center Section 16,
T26S, R1W

SCALE : 1" = 100'

● = 3/4" IRON PIPE WITH PEC CAP UNLESS NOTED OTHERWISE

× 8007
MINIMUM FLOOR ELEVATION AND
LOWEST OPENING = 1344.0 N.G.V.D.

× 8004



SW Cor., SW 1/4,
Section 16, T26S, R1W

53RD STREET NORTH