

SKETCH PLAT MIKKI ADDITION

WICHITA, SEDGWICK COUNTY, KANSAS

Legal Description:

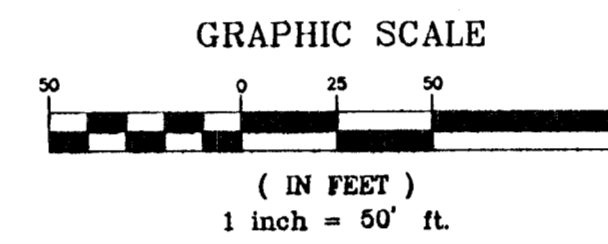
Beginning 507.7 feet North of the S.W. corner of the SE1/4 of Section 20, Twp. 26-s, R-1-E of the 6th P.M., Sedgwick County, Kansas; thence North along the West line of said SE1/4, 670.15 feet; thence East, 650 feet; thence South, 670.15 feet; thence west, 650 feet to the place of beginning.

Jo Michelle McKay
4700 N. Arkansas
Wichita KS, 67204
832-9118

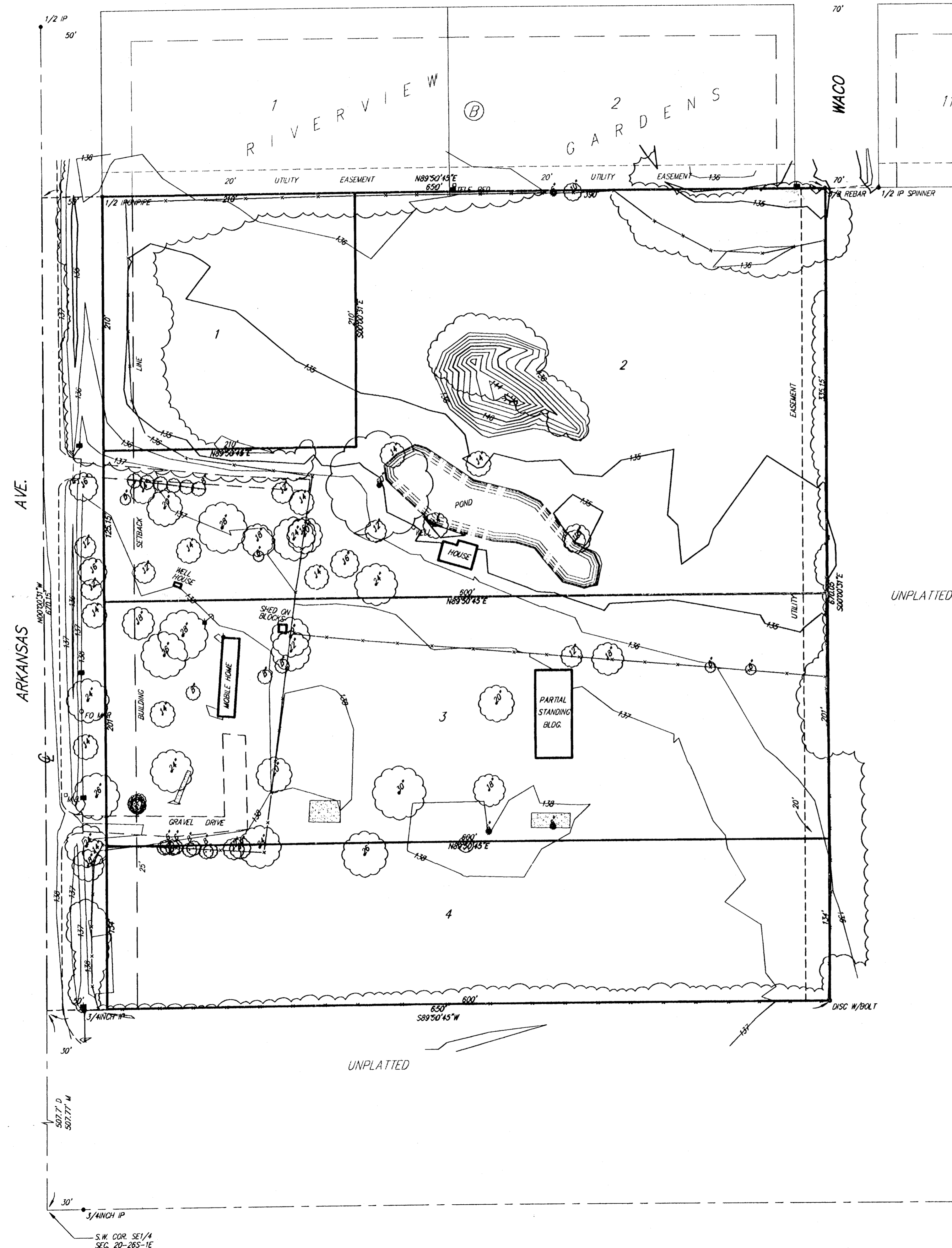
Gross Size:
433,596 Sq. Ft. ±
10.0 Acres ±

Net Size:
402,088 Sq. Ft. ±
9.2 Acres ±

Minimum Lot Size:
44,099.9 Sq. Ft. ±
1.01 Acres ±



BENCH MARK: CITY OF WICHITA BENCH MARK
S.W. COR. OF INTERSECTION OF ARKANSAS & 46TH ST. N.
31.7' N. & 38.5' W. OF CENTERLINE OF BOTH.
STAMPED D.L.R. 8-94
ELEV. = 136.9 (CITY DATUM)



UNPLATTED

UNPLATTED

DWG FILE: 01130P-R.C.
PROJECT NO. 98101130P

SRB 924 NORTH MAIN 316-264-8008
WICHITA, KANSAS 67203 FAX 264-4621
http://www.feist.com/~srb E-mail: srbo@feist.com
SAVOY, RUGGLES & BOHM, P. A.
ENGINEERING & SURVEYING

4 MAR 99