

DRAINAGE PLAN FOR "EL CAMPESTRE"

AN ADDITION TO WICHITA, SEDGWICK COUNTY, KANSAS
IN THE NE CORNER OF THE NE 1/4 OF SECTION 32, T26S, R1E OF THE 6TH P.M.

BM

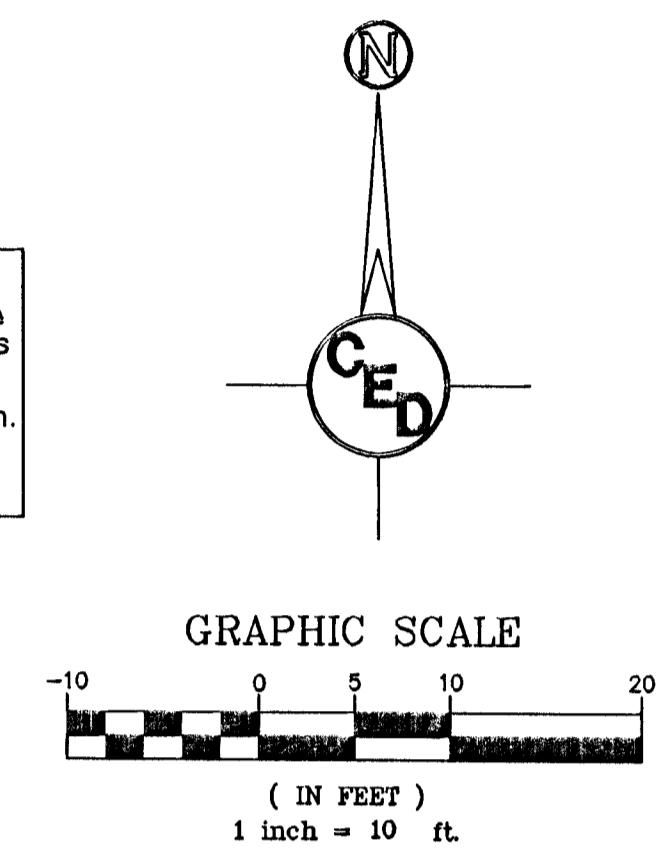
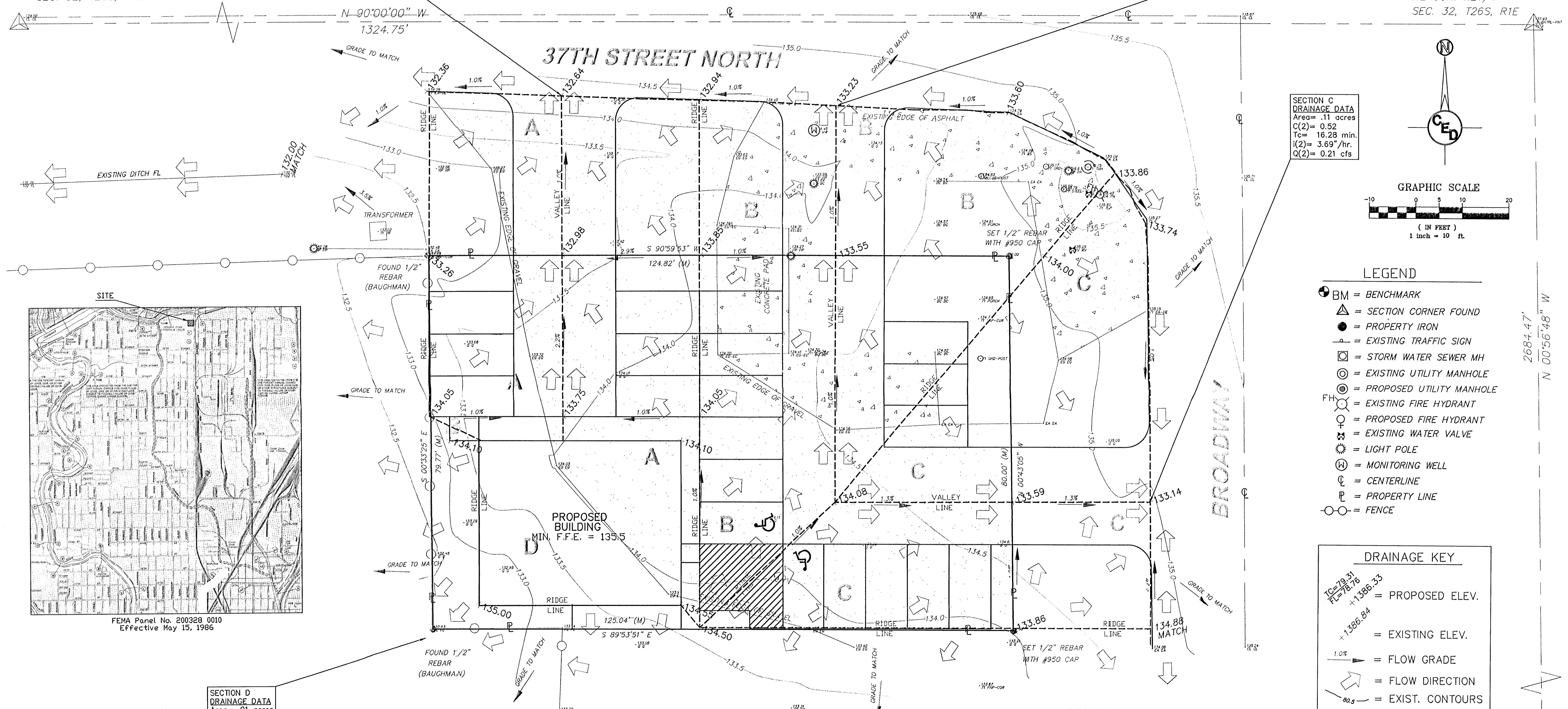
**SECTION A
DRAINAGE DATA**
Area = .10 acres
C(2) = 0.87
Tc = 1.79 min.
I(2) = 5.64"/hr.
Q(2) = 0.49 cfs

**SECTION B
DRAINAGE DATA**
Area = .13 acre
C(2) = 0.87
Tc = 2.36 min.
I(2) = 5.64"/hr.
Q(2) = 0.63 cfs

**SECTION C
DRAINAGE DATA**
Area = .11 acres
C(2) = 0.52
Tc = 16.28 min.
I(2) = 3.69"/hr.
Q(2) = 0.21 cfs

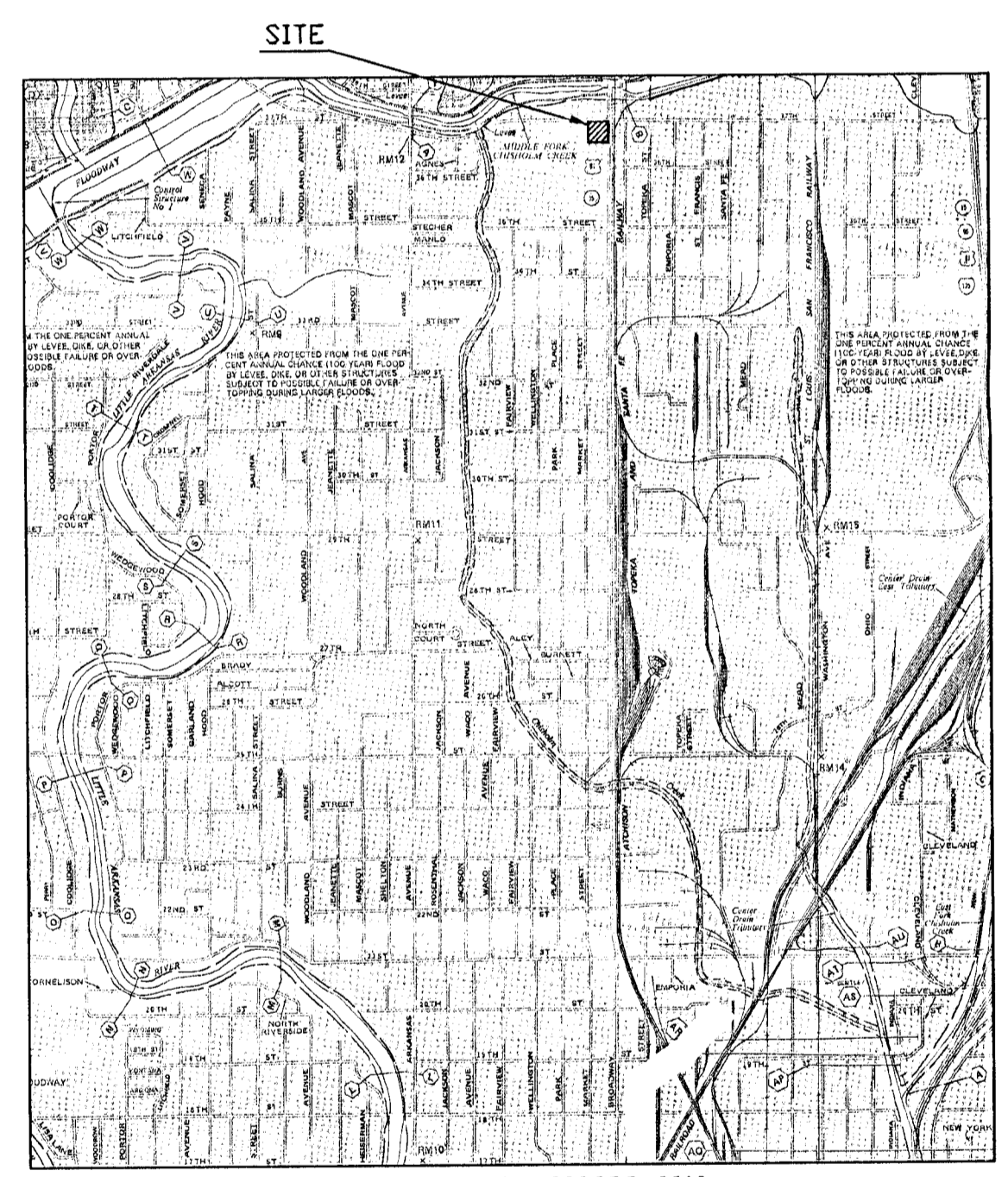
CALCULATED FROM
COUNTY TIES
NE COR. NE1/4
SEC. 32, T26S, R1E

FOUND 1/2"
REBAR
NW COR. NE1/4 OF THE NE1/4
SEC. 32, T26S, R1E



- LEGEND**
- BM = BENCHMARK
 - △ = SECTION CORNER FOUND
 - = PROPERTY IRON
 - ⊙ = EXISTING TRAFFIC SIGN
 - ⊠ = STORM WATER SEWER MH
 - ⊙ = EXISTING UTILITY MANHOLE
 - ⊙ = PROPOSED UTILITY MANHOLE
 - FH ⊙ = EXISTING FIRE HYDRANT
 - ⊙ = PROPOSED FIRE HYDRANT
 - ⊕ = EXISTING WATER VALVE
 - ⊙ = LIGHT POLE
 - ⊙ = MONITORING WELL
 - ⊙ = CENTERLINE
 - ⊙ = PROPERTY LINE
 - ⊙ = FENCE

- DRAINAGE KEY**
- 135.31
135.76
+1356.33 = PROPOSED ELEV.
 - +1366.84 = EXISTING ELEV.
 - 1.0% = FLOW GRADE
 - = FLOW DIRECTION
 - 132.5 = EXIST. CONTOURS
 - 135.0 = PROP. CONTOURS



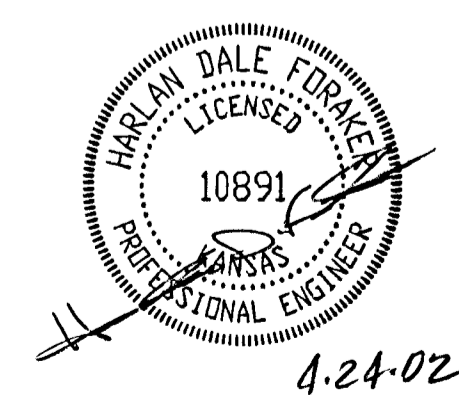
FEMA Panel No. 200328 0010
Effective May 15, 1986

**SECTION D
DRAINAGE DATA**
Area = .01 acres
C(2) = 0.52
Tc = 4.92 min.
I(2) = 5.64"/hr.
Q(2) = 0.03 cfs

BENCHMARK
C.O.W. BENCHMARK, 36 FEET WEST & 29 FEET NORTH OF CENTERLINE INTERSECTION OF 37TH STREET NORTH AND BROADWAY.
ELEVATION = 135.172 (CITY DATUM)

HORIZONTAL CONTROL POINTS

C.P. NO. 1	N 5022.21 E 5111.96	1/2" IRON, SEC CORNER, NE SEC 32, T26S, R1E
C.P. NO. 2	N 4971.39 E 4874.19	PROPERTY PIN, NW COR. 1/2" REBAR FOUND
C.P. NO. 3	N 4891.55 E 4875.20	PROPERTY PIN, SW COR. 1/2" REBAR FOUND



UTILITIES SHOWN REPRESENT THE BEST INFORMATION AVAILABLE FOR DESIGN. ADDITIONAL UTILITIES MAY BE PRESENT ON THIS PROJECT. THE CONTRACTOR SHALL BE RESPONSIBLE FOR DETERMINING THE EXACT LOCATION, DEPTH AND SIZE OF ALL UNDERGROUND UTILITIES PRIOR TO CONSTRUCTION. THE CONTRACTOR SHALL BE LIABLE FOR ANY DAMAGE CAUSED BY THE FAILURE TO DO SO.

DRAINAGE PLAN PREPARED BY:
CERTIFIED ENGINEERING DESIGN, P.A.
810 WEST DOUGLAS, SUITE C
WICHITA, KANSAS 67203
PH: (316) 262-8808
FAX: (316) 262-1669

SHEET	1
TOTAL	1