

PRELIMINARY PLAT DESCHNER ADDITION TO SEDGWICK COUNTY, KANSAS

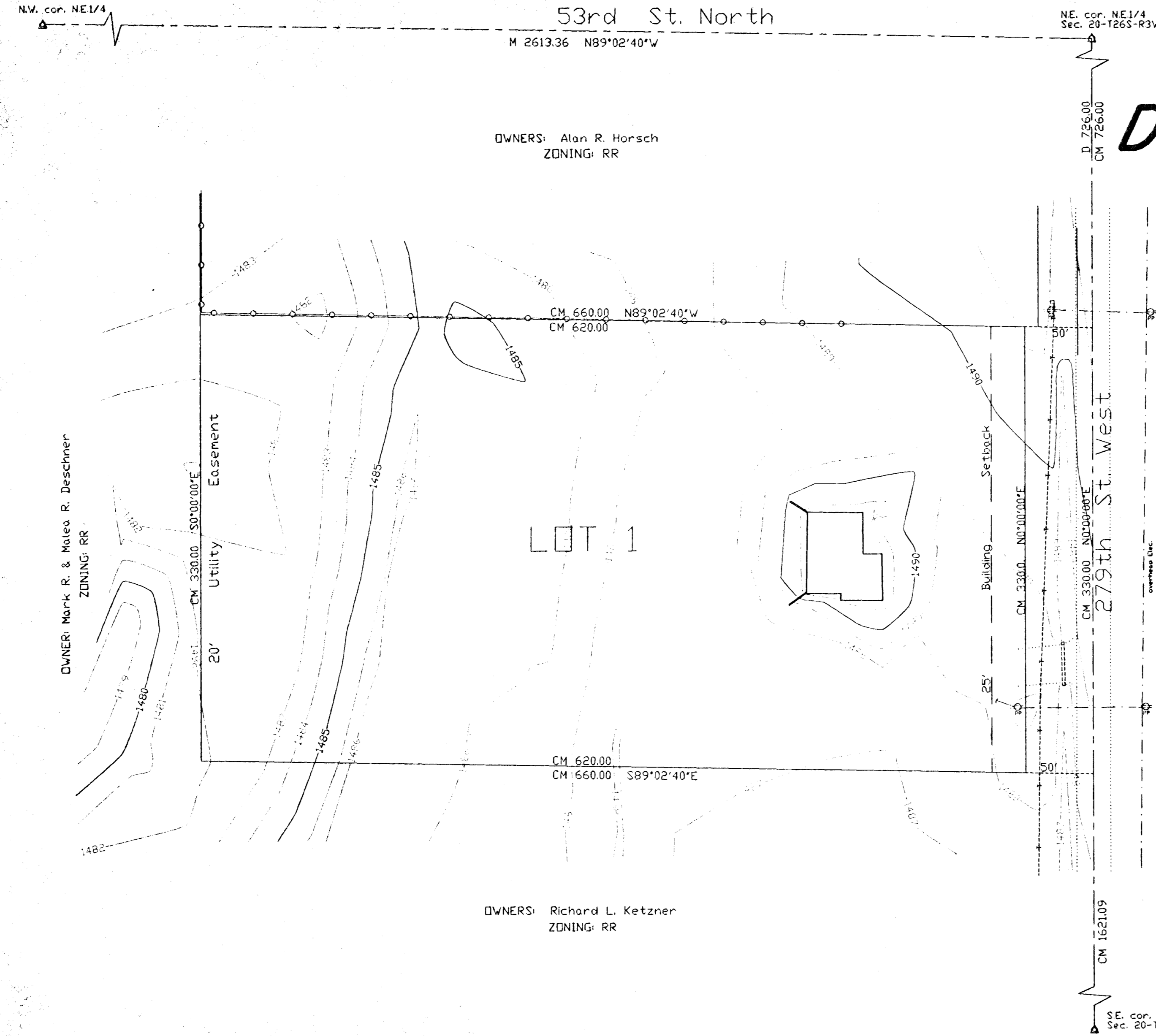
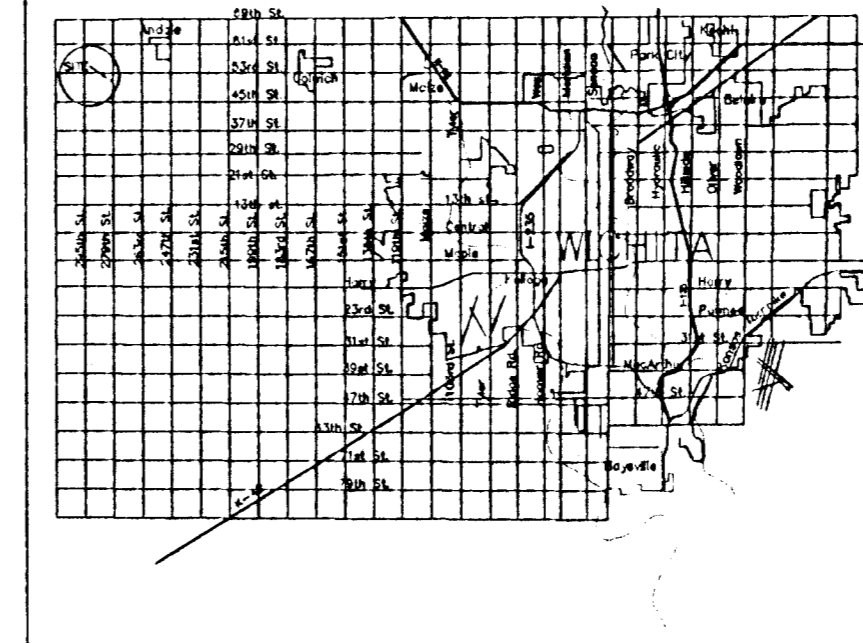
OWNER: Mark & Malea Deschner
5215 N. 279th W.
Mt Hope, KS 67108
ZONING: RR

LEGEND

- - set 5/8" rebar & "Armstrong" cap
- ⊙ - iron in thimble
- ▲ - found 3/4" iron pipe
- △ - found 1/2" rebar over stone
- M - measured distance
- P - plat distance
- CM - calculated from measured distance
- - property line
- - center line
- - - - - easement line
- - - - - setback line
- - - - - underground utility
- - - - - fence
- - cable TV riser
- - telephone riser
- - fire hydrant
- - elec. transformer
- - air conditioner
- - power pole
- - manhole
- - light pole
- - gas meter
- - gas valve
- - water meter
- - water valve
- ★ - coniferous tree

LOCATION MAP

SCALE 1"=60'



**ARMSTRONG
LAND SURVEY, P.A.**

250 N. MATHEWSON
WICHITA, KANSAS
PH - (316) 263-0082
Fax - (316) 263-0092