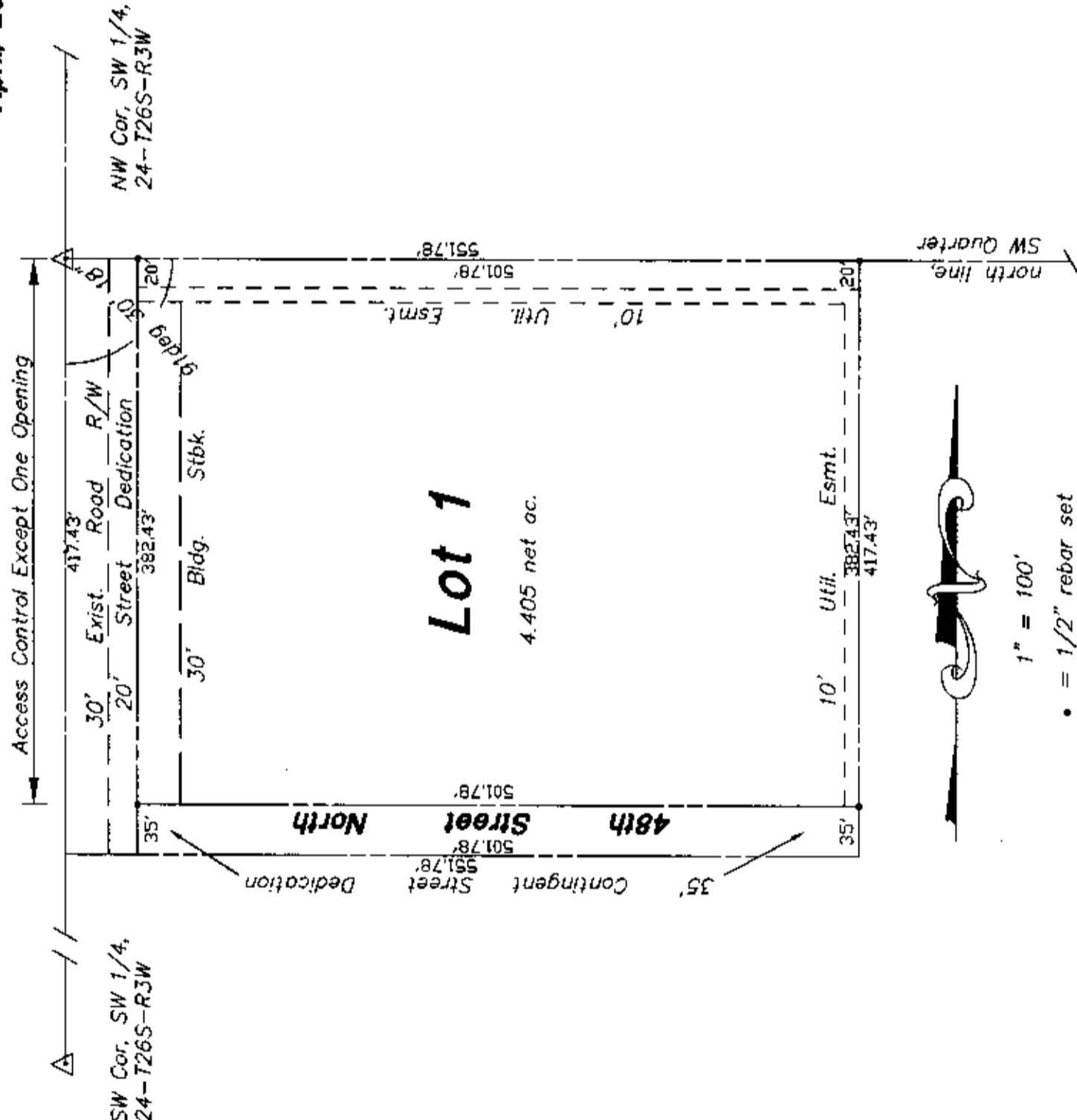


**Perimeter Closure Calculations
Doug Eck First Addition
an addition to
Sedgwick County, Kansas
April, 2000**

231st Street West



Lot 1
4.405 net ac.

SW Quarter
north line



1" = 100'
• = 1/2" rebar set

N 558.0295
E 245.7085

N 572.5216
E 797.2981

N 140.5995
E 245.7085

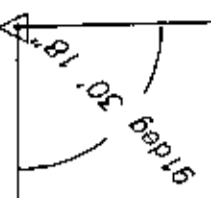
N 155.0916
E 797.2981

N88°29'42"E
551.78'

N88°29'42"E
551.78'

S00°00'00"W
417.43'

S00°00'00"W
417.43'



Access Control Except One Opening