

DREILING ACRES

SEDGWICK COUNTY, KANSAS

State of Kansas)
Sedgwick County) SS

We, Savoy, Ruggles & Bohm, P.A., Surveyors in aforesaid county and state do hereby certify that, under the supervision of the undersigned, we have surveyed and platted "DREILING ACRES", Sedgwick County, Kansas and that the accompanying plat is a true and correct exhibit of the property surveyed, described as follows:

That part of the W1/2 of the NW1/4 of Sec. 10, Twp. 28-S, R-2-W, of the 6th P.M., Sedgwick County, Kansas described as beginning at the N.E. Corner of the W1/2 of said NW1/4; thence S90°W, along the north line of the W1/2 of said NW1/4, 504.00 feet; thence S00°37'42"E, parallel with the east line of the W1/2 of said NW1/4, 519.75 feet; thence N90°E, 504.00 feet to a point on the east line of the W1/2 of said NW1/4; thence N00°37'42"W, along the east line of the W1/2 of said NW1/4, 519.75 feet to the place of beginning.

All Public easements and dedications being vacated by virtue of K.S.A. 12-512(b).

Savoy, Ruggles & Bohm, P.A.

Date 12-20-00



Mark A. Savoy Surveyor
Mark & Savoy, RLS #788

Know all men by these presents that we, the undersigned, have caused the land described in the surveyors certificate to be platted into a Lot, Block and Street to be known as "DREILING ACRES", Sedgwick County, Kansas. The Street is hereby dedicated to and for the use of the public. A drainage plan has been developed for this plat and all drainage easements, and rights-of-way shall remain at established grades or as modified with the approval of the County Engineer, and unobstructed to allow for the conveyance of stormwater. Access Controls are hereby granted to the appropriate governing body (as indicated on the face of the plat). The Minimum Pad Elevation for lowest opening is as shown on the face of the plat.

Kenneth A. Weber
Kenneth A. Weber

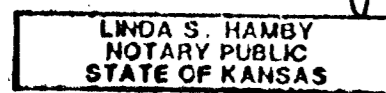
Carmen B. Weber
Carmen B. Weber

State of Kansas)
Sedgwick County) SS

The foregoing instrument acknowledged before me, this 7th day of December, 2000, by Kenneth A. Weber and Carmen B. Weber, husband and wife.

Linda S. Hamby Notary Public

My App't. Exp. 10-30-03



This plat of "DREILING ACRES", Sedgwick County, Kansas, has been submitted to and approved by the Wichita-Sedgwick County Metropolitan Area Planning Commission, Wichita, Kansas.

Dated this _____ day of _____, 2000.

Wichita-Sedgwick County Metropolitan Area Planning Commission

Jerry Michaelis Chairman

Marvin S. Krout Secretary

State of Kansas)
Sedgwick County) SS

This plat approved and all dedications shown hereon, are hereby accepted by the Board of County Commissioners, Sedgwick County, Kansas, on _____, 20__.

Thomas G. Winters Chairman

James Alford County Clerk

Entered on transfer record this _____ day of _____, 20__.

James Alford County Clerk

Reviewed in accordance with K.S.A. 58-2005 on this _____ day of _____, 2000.

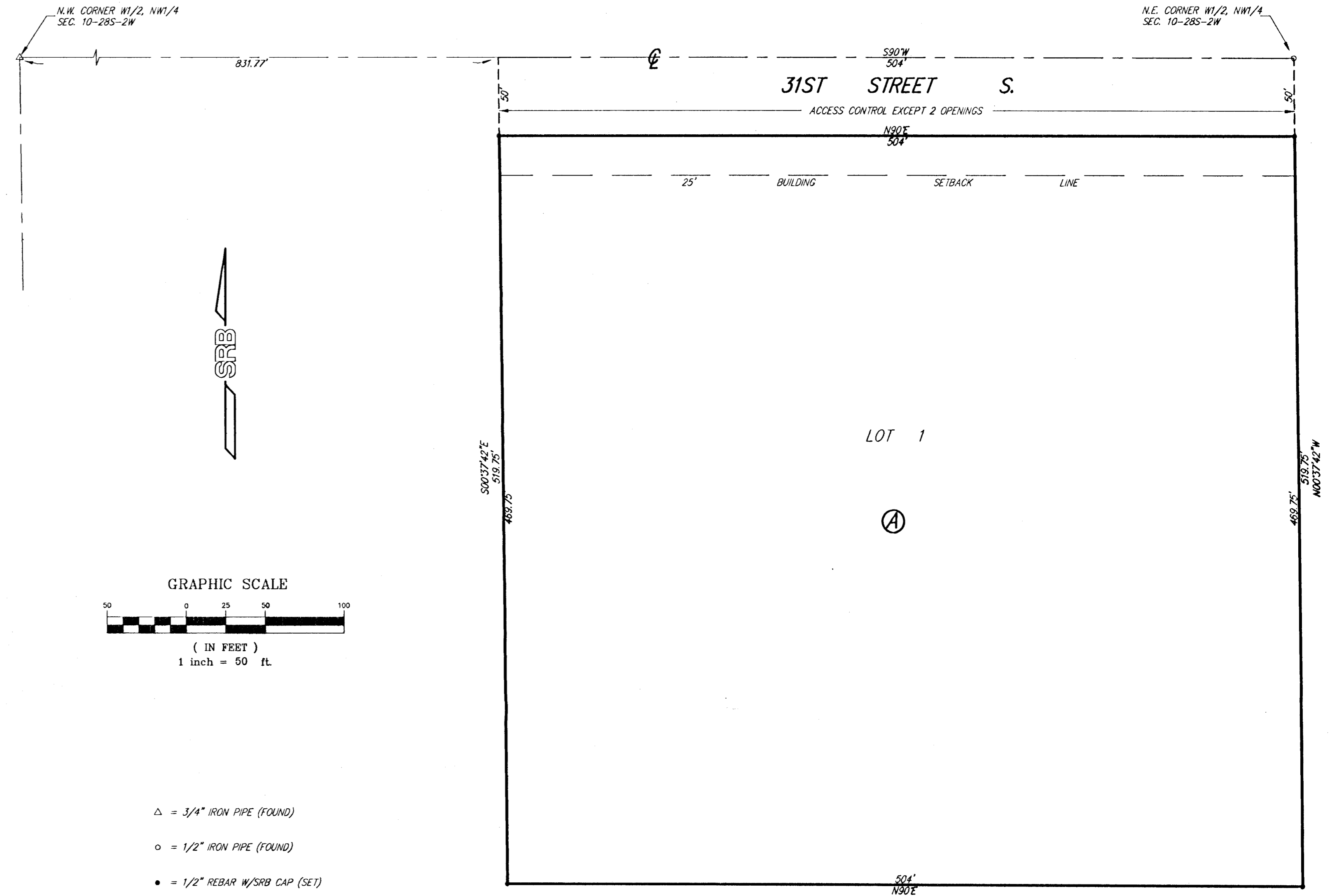
Tricia L. Robello, LS #1246 Deputy County Surveyor
Sedgwick County Kansas

State of Kansas)
Sedgwick County) SS

This is to certify that this plat has been filed for record in the office of the Register of Deeds, this _____ day of _____, 20__, at _____ o'clock _____ M. and is duly recorded.

Bill Meek Register of Deeds

Linda Kizzire Deputy



MINIMUM BUILDING PAD ELEVATION FOR
LOWEST OPENING INTO STRUCTURES = 1415 NGVD

BENCH MARK: R.R. SPIKE IN HIGH LINE POLE
44'± N.E. OF S.W. COR. OF SW1/4 OF
SEC. 2-28-2W.
ELEV.=1395.58 (N.G.V.D.)

ON SITE B.M.: R.R. SPIKE IN POWER POLE
N. SIDE OF 31ST ST. S. & 362'± W. OF N.E.
COR. OF W1/2 OF NW1/4 OF SEC. 10-28-2W.
ELEV.=1421.24 (N.G.V.D.)