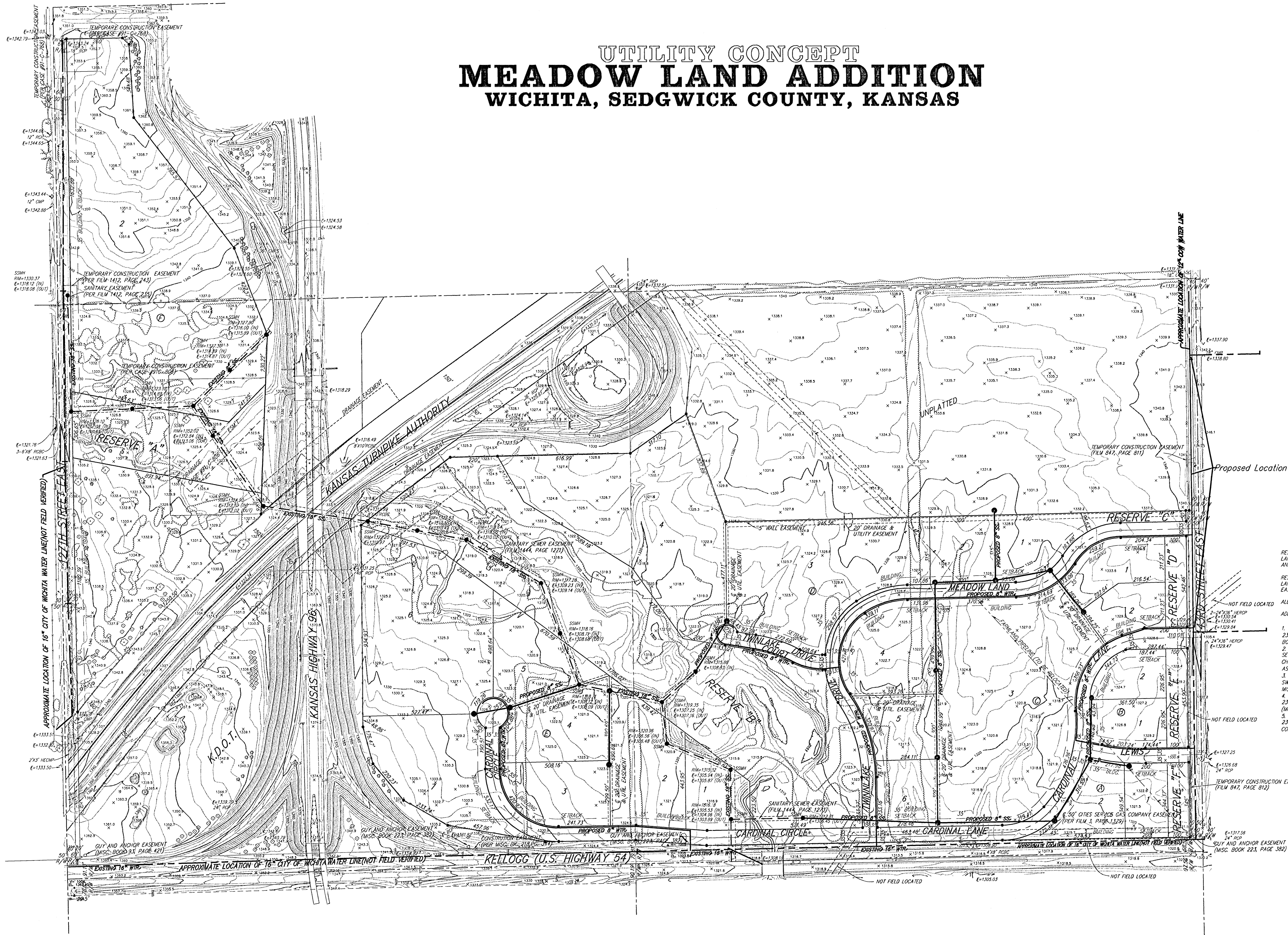
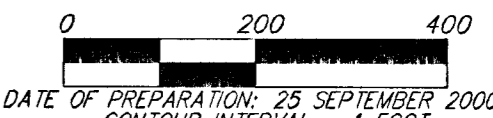


UTILITY CONCEPT MEADOW LAND ADDITION WICHITA, SEDGWICK COUNTY, KANSAS



Proposed Location of 12" Water Main



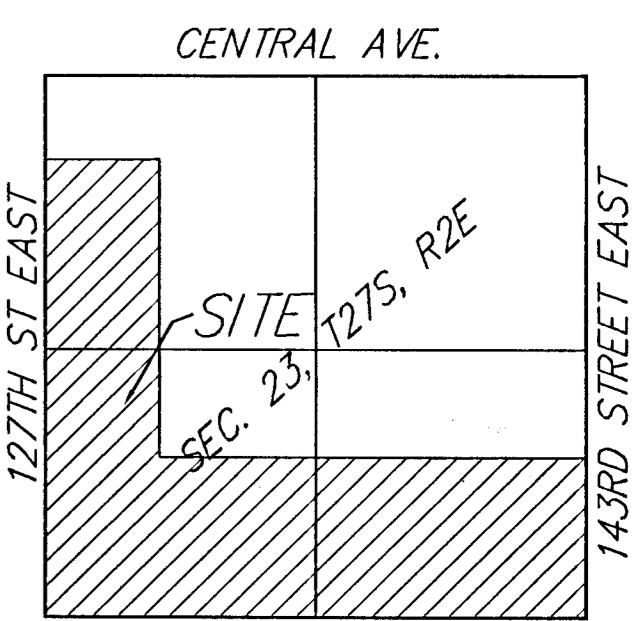
RESERVES "A" AND "B" ARE RESERVED FOR RECREATION, DRAINAGE, LANDSCAPING, OPEN SPACE, UTILITIES AS CONFINED TO EASEMENTS, AND SIDEWALKS.

RESERVES "C", "D", "E", AND "F" ARE RESERVED FOR DRAINAGE, LANDSCAPING, SIGNAGE, OPEN SPACE, UTILITIES AS CONFINED TO EASEMENTS, AND SIDEWALKS.

ALL SANITARY SEWER INFORMATION IS PER PLAN.

ADDITIONAL BUILDING SETBACKS PER C.U.P.-24B.

1. BLANKET PIPELINE EASEMENT OVER THE SE 1/4 OF SEC. 23-27-26, GRANTED TO CITIES SERVICE GAS COMPANY (MISC BOOK 47, PAGE 364).
2. BLANKET PIPELINE EASEMENT OVER THE W 1/2 SW 1/2 SEC. 23 GRANTED TO OZARK PIPELINE CO. AND ASSIGNED TO CHEROKEE PIPELINE CO. (BOOK MISC. 77, PG. 473 AND ASSIGNED TO CONOCO PIPELINE).
3. BLANKET PIPELINE EASEMENT OVER THE W 1/2 W 1/2 SW 1/4 GRANTED TO CHEROKEE PIPELINE COMPANY (BOOK MISC. 345 PG. 404).
4. BLANKET PIPELINE EASEMENT OVER THE SE 1/4 OF SEC. 23-27-26 GRANTED TO COOPERATIVE RETIREMENT ASSOCIATION (MISC. BOOK 241, PAGE 477) (FILM 847, PAGE 1335).
5. BLANKET EASEMENT OVER THE NW 1/4 OF SEC. 23-27-26, GRANTED TO SHELL PIPELINE LINE CORPORATION COMPANY (FILM 77, PAGE 436).



KELLOGG (U.S. HIGHWAY 54) VICINITY MAP