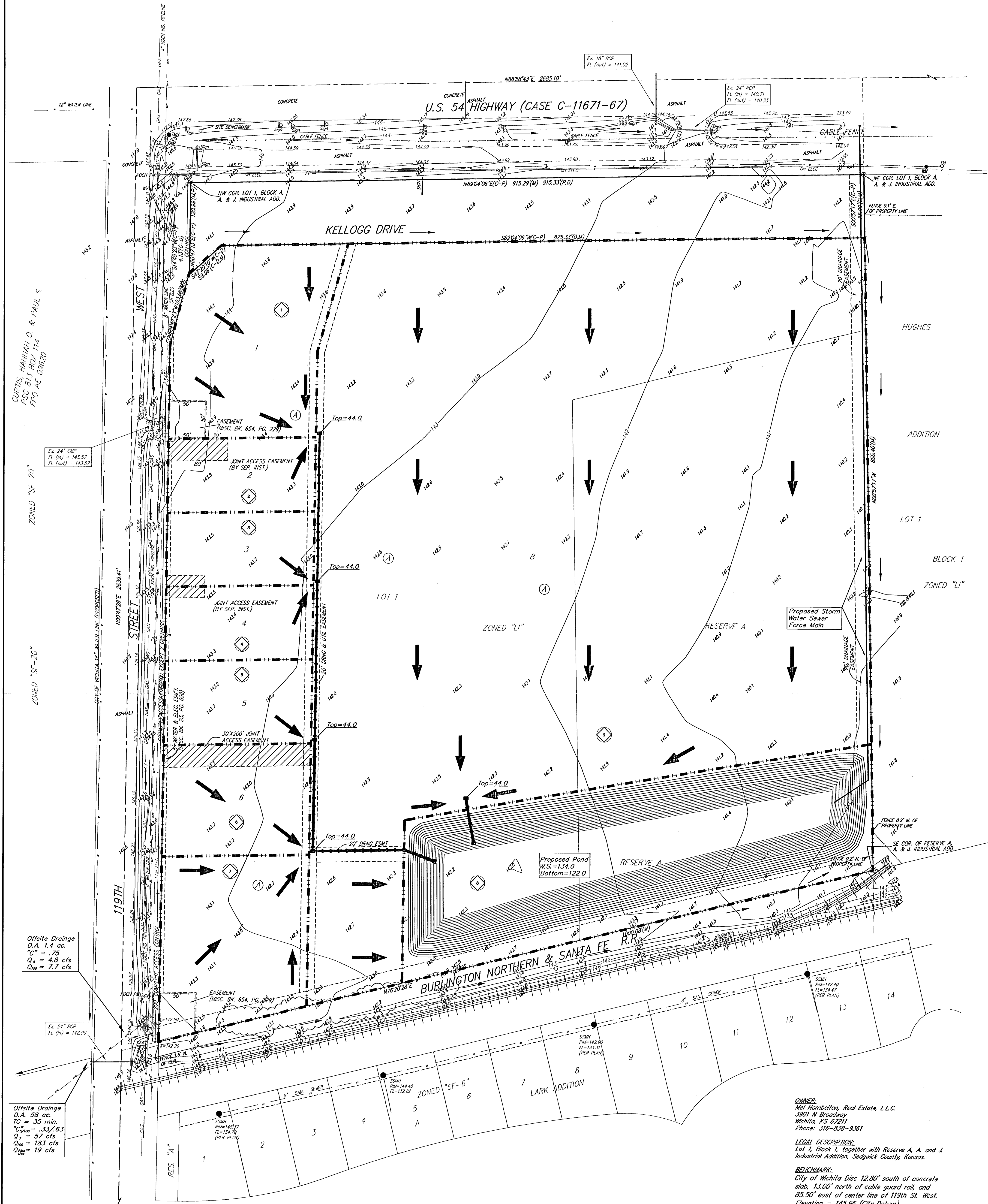


# DRAINAGE CONCEPT

## MEL HAMBELTON ADDITION

### WICHITA, SEDGWICK COUNTY, KANSAS



CURTIS, HANNAH, O. & PAUL S.  
S.C. B.L. BOY 114  
P.P.O. A.E. 08820

Ex 24" COP  
FL (0+) = 143.57  
FL (100) = 143.57

ZONED "SF-20"

Offsite Drainage  
D.A. 1.4 ac.  
TC = 35 min.  
C<sub>o</sub> = .75  
Q<sub>10</sub> = 4.8 cfs  
Q<sub>50</sub> = 7.7 cfs

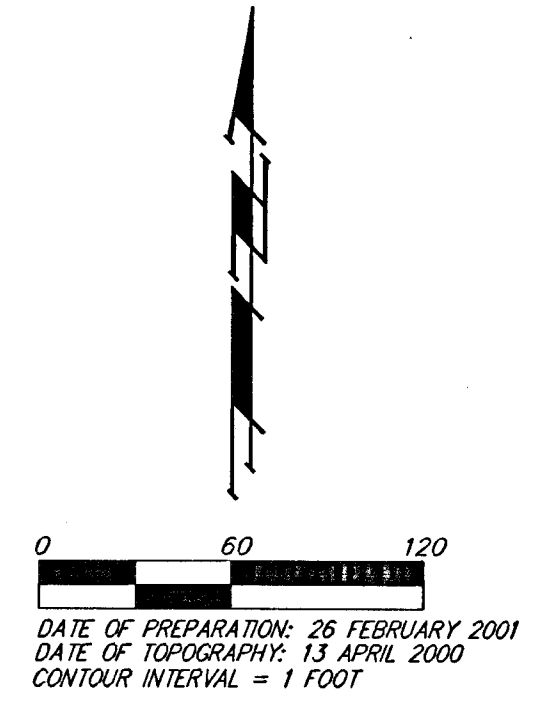
Offsite Drainage  
D.A. 58 ac.  
TC = 35 min.  
C<sub>o</sub> = .75  
Q<sub>10</sub> = 57 cfs  
Q<sub>50</sub> = 183 cfs  
Q<sub>100</sub> = 19 cfs

Drainage Area	Area (acres)	C <sub>o</sub>	C <sub>u</sub>	T <sub>c</sub> (min)	I <sub>1</sub> (in/hr)	I <sub>2</sub> (in/hr)	I <sub>3</sub> (in/hr)	Q <sub>10</sub> (cfs)	Q <sub>50</sub> (cfs)	Q <sub>100</sub> (cfs)
1	1.20	.85	.91	15	4.56	7.37	4.7	1.8	3.1	8.0
2	0.46	.85	.91	15	4.56	7.37	1.8	3.1	8.0	
3	0.46	.85	.91	15	4.56	7.37	1.8	3.1	8.0	
4	0.46	.85	.91	15	4.56	7.37	1.8	3.1	8.0	
5	0.53	.85	.91	15	4.56	7.37	2.1	3.6	9.0	
6	0.69	.85	.91	15	4.56	7.37	2.7	4.6	11.0	
7	1.04	.85	.91	15	4.56	7.37	4.0	7.0	17.0	
8	2.87	.85	.91	15	4.56	7.37	11	19	47	
9	13.44	.85	.91	15	4.56	7.37	52	90	220	

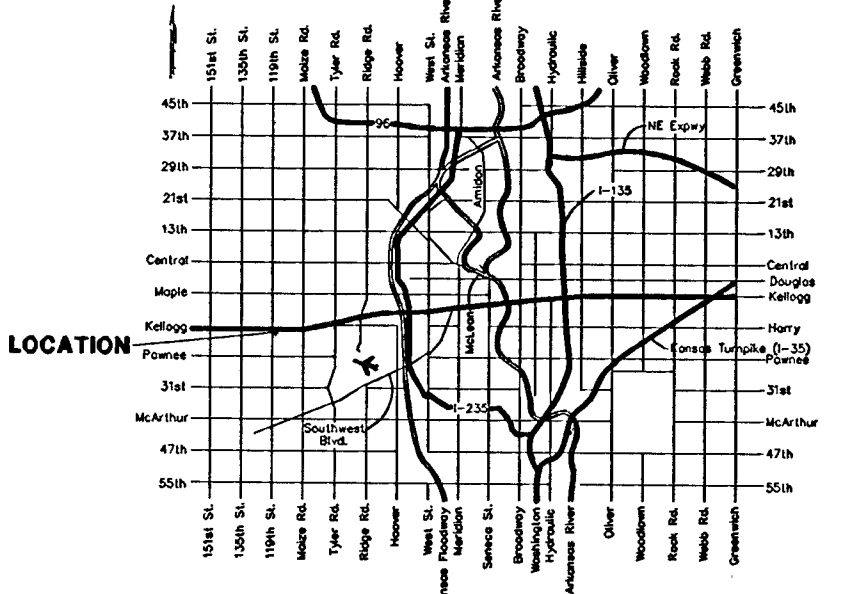
**DRAINAGE NOTE:**

- The Existing Soil Type per Soil Survey of Sedgwick County, Kansas is Toller and is a Hydrologic Group D.
- This Parcel of Land is Not Located in a FEMA Special Flood Hazard Zone Area Per Revised FIRM Map, (Community) Panel Number: 200329 (02020) Effective Date: June 26, 1997.

- = #4 REBAR W/ "BAUGHMAN" CAP (SET)
- ⊙ = OLD FENCE RAIL (FOUND)
- ⊗ = SECTION CORNER (FOUND)
- (M) = MEASURED
- (D) = DESCRIBED
- (P) = PLATTE
- (C) = CALCULATED
- EM = Electric Meter
- FH = Fire Hydrant
- GA = Guy Anchor
- PM = Pipe Marker
- PP = Power Pole
- SP = Signal Pole
- SM = Sign
- TM = Traffic Manhole
- WM = Water Meter
- WV = Water Valve



DATE OF PREPARATION: 26 FEBRUARY 2001  
DATE OF TOPOGRAPHY: 13 APRIL 2000  
CONTOUR INTERVAL: 1 FOOT



**OWNER:**  
Mel Hamblton, Real Estate, L.L.C.  
3501 N Broadway  
Wichita, KS 67211  
Phone: 316-251-9361

**LEGAL DESCRIPTION:**  
Lot 1, Block 1, together with Reserve A, A. & J. Industrial Addition, Sedgwick County, Kansas.

**BENCHMARK:**  
City of Wichita Disc 12.80' south of concrete slab, 13.00' north of cable guard rail, and 83.30' east of center line of 119th St. West. Elevation = 143.98 (City Datum)

**RESERVE "A":**  
Reserve "A" is hereby reserved for drainage purposes, open space, landscaping, parking lot, access road, and utilities as confined to easements.