

**LEGAL DESCRIPTION**

The West Half of the South Half of the North Half of the Northwest Quarter of the Southwest Quarter of Section 21, Township 28 South, Range 2 West of the Sixth Principal Meridian, Sedgwick County, Kansas.

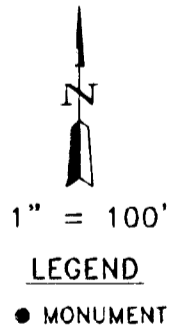
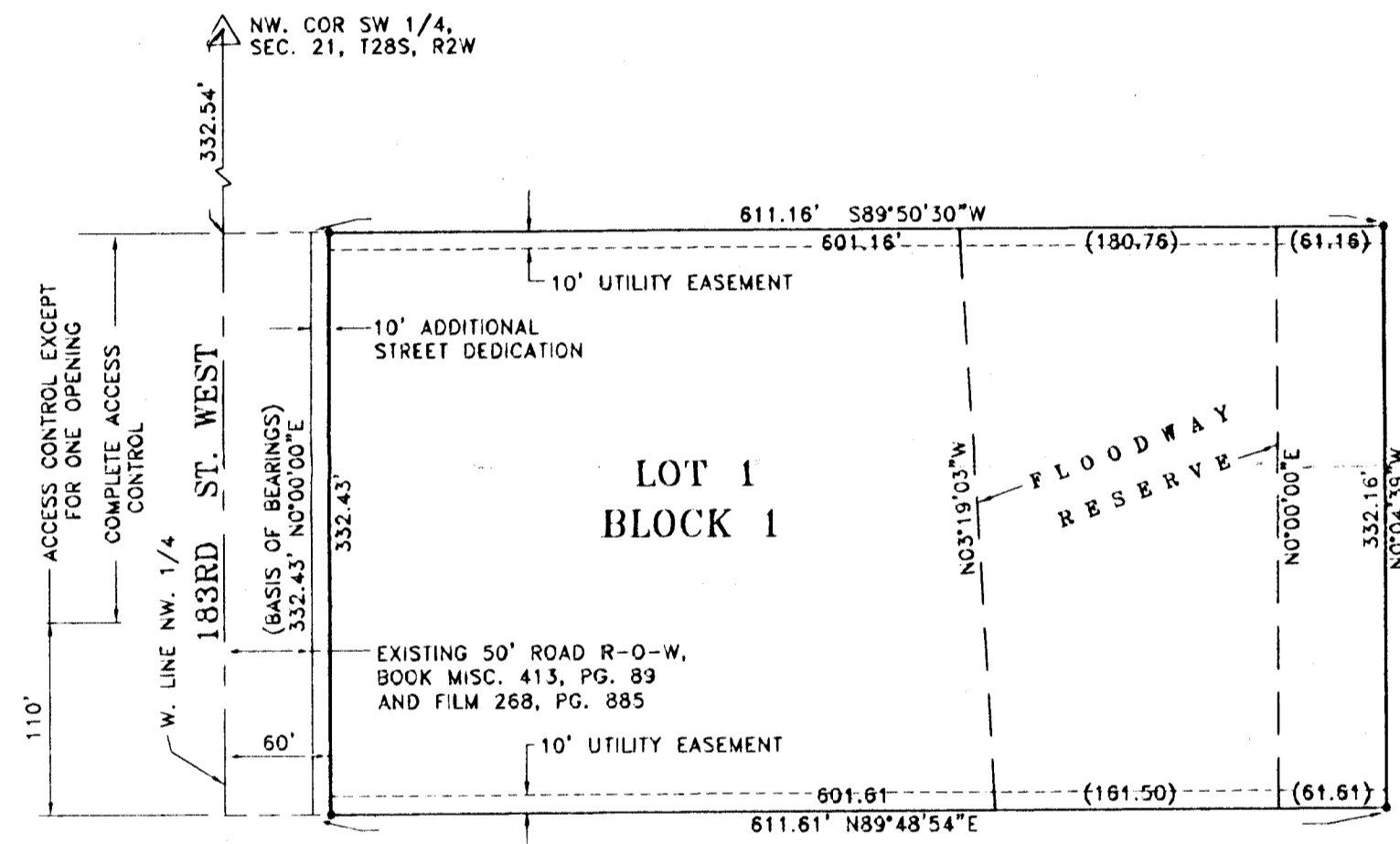
STATE OF KANSAS )  
COUNTY OF SEDGWICK ) SS

We, Reiss & Goodness, Inc., surveyors in aforesaid County and State, do hereby certify that we have caused the tract of land as set forth in the Legal Description to be surveyed and platted and that said survey and the accompanying exhibit are true and correct to the best of our knowledge and information available. Previously dedicated easements and Floodway Reserve are hereby vacated by virtue of K.S.A. 12-512(b).

REISS & GOODNESS, INC.



4-15-2003  
DATE



**FINAL PLAT**  
**MIAMI DOLPHINS ADDITION**  
SEDGWICK COUNTY, KANSAS  
2003

**BENCH MARK:**  
60d NAIL IN H.L.P., WEST SIDE OF CUL-DE-SAC NORTH END OF 179TH STREET WEST NEAR THE NORTH LINE OF THE SW 1/4 OF SEC. 21. ELEVATION 1392.92 m.s.l.

MINIMUM BUILDING PAD TABLE FOR ESTABLISHING LOWEST OPENING TO STRUCTURES		
LOT	BLOCK	ELEVATION (m.s.l.)
1	1	1395.0

Know all men by these presents that we, Michael Craig Wilson and Patricia D. Wilson, husband and wife, have caused the tract of land as set forth in the Legal Description to be surveyed and platted into a lot, a block, a street and a reserve to be known as Miami Dolphins Addition, Sedgwick County, Kansas. Easements are hereby granted as indicated for utility construction and maintenance. The street is hereby dedicated to and for the use of the public. Access control as indicated on the face of the plat is hereby granted to the appropriate governing body. The floodway reserve shall be owned and maintained by the property owners until such time as the governing body exercising jurisdiction elects to assume the responsibility for the maintenance and improvement of drainage, provided further that no structures shall be constructed on or within said floodway reserve, nor shall any fill, change of grade, creation of channel or other work be carried on without the permission of the appropriate governing body. A drainage plan has been developed for the plat known as Miami Dolphins Addition and all drainage easements, rights-of-way or reserves shall remain at established grades or as modified with the approval of the County Engineer and unobstructed to allow for the conveyance of stormwater. The minimum building pad elevations for the lowest opening to the structures shall be as indicated on the accompanying minimum building pad table.

*Michael Craig Wilson*  
MICHAEL CRAIG WILSON  
*Patricia D. Wilson*  
PATRICIA D. WILSON

STATE OF KANSAS )  
COUNTY OF SEDGWICK ) SS

The foregoing instrument was acknowledged before me this 21st day of April, 2003 by Michael Craig Wilson and Patricia D. Wilson, husband and wife.

*Rose Mary Saunders*, Notary Public  
My Appointment Expires: 7-29-05

This plat of Miami Dolphins Addition, Sedgwick County, Kansas has been submitted to and approved by the Wichita-Sedgwick County Metropolitan Area Planning Commission, Wichita, Kansas.

Dated this \_\_\_\_\_ day of \_\_\_\_\_, 20\_\_\_\_.

BERNARD A. HENTZEN, Chair

DALE MILLER, Secretary

Reviewed in accordance with K.S.A. 58-2005 on this \_\_\_\_\_ day of \_\_\_\_\_, 20\_\_\_\_.

TRICIA L. ROBELLO, LS #1246  
Deputy County Surveyor  
Sedgwick County, Kansas

This plat has been approved and all dedications shown hereon accepted by the Board of County Commissioners of Sedgwick County, Kansas, this \_\_\_\_\_ day of \_\_\_\_\_, 20\_\_\_\_.

TIM R. NORTON, Chairman

DON BRACE, County Clerk

Entered on transfer record this \_\_\_\_\_ day of \_\_\_\_\_, 20\_\_\_\_.

DON BRACE, County Clerk

STATE OF KANSAS )  
COUNTY OF SEDGWICK ) SS

This is to certify that this instrument was filed for record in the Register of Deeds office at \_\_\_\_\_ o'clock \_\_\_\_\_ M. on the \_\_\_\_\_ day of \_\_\_\_\_, 20\_\_\_\_.

BILL WEEK, Register of Deeds

LINDA KIZZIRE, Deputy

*Final Plat*

C:\DATA\SWMP\UPDATES\MIAMI\MIAMI.DWG 4/2003