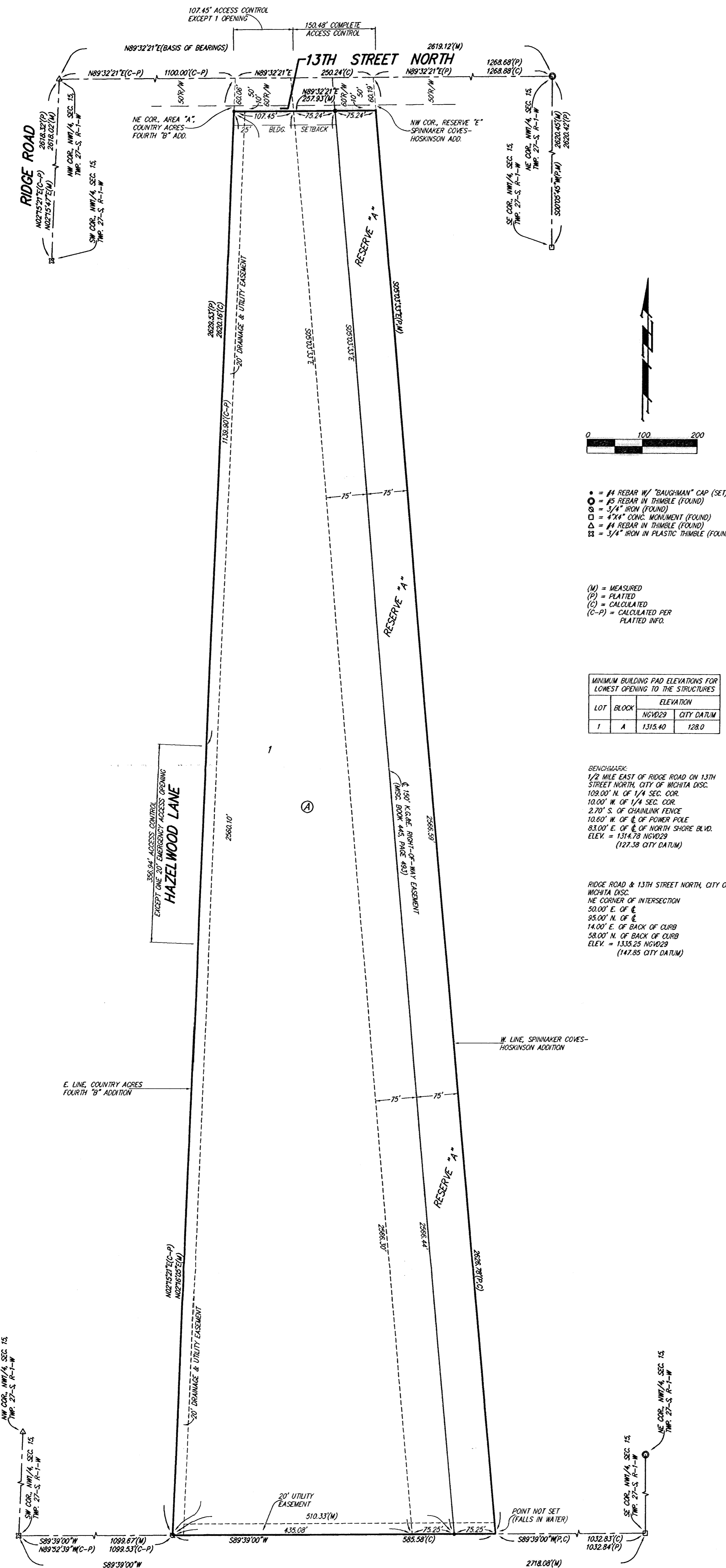


# MIDIAN SHRINE-HOSKINSON ADDITION

## WICHITA, SEDGWICK COUNTY, KANSAS



- = #4 REBAR W/ "BAUGHMAN" CAP (SET)
  - = #5 REBAR IN TRIMBLE (FOUND)
  - = 3/4" IRON (FOUND)
  - △ = 4"x4" CONC. MONUMENT (FOUND)
  - ◇ = #1 REBAR IN TRIMBLE (FOUND)
  - = 3/4" IRON IN PLASTIC TRIMBLE (FOUND)
- (M) = MEASURED  
(P) = PLATTED  
(C) = CALCULATED  
(C-P) = CALCULATED PER PLATTED INFO.

LOT	BLOCK	NGVD29	CITY DATUM
1	A	1315.40	128.0

**BENCHMARKS:**  
 1/2 MILE EAST OF RIDGE ROAD ON 13TH STREET NORTH, CITY OF WICHITA DISC.  
 100.00' N. OF 1/4 SEC. COR.  
 10.00' W. OF 1/4 SEC. COR.  
 2.70' S. OF CHAINLINK FENCE  
 10.00' W. OF E. OF POWER POLE  
 43.00' E. OF E. OF NORTH SHORE BLDG.  
 ELEV. = 1314.78 NGVD29  
 (127.38 CITY DATUM)

**RIDGE ROAD & 13TH STREET NORTH, CITY OF WICHITA DISC.**  
 NE CORNER OF INTERSECTION  
 50.00' E. OF E.  
 25.00' N. OF E.  
 14.00' E. OF BACK OF CURB  
 58.00' N. OF BACK OF CURB  
 ELEV. = 1335.25 NGVD29  
 (147.85 CITY DATUM)

NOTE:  
 PLEASE CONTACT WESTAR ENERGY (OR ITS SUCCESSOR) ELECTRIC TRANSMISSION LINE ENGINEERING DEPARTMENT (CURRENTLY 725-575-4153) BEFORE CONDUCTING ANY PROPOSED CONSTRUCTION ACTIVITIES THAT COULD PLACE PEOPLE, EQUIPMENT, OR FACILITIES WITHIN WESTAR'S EASEMENT, SHOWN ON THIS PLAT, DESIGNATED AS MISC. BOOK 445, PAGE 493 DATED JULY 20, 1992.

NOTE:  
 A DRAINAGE PLAN HAS BEEN DEVELOPED FOR THIS SUBDIVISION AND IS ON FILE WITH THE CITY OF WICHITA, KANSAS. DRAINAGE INTENT SHALL REMAIN AS DEPICTED OR AS MODIFIED WITH THE APPROVAL OF THE CITY ENGINEER OF THE CITY OF WICHITA, KANSAS. NO OBSTRUCTIONS WHICH IMPEDE THE FLOW OF THIS DRAINAGE PLAN SHALL BE ALLOWED.

State of Kansas) SS  
 Sedgwick County) We, Baughman Company, P.A., Surveyors in aforesaid county and state do hereby certify that we have surveyed and platted "MIDIAN SHRINE-HOSKINSON ADDITION", Wichita, Sedgwick County, Kansas and that the accompanying plat is a true and correct exhibit of the property surveyed, described as all that portion of the NW1/4 of Sec. 15, Twp. 27-S, R-1-W of the 6th P.M., Sedgwick County, Kansas, lying east of Country Acres Fourth "B" Addition, an Addition in Sedgwick County, Kansas, EXCEPT the east 330 feet of the north 660 feet, and EXCEPT Tract #88 of Condemnation Case No. A-31849, further described as: A tract of land in the NW1/4 of Sec. 15, Twp. 27-S, R-1-W of the 6th P.M., beginning at the center of said Sec. 15; thence S89°39'W, 167.51 feet; thence along a 00°54.32' curve described by the following chord bearings and distances: N17°22'E, 64.02 feet; N22°22'E, 392.02 feet; thence S00°05'W, 422.63 feet to the point of beginning, and EXCEPT the south 30 feet of the north 690 feet of the east 297 feet of the NW1/4 of Sec. 15, Twp. 27-S, R-1-W of the 6th P.M., Sedgwick County, Kansas, and EXCEPT that part platted as Spinnaker Coves-Hoskinson Addition, Wichita, Sedgwick County, Kansas, all being subject to road rights-of-way of record.

Existing public easements and dedications being vacated by virtue of K.S.A. 12-512(b).  
 Baughman Company, P.A.

Michael G. Conroy  
 Michael G. Conroy, Surveyor

Know all men by these presents that we, the undersigned, have caused the land in the surveyors certificate to be platted into a Lot, a Block, a Street, and a Reserve, to be known as "MIDIAN SHRINE-HOSKINSON ADDITION", Wichita, Sedgwick County, Kansas. The utility easement is hereby granted as indicated for the construction and maintenance of all public utilities. The drainage and utility easement is hereby granted as indicated for drainage purposes and for the construction and maintenance of all public utilities. The street is hereby dedicated to and for the use of the public. Reserve "A" is hereby reserved for landscaping, open space, lakes, berms, drainage purposes, retaining walls, electric lines and related appurtenances as confined to easement, and utilities as confined to easement. Reserve "A" shall be owned and maintained by the owner of Lot 1, Block A. Access controls shall be as depicted on the face of the plat and are hereby granted to the City of Wichita, Kansas. The permitted opening location shall be as determined by the City Engineer of the City of Wichita, Kansas. The 20 foot emergency access opening is hereby granted to the City of Wichita, Kansas. The location of the 20 foot emergency access opening shall be as determined by the City of Wichita Fire Department. The Minimum Building Pad Elevation for the lowest opening to the structures shall be as indicated on the face of the plat.

Richard D. Hoskinson Verda M. Hoskinson  
 Richard D. Hoskinson Verda M. Hoskinson

State of Kansas) SS  
 Sedgwick County) The foregoing instrument acknowledged before me, this 10<sup>th</sup> day of SEPTEMBER, 2004, by Richard D. Hoskinson and Verda M. Hoskinson, husband and wife.

Judith M. Terhune  
 Judith M. Terhune, Notary Public

This plat of "MIDIAN SHRINE-HOSKINSON ADDITION", Wichita, Sedgwick County, Kansas has been submitted to and approved by the Wichita-Sedgwick County Metropolitan Area Planning Commission, Wichita, Kansas.  
 Dated this \_\_\_\_\_ day of \_\_\_\_\_, 2004.  
 Wichita-Sedgwick County Metropolitan Area Planning Commission

Ronald L. Marnell, Chair  
 John L. Schlegel, Secretary

This plat approved and all dedications shown hereon accepted by the City Council of the City of Wichita, Kansas, this \_\_\_\_\_ day of \_\_\_\_\_, 2004.

Carlos Mayans, Mayor  
 Karen Sublett, City Clerk

Reviewed in accordance with K.S.A. 58-2005 on this \_\_\_\_\_ day of \_\_\_\_\_, 2004.

Tricia L. Robello, L.S. #1246  
 Deputy County Surveyor  
 Sedgwick County, Kansas

Entered on transfer record this \_\_\_\_\_ day of \_\_\_\_\_, 2004.

Don Brace, County Clerk

State of Kansas) SS  
 Sedgwick County) This is to certify that this plat has been filed for record in the office of the Register of Deeds, this \_\_\_\_\_ day of \_\_\_\_\_, 2004 at \_\_\_\_\_ o'clock \_\_\_\_\_ M.; and is duly recorded.

Bill Meek, Register of Deeds  
 Linda Kizzire, Deputy