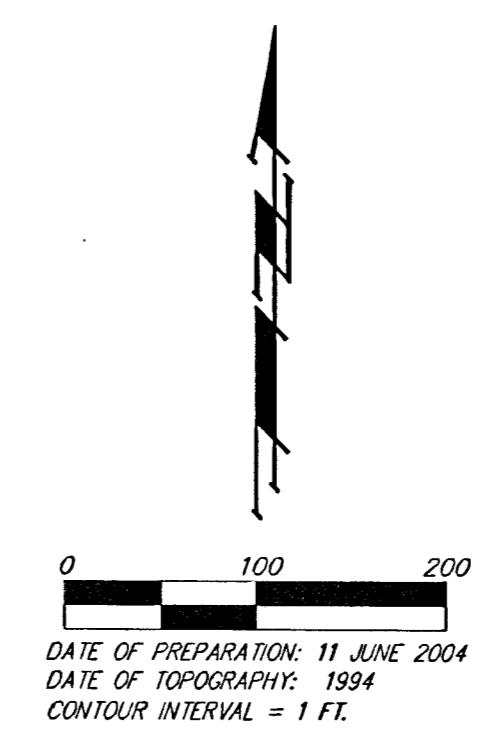
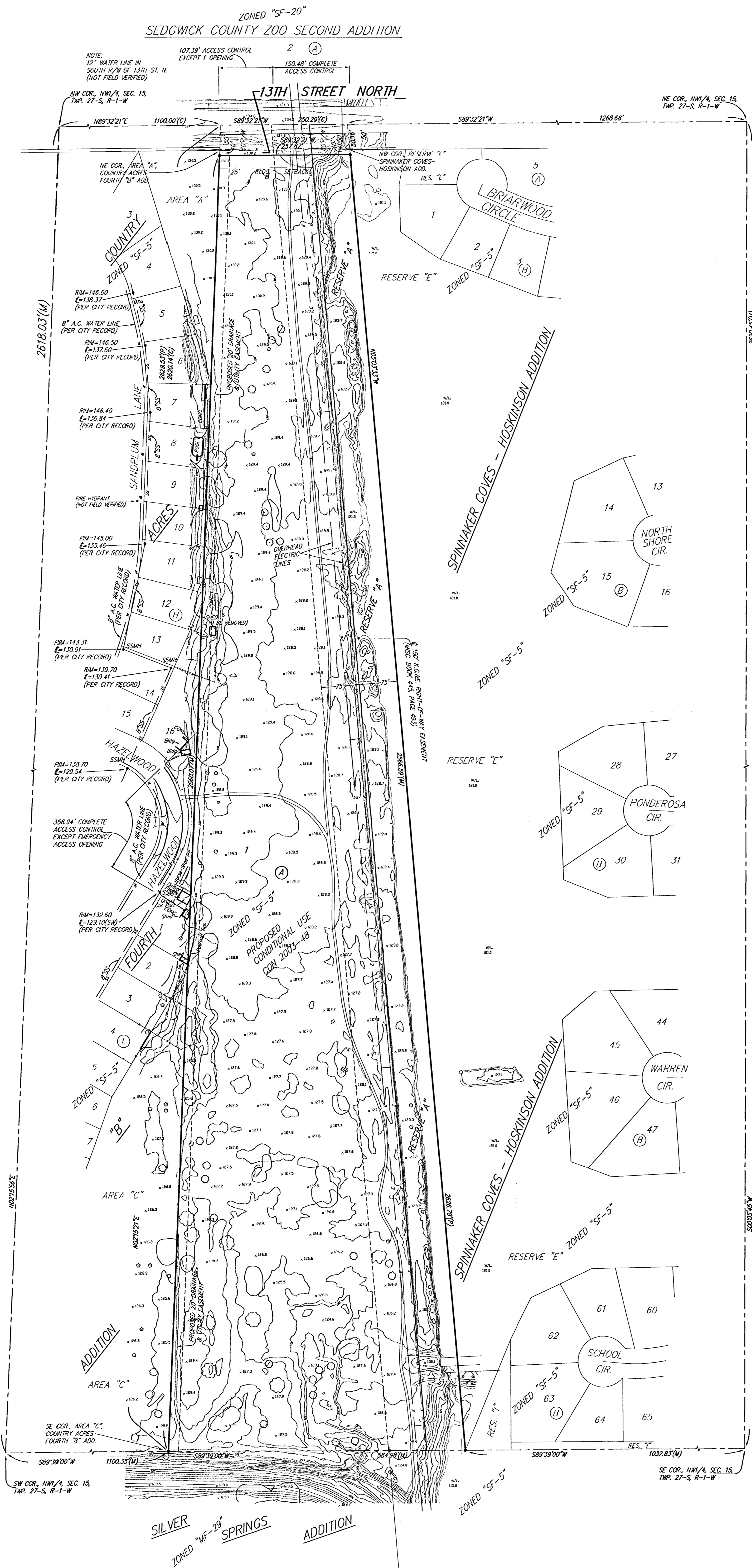


PRELIMINARY PLAT
MIDIAN SHRINE ADDITION
 WICHITA, SEDGWICK COUNTY, KANSAS



• = #4 REBAR W/ "BAUGHMAN" CAP (SET)

(M) = MEASURED
 (P) = PLATTED
 (C) = CALCULATED

OWNER:
 RICHARD D. HOSKINSON
 900 N. WESTLAK
 WICHITA, KS 67212-4409
 PH: (316) 722-1885

CONTRACT PURCHASER/DEVELOPER:
 MIDIAN SHRINE TEMPLE
 ATTN: JEFFREY L. SOMMER, C.E.O.
 130 N. TOPSIA
 WICHITA, KS 67202
 PH: (316) 264-2551

LEGAL DESCRIPTION:
 THAT PART OF THE NW 1/4 OF SEC. 15, TWP. 27-S, R-1-W OF THE 6TH P.M., SEDGWICK COUNTY, KANSAS LYING WEST OF AND ADJACENT TO THE EXTENDED WEST LINE OF SPINNAKER COVES - HOSKINSON ADDITION, WICHITA, SEDGWICK COUNTY, KANSAS, AND LYING EAST OF AND ADJACENT TO THE EXTENDED EAST LINE OF COUNTRY ACRES FOURTH "D" ADDITION, AN ADDITION IN SEDGWICK COUNTY, KANSAS, ALL BEING SUBJECT TO ROAD RIGHTS-OF-WAY OF RECORD.

BENCHMARK:
 1/2 MILE EAST OF RIDGE ROAD ON 13TH STREET NORTH, CITY OF WICHITA, DISC. 109.00' N. OF 1/4 SEC. COR. 10.00' W. OF 1/4 SEC. COR. 2.20' S. OF CHAINING FENCE 10.60' W. OF E. OF POWER POLE 83.00' E. OF E. OF NORTH SHORE BLVD. ELEV. = 1425.26 CITY DATUM (1314.78 NAVD83)

RIDGE ROAD & 13TH STREET NORTH CITY OF WICHITA, DISC.
 NE CORNER OF INTERSECTION
 30.00' E. OF E.
 28.00' W. OF E.
 14.00' E. OF BACK OF CURB
 38.00' N. OF BACK OF CURB
 ELEV. = 1425.26 CITY DATUM (1335.25 NAVD83)

RESERVE "A" IS HEREBY RESERVED FOR OPEN SPACE, LAKES, LANDSCAPING, AND ELECTRIC LINES AS CONTAINED IN EASEMENT.

