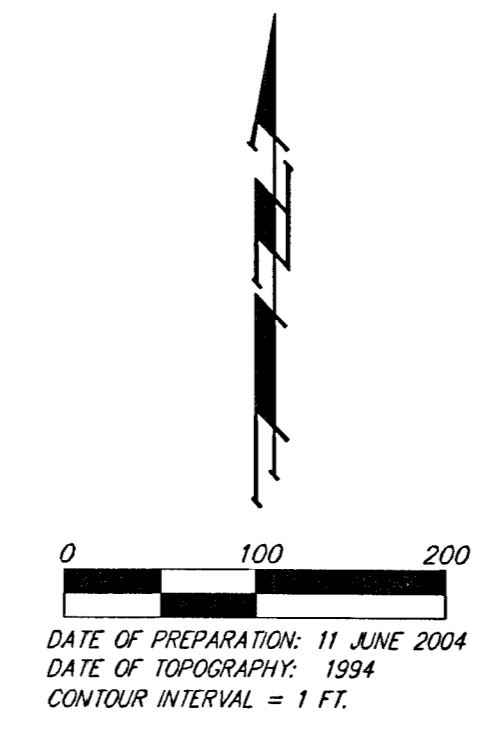
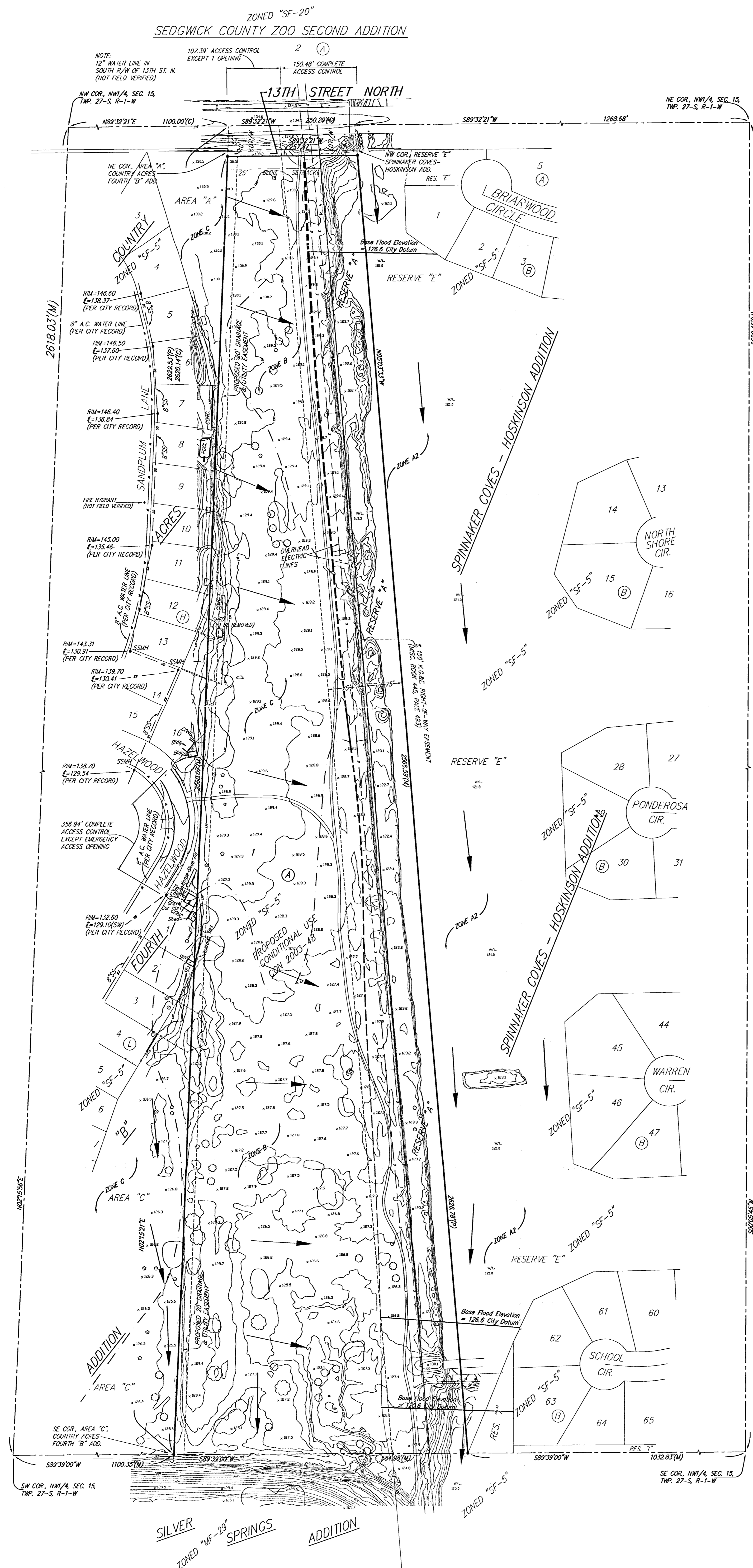


DRAINAGE CONCEPT MIDIAN SHRINE ADDITION WICHITA, SEDGWICK COUNTY, KANSAS



DATE OF PREPARATION: 11 JUNE 2004
DATE OF TOPOGRAPHY: 1994
CONTOUR INTERVAL = 1 FT.

• = #1 REBAR W/ "BAUGHMAN" CAP (SET)

(M) = MEASURED
(P) = PLATTED
(C) = CALCULATED

OWNER:
RICHARD D. HOSKINSON
590 N. WESTLAK
WICHITA, KS 67212-4409
PH. (316) 722-1865

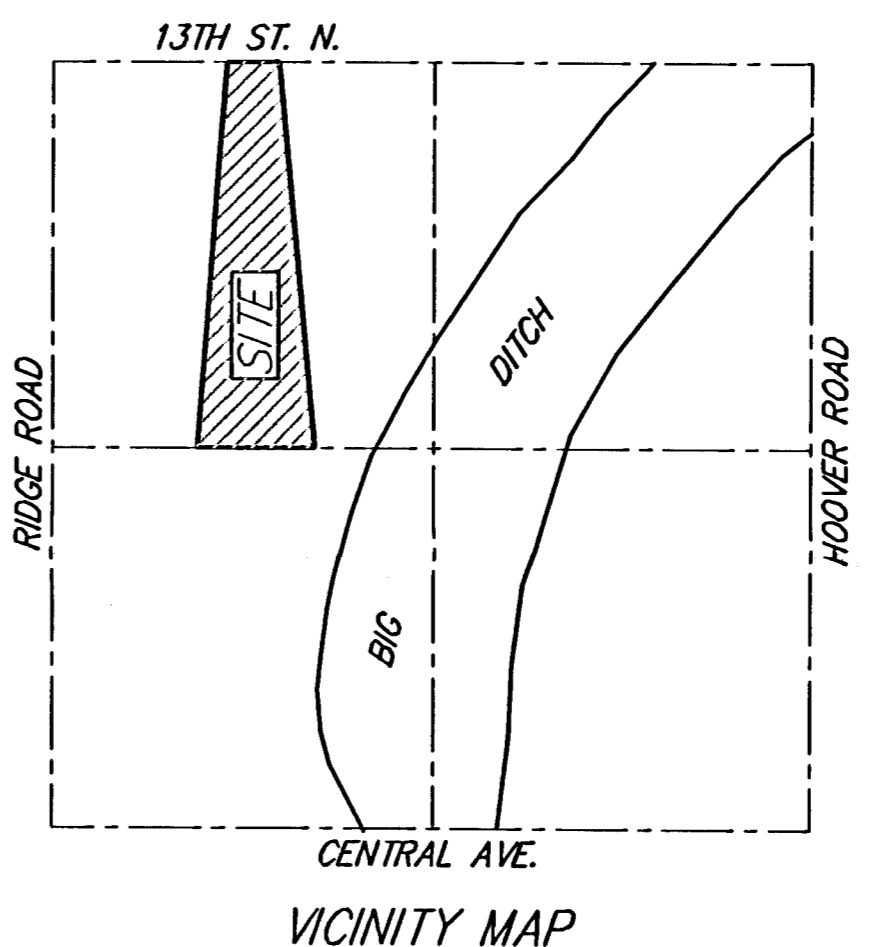
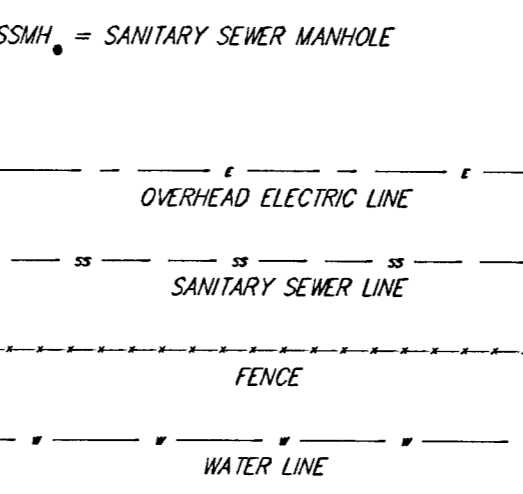
CONTRACT PURCHASER/DEVELOPER:
MIDIAN SHRINE TEMPLE
ATTN: JEFFREY L. SOMMER, C.E.O.
130 N. TOPERA
WICHITA, KS 67202
PH. (316) 264-7551

LEGAL DESCRIPTION:
THAT PART OF THE NW1/4 OF SEC. 15, TWP. 27-S, R-1-W OF THE 6TH P.M., SEDGWICK COUNTY, KANSAS LYING WEST OF AND ADJACENT TO THE EXTENDED WEST LINE OF SPINNAKER COVES - HOSKINSON ADDITION, WICHITA, SEDGWICK COUNTY, KANSAS, AND LYING EAST OF AND ADJACENT TO THE EXTENDED EAST LINE OF COUNTRY ACRES FOURTH 3RD ADDITION, AN ADDITION IN SEDGWICK COUNTY, KANSAS, ALL BEING SUBJECT TO ROAD RIGHTS-OF-WAY OF RECORD.

BENCHMARK:
1/2 MILE EAST OF RIDGE ROAD ON 13TH STREET NORTH, CITY OF WICHITA, DISC. 109.00' N. OF 1/4 SEC. COR. 10.00' W. OF 1/4 SEC. COR. 2.70' S. OF CHAINLINK FENCE 10.00' W. OF E. OF POWER POLE 83.00' E. OF E. OF NORTH SHORE BLVD. ELEV. = 127.38 CITY DATUM (1314.78 NGVD29)

TRIDGE ROAD & 13TH STREET NORTH, CITY OF WICHITA, DISC. NE CORNER OF INTERSECTION 50.00' E. OF E. 95.00' N. OF E. 14.00' E. OF BACK OF CURB 58.00' N. OF BACK OF CURB ELEV. = 147.85 CITY DATUM (1535.25 NGVD29)

RESERVE "A" IS HEREBY RESERVED FOR OPEN SPACE, LAKES, LANDSCAPING AND ELECTRIC LINES AS CONTAINED TO EASEMENT.



Note:
Floodplain information has been based on a scaled location from FEMA FIRM 200328 0020 B. Revised per Letter of Map Revision (LOMR) case # 94-07-268P, effective date October 18, 1999.

Regulatory floodway limits coincide with the Zone A2 Boundary per above LOMR.