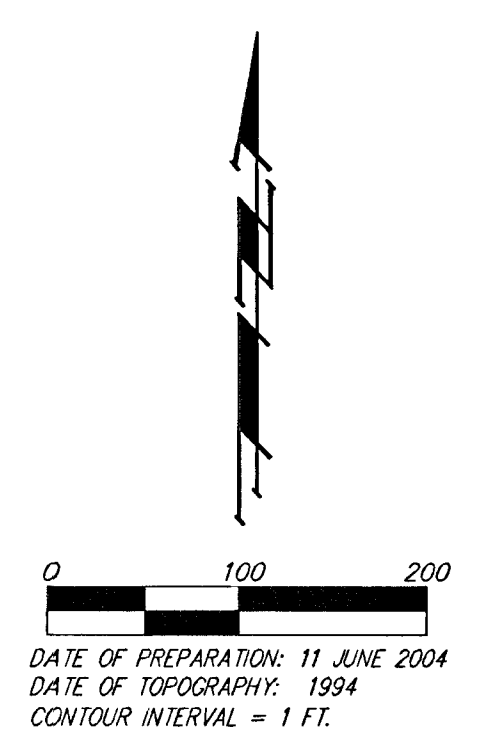
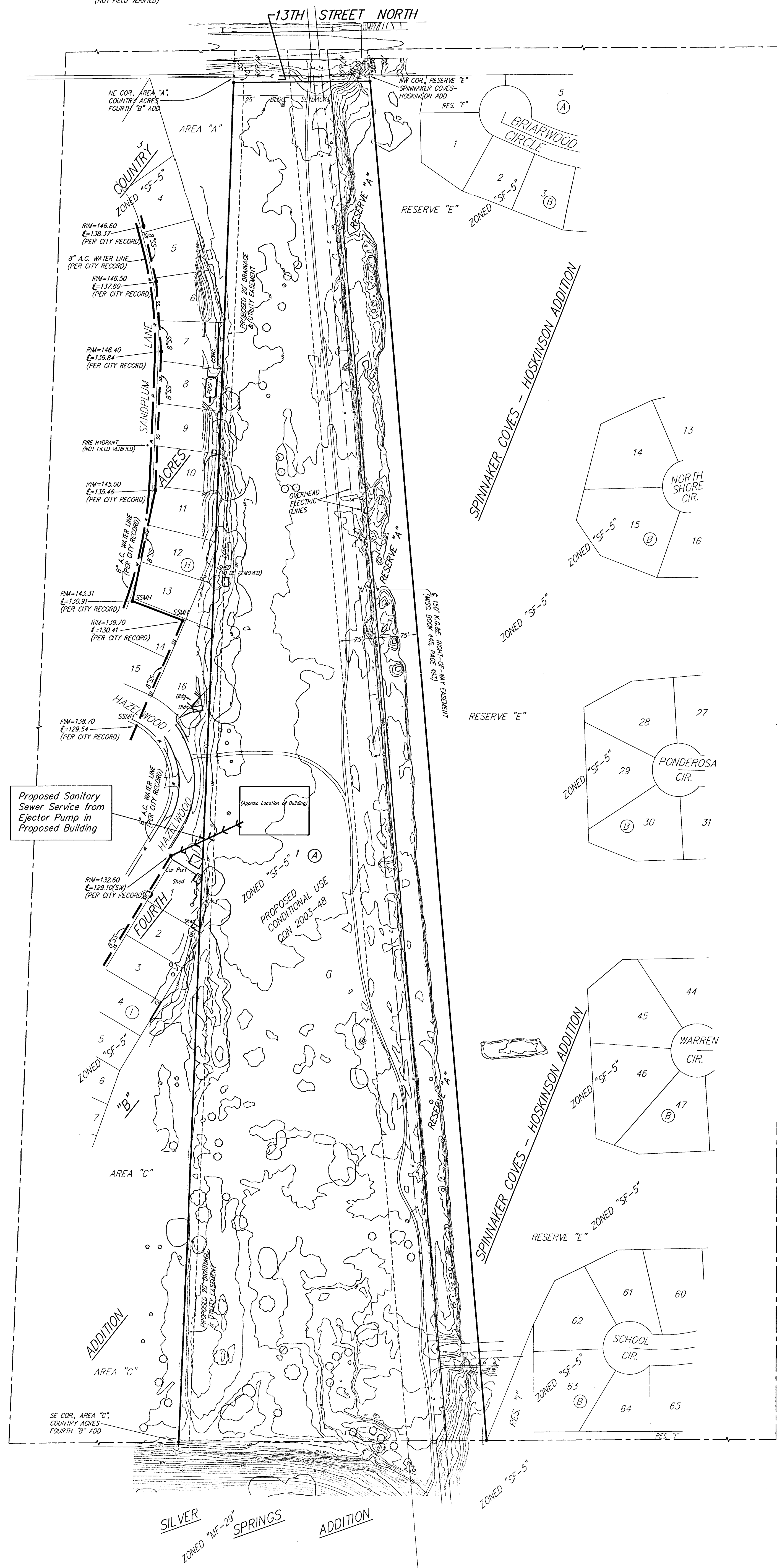


UTILITY PLAN
MIDIAN SHRINE ADDITION
WICHITA, SEDGWICK COUNTY, KANSAS

ZONED "SF-20"
 SEDGWICK COUNTY ZOO SECOND ADDITION

NOTE:
 12" WATER LINE IN
 SOUTH R/W OF 13TH ST. N.
 (NOT FIELD VERIFIED)



DATE OF PREPARATION: 11 JUNE 2004
 DATE OF TOPOGRAPHY: 1994
 CONTOUR INTERVAL = 1 FT.

• = #4 REBAR W/ "BAUGHMAN" CAP (SET)

(M) = MEASURED
 (P) = PLATTED
 (C) = CALCULATED

LEGEND

	Proposed Water Line (8" Unless Noted Otherwise)
	Existing Water Line (8" Unless Noted Otherwise)
	Proposed Sanitary Sewer Line (8" Unless Noted Otherwise)
	Existing Sanitary Sewer Line (8" Unless Noted Otherwise)
	Proposed Sanitary Sewer Manhole
	Proposed Fire Hydrant
	Proposed Sanitary Sewer Flow

BENCHMARK:
 1/2 MILE EAST OF RIDGE ROAD ON 13TH
 STREET NORTH, CITY OF WICHITA DISC.
 100.00' N. OF 1/4 SEC. COR.
 10.00' W. OF 1/4 SEC. COR.
 2.70' S. OF CHAINLINK FENCE
 10.00' W. OF E. OF POWER POLE
 83.00' E. OF N. OF NORTH SHORE & HO.
 ELEV. = 127.38 CITY DATUM
 (1514.78 NGVD29)

RESERVE "A" IS HEREBY RESERVED FOR
 OPEN SPACE, LAWN, LANDSCAPING, AND
 ELECTRIC LINES AS CONTAINED TO EASEMENT.

