

DILLONS 12TH ADDITION

FUTURE PLAT

K-96

N.W. COR. N.W. 1/4
SEC. 15, T27S, R2E

N.E. COR. N.W. 1/4
SEC. 15, T27S, R2E

ROAD

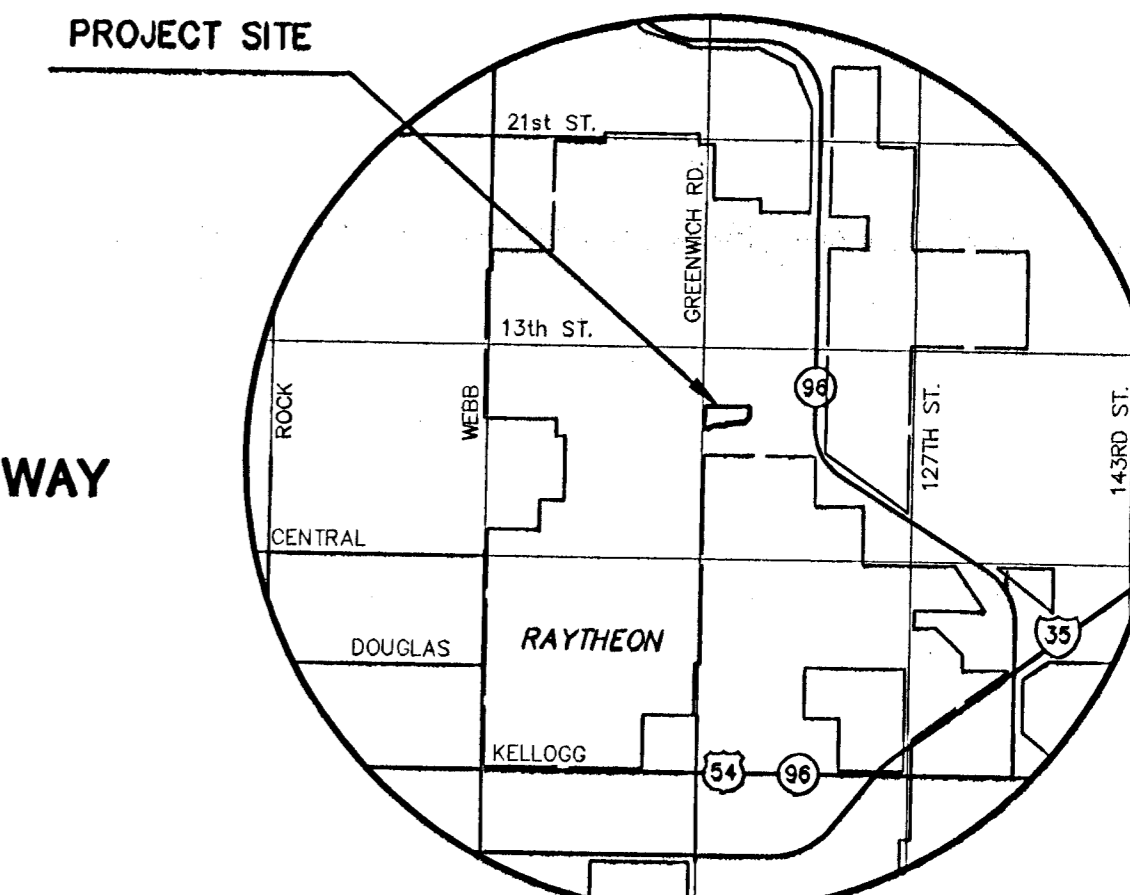
GREENWICH

CL

CHAPEL HILL RD.
(FUTURE)

13TH STREET NORTH

K-96 EXPRESSWAY



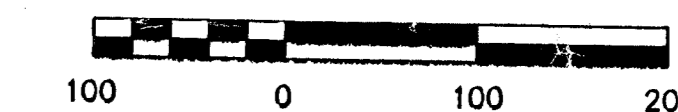
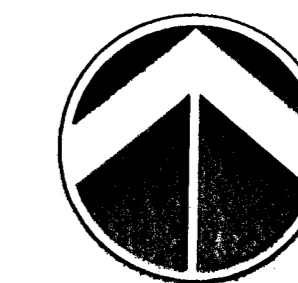
VICINITY MAP

BENCHMARKS

- BM#31 FENCE "T" POST 826' N. & 49' E. OF EAST 1/4 COR. SEC. 16, T27S, R2E
ELEV. = 1389.18
- BM#32 COW BENCHMARK, 44' S. & 101' W. OF NE COR. SEC. 16, T27S, R2E (13TH ST. N. & GREENWICH RD.)
ELEV. = 1385.53 (PUBLISHED 198.13)

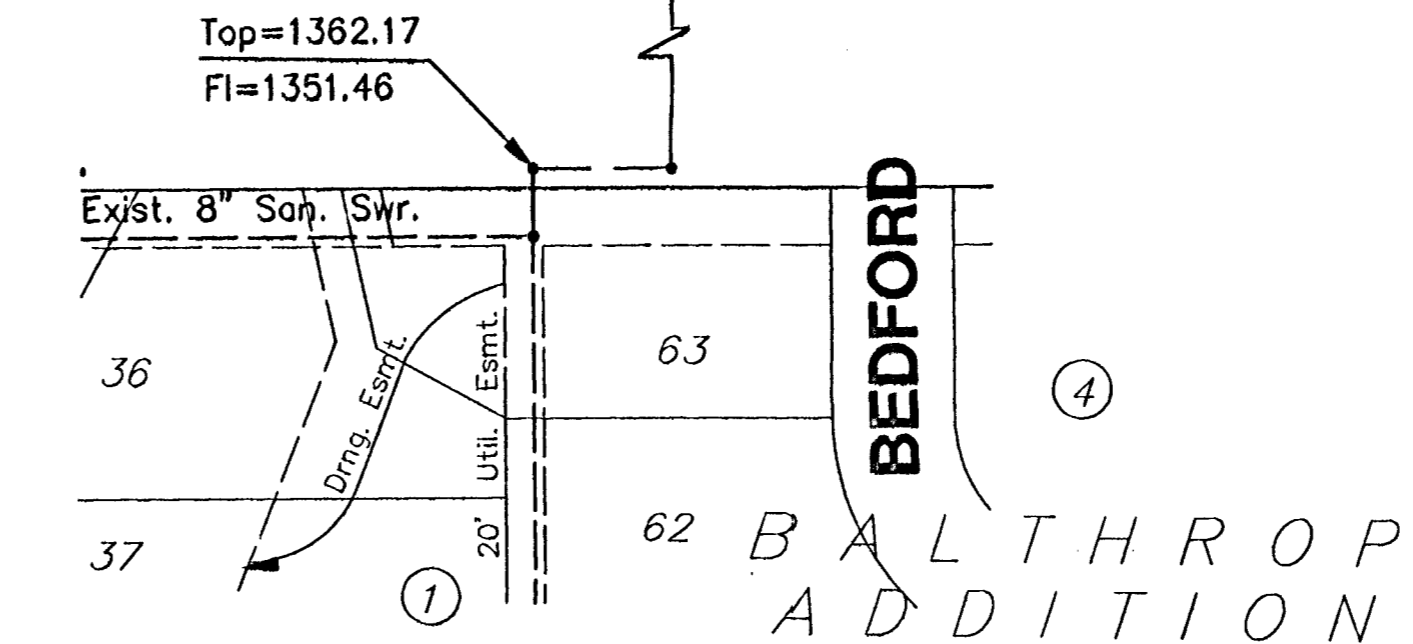
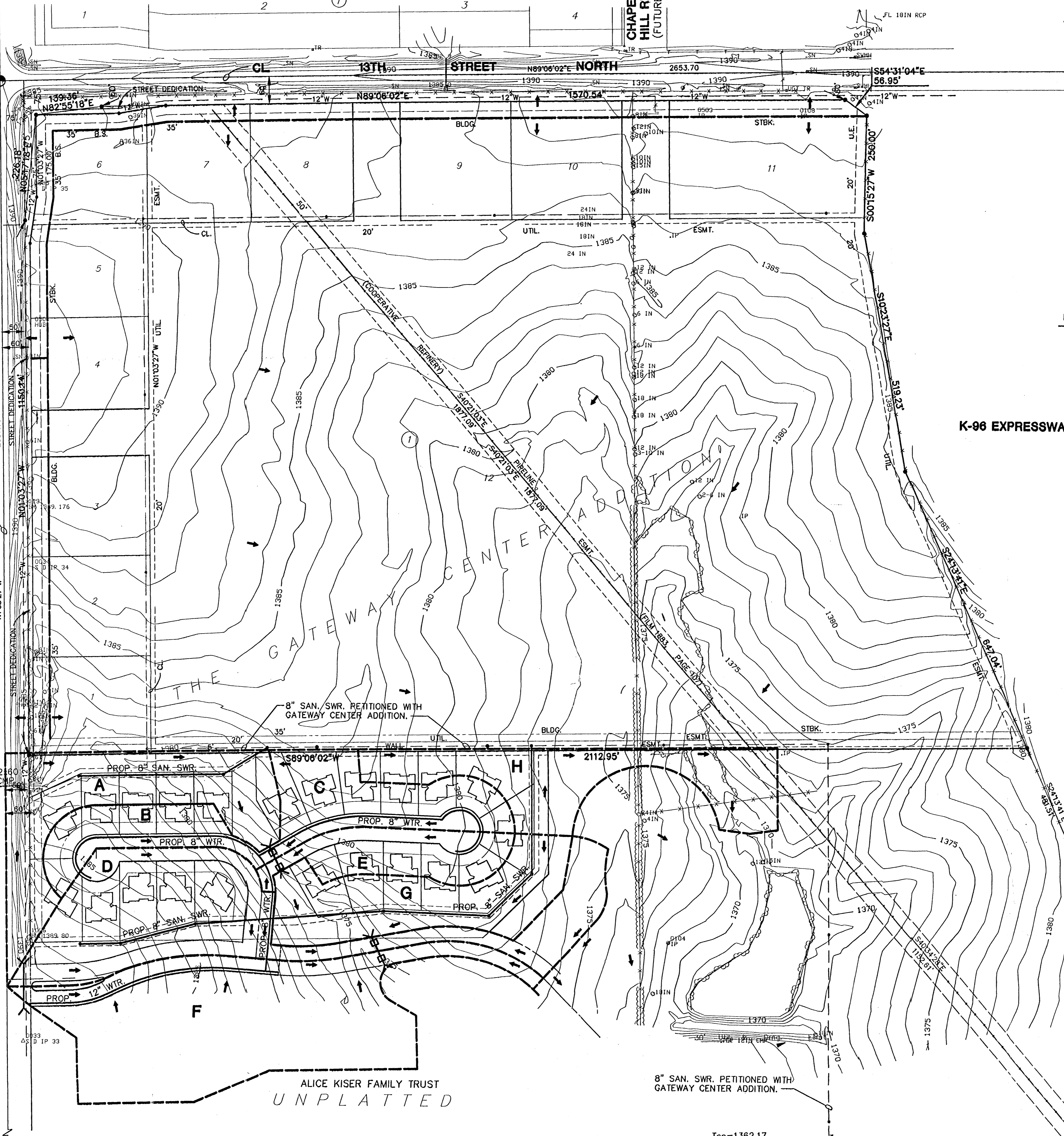
LEGEND

- PLM PIPELINE MARKER
- PP POWER POLE
- BTN TREE
- TR TRANSFORMER
- IP IRON PIN
- X- FENCE



D_a = 29.9ac
Q₂ = 19.6cfs
Q₁₀₀ = 86.7cfs

S.W. COR., N.W. 1/4
SEC. 15, T27S, R2E



DRAINAGE & UTILITY CONCEPT THE KILLENWOOD POINTE ADDITION

OWNERS: WILLARD J. KISER PROPERTIES, L.L.C.
AND KISER GATEWAY, L.L.C. 7765 KILLARNEY PLACE, WICHITA, KS. 67226 (316) 634-0363

DEVELOPERS: GATEWAY PARTNERS L.L.C. c/o RITCHIE ASSOC., INC. 8100 E. 22ND WICHITA, KANSAS 67226 (316) 684-7300
AND LAHAM DEVELOPMENT 150 N. MARKET WICHITA, KANSAS 67202 (316) 262-6412

