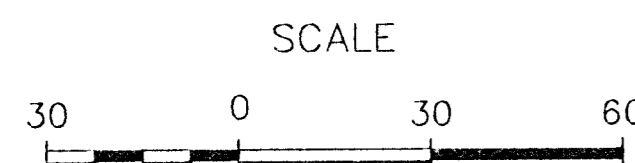
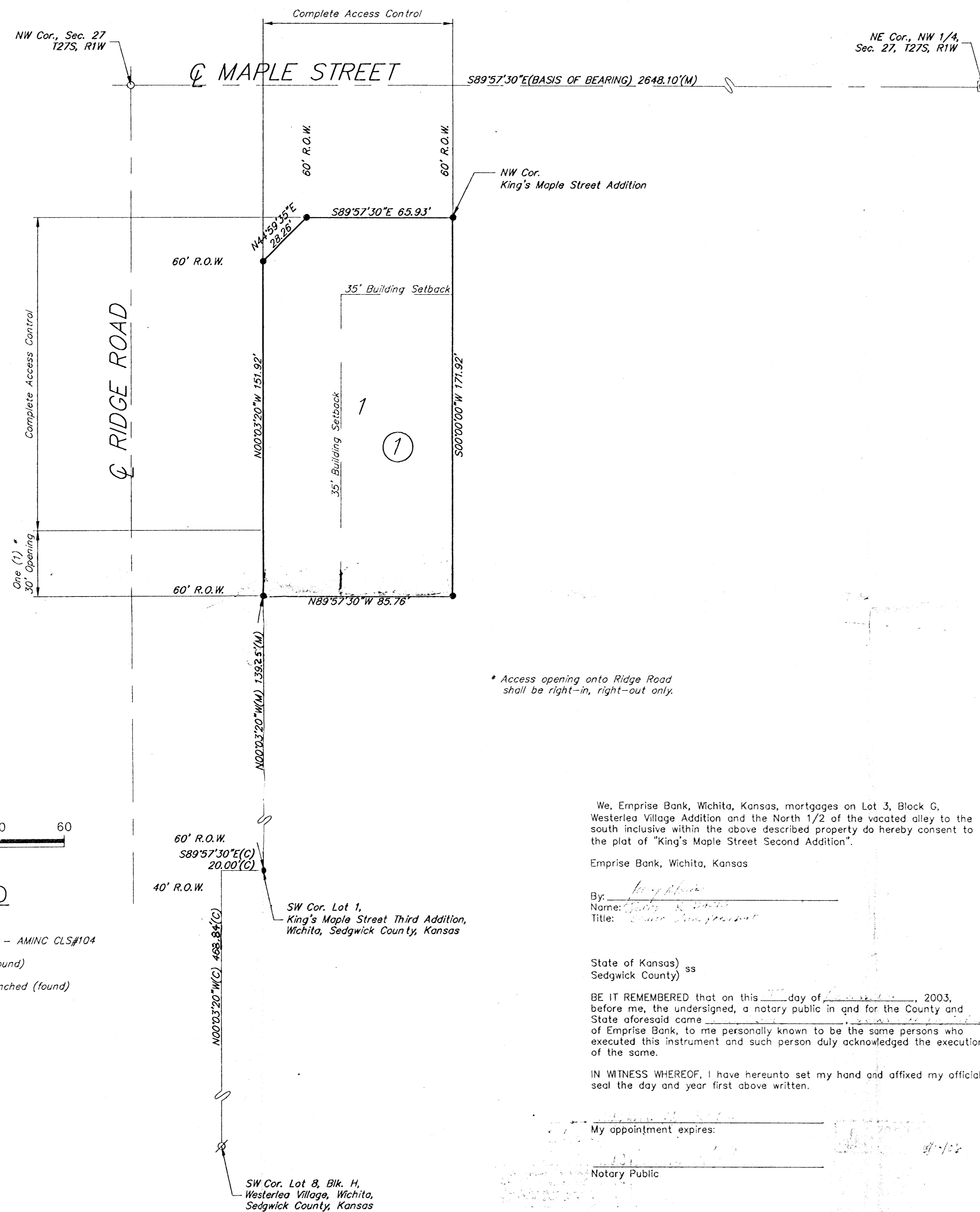


# KING'S MAPLE STREET SECOND ADDITION

## WICHITA, SEDGWICK COUNTY, KANSAS



### LEGEND

- 5/8" Rebar (set) - AMINC CLS#104
- 1/2" Iron pipe (found)
- ⊗ 3/4" Iron pipe pinched (found)
- ⊠ Thimble (found)
- (M) Measured
- (C) Calculated
- R.O.W Right-of-Way

\* Access opening onto Ridge Road shall be right-in, right-out only.

State of Kansas) ss  
Sedgwick County)

I, the undersigned licensed land surveyor in aforesaid county and state, do hereby certify that, under the supervision of the undersigned, we, AM Consulting, Inc., have surveyed and platted "KING'S MAPLE STREET SECOND ADDITION", Wichita, Sedgwick County, Kansas and that the accompanying plat is a true and correct exhibit of the property surveyed, described as follows:

Lot 3, Block G, Westerlea Village, Sedgwick County, Kansas and the North 1/2 of the vacated alley to the south. All being situated in the Northwest 1/4, Section 27, Township 27 South, Range 1 West, of the 6th Principal Meridian, Sedgwick County, Kansas.

Existing public dedications, rights-of-way, and easements being vacated by virtue of K.S.A. 12-512(b).

State of Kansas) ss  
Sedgwick County)

This plat of "KING'S MAPLE STREET SECOND ADDITION", Wichita, Sedgwick County, Kansas has been submitted to and approved by the Wichita/Sedgwick County Metropolitan Area Planning Commission, Wichita, Kansas.

Dated this \_\_\_ day of \_\_\_\_\_, 2003.  
Wichita/Sedgwick County Metropolitan Area Planning Commission.

*Ronald L. Marshall* Chairman  
Ronald L. Marshall  
*John L. Schlegel* Secretary  
John L. Schlegel

Entered on transfer record this \_\_\_ day of \_\_\_\_\_, 2003.

\_\_\_\_\_, County Clerk  
Don Brace

State of Kansas) ss  
Sedgwick County)

This is to certify that this instrument was filed for record in the Register of Deeds office at \_\_\_ o'clock \_\_\_ .m., on the \_\_\_ day of \_\_\_\_\_, 2003, and is duly recorded.

\_\_\_\_\_, Register of Deeds  
Bill Meek

\_\_\_\_\_, Deputy  
Linda Kizzire



\_\_\_\_\_, Surveyor  
Randall L. Elkins, L.S. # 1294

State of Kansas) ss  
Sedgwick County)

Know all men by these presents that we, the undersigned, have caused the land described in the surveyor's certificate to be platted into a Lot and a Block, to be known as "KING'S MAPLE STREET SECOND ADDITION", Wichita, Sedgwick County, Kansas. The utility easements are hereby granted as indicated for constructing, maintaining, operating, and repairing utilities. The access controls are hereby granted to the appropriate governing body as shown hereon. Right-of-way dedications as shown hereon are for the benefit of the public.

A drainage plan has been developed for the plat. All drainage easements and/or right-of-ways shall remain at established grades, or as modified with the approval of the applicable public agency, and unobstructed to allow for the conveyance of stormwater.

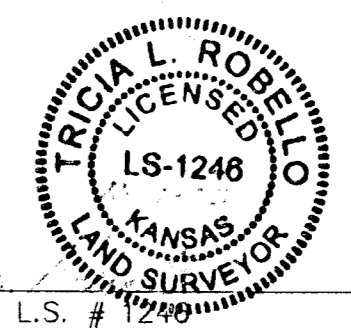
*William R. King* 12/17/03  
William R. King, Member  
Maple and Ridge, L.L.C. Date

State of Kansas) ss  
Sedgwick County)

BE IT REMEMBERED that on this 17<sup>th</sup> day of December, 2003, before me, the undersigned, a notary public in and for the County and State aforesaid came William R. King, Member, Maple and Ridge, L.L.C., personally known to me to be the same person who executed this instrument and such person duly acknowledged the execution of the same.

IN WITNESS WHEREOF, I have hereunto set my hand and affixed my official seal the day and year first above written.

*Tricia L. Robello*  
Notary Public  
My appointment expires: *October 11, 2005*



\_\_\_\_\_, Deputy County Surveyor  
Tricia L. Robello, L.S. # 1248  
Sedgwick County, Kansas

We, Emprise Bank, Wichita, Kansas, mortgages on Lot 3, Block G, Westerlea Village Addition and the North 1/2 of the vacated alley to the south inclusive within the above described property do hereby consent to the plat of "King's Maple Street Second Addition".

Emprise Bank, Wichita, Kansas

By: \_\_\_\_\_  
Name: \_\_\_\_\_  
Title: \_\_\_\_\_

State of Kansas) ss  
Sedgwick County)

BE IT REMEMBERED that on this \_\_\_ day of \_\_\_\_\_, 2003, before me, the undersigned, a notary public in and for the County and State aforesaid came \_\_\_\_\_ of Emprise Bank, to me personally known to be the same persons who executed this instrument and such person duly acknowledged the execution of the same.

IN WITNESS WHEREOF, I have hereunto set my hand and affixed my official seal the day and year first above written.

My appointment expires: \_\_\_\_\_

\_\_\_\_\_, Notary Public

State of Kansas) ss  
City of Wichita ) ss

This plat approved and all dedications shown hereon accepted by the City Council of the City of Wichita, Kansas, this \_\_\_ day of \_\_\_\_\_, 2003. At the Direction of the City Council.

\_\_\_\_\_, Mayor  
Carlos Mayans

\_\_\_\_\_, City Clerk  
Karen Schotfield

Entered on transfer record this \_\_\_ day of \_\_\_\_\_, 2003.

\_\_\_\_\_, County Clerk  
Don Brace

**AM CONSULTING** Inc.  
ENGINEERING SERVICES  
142 N. Emporia Wichita, KS 67202  
316/265-2870 fax: 316/265-2839