

FINAL PLAT

KISER WEST ADDITION

AN ADDITION TO WICHITA SEDGWICK COUNTY, KANSAS

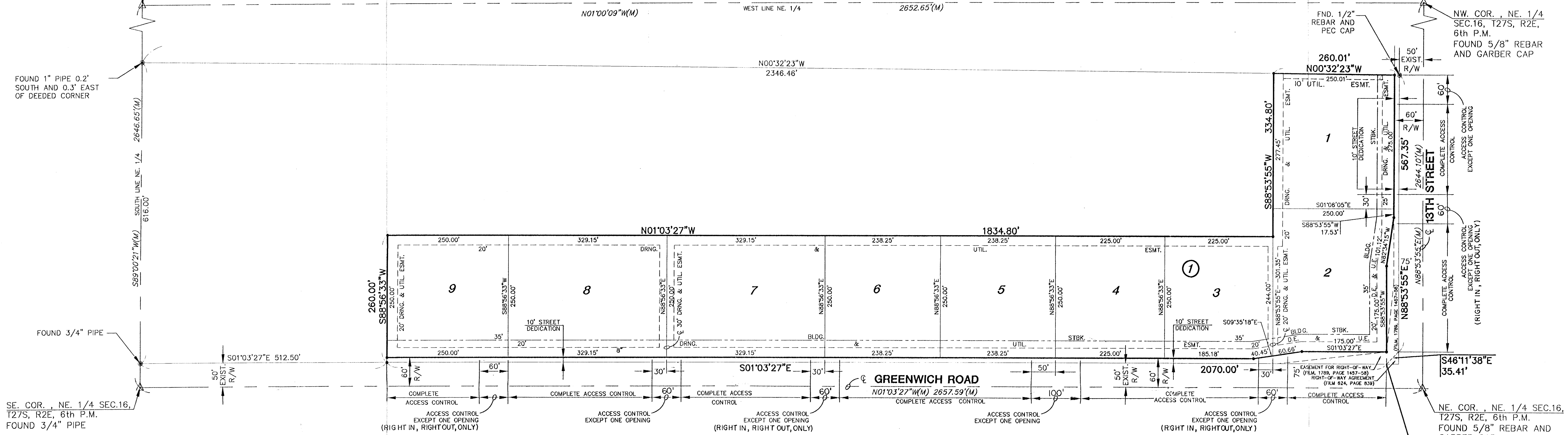
SW. COR., NE. 1/4 SEC.16,
T27S, R2E, 6th P.M.
FOUND CENTER OF SECTION
STONE

NW. COR., NE. 1/4
SEC.16, T27S, R2E,
6th P.M.
FOUND 5/8" REBAR
AND GARBER CAP

FOUND 1" PIPE 0.2'
SOUTH AND 0.3' EAST
OF DEEDED CORNER

FOUND 3/4" PIPE

SE. COR., NE. 1/4 SEC.16,
T27S, R2E, 6th P.M.
FOUND 3/4" PIPE



I, Gregory J. Allison, a Registered Land Surveyor in Kansas, do hereby certify that I have been in responsible charge of surveying and platting of "KISER WEST ADDITION", an addition to Wichita, Sedgwick County, Kansas, into Lots, and a Block, the same being accurately set forth in the accompanying plat and described herein:

A tract of land lying in the Northeast Quarter, Section 16, Township 27 South, Range 2 East of the 6th Principal Meridian, Wichita, Sedgwick County, Kansas, more particularly described as follows:

Beginning at a point 75.00 feet South of the North line of said Northeast Quarter and 50.00 feet West of the East line of said Northeast Quarter; thence on a Kansas South-Zone Grid bearing of S01°03'27"E, 2070.00 feet parallel with the East line of said Northeast Quarter; thence S88°56'33"W, 260.00 feet; thence N01°03'27"W, 1834.80 feet; thence S88°53'55"W, 334.80 feet; thence N00°32'23"W, 260.01 feet to a point 50.00 feet South of said North line; thence N88°53'55"E, 567.35 feet to a point 75.10 feet West of said East line; thence S46°11'38"E, 35.41 feet along a Right Of Way Agreement set forth on Film 624, Page 839 to the point-of-beginning.

I hereby certify that the details of this plat are correct to the best of my knowledge and belief this 9th day of November, 2001.

Gregory J. Allison

 Gregory J. Allison,
 MKEC Engineering Consultants, Inc.
 411 North Webb Road
 Wichita, Kansas 67206

Know all men by these presents that we the undersigned property owners of the land above set forth in the Registered Land Surveyor's Certificate, have caused the same to be surveyed and platted into Lots, and a Block, the same to be known as "KISER WEST ADDITION", an addition to Wichita, Sedgwick County, Kansas. Easements for the construction and maintenance of public utilities, and drainage, as indicated on the accompanying plat are hereby granted. The streets are hereby dedicated to and for the use of the public. A drainage plan has been developed for this plat and all drainage easements, right-of-way, or reserves shall remain at established grades or as modified with the approval of the applicable City or County Engineer, and unobstructed to allow for the conveyance of storm water. All abutters right of access to or from 13th Street East over and across the North line of "KISER WEST ADDITION", are hereby granted to the appropriate governing body, as indicated on the face of the plat. All abutters right of access to or from North Greenwich Road over and across the East line of "KISER WEST ADDITION", are hereby granted to the the appropriate governing body, as indicated on the face of the plat. This plat is subject to the conditions of the Kiser West Community Unit Plan (CUP 2000-21, DP - 254).

Kiser Inc., a Kansas Corporation

A. Dwayne Brodelle
 A. Dwayne Brodelle, President

STATE OF KANSAS)
) ss.
 SEDGWICK COUNTY)

BE IT REMEMBERED, that on this 15th day of November 2001, before me the undersigned, a Notary Public in and for the County and State aforesaid, came A. Dwayne Brodelle, President to me personally known to be the same person who executed the foregoing instrument of writing and duly acknowledged the execution of the same.

IN WITNESS WHEREOF, I have hereunto set my hand and affixed my official seal, the day and year last above written.

Krista L. Peterson, Notary Public
 Krista L. Peterson
 Notary Public
 My appointment expires:

This plat of "KISER WEST ADDITION", has been submitted to and approved by the Wichita-Sedgwick County Metropolitan Area Planning Commission, Wichita, Kansas.
 Dated this 9th day of August 2001.

WICHITA-SEDGWICK COUNTY METROPOLITAN PLANNING COMMISSION

_____, Acting Chair
 J. D. Michaelis, Acting Chair

_____, Secretary
 Marvin S. Krout, Secretary

This plat approved and all dedications shown thereon, if any, accepted by the City Council of the City of Wichita, Kansas, this ___ day of _____, 2001.

At the Direction of the City Council

_____, City Manager
 Chris Cherches, City Manager

_____, City Clerk
 Pat Burnett, City Clerk

Entered on transfer record this ___ day of _____, 2001.

_____, County Clerk
 Don Brace, County Clerk

STATE OF KANSAS)
) ss.
 SEDGWICK COUNTY)

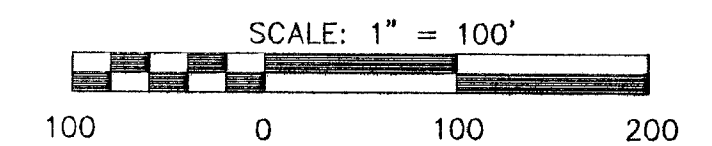
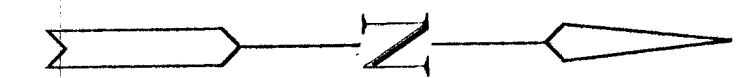
This is to certify that this instrument was filed for record in the Register of Deeds office this ___ day of _____, 2001, at _____ o'clock ___M; and is duly recorded.

_____, Register of Deeds
 Bill Meek, Register of Deeds

_____, Deputy
 Linda Kizzire, Deputy

Reviewed in accordance with K.S.A. 58-2005 on this 6th day of November, 2001.

Tricia L. Robello, Deputy County Surveyor
 Tricia L. Robello, LS #1246
 Deputy County Surveyor
 Sedgwick County, Kansas



LEGEND

- = FOUND 1/2" REBAR AND PEC CAP
- = SET 5/8" REBAR/MKEC CLS 39
- △ = FOUND SECTION CORNER MONUMENT
- (M) = MEASURED DIMENSION
- U.E. = UTILITY EASEMENT
- D.E. = DRAINAGE EASEMENT