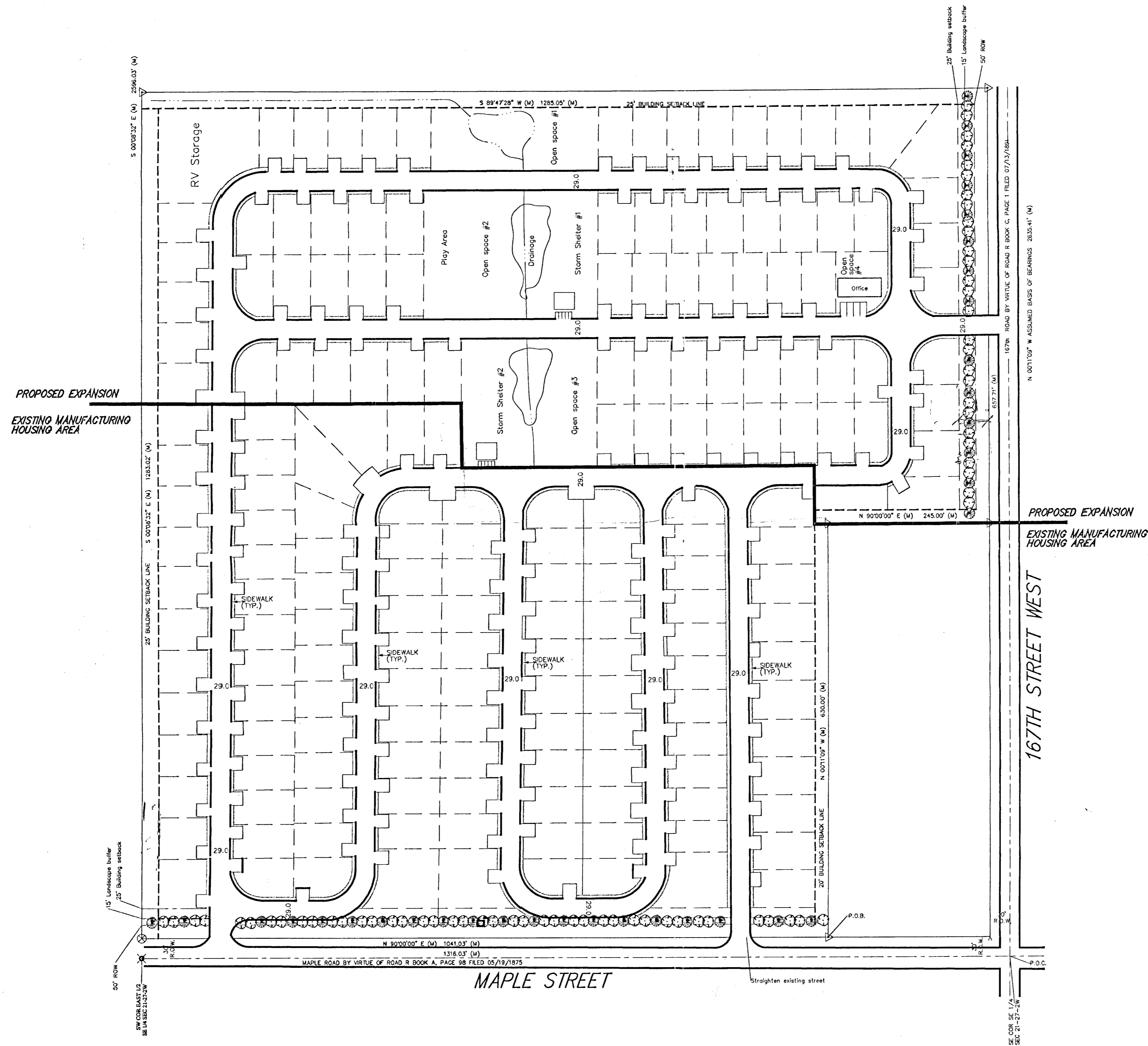
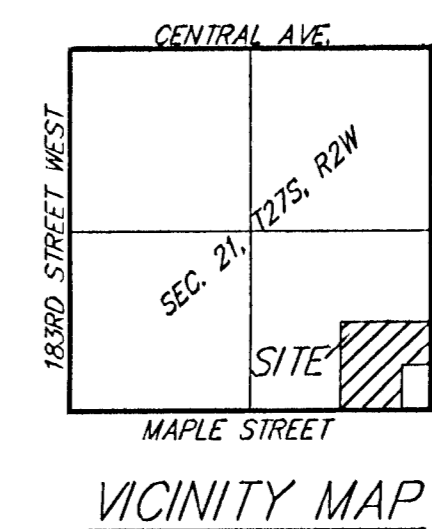


17000 MAPLE GODDARD, KANSAS La Del Manor Mobile Home Park



Home Count:

Existing	100
New	82
Total	182



Notes:

- Front yard setback: 5'
- Side yard setback: 10'
- Rear yard: 10'
- Minimum lot area: 5,000 sq. ft.
- Two off-street parking areas
- Parking pad \square 20' x 20' typ.
- Storm shelter 10 square foot per home site distance from home site to storm shelter not to exceed 1320 lineal feet.
- Open space must equal 8% of total area.

Open Space:

- Total Area - 1,497,954.3 sq. ft. - 34.6 Acres
- Open space #1 - 24,601 sq. ft. (1.6%)
- Open space #2 - 51,957 sq. ft. (3.5%)
- Open space #3 - 40,551 sq. ft. (2.7%)
- Open space #4 - 6,350 sq. ft. (.42%)
- Required Open Space - 123,459 sq. ft. - 2.6 Acres (8.2%)
- Buffer space - 143,257 sq. ft. (9.6%)
- Total Open Space - 266,716 sq. ft. - 5.9 Acres (17%)

Plant List - Landscape Buffer

Symbol	Common Name	Scientific Name	Size	Quantity
(circle with dot)	Schunard Oak	Quercus shumardii	2" dia	69
(circle with cross)	Eastern Red Cedar	Juniperus virginiana	2" dia	33

Storm Shelter's:

- Total home sites: 184 X 10 sq. ft. = 1,840 sq. ft.
- Storm shelter #1 = 920 sq. ft.
- Storm shelter #2 = 920 sq. ft.

Road detail:

Scale: no scale

