



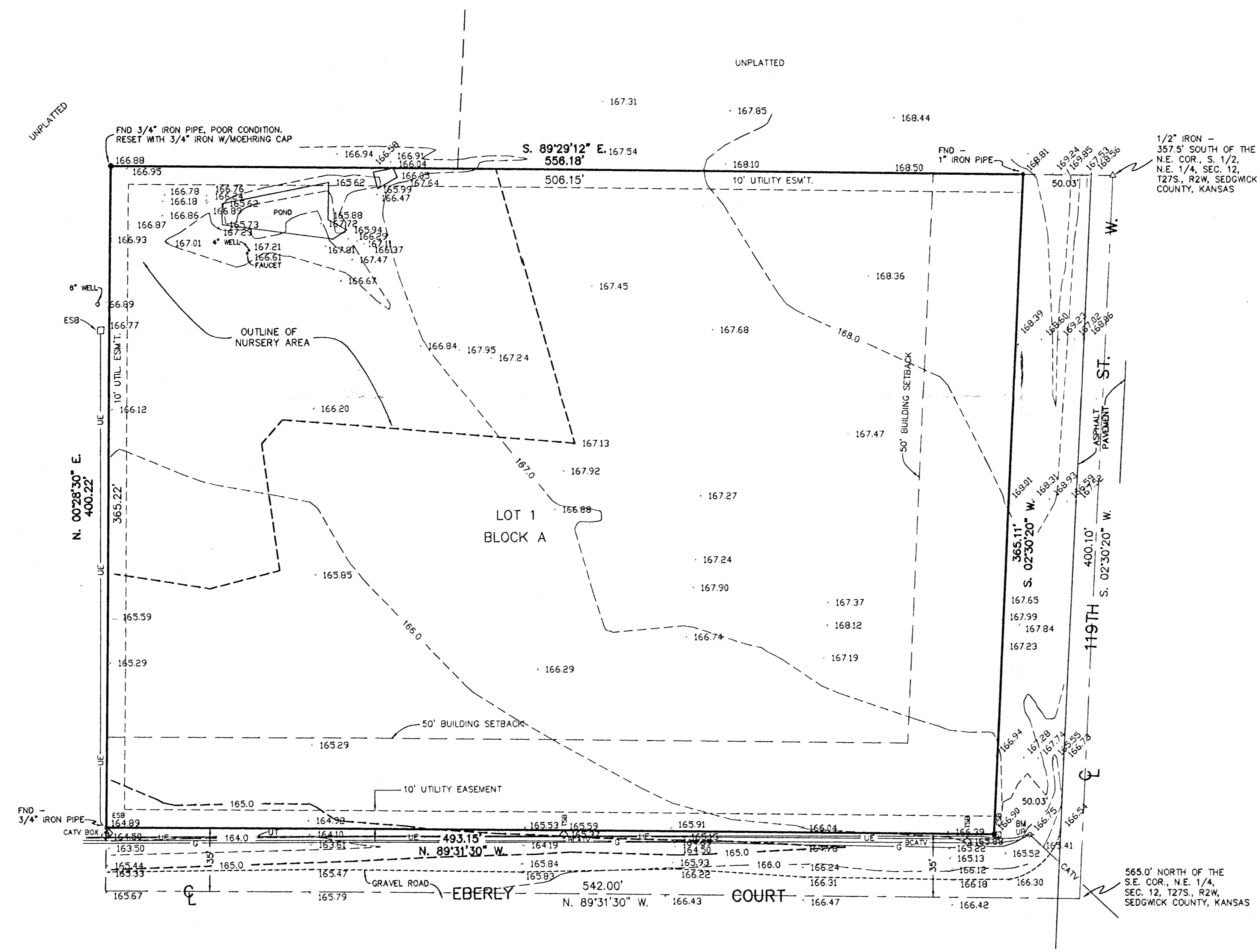
1" = 40'
#03-011-SD

SURVEY DATE: MARCH 7, 2003

PRELIMINARY PLAT of LAUREL'S ACRES An Addition to Wichita, Sedgwick County, Kansas

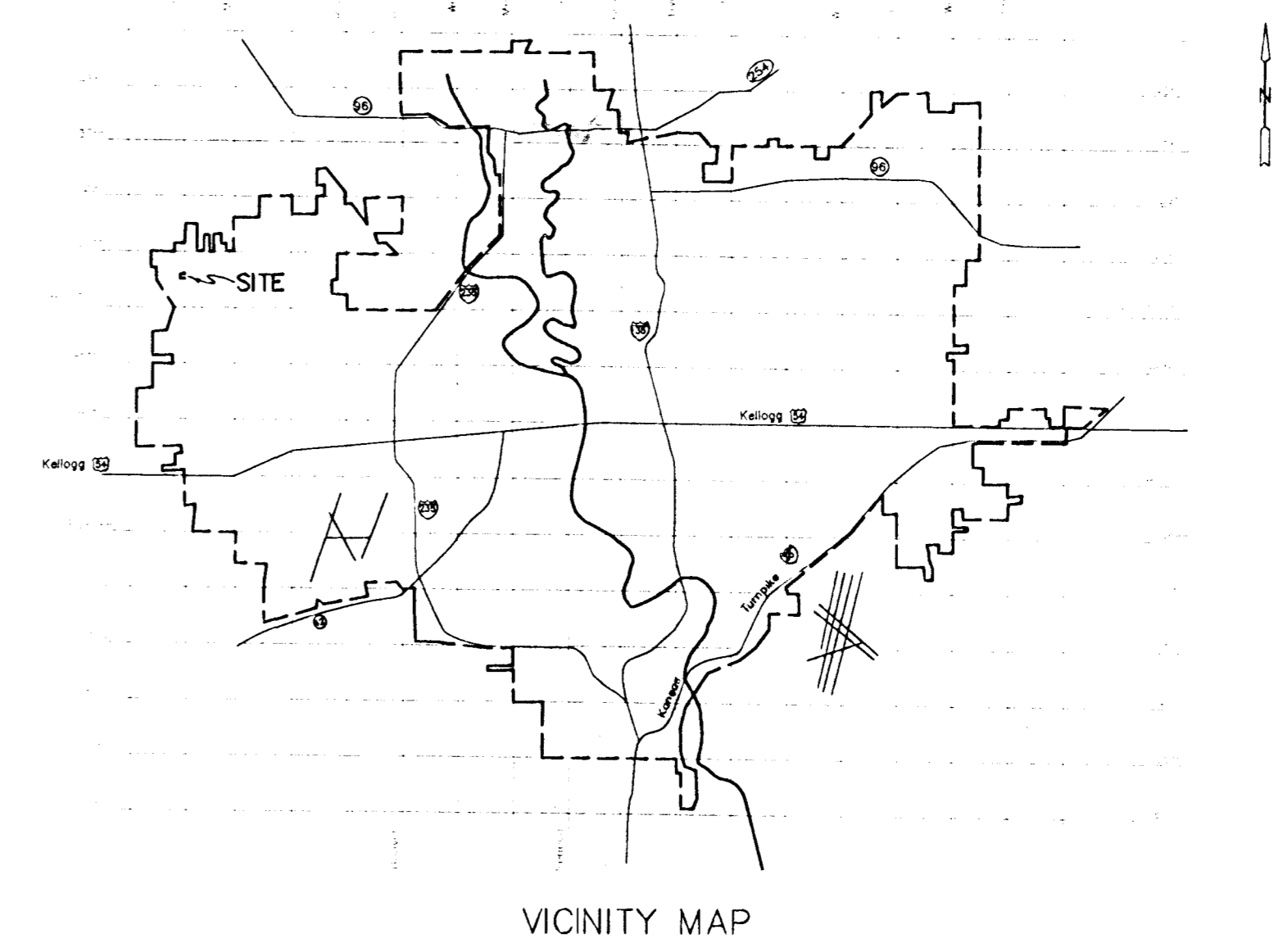
LEGAL DESCRIPTION

BEGINNING AT A POINT IN THE EAST LINE AND 565.0 FEET NORTH OF THE SOUTHEAST CORNER OF THE N.E. 1/4 OF SECTION 12, TOWNSHIP 27 SOUTH, RANGE 2 WEST OF THE 6TH P.M., SEDGWICK COUNTY, KANSAS; THENCE NORTH 89 DEGREES 31' 30" WEST, PARALLEL WITH THE SOUTH LINE OF SAID N.E. 1/4, A DISTANCE OF 542.00 FEET; THENCE NORTH 00 DEGREES 28' 30" EAST, A DISTANCE OF 400.22 FEET; THENCE SOUTH 89 DEGREES 29' 12" EAST, PARALLEL WITH THE NORTH LINE OF THE S. 1/2 OF SAID N.E. 1/4, A DISTANCE OF 556.18 FEET TO A POINT IN THE EAST LINE OF SAID N.E. 1/4; THENCE SOUTH 02 DEGREES 30' 20" WEST, A DISTANCE OF 400.10 FEET TO THE POINT OF BEGINNING.



LEGEND

- G = GAS MAIN
- UP = UTILITY POLE
- UE = UNDERGROUND ELECTRIC
- UT = UNDERGROUND TELEPHONE
- BCATV = BURIED CABLE TELEVISION
- ESB = ELECTRIC SWITCH BOX
- TSB = TELEPHONE SPLICE BOX



BENCHMARK

CITY OF WICHITA BENCHMARK DISK, 29.6' WEST OF THE CL 119TH ST. W. AND 1.0' SOUTH OF CL 17TH ST. N. EXTENDED. ELEV. = 164.99 CITY DATUM.

60d NAIL IN WEST FACE OF UTILITY POLE NEAR S.E. PROPERTY CORNER. ELEV. = 167.08 CITY DATUM



MOEHRING & ASSOCIATES
CONSULTING ENGINEERS
433 S. HYDRAULIC
WICHITA, KS.
263-8291

C:\SEC2000\WORK\JONESPRE.DWG