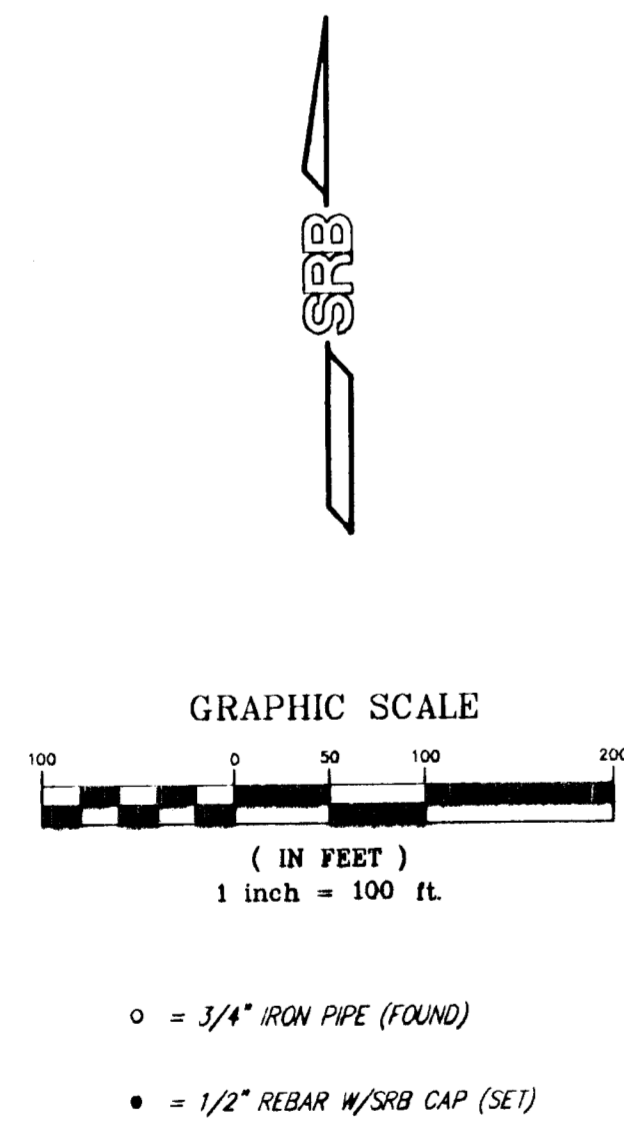
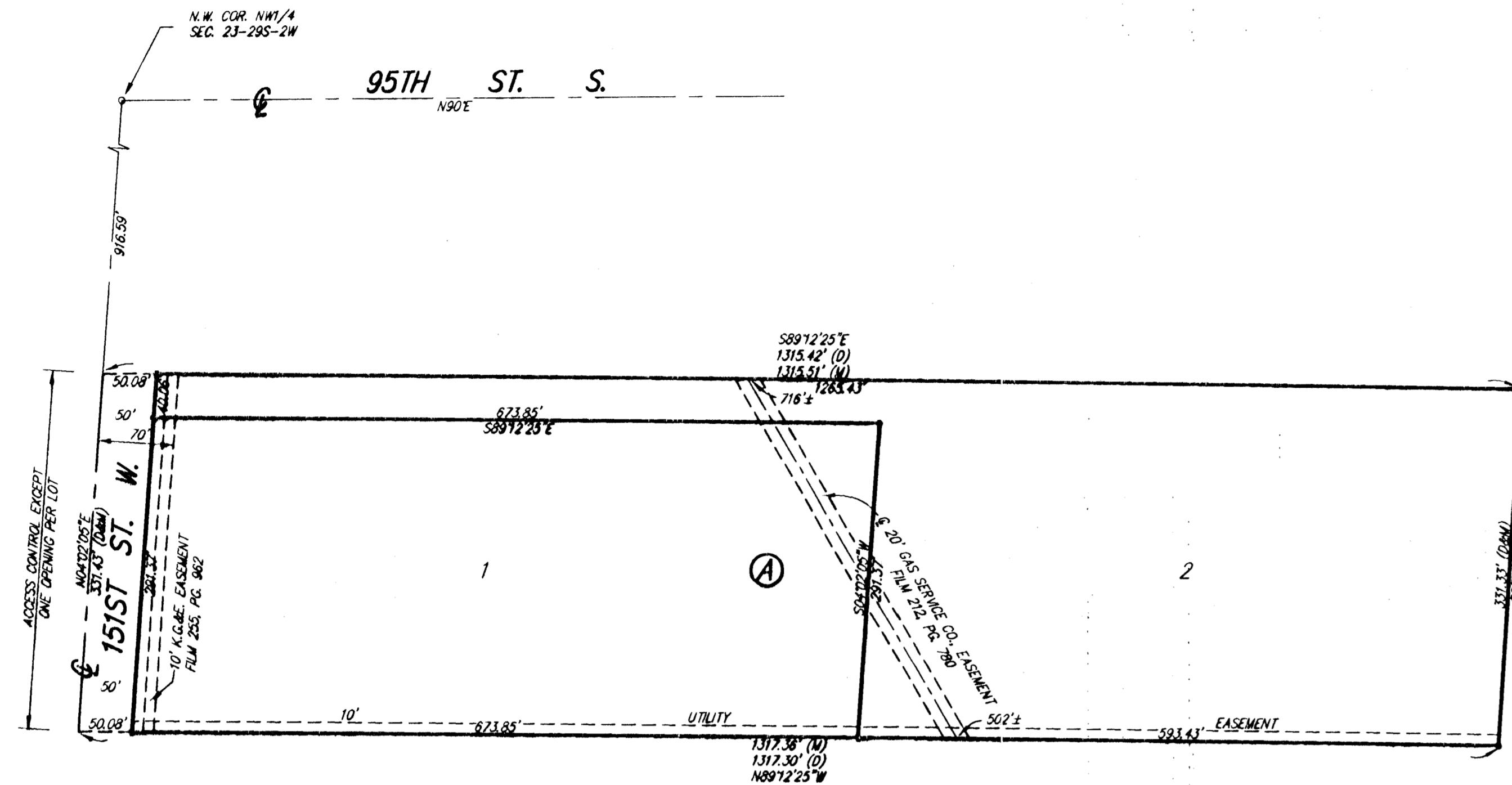


LAWRENZ ADDITION

SEDGWICK COUNTY, KANSAS



State of Kansas) SS
Sedgwick County)

We, Savoy, Ruggles & Bohm, P.A., Surveyors in aforesaid county and state do hereby certify that, under the supervision of the undersigned, we have surveyed and platted "LAWRENZ ADDITION", Sedgwick County, Kansas and that the accompanying plat is a true and correct exhibit of the property surveyed, described as follows:

That part of the NW1/4 of Sec. 23, Twp. 29-S, R-2-W of the 6th P.M., Sedgwick County, Kansas described as beginning at a point on the west line of said NW1/4, being 916.59 feet south of the N.W. Corner thereof; thence S89°12'25"E, 1315.42 feet to the east line of the west half of said NW1/4; thence S03°42'57"W, 331.33 feet on the east line of the west half of said NW1/4; thence N89°12'25"W, 1317.30 feet to the west line of said NW1/4; thence N04°02'05"E, 331.43 feet to the point of beginning.

Savoy, Ruggles & Bohm, P.A.

Date 3 April 2000
Mark A. Savoy, RLS #788, Surveyor

Know all men by these presents that we, the undersigned, have caused the land described in the surveyors certificate to be platted into Lots, a Block and Street to be known as "LAWRENZ ADDITION", Sedgwick County, Kansas. The Street is hereby dedicated to and for the use of the public. The utility easements are hereby granted as indicated for the construction and maintenance of all public utilities. All abutters rights of access to or from 151st Street West over and across the west line of Lots 1 and 2 are hereby granted to the appropriate governing body, provided however, that Lots 1 and 2 shall have access to 151st Street West at one location each as shall be determined by the Engineer of the appropriate governing body. A drainage plan has been developed for this plat and all drainage easements, and rights-of-way shall remain at established grades or as modified with the approval of the City Engineer, and unobstructed to allow for the conveyance of stormwater.

Donald Lawrenz, LaDonna Lawrenz

State of Kansas) SS
Sedgwick County)

The foregoing instrument acknowledged before me, this 29th day of April, 2000, by Donald Lawrenz and LaDonna Lawrenz, Husband and Wife.

My App't. Exp. 5-17-2003



We, the undersigned, holders of a mortgage on the above described property do hereby consent to this plat of "LAWRENZ ADDITION", Sedgwick County, Kansas.

Capitol Federal Savings and Loan Association

in Mark Gleason, VP
Mark Gleason

This plat of "LAWRENZ ADDITION", Sedgwick County, Kansas, has been submitted to and approved by the Wichita-Sedgwick County Metropolitan Area Planning Commission, Wichita, Kansas.

Dated this day of , 1999.

Wichita-Sedgwick County Metropolitan Area Planning Commission

Francis S. Corafalo, Chairman

Marvin S. Krout, Secretary

State of Kansas) SS
Sedgwick County)

This plat approved and all dedications shown hereon, are hereby accepted by the Board of County Commissioners, Sedgwick County, Kansas, on , 2000.

Bill Hancock, Chairman

James Alford, County Clerk

Entered on transfer record this day of , 2000.

James Alford, County Clerk

Reviewed in accordance with K.S.A. 58-2005 on this day of , 2000.

Donald Lawrenz, LaDonna Lawrenz

Tricia L. Robello, LS #1246, Deputy County Surveyor Sedgwick County Kansas

State of Kansas) SS
Sedgwick County)

This is to certify that this plat has been filed for record in the office of the Register of Deeds, this day of , 2000, at o'clock M. and is duly recorded.

Bill Meek, Register of Deeds

Linda Kizzire, Deputy

State of Kansas) SS
Sedgwick County)

The foregoing instrument acknowledged before me, this 30 day of April, 2000, by MARK GLEASON, of Capitol Federal Savings and Loan Association, on behalf of the Association.

My App't. Exp. 1-24-02



DWG FILE: 01516PF-R.C.
PROJECT NO. 99301516P

SRB 924 NORTH MAIN WICHITA, KANSAS 67203 http://www.teat.com/~srb 316-264-8008 FAX 264-4621 E-mail: urb@teat.com SAVOY, RUGGLES & BOHM, P. A. ENGINEERING & SURVEYING