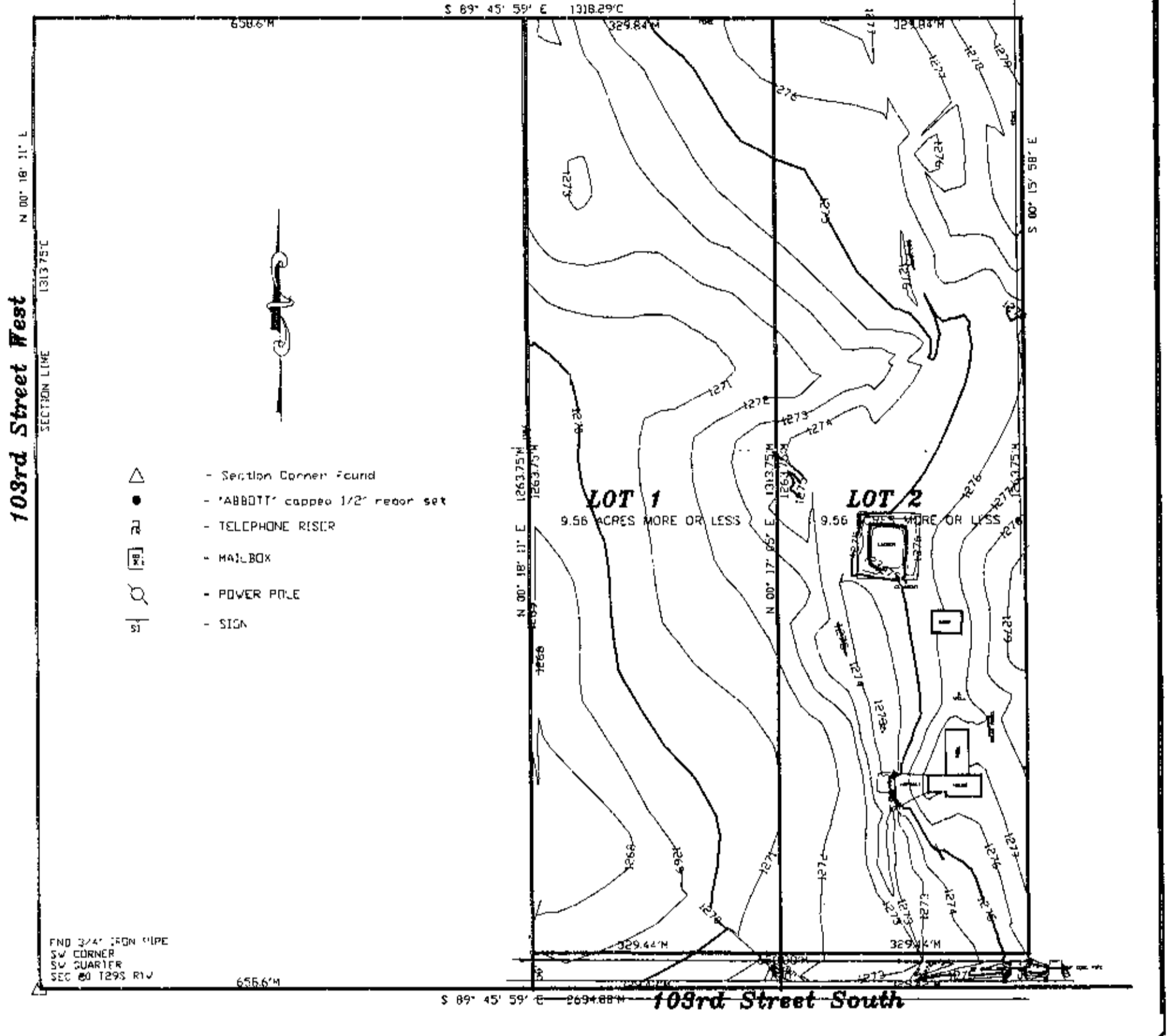


SKETCH PLAN LEARMONT ADDITION TO SEDGWICK COUNTY, KANSAS



- △ - Section Corner Found
- - 'ABBOTT' capped 1/2" rebar set
- ⊠ - TELEPHONE RISER
- ⊞ - MAILBOX
- ⊕ - POWER POLE
- ⊙ - SIGN

FIND 3/4" IRON PIPE
SW CORNER
SW QUARTER
SEC 20 T29S R1W

103rd Street South