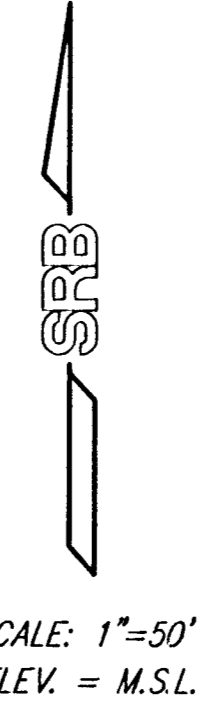
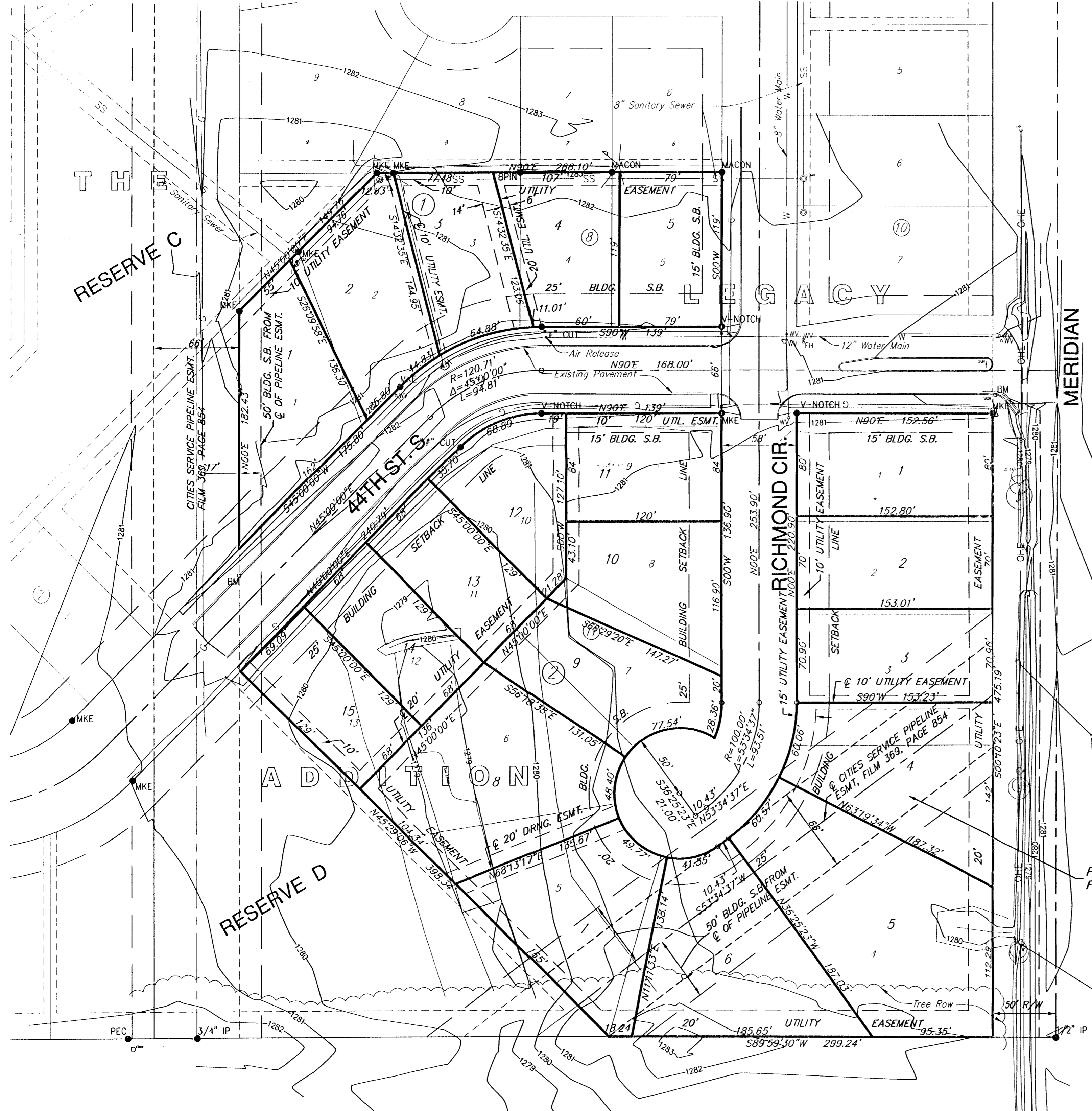


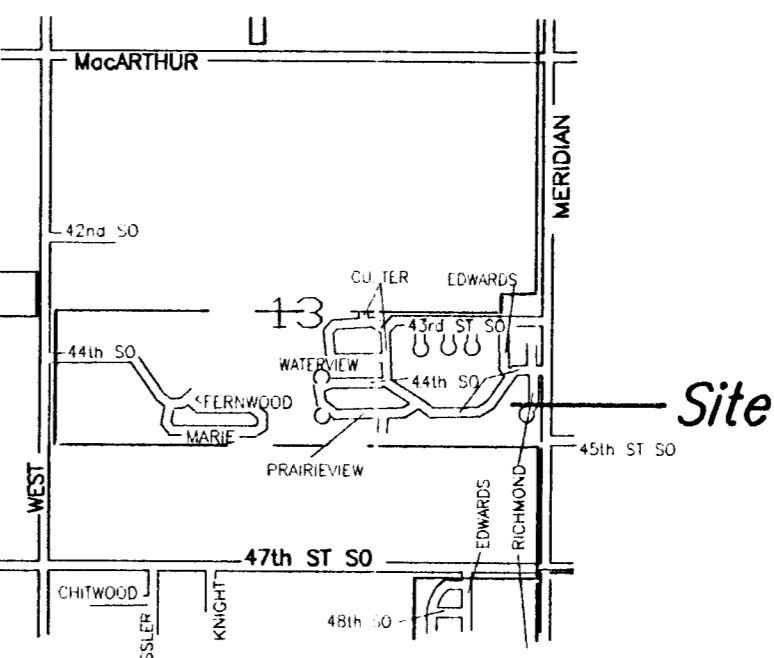
PRELIMINARY PLAT LEGACY 2ND ADDITION WICHITA, SEDGWICK COUNTY, KANSAS

LEGAL DESCRIPTION :
A replat of Lots 1 through 13, Block 11, and Lots 1 through 5, Block 8, The Legacy Addition, an Addition to Wichita, Sedgwick County, Kansas.



City of Wichita Benchmark:
44' north and 30' east of 1/4 Sec. Cor. @ Meridian and 43rd St. South. Elev. 1280.80 (M.S.L.)

On-Site Bench Marks:
Square Cut, Top of south curb of 44th St. S. at the N.E. Cor. of Lot 1, Block 11, The Legacy Addition. Elev. 1280.76 (M.S.L.)
Square Cut, Top of north curb 44th St. S. at the west line of Lot 1, Block 8, The Legacy Addition. Elev. 1282.36 (M.S.L.)



LOCATION MAP
NO SCALE