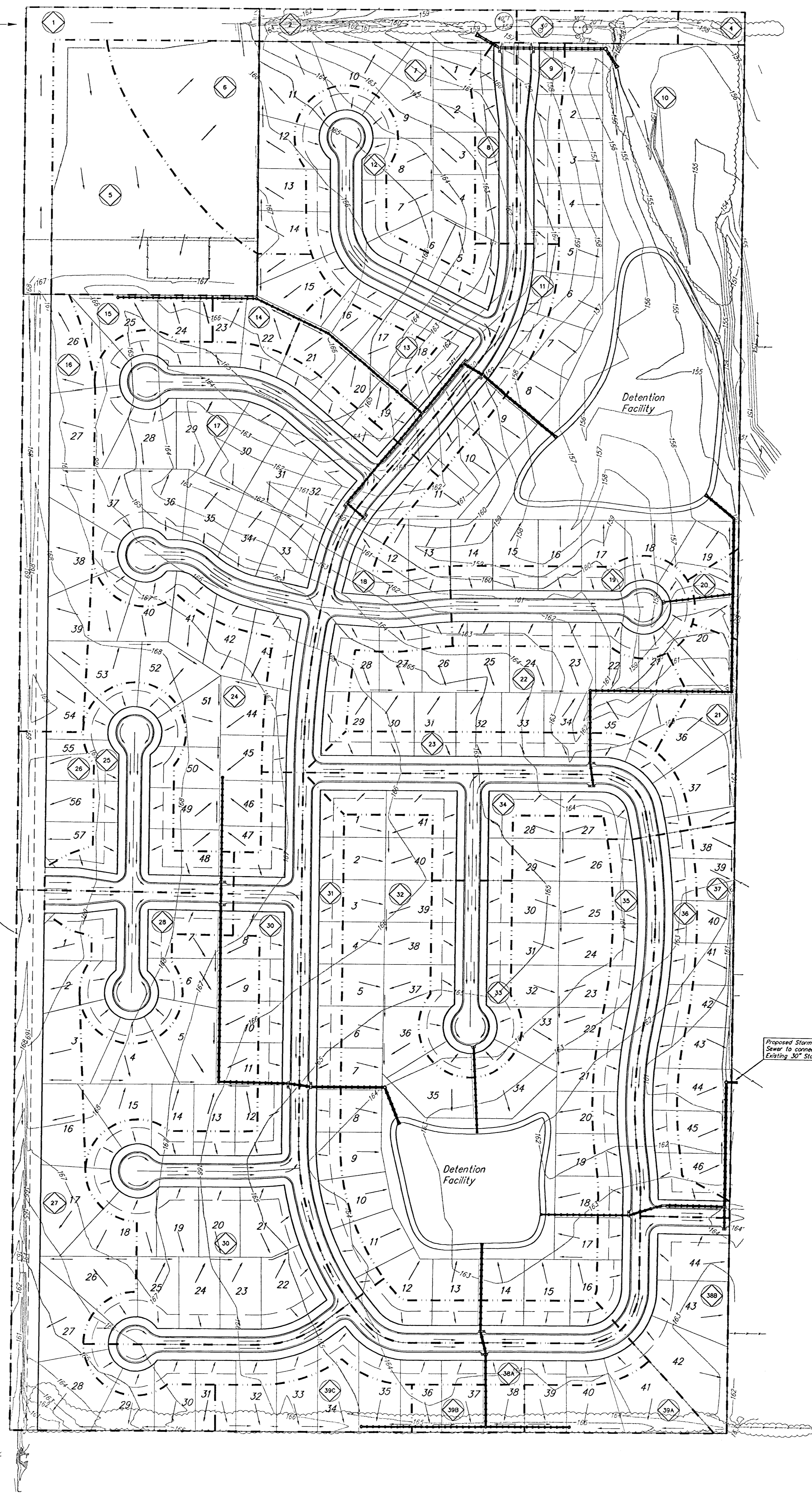


DRAINAGE CONCEPT LIBERTY PARK AN ADDITION TO WICHITA, SEDGWICK COUNTY, KANSAS

Off-Site Drainage
 C₁ = 250 cfs
 C₂ = 102 cfs
 C₃ = 44 cfs
 C₄ = 150 cfs
 C₅ = 392 cfs

Off-Site Drainage
 C₁ = 250 cfs
 C₂ = 102 cfs
 C₃ = 44 cfs
 C₄ = 150 cfs
 C₅ = 392 cfs



Basin ID	Area	12		15		1100	
		By Ar	By Ar	By Ar	By Ar	By Ar	By Ar
1	1.1	0.46	0.49	0.67	1.9	2.5	5.4
2	0.7	0.46	0.49	0.67	1.2	1.6	3.5
3	0.4	0.46	0.49	0.67	0.7	0.9	2.0
4	0.2	0.46	0.49	0.67	0.4	0.4	1.0
5	2.5	0.46	0.49	0.67	4.4	5.6	12
6	1.6	0.46	0.49	0.67	2.8	3.6	7.9
7	2.5	0.46	0.49	0.67	4.4	5.6	12
8	0.6	0.46	0.49	0.67	1.1	1.3	3.0
9	0.7	0.46	0.49	0.67	1.2	1.6	3.5
10	2.2	0.46	0.49	0.67	1.6	2.1	4.5
11	0.8	0.46	0.49	0.67	1.4	1.8	4.0
12	2.6	0.46	0.49	0.67	4.6	5.8	13
13	0.8	0.46	0.49	0.67	1.4	1.8	4.0
14	0.6	0.46	0.49	0.67	1.1	1.3	3.0
15	0.5	0.46	0.49	0.67	0.9	1.1	2.5
16	2.3	0.46	0.49	0.67	4.1	5.1	11
17	2.9	0.46	0.49	0.67	1.9	2.3	2.9
18	1.6	0.46	0.49	0.67	2.8	3.6	7.9
19	1.6	0.46	0.49	0.67	2.8	3.6	7.9
20	0.2	0.46	0.49	0.67	0.4	0.4	1.0
21	0.9	0.46	0.49	0.67	1.6	2.0	4.4
22	2.3	0.46	0.49	0.67	4.1	5.1	11
23	1.3	0.46	0.49	0.67	2.3	2.9	6.4
24	2.3	0.46	0.49	0.67	4.1	5.1	11
25	1.7	0.46	0.49	0.67	3.0	3.8	8.4
26	0.8	0.46	0.49	0.67	1.4	1.8	4.0
27	3.6	0.46	0.49	0.67	6.3	8.0	18
28	1.3	0.46	0.49	0.67	2.3	2.9	6.4
29	2.0	0.46	0.49	0.67	3.5	4.5	9.9
30	4.9	0.46	0.49	0.67	8.6	11	24
31	1.7	0.46	0.49	0.67	3.0	3.8	8.4
32	2.9	0.46	0.49	0.67	1.9	2.3	2.9
33	1.3	0.46	0.49	0.67	2.3	2.9	6.4
34	1.5	0.46	0.49	0.67	2.6	3.4	7.4
35	2.4	0.46	0.49	0.67	4.2	5.4	12
36	1.4	0.46	0.49	0.67	2.5	3.1	6.9
37	1.3	0.46	0.49	0.67	2.3	2.9	6.4
38A	1.9	0.46	0.49	0.67	3.3	4.2	9.4
38B	1.3	0.46	0.49	0.67	2.3	3.0	6.4
38C	0.7	0.46	0.49	0.67	1.2	1.6	3.5
38D	0.4	0.46	0.49	0.67	0.7	0.9	2.0
38E	0.8	0.46	0.49	0.67	1.4	1.8	4.0

Proposed Stormwater
Sewer to connect to
Existing 30" Storm Sewer

Off-Site Drainage
 C₁ = 250 cfs
 C₂ = 87 cfs
 C₃ = 92 cfs
 C₄ = 129 cfs
 C₅ = 429 cfs