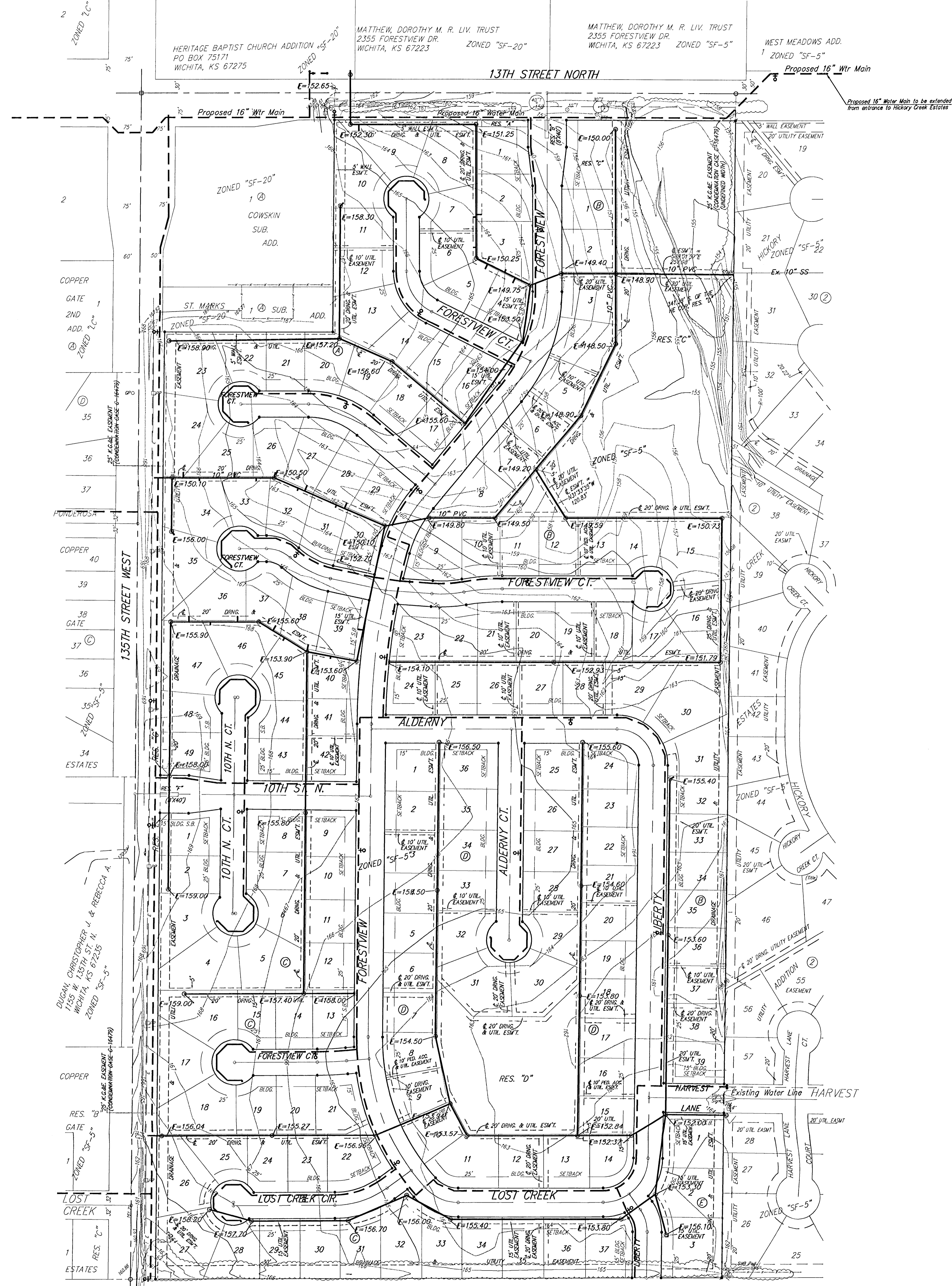


UTILITY PLAN

LIBERTY PARK 2ND

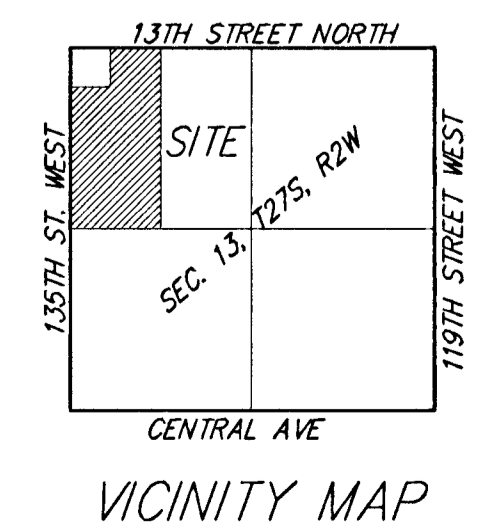
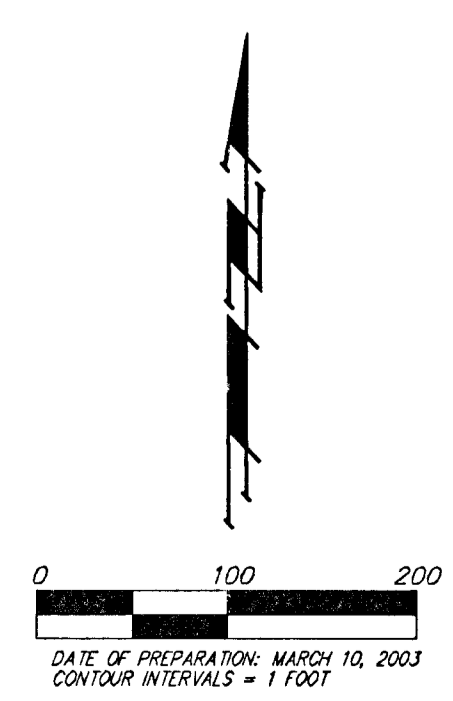
AN ADDITION TO WICHITA, SEDGWICK COUNTY, KANSAS



BENCHMARK:
 135th St. W. & 13th St. N. - City of
 Wichita Benchmark Dis. SE corner of
 intersection.
 56' East of Centerline
 55' North of Centerline
 Elev. = 1678.1 City Datum
 (1555.23 NGVD29)

604' Nod in High Line Pole, 800' W. &
 31' N. of the NE cor. NW/4, Sec. 13,
 Twp. 27-S, R.-2-W
 Elev. = 1300.08 NGVD29
 (162.68 City Datum)

MINIMUM BUILDING PAD ELEVATIONS FOR LOWEST OPENING TO THE STRUCTURES		
LOT	BLOCK	ELEVATION CITY DATUM
1-15	B	156.5
5-20, 29-32	D	163.5



- LEGEND**
- Proposed Water Line
(B" Unless Noted Otherwise)
 - - - Proposed Sanitary Sewer Line
(8" Unless Noted Otherwise)
 - Proposed Sanitary Sewer Manhole
 - ⊕ Proposed Fire Hydrant

BAUGHMAN COMPANY P. A.
 ENGINEERING, SURVEYING, & PLANNING
 316-282-7271 • 316-282-7272 • WICHITA, KANSAS 67223
 2194 LIBERTY PARK DR. WICHITA, KANSAS 67223