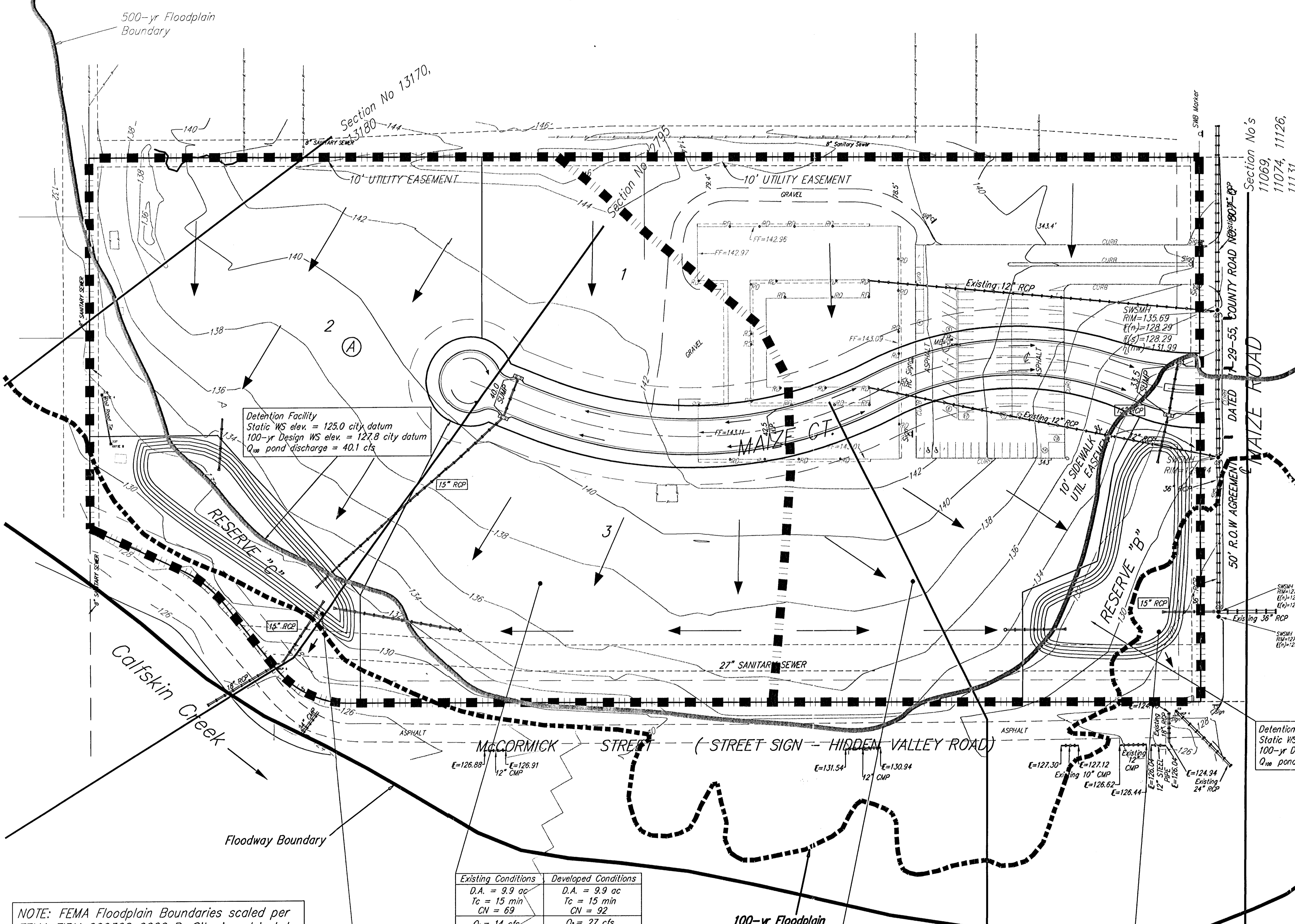
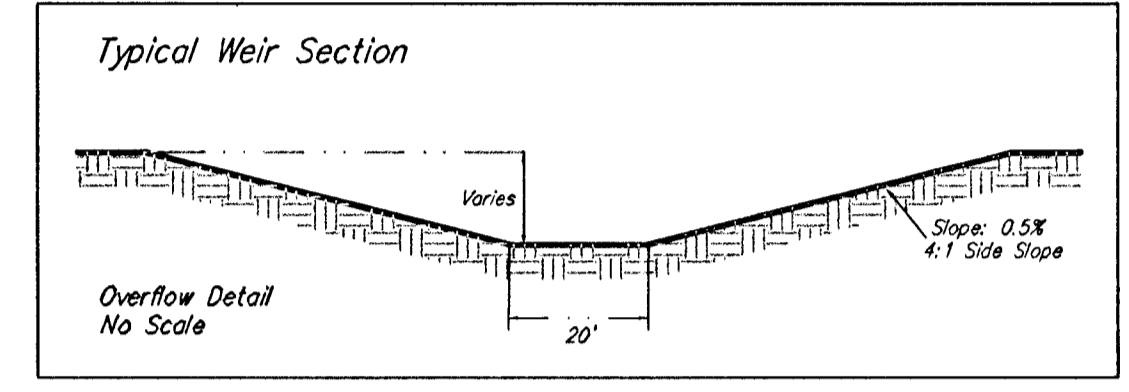
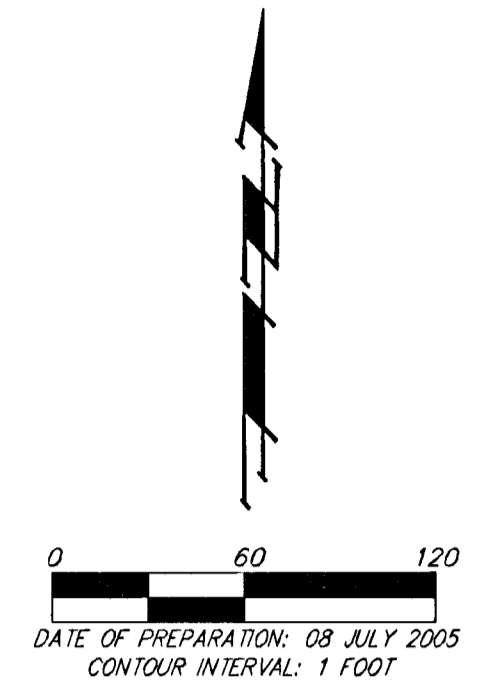


DRAINAGE PLAN

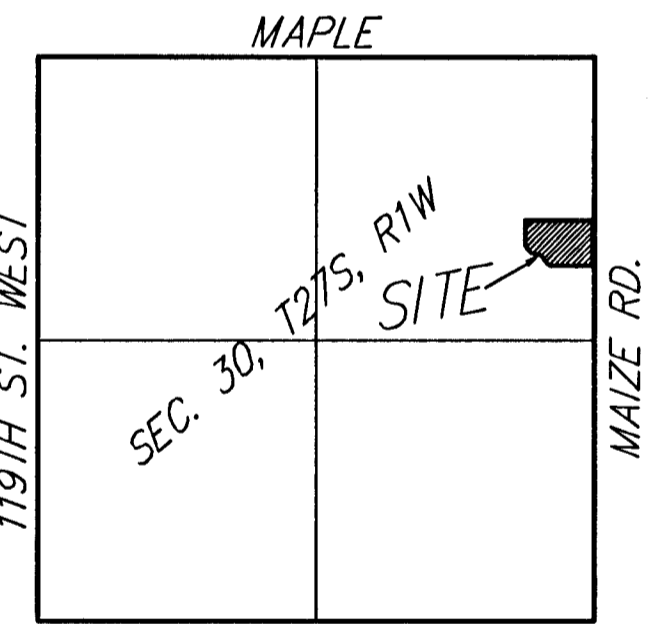
LILLIE ADDITION

WICHITA, SEDGWICK COUNTY, KANSAS



Detention Facility
 Static WS elev. = 125.0 city datum
 100-yr Design WS elev. = 127.8 city datum
 Q_{100} pond discharge = 40.1 cfs

Detention Facility
 Static WS elev. = 125.5 city datum
 100-yr Design WS elev. = 127.3 city datum
 Q_{100} pond discharge = 30 cfs



NOTE: FEMA Floodplain Boundaries scaled per FEMA FIRM 200328 0020 B. Site is subject to FEMA LOMR Case 96-07-161P, June 26, 1997.

BENCHMARK:
 CITY OF WICHITA BENCHMARK DISC -
 MAIZE ROAD & McCORMICK (HIDDEN VALLEY)
 0.5 MI. S. OF MAPLE ON THE NE CORNER
 OF R.C.B.C. OVER COWSKIN CREEK,
 SOUTH OF HIDDEN VALLEY
 ELEV. = 131.53 CITY DATUM
 (1318.93 NGVD29)

Construct overflow weir section. See detail above.

Existing Conditions	Developed Conditions
D.A. = 9.9 ac	D.A. = 9.9 ac
T_c = 15 min	T_c = 15 min
CN = 69	CN = 92
Q_1 = 14 cfs	Q_1 = 27 cfs
Q_2 = 21 cfs	Q_2 = 35 cfs
Q_{100} = 48 cfs	Q_{100} = 66 cfs

Existing Conditions	Developed Conditions
D.A. = 7.4 ac	D.A. = 7.4 ac
T_c = 15 min	T_c = 15 min
CN = 82	CN = 92
Q_1 = 15 cfs	Q_1 = 20 cfs
Q_2 = 22 cfs	Q_2 = 27 cfs
Q_{100} = 44 cfs	Q_{100} = 49 cfs

Construct overflow weir section. See detail above.

Note: Minimum Pad Elevation for all structures shall be 1319.5 msl (132.1 City Datum)

REVISED 08 JULY 2005
 24 MAY 2005

Baughman Company, P.A.
 315 Ellis St. Wichita, KS 67211 P 316-262-7271 F 316-262-0149
 ENGINEERING | SURVEYING | PLANNING | LANDSCAPE ARCHITECTURE