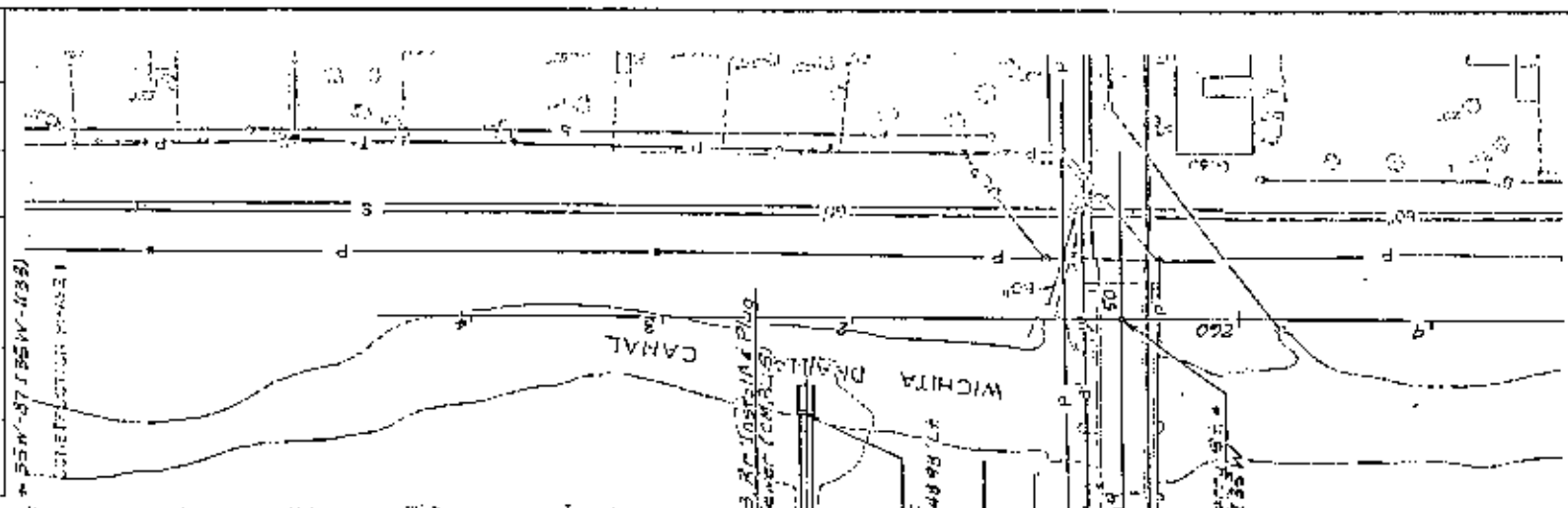


PLAT	STATE	PROJECT	SHEET	TOTAL
7	KANSAS	W	172	457
NO. 1	NO. 2	NO. 3	NO. 4	NO. 5



STATE HIGHWAY COMMISSION OF KANSAS			
HARRY ST. FRONTAGE RD. PLAN			
NO.	DATE	REVISIONS	BY

FRONTAGE ROAD D
CURVE DATA (SEE DET.)
 A = 90° 27' 33" RT
 R = 65.50'
 T = 65.03'
 L = 103.41'
 E = 41.42'
 PC STA. 47+25.47
 PT STA. 47+42.64
 PI STA. 47+34.05
 PT STA. 48+30.04

Ref to R37 Sta. 30+40.30 E Harry
 1 City Monument at R37
 2 E.C. Const. Sign Base 50.50' S.V.
 3 Top C.C. FH Sign Base 30.50' N.V.
 4 5'x 7' Sign in Conc. Sign Base 43.30' N.E.

Sta. 47+25.47 Frontage R.D. Const.
 Curb Inlet Type II, 18x10" RT
 Install 24" x 36" Storm Sewer (S)
 See Sh. No. 43, 104, 113

Sta. 41+45.58 101.02' LT Harry St to
 Sta. 41+45.58 101.02' LT Harry St
 Const. 42" Transition from 36"
 RCB to 60" RCB (NE)
 See Sh. No. 132, 133

Sta. 40+54.94 25.00' LT Harry St to
 Sta. 41+45.58 101.02' LT Harry St
 Const. 42" Transition from 36"
 RCB to 60" RCB (NE)
 See Sh. No. 132, 133

Sta. 41+45.58 101.02' LT Harry St
 Const. 42" Transition from 36"
 RCB to 60" RCB (NE)
 See Sh. No. 132, 133

Sta. 41+45.58 101.02' LT Harry St
 Const. 42" Transition from 36"
 RCB to 60" RCB (NE)
 See Sh. No. 132, 133

Sta. 41+45.58 101.02' LT Harry St
 Const. 42" Transition from 36"
 RCB to 60" RCB (NE)
 See Sh. No. 132, 133

Sta. 41+45.58 101.02' LT Harry St
 Const. 42" Transition from 36"
 RCB to 60" RCB (NE)
 See Sh. No. 132, 133

Sta. 41+45.58 101.02' LT Harry St
 Const. 42" Transition from 36"
 RCB to 60" RCB (NE)
 See Sh. No. 132, 133

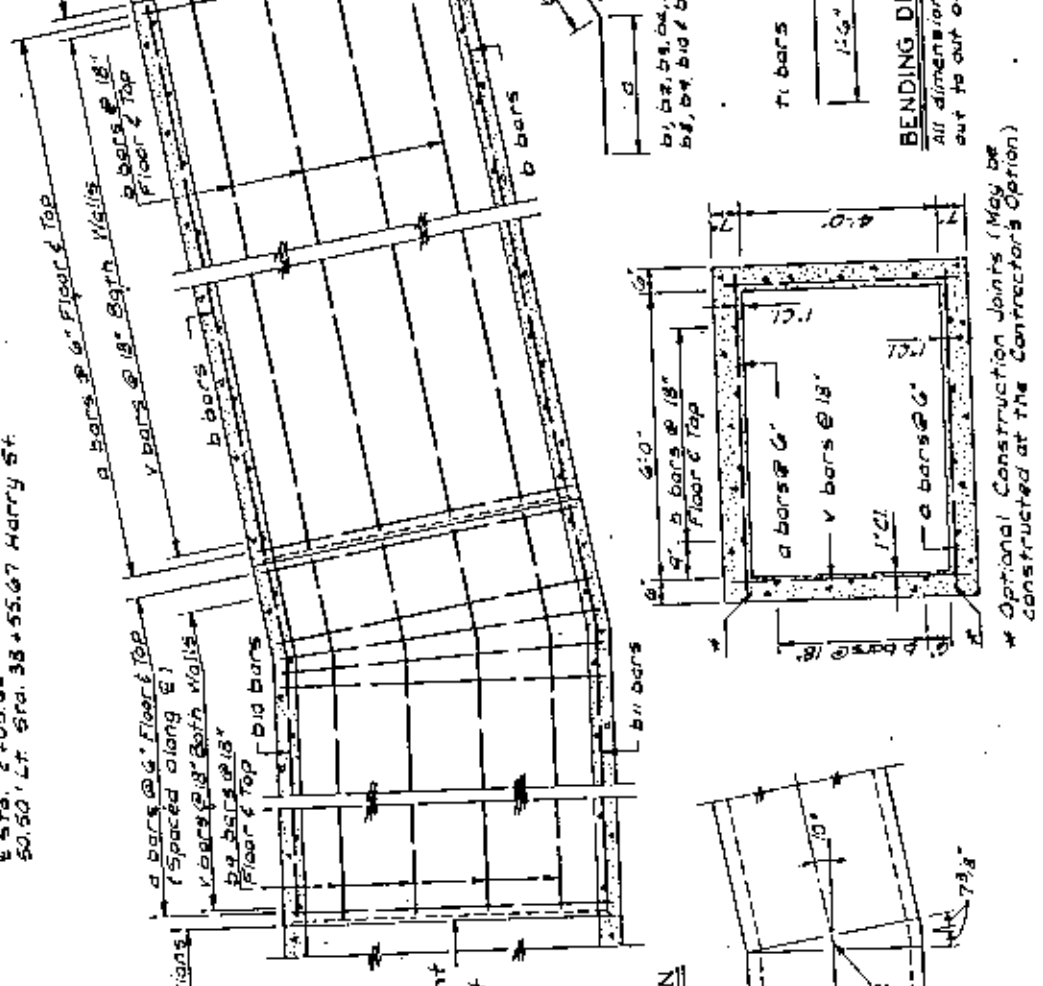
Sta. 41+45.58 101.02' LT Harry St
 Const. 42" Transition from 36"
 RCB to 60" RCB (NE)
 See Sh. No. 132, 133

Sta. 41+45.58 101.02' LT Harry St
 Const. 42" Transition from 36"
 RCB to 60" RCB (NE)
 See Sh. No. 132, 133

For Continuation of

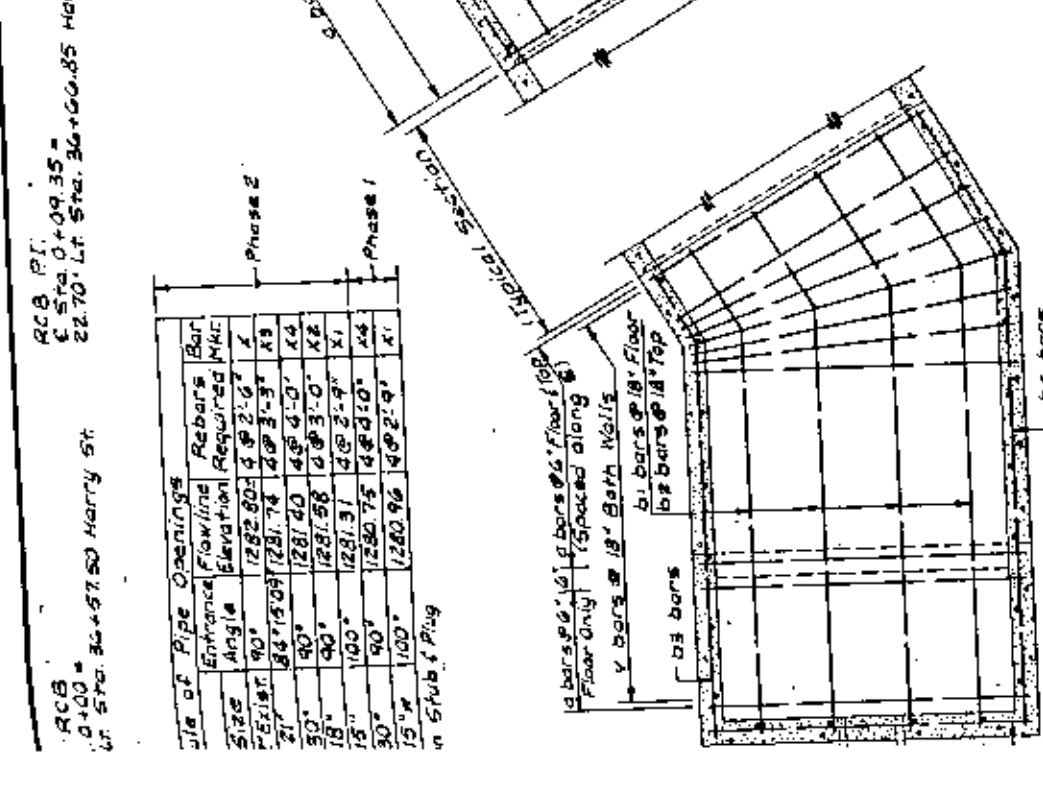
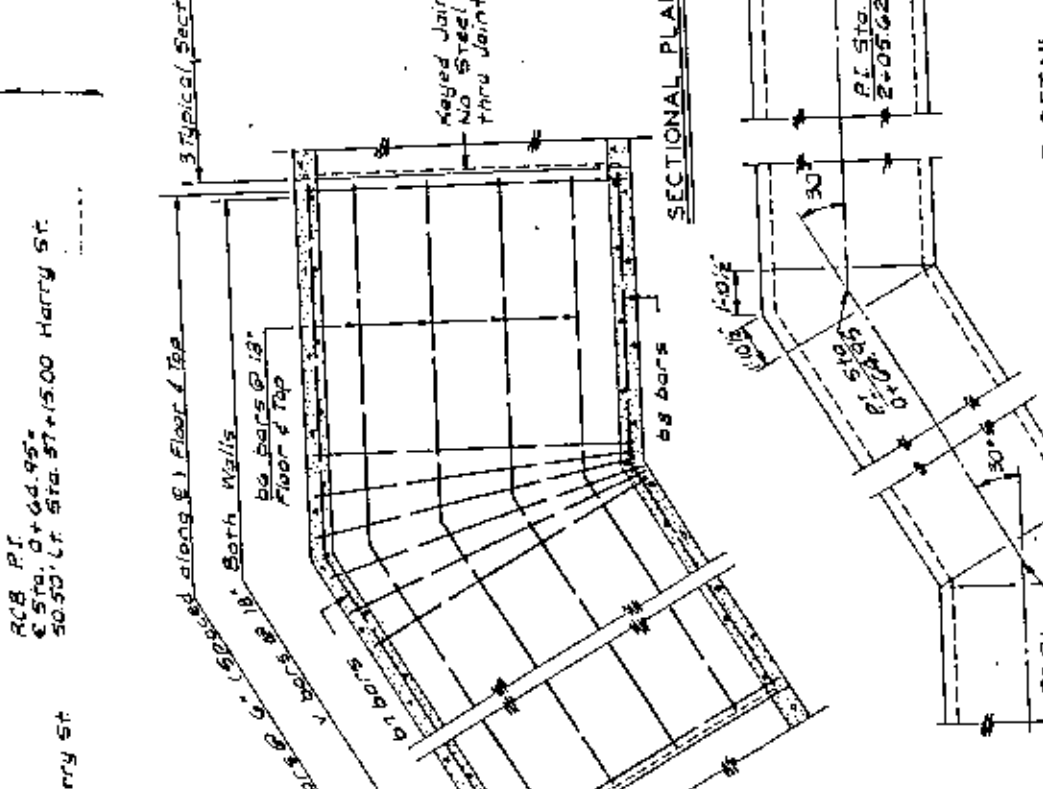
SECTION NO.	DATE	PROJECT NO.	YEAR	SHEET NO.	TOTAL SHEETS
1	1975	175	1975	131	362

CONSTRUCTION PHASE I
 # 25N-07 / 25W-1(23)

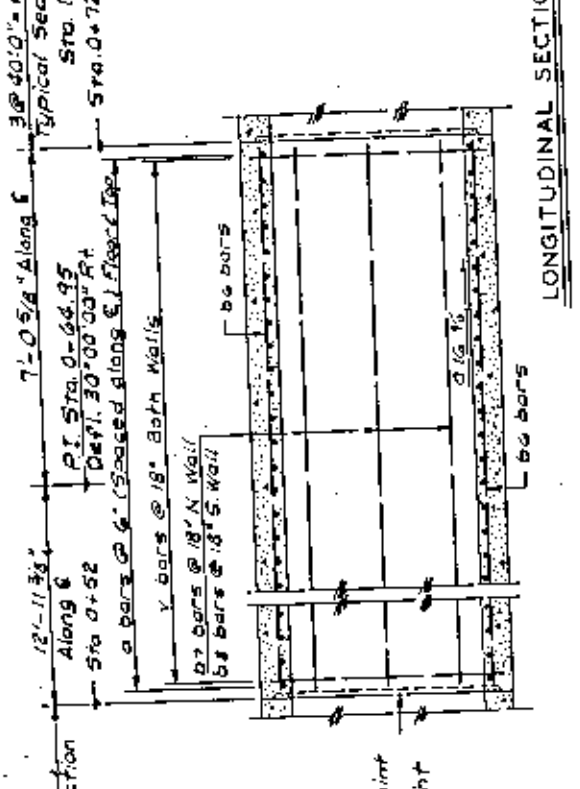


Bar Mark.	Dimension	Bar Quantity
a	12'-0"	1
b	12'-0"	1
c	12'-0"	1
d	12'-0"	1
e	12'-0"	1
f	12'-0"	1
g	12'-0"	1
h	12'-0"	1
i	12'-0"	1
j	12'-0"	1
k	12'-0"	1
l	12'-0"	1
m	12'-0"	1
n	12'-0"	1
o	12'-0"	1
p	12'-0"	1
q	12'-0"	1
r	12'-0"	1
s	12'-0"	1
t	12'-0"	1
u	12'-0"	1
v	12'-0"	1
w	12'-0"	1
x	12'-0"	1
y	12'-0"	1
z	12'-0"	1

BENDING DIAGRAMS
 All dimensions are out to out of bars

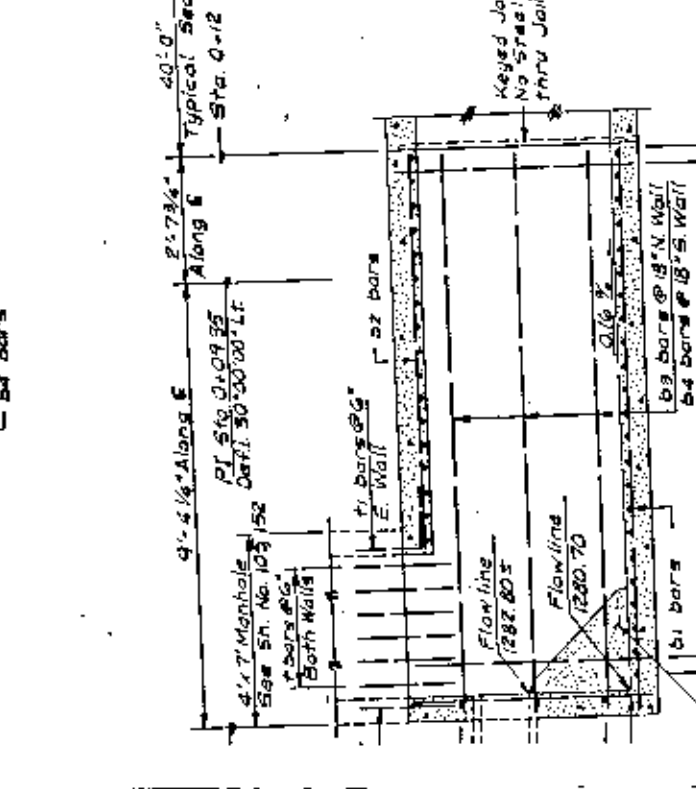
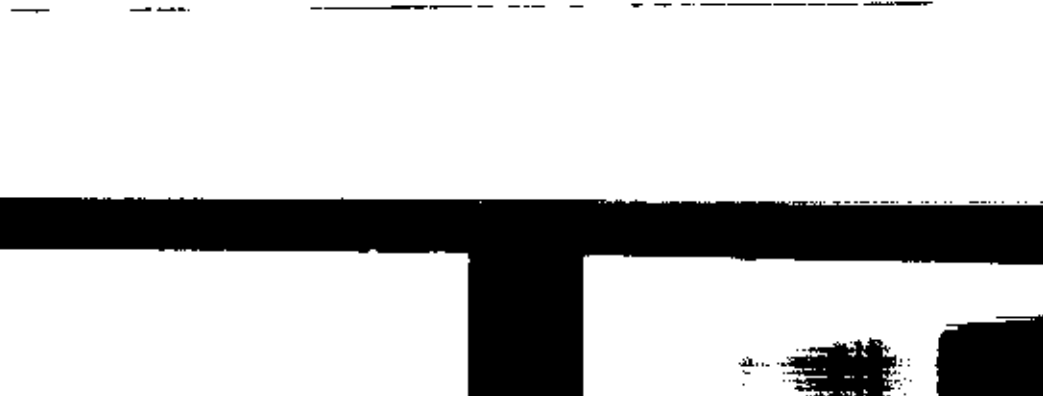


TYPICAL SECTION THRU BOX
 Scale: 1/2" = 1'-0"



Bar List & Quantity Summary - Sta. 4+00 to Sta. 4+08 (Phase 1 & Phase 2)

Bar	a	b	c	d	e	f	g	h	i	j	k	l	m	n	o	p	q	r	s	t	u	v	w	x	y	z
Quantity	1	1	1	1	1	1	1	1	1	1	1	1	1	1	1	1	1	1	1	1	1	1	1	1	1	1



Bar List & Quantity Summary - Sta. 4+08 to Sta. 4+16 (Phase 1 & Phase 2)

Bar	a	b	c	d	e	f	g	h	i	j	k	l	m	n	o	p	q	r	s	t	u	v	w	x	y	z
Quantity	1	1	1	1	1	1	1	1	1	1	1	1	1	1	1	1	1	1	1	1	1	1	1	1	1	1

CONSTRUCTION PHASES
 Phase 1: Sta. 4+08 to Sta. 4+16
 Phase 2: Sta. 4+16 to Sta. 4+24

Scale: 1/2" = 1'-0" (EXCEPT WHERE NOTED)
 Sta. 4+16
 Flowline 1280.00
 0.25%

STATE HIGHWAY COMMISSION OF KANSAS
 6x4/6x5 RCB STORM SEWER
 STA. 0+00 TO STA. 4+88
 "LT. OF I-35W STA. 262+25

WILSON & COMPANY
 ENGINEERS & ARCHITECTS
 WILSON, KANSAS

1 OF 2

Note: Sheet No. 141 Bar
 General Notes
 2 Typical Pipe Installation
 Note: Temporary Plug of
 3" Bridge Plug to be
 Constructed at Sta. 4+08.
 Subsidiary to RCB
 Construction.

Class A Concrete

Reinforcing Steel

20,520 LBS

20,520 C.Y.

1325 C.Y.

AREA	STATE	PROJECT	MEET	TOTAL
7	7	4	1078	1078
REVISIONS				NO.
1. 10/15/52				1078
2. 11/15/52				1078
3. 12/15/52				1078
4. 1/15/53				1078
5. 2/15/53				1078
6. 3/15/53				1078
7. 4/15/53				1078
8. 5/15/53				1078
9. 6/15/53				1078
10. 7/15/53				1078
11. 8/15/53				1078
12. 9/15/53				1078
13. 10/15/53				1078
14. 11/15/53				1078
15. 12/15/53				1078
16. 1/15/54				1078
17. 2/15/54				1078
18. 3/15/54				1078
19. 4/15/54				1078
20. 5/15/54				1078
21. 6/15/54				1078
22. 7/15/54				1078
23. 8/15/54				1078
24. 9/15/54				1078
25. 10/15/54				1078
26. 11/15/54				1078
27. 12/15/54				1078
28. 1/15/55				1078
29. 2/15/55				1078
30. 3/15/55				1078
31. 4/15/55				1078
32. 5/15/55				1078
33. 6/15/55				1078
34. 7/15/55				1078
35. 8/15/55				1078
36. 9/15/55				1078
37. 10/15/55				1078
38. 11/15/55				1078
39. 12/15/55				1078
40. 1/15/56				1078
41. 2/15/56				1078
42. 3/15/56				1078
43. 4/15/56				1078
44. 5/15/56				1078
45. 6/15/56				1078
46. 7/15/56				1078
47. 8/15/56				1078
48. 9/15/56				1078
49. 10/15/56				1078
50. 11/15/56				1078
51. 12/15/56				1078
52. 1/15/57				1078
53. 2/15/57				1078
54. 3/15/57				1078
55. 4/15/57				1078
56. 5/15/57				1078
57. 6/15/57				1078
58. 7/15/57				1078
59. 8/15/57				1078
60. 9/15/57				1078
61. 10/15/57				1078
62. 11/15/57				1078
63. 12/15/57				1078
64. 1/15/58				1078
65. 2/15/58				1078
66. 3/15/58				1078
67. 4/15/58				1078
68. 5/15/58				1078
69. 6/15/58				1078
70. 7/15/58				1078
71. 8/15/58				1078
72. 9/15/58				1078
73. 10/15/58				1078
74. 11/15/58				1078
75. 12/15/58				1078
76. 1/15/59				1078
77. 2/15/59				1078
78. 3/15/59				1078
79. 4/15/59				1078
80. 5/15/59				1078
81. 6/15/59				1078
82. 7/15/59				1078
83. 8/15/59				1078
84. 9/15/59				1078
85. 10/15/59				1078
86. 11/15/59				1078
87. 12/15/59				1078
88. 1/15/60				1078
89. 2/15/60				1078
90. 3/15/60				1078
91. 4/15/60				1078
92. 5/15/60				1078
93. 6/15/60				1078
94. 7/15/60				1078
95. 8/15/60				1078
96. 9/15/60				1078
97. 10/15/60				1078
98. 11/15/60				1078
99. 12/15/60				1078
100. 1/15/61				1078
101. 2/15/61				1078
102. 3/15/61				1078
103. 4/15/61				1078
104. 5/15/61				1078
105. 6/15/61				1078
106. 7/15/61				1078
107. 8/15/61				1078
108. 9/15/61				1078
109. 10/15/61				1078
110. 11/15/61				1078
111. 12/15/61				1078
112. 1/15/62				1078
113. 2/15/62				1078
114. 3/15/62				1078
115. 4/15/62				1078
116. 5/15/62				1078
117. 6/15/62				1078
118. 7/15/62				1078
119. 8/15/62				1078
120. 9/15/62				1078
121. 10/15/62				1078
122. 11/15/62				1078
123. 12/15/62				1078
124. 1/15/63				1078
125. 2/15/63				1078
126. 3/15/63				1078
127. 4/15/63				1078
128. 5/15/63				1078
129. 6/15/63				1078
130. 7/15/63				1078
131. 8/15/63				1078
132. 9/15/63				1078
133. 10/15/63				1078
134. 11/15/63				1078
135. 12/15/63				1078
136. 1/15/64				1078
137. 2/15/64				1078
138. 3/15/64				1078
139. 4/15/64				1078
140. 5/15/64				1078
141. 6/15/64				1078
142. 7/15/64				1078
143. 8/15/64				1078
144. 9/15/64				1078
145. 10/15/64				1078
146. 11/15/64				1078
147. 12/15/64				1078
148. 1/15/65				1078
149. 2/15/65				1078
150. 3/15/65				1078
151. 4/15/65				1078
152. 5/15/65				1078
153. 6/15/65				1078
154. 7/15/65				1078
155. 8/15/65				1078
156. 9/15/65				1078
157. 10/15/65				1078
158. 11/15/65				1078
159. 12/15/65				1078
160. 1/15/66				1078
161. 2/15/66				1078
162. 3/15/66				1078
163. 4/15/66				1078
164. 5/15/66				1078
165. 6/15/66				1078
166. 7/15/66				1078
167. 8/15/66				1078
168. 9/15/66				1078
169. 10/15/66				1078
170. 11/15/66				1078
171. 12/15/66				1078
172. 1/15/67				1078
173. 2/15/67				1078
174. 3/15/67				1078
175. 4/15/67				1078
176. 5/15/67				1078
177. 6/15/67				1078
178. 7/15/67				1078
179. 8/15/67				1078
180. 9/15/67				1078
181. 10/15/67				1078
182. 11/15/67				1078
183. 12/15/67				1078
184. 1/15/68				1078
185. 2/15/68				1078
186. 3/15/68				1078
187. 4/15/68				1078
188. 5/15/68				1078
189. 6/15/68				1078
190. 7/15/68				1078
191. 8/15/68				1078
192. 9/15/68				1078
193. 10/15/68				1078
194. 11/15/68				1078
195. 12/15/68				1078
196. 1/15/69				1078
197. 2/15/69				1078
198. 3/15/69				1078
199. 4/15/69				1078
200. 5/15/69				1078
201. 6/15/69				1078
202. 7/15/69				1078
203. 8/15/69				1078
204. 9/15/69				1078
205. 10/15/69				1078
206. 11/15/69				1078
207. 12/15/69				1078
208. 1/15/70				1078
209. 2/15/70				1078
210. 3/15/70				1078
211. 4/15/70				1078
212. 5/15/70				1078
213. 6/15/70				1078
214. 7/15/70				1078
215. 8/15/70				1078
216. 9/15/70				1078
217. 10/15/70				1078
218. 11/15/70				1078
219. 12/15/70				1078
220. 1/15/71				1078
221. 2/15/71				1078
222. 3/15/71				1078
223. 4/15/71				1078
224. 5/15/71				1078
225. 6/15/71				1078
226. 7/15/71				1078
227. 8/15/71				1078
228. 9/15/71				1078
229. 10/15/71				1078
230. 11/15/71				1078
231. 12/15/71				1078
232. 1/15/72				1078
233. 2/15/72				1078
234. 3/15/72				1078
235. 4/15/72				1078
236. 5/15/72				1078
237. 6/15/72				1078
238. 7/15/72				1078
239. 8/15/72				1078
240. 9/15/72				1078
241. 10/15/72				1078
242. 11/15/72				1078
243. 12/15/72				1078
244. 1/15/73				1078
245. 2/15/73				1078
246. 3/15/73				1078
247. 4/15/73				1078
248. 5/15/73				1078
249. 6/15/73				1078
250. 7/15/73				1078
251. 8/15/73				1078
252. 9/15/73				1078
253. 10/15/73				1078
254. 11/15/73				1078
255. 12/15/73				1078
256. 1/15/74				1078
257. 2/15/74				1078
258. 3/15/74				1078
259. 4/15/74				1078
260. 5/15/74				1078
261. 6/15/74				1078
262. 7/15/74				1078
263. 8/15/74				1078
264. 9/15/74				1078
265. 10/15/74				1078
266. 11/15/74				1078
267. 12/15/74				1078
268. 1/15/75				1078
269. 2/15/75				1078
270. 3/15/75				1078
271. 4/15/75				1078
272. 5/15/75				1078
273. 6/15/75				1078
274. 7/15/75				1078
275. 8/15/75				1078
276. 9/15/75				1078
277. 10/15/75				1078
278. 11/15/75				1078
279. 12/15/75				1078
280. 1/15/76				1078
281. 2/15/76				1078
282. 3/15/76				1078
283. 4/15/76				1078
284. 5/15/76				1078
285. 6/15/76				1078
286. 7/15/76				1078
287. 8/15/76				1078
288. 9/15/76				1078
289. 10/15/76				1078
290. 11/15/76				1078
291. 12/15/76				1078
292. 1/15/77				1078
293. 2/15/77				1078
294. 3/15/77				1078
295. 4/15/77				1078
296. 5/15/77				1078
297. 6/15/77				1078
298. 7/15/77				1078
299. 8/15/77				1078
300. 9/15/77				1078
301. 10/15/77				1078
302. 11/15/77				1078
303. 12/15/77				1078
304. 1/15/78				1078
305. 2/15/78				1078
306. 3/15/78				1078
307. 4/15/78				1078
308. 5/15/78				1078
309. 6/15/78				1078
310. 7/15/78				1078
311. 8/15/78				1078
312. 9/15/78				1078
313. 10/15/78				1078
314. 11/15/78				1078
315. 12/15/78				1078
316. 1/15/79				1078
317. 2/15/79				1078
318. 3/15/79				1078
319. 4/15/79				1078
320. 5/15/79				1078
321. 6/15/79				1078
322. 7/15/79				1078
323. 8/15/79				

