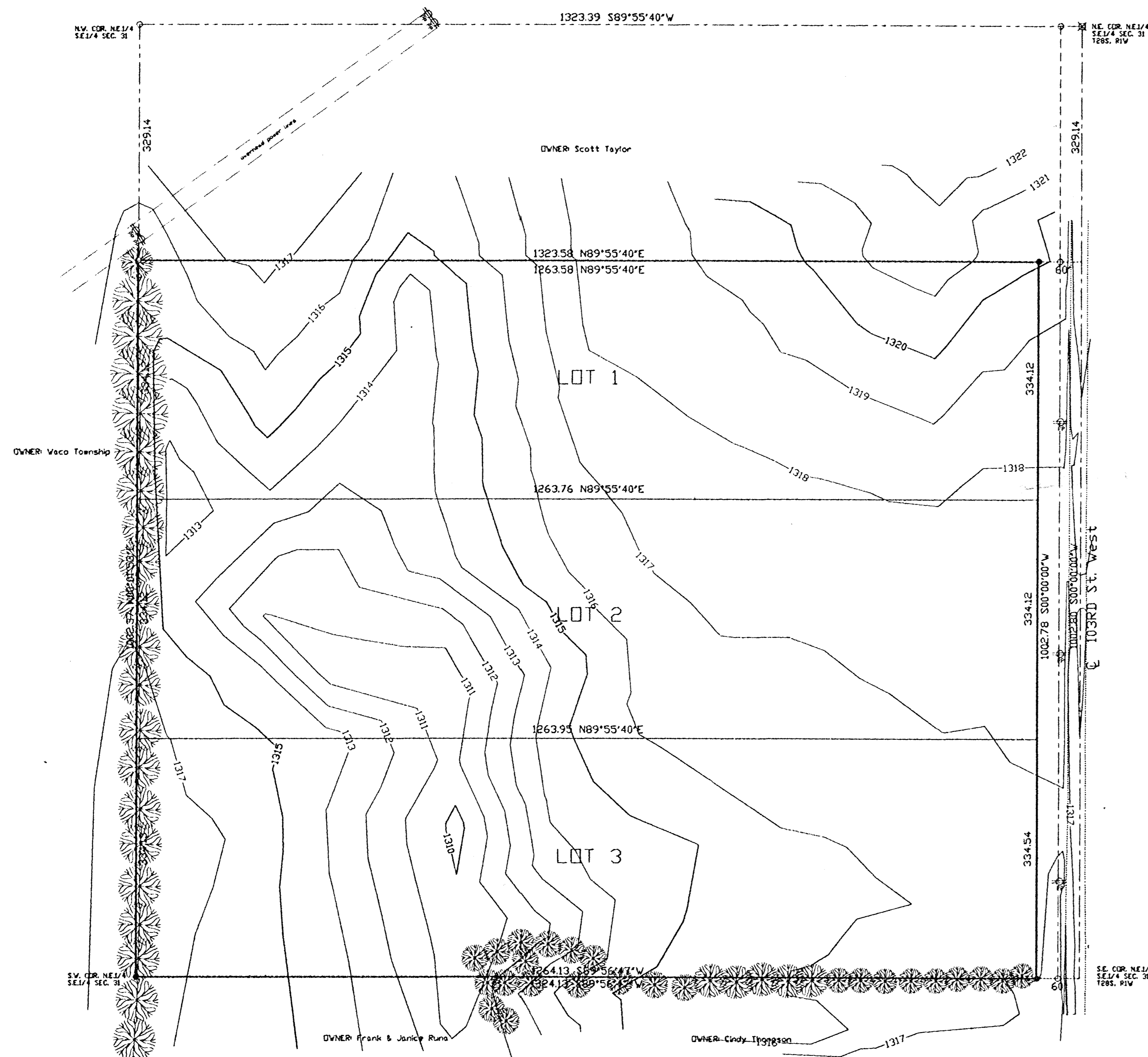


PRELIMINARY PLAT LYDIA LEIS ADDITION TO SEDGWICK COUNTY, KANSAS

OWNERS: Donald A. & Lydia A. Leis
ZONING: RR - Rural Residential

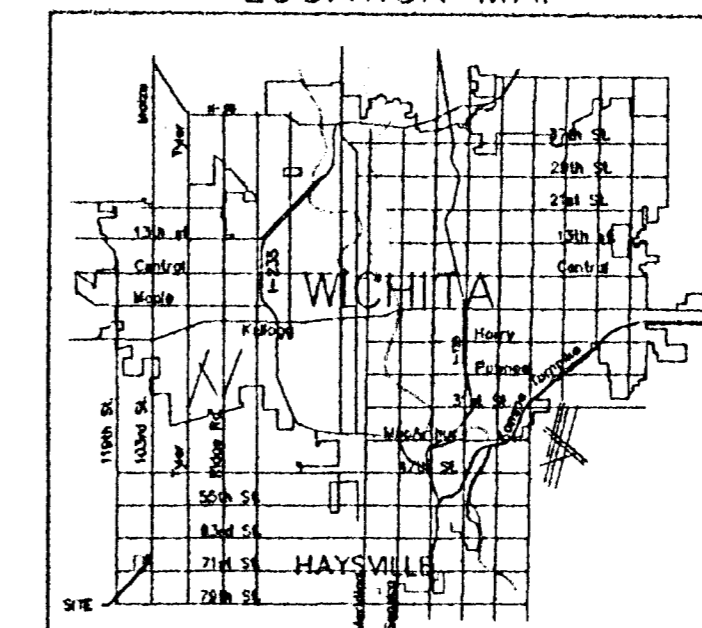
1) The electric lines are overhead in 103rd street R/W.
BM RR spike in power pole 30' south of S.E. corner of Lot 3.



LEGEND

- - 5/8" bar V/tenstrang/cap set
- ✕ - 5/8" rebar found
- - 1/2" rebar V/1.5A 321 cap found
- D - dead distance
- ⊕ - telephone riser
- ⊙ - utility pole

LOCATION MAP



**ARMSTRONG
LAND SURVEY, P.A.**

250 N. MATHEWSON
WICHITA, KANSAS
PH - (316) 263-0082
Fax - (316) 263-0092

