

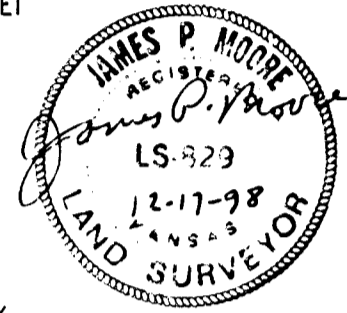
CHAPEL HILL ADDITION TO WICHITA, SEDGWICK COUNTY, KANSAS

STATE OF KANSAS }
COUNTY OF SEDGWICK } SS

WE, PROFESSIONAL ENGINEERING CONSULTANTS, P.A., ENGINEERS AND SURVEYORS IN AFORESAID STATE AND COUNTY, DO HEREBY CERTIFY ON THIS 17th DAY OF December, 1998, THAT WE HAVE SURVEYED AND PLATTED CHAPEL HILL ADDITION TO WICHITA, SEDGWICK COUNTY, KANSAS, INTO LOTS, BLOCKS, STREETS AND RESERVES THE SAME BEING DESCRIBED AS:

THAT PORTION OF THE SOUTHWEST QUARTER OF SECTION 10, TOWNSHIP 27 SOUTH, RANGE 2 EAST OF THE SIXTH PRINCIPAL MERIDIAN, SEDGWICK COUNTY, KANSAS, LYING WEST OF THE K-96 BYPASS AND SOUTH OF THE SOUTH RIGHT-OF-WAY LINE OF THE BURLINGTON NORTHERN RAILROAD, EXCEPT THE WEST 1320 FEET AND EXCEPT THE SOUTH 50 FEET FOR ROAD PURPOSES.

James P. Moore
JAMES P. MOORE, R.L.S. NO. 829
PROFESSIONAL ENGINEERING CONSULTANTS, P.A.



KNOW ALL MEN BY THESE PRESENTS THAT WE, THE UNDERSIGNED PROPERTY OWNERS OF THE LAND AS ABOVE SET FORTH IN THE SURVEYOR'S CERTIFICATE, HAVE CAUSED THE LAND TO BE SURVEYED AND PLATTED INTO LOTS, BLOCKS, STREETS, AND RESERVES THE SAME TO BE KNOWN AS CHAPEL HILL ADDITION TO WICHITA, SEDGWICK COUNTY, KANSAS.

EASEMENTS FOR THE CONSTRUCTION AND MAINTENANCE OF PUBLIC UTILITIES AND DRAINAGE ARE HEREBY GRANTED. THE STREETS ARE HEREBY DEDICATED TO AND FOR THE USE OF THE PUBLIC.

RESERVE "A" IS HEREBY PLATTED FOR PARKS, LANDSCAPING, DRAINAGE, WALKWAYS, RECREATIONAL FACILITIES AND UTILITIES CONFINED TO EASEMENTS.

RESERVE "B" IS HEREBY PLATTED FOR PARKS, LANDSCAPING, DRAINAGE, WALKWAYS, RECREATIONAL FACILITIES, ENTRY MONUMENTS AND UTILITIES CONFINED TO EASEMENTS.

RESERVES "C" AND "D" ARE HEREBY PLATTED FOR ENTRY MONUMENTS, LANDSCAPING AND OPEN SPACE.

RESERVE "E" IS HEREBY PLATTED FOR LAKES, LANDSCAPING, DRAINAGE, WALKWAYS, RECREATIONAL FACILITIES, UTILITIES CONFINED TO EASEMENTS AND FOR TEMPORARY EMERGENCY ACCESS EASEMENT. THE TEMPORARY EMERGENCY ACCESS EASEMENT AS SHOWN IN LOT 1, BLOCK 1, AND GRANTED THROUGH RESERVE "E", SHALL EXPIRE AT SUCH TIME WHEN SUMMERFIELD IS EXTENDED WEST AND CONNECTED TO ANOTHER OUTLET TO 13TH STREET NORTH OR GREENWICH ROAD.

RESERVES "A" THROUGH "E", SHALL BE SUBJECT TO RESTRICTIVE COVENANTS ESTABLISHED BY THE DECLARATION OF LANDOWNERS ASSOCIATION AGREEMENTS AND SHALL BE OWNED AND MAINTAINED BY ONE OR MORE HOMEOWNER'S ASSOCIATIONS TO BE FORMED WITHIN CHAPEL HILL ADDITION.

MINIMUM PAD ELEVATIONS (LOWEST OPENING) AS FOLLOWS:

LOTS BLOCK 1
1 THROUGH 13 ELEV = 175.60 CITY DATUM
ELEV = 1383.0 M.S.L.

THERE SHALL BE COMPLETE ACCESS CONTROL TO AND FROM K-96 BYPASS ALONG THE EAST LINE OF BLOCK 1 AS SHOWN.

ALL ABUTTERS' RIGHTS OF ACCESS TO AND FROM 13TH STREET NORTH OVER AND ACROSS THE SOUTH LINE OF LOT 1, BLOCK 1, AS SHOWN ARE HEREBY GRANTED TO THE CITY OF WICHITA; PROVIDED HOWEVER THAT LOT 1, BLOCK 1, SHALL HAVE ACCESS TO 13TH STREET NORTH AT ONE (1) LOCATION, SAID LOCATION TO BE DETERMINED BY THE CITY ENGINEER OF THE CITY OF WICHITA, KANSAS.

OWNER: THE BOARD OF TRUSTEES OF CHAPEL HILL FELLOWSHIP OF THE UNITED METHODIST CHURCH

BY: Marvin E. Frankamp
MARVIN E. FRANKAMP, TRUSTEE

BY: Hank E. Schichtle
HANK E. SCHICHTLE, TRUSTEE

STATE OF KANSAS }
COUNTY OF SEDGWICK } SS

BE IT REMEMBERED ON THIS 27 DAY OF January, 1998, BEFORE ME, A NOTARY PUBLIC IN AFORESAID STATE AND COUNTY, CAME MARVIN E. FRANKAMP AND HANK E. SCHICHTLE, TRUSTEES OF THE CHAPEL HILL FELLOWSHIP OF THE UNITED METHODIST CHURCH AND TO ME PERSONALLY KNOWN TO BE THE SAME PERSONS WHO EXECUTED THE FOREGOING INSTRUMENT OF WRITING AND DULY ACKNOWLEDGED THE EXECUTION OF SAME FOR AND ON BEHALF OF AND AS THE ACT AND DEED OF SAID FELLOWSHIP IN TESTIMONY WHEREOF, I HAVE HEREUNTO SET MY HAND AND AFFIXED MY NOTARIAL SEAL THE DAY AND YEAR ABOVE WRITTEN.

Debra A. Wolf, NOTARY PUBLIC

Notary Public State of Kansas
Debra A. Wolf
My Appt Exp 3/30/2002

MY COMMISSION EXPIRES: 3/30/2002

THIS PLAT HAS BEEN SUBMITTED TO AND APPROVED BY THE WICHITA-SEDGWICK COUNTY METROPOLITAN AREA PLANNING COMMISSION, WICHITA, KANSAS. DATED THIS _____ DAY OF _____, 1998.

_____, CHAIRMAN
WILLIAM M. JOHNSON

_____, SECRETARY
MARVIN S. KROUT

CONSENT IS HEREBY GIVEN FOR THE FORMATION OF SANITARY SEWER DISTRICTS WITHIN THE BOUNDARY OF THIS PLAT TO THE BOARD OF SEDGWICK COUNTY COMMISSIONERS AS THEY DEEM NECESSARY TO PROVIDE SANITARY SEWER SERVICE IN THIS AREA.

THIS PLAT IS APPROVED AND ALL DEDICATIONS SHOWN HEREON ARE ACCEPTED BY THE CITY COUNCIL OF THE CITY OF WICHITA, KANSAS. DATED THIS _____ DAY OF _____, 1999.

_____, MAYOR
BOB KNIGHT

_____, CITY CLERK
PAT BURNEIT

ENTERED ON TRANSFER RECORD THIS _____ DAY OF _____, 1999.

_____, COUNTY CLERK
JAMES ALFORD

THIS IS TO CERTIFY THAT THIS INSTRUMENT WAS FILED FOR RECORD IN THE REGISTER OF DEEDS OFFICE AT _____ M., ON THIS _____ DAY OF _____, 1999.

_____, REGISTER OF DEEDS
BILL MEEK

_____, DEPUTY
LINDA KIZZIRE

CHAPEL HILL ADDITION TO WICHITA, SEDGWICK COUNTY, KANSAS

SCALE: 1"=100'
 ● = IRON SET UNLESS OTHERWISE NOTED
 B.S.L. = BUILDING SETBACK LINE
 C.A.C. = COMPLETE ACCESS CONTROL

B.M. - BENCH MARK DISC AT S.W. CORNER 13TH STREET NORTH AND GREENWICH ROAD.
 ELEV.=1385.51 M.S.L.
 ELEV.=198.11 CITY DATUM
 B.M. - RAILROAD SPIKE IN EAST FACE OF POWER POLE AT N.E. CORNER 13TH STREET NORTH AND GREENWICH ROAD.
 ELEV.=1383.81 M.S.L.
 ELEV.=196.21 CITY DATUM

MINIMUM PAD ELEVATIONS (LOWEST OPENING) AS FOLLOWS:
 LOTS 1 THROUGH 13
 BLOCK 1
 ELEV = 175.60 CITY DATUM
 ELEV = 1363.0 M.S.L.

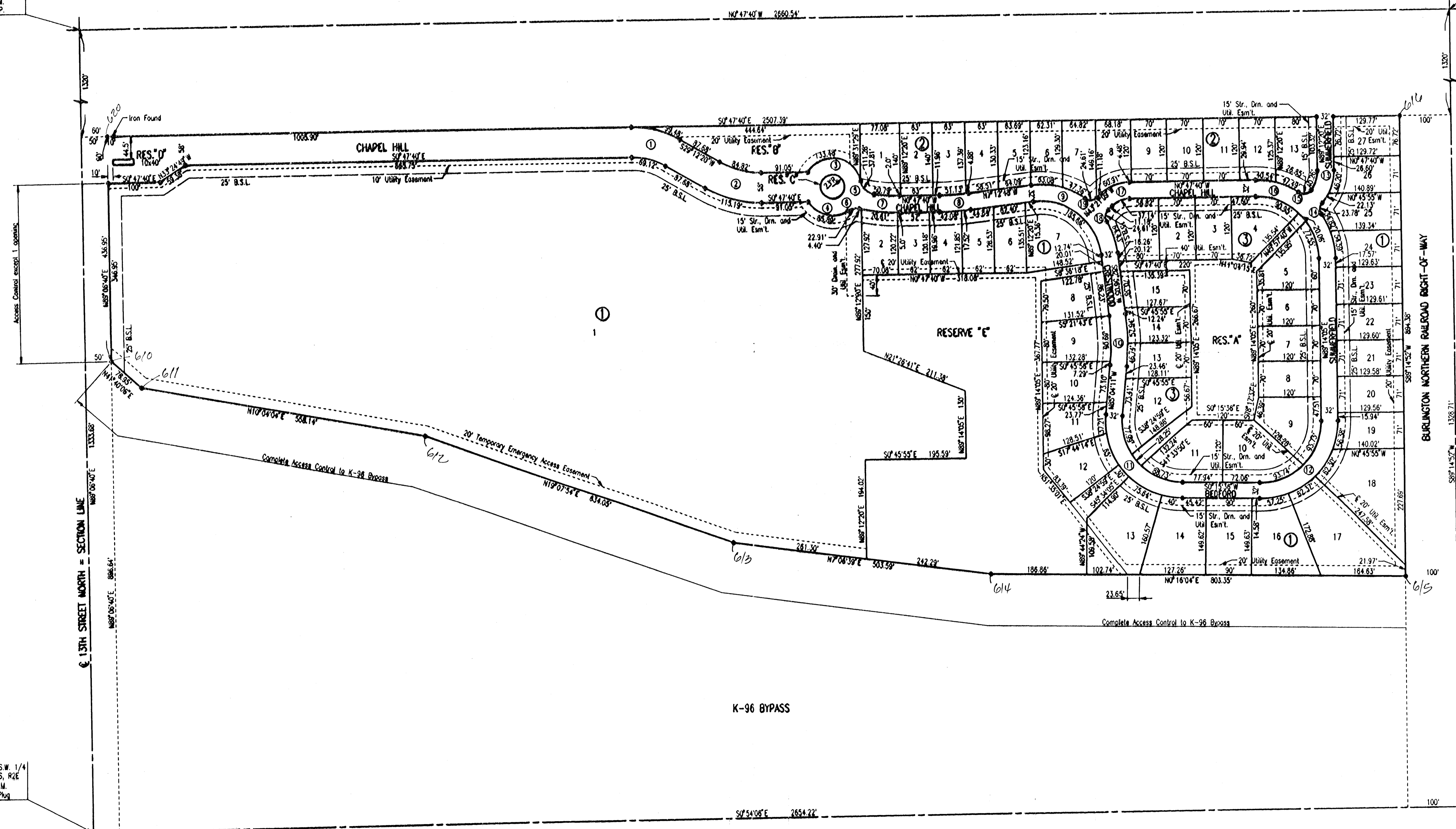
S.W. Corner, S.W. 1/4
 Sec. 10, T27S, R2E
 of the 6th P.M.
 Found 3/4" I.P.

N.W. Corner, S.W. 1/4
 Sec. 10, T27S, R2E
 of the 6th P.M.
 Found R.R. Spike in Pavt.

CURVE TABLE

① = CURVE NUMBER

CURVE NO. 1	190.R	Δ=30°00'00"	132.R
CURVE NO. 2	162.R	Δ=30°00'00"	220.R
CURVE NO. 3	55.R	Δ=135°02'55"	
CURVE NO. 4	55.R	Δ=89°28'19"	
CURVE NO. 5	30.R	Δ=72°12'50"	
CURVE NO. 6	30.R	Δ=43°44'43"	
CURVE NO. 7	336.14.R	Δ=8°39'23"	368.14.R
CURVE NO. 8	500.R	Δ=6°25'08"	532.R
CURVE NO. 9	150.R	Δ=90°08'53"	118.R
CURVE NO. 10	500.R	Δ=11°59'44"	468.R
CURVE NO. 11	118.R	Δ=94°40'13"	150.R
CURVE NO. 12	118.R	Δ=91°01'32"	150.R
CURVE NO. 13	61.16.R	Δ=37°43'25"	93.16.R
CURVE NO. 14	18.R	Δ=75°42'19"	
CURVE NO. 15	18.R	Δ=85°27'35"	
CURVE NO. 16	120.R	Δ=90°01'45"	152.R
CURVE NO. 17	50.R	Δ=42°33'29"	82.R
CURVE NO. 18	18.R	Δ=78°19'26"	
CURVE NO. 19	18.R	Δ=78°19'26"	



S.E. Corner, S.W. 1/4
 Sec. 10, T27S, R2E
 of the 6th P.M.
 Found Lead Plug

N.E. Corner, S.W. 1/4
 Sec. 10, T27S, R2E
 of the 6th P.M.
 Found 3/4" I.P. in
 center of Split Stone

DSMR: SANCHEZ OPER. DEP. SCALE: 1"=100.00
 0.1997.97.009.FINAL 12-17-1998 06:43:22 am