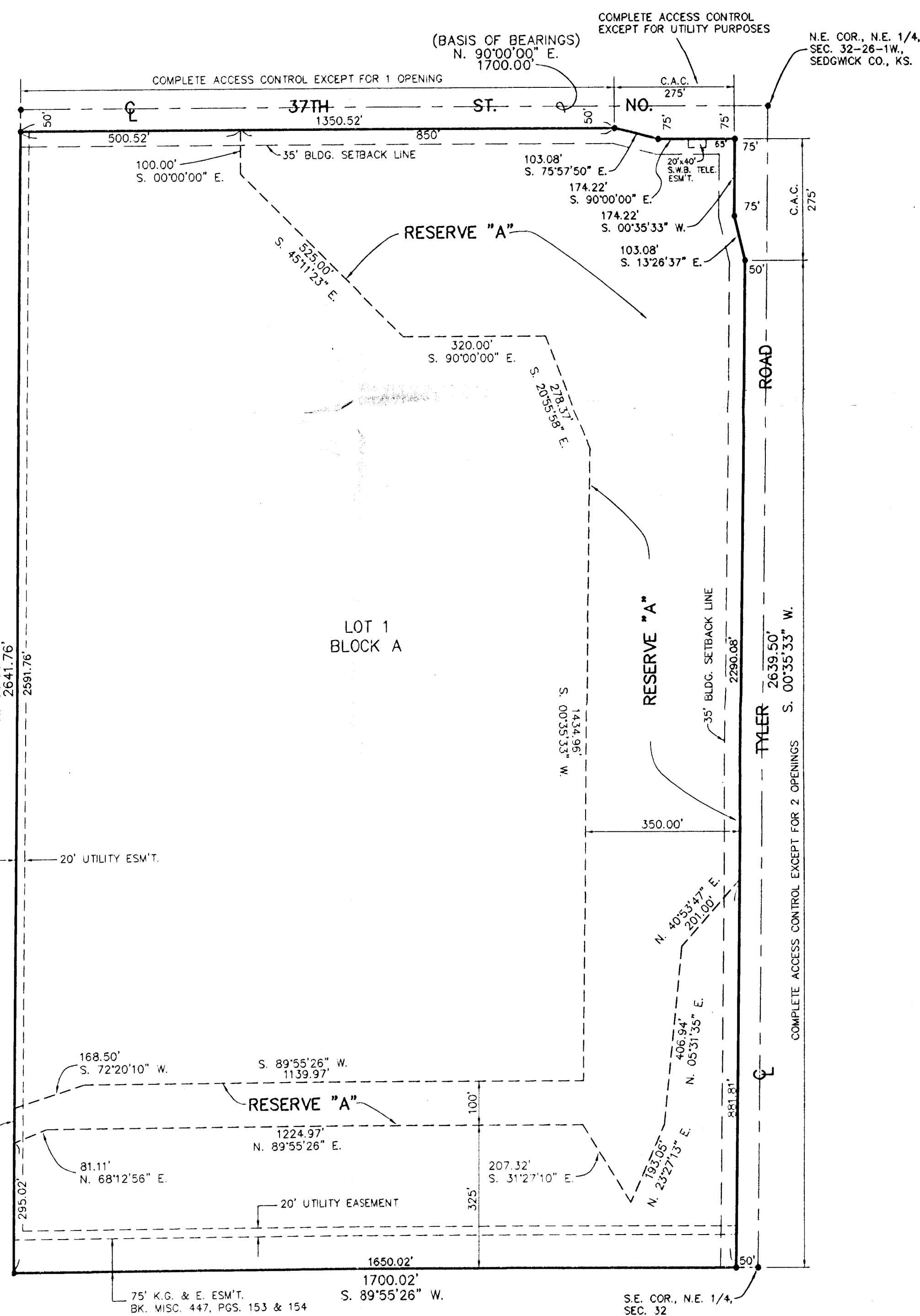




# CENTRAL MAIZE SCHOOLS ADDITION

Wichita, Sedgwick County, Kansas

DATE OF PREPARATION: AUGUST 8, 2001.  
 • = 3/4" IRON PIPE W/MOEHRING CAP (SET)  
 C.A.C. = COMPLETE ACCESS CONTROL

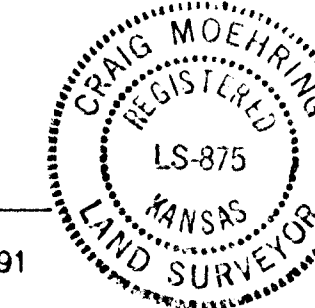


STATE OF KANSAS, COUNTY OF SEDGWICK, SS:

I, CRAIG MOEHRING, A REGISTERED LAND SURVEYOR IN SAID STATE AND COUNTY, DO HEREBY CERTIFY THAT I HAVE SURVEYED AND PLATTED "CENTRAL MAIZE SCHOOLS ADDITION", WICHITA, SEDGWICK COUNTY, KANSAS, INTO A LOT, A BLOCK, A STREET, A ROAD AND A RESERVE, THE SAME BEING ACCURATELY SET FORTH ON THE ACCOMPANYING PLAT AND DESCRIBED AS THE EAST 1700.00 FEET OF THE N.E. 1/4 OF SECTION 32, TOWNSHIP 26 SOUTH, RANGE 1 WEST OF THE 6TH P.M., SEDGWICK COUNTY, KANSAS.

*Craig Moehring*  
 CRAIG MOEHRING  
 433 S. HYDRAULIC WICHITA, KANSAS 67211

L.S. KANSAS #875  
 PH. (316) 263-8291



THIS PLAT OF "CENTRAL MAIZE SCHOOLS ADDITION", SEDGWICK COUNTY, KANSAS, HAS BEEN SUBMITTED TO AND APPROVED BY THE WICHITA-SEDGWICK COUNTY METROPOLITAN PLANNING COMMISSION.

DATED THIS \_\_\_\_\_ DAY OF \_\_\_\_\_, 2002.

WICHITA-SEDGWICK COUNTY METROPOLITAN AREA PLANNING COMMISSION

BERNARD A. HENTZEN, CHAIR

MICHAEL E. LINDEBAK, SECRETARY

THIS PLAT HAS BEEN APPROVED AND ALL DEDICATIONS SHOWN HEREON, IF ANY, ACCEPTED BY THE CITY OF WICHITA, KANSAS, THIS \_\_\_\_\_ DAY OF \_\_\_\_\_, 2002.

AT THE DIRECTION OF THE CITY COUNCIL

CHRIS CHERCHES, CITY MANAGER

PAT BURNETT, CITY CLERK

KNOW ALL MEN BY THESE PRESENTS THAT WE THE UNDERSIGNED, OWNERS OF THE LAND AS ABOVE SET FORTH IN THE SURVEYOR'S CERTIFICATE, HAVE CAUSED THE SAME TO BE SURVEYED AND PLATTED INTO A LOT, A BLOCK, A STREET, A ROAD AND A RESERVE TO BE KNOWN AS "CENTRAL MAIZE SCHOOLS ADDITION", WICHITA, SEDGWICK COUNTY, KANSAS. THE STREETS AND ROADS ARE HEREBY DEDICATED TO AND FOR THE USE OF THE PUBLIC. EASEMENTS FOR THE CONSTRUCTION AND MAINTENANCE OF PUBLIC UTILITIES ARE HEREBY GRANTED. RESERVE "A" SHALL BE FOR DRAINAGE PURPOSES AND FOR UTILITIES CONFINED TO EASEMENTS. THE RESERVE SHALL BE THE RESPONSIBILITY OF THE OWNER OF LOT 1, BLOCK A, UNTIL SUCH TIME AS THE GOVERNING BODY EXERCISING JURISDICTION ELECTS TO ASSUME THE RESPONSIBILITY FOR THE MAINTENANCE AND IMPROVEMENT OF DRAINAGE. THE GOVERNING BODY SHALL HAVE THE AUTHORITY TO MAINTAIN THE RESERVE IN THE EVENT THE OWNER FAILS TO DO SO. THE COST OF SUCH MAINTENANCE TO BE CHARGED BACK TO THE OWNER BY THE GOVERNING BODY. NO STRUCTURES SHALL BE CONSTRUCTED ON OR WITHIN SAID RESERVE NOR SHALL ANY FILL, CHANGE OF GRADE, CREATION OF CHANNEL OR OTHER WORK BE CARRIED ON WITHOUT THE PERMISSION OF THE ENGINEER OF THE APPROPRIATE GOVERNING BODY. A DRAINAGE PLAN HAS BEEN DEVELOPED FOR THIS PLAT AND ALL EASEMENTS, RIGHTS-OF-WAY, OR RESERVES SHALL REMAIN AT ESTABLISHED GRADES OR AS MODIFIED WITH THE APPROVAL OF THE APPLICABLE CITY OR COUNTY ENGINEER, AND UNOBSTRUCTED TO ALLOW FOR THE CONVEYANCE OF STORMWATER. ALL ABUTTER'S RIGHTS OF ACCESS TO AND FROM 37TH STREET NORTH AND TYLER ROAD ARE HEREBY GRANTED TO THE APPROPRIATE GOVERNING BODY, PROVIDED HOWEVER, THAT LOT 1, BLOCK A, SHALL HAVE ACCESS TO 37TH STREET NORTH AT ONE (1) LOCATION AND THAT LOT 1, BLOCK A, SHALL HAVE ACCESS TO TYLER ROAD AT TWO (2) LOCATIONS TO BE DETERMINED BY THE ENGINEER OF THE APPROPRIATE GOVERNING BODY, AND PROVIDED THAT LOT 1, BLOCK A, SHALL HAVE ACCESS FOR UTILITY PURPOSES TO 37TH STREET NORTH AT ONE (1) LOCATION.

MAIZE UNIFIED SCHOOL DISTRICT # 266

*John Frazee*  
 JOHN FRAZEE, PRESIDENT  
*Robin Brown*  
 ROBIN BROWN, CLERK

STATE OF KANSAS, COUNTY OF SEDGWICK, SS:

BE IT REMEMBERED THAT ON THIS 17 DAY OF April, 2002, BEFORE ME, A NOTARY PUBLIC IN AND FOR SAID STATE AND COUNTY, CAME UNIFIED SCHOOL DISTRICT # 266, MAIZE, KANSAS BY RICHARD STIVERSON, PRESIDENT, AND ROBIN BROWN, CLERK, ON BEHALF OF THE SCHOOL DISTRICT, TO ME PERSONALLY KNOWN TO BE THE SAME PERSONS WHO EXECUTED THE FOREGOING INSTRUMENT OF WRITING AND DULY ACKNOWLEDGED THE EXECUTION OF THE SAME ON BEHALF OF AND AS THE ACT AND DEED OF SAID SCHOOL DISTRICT. IN TESTIMONY WHEREOF I HAVE SET MY HAND AND AFFIXED MY SEAL THE DAY AND YEAR ABOVE WRITTEN.

*Vickie Bolton*  
 VICKIE BOLTON, NOTARY PUBLIC  
 My Comm. Exp. 10-11-2003

MY COMMISSION EXPIRES 10-11-2003

STATE OF KANSAS, COUNTY OF SEDGWICK, SS:

THIS IS TO CERTIFY THAT THIS INSTRUMENT WAS FILED FOR RECORD IN THE REGISTER OF DEEDS OFFICE AT \_\_\_\_\_ ON THE \_\_\_\_\_ DAY OF \_\_\_\_\_, 2002.

BILL MEEK, REGISTER OF DEEDS

LINDA KIZZIRE, DEPUTY

ENTERED ON TRANSFER RECORD THIS \_\_\_\_\_ DAY OF \_\_\_\_\_, 2002.

DON BRACE, COUNTY CLERK

Reviewed in accordance with K.S.A. 58-2005 on this 16th day of April, 2002.

*Tricia L. Robello*  
 Tricia L. Robello, L.S. # 1246  
 Deputy County Surveyor  
 Sedgwick County, Kansas.