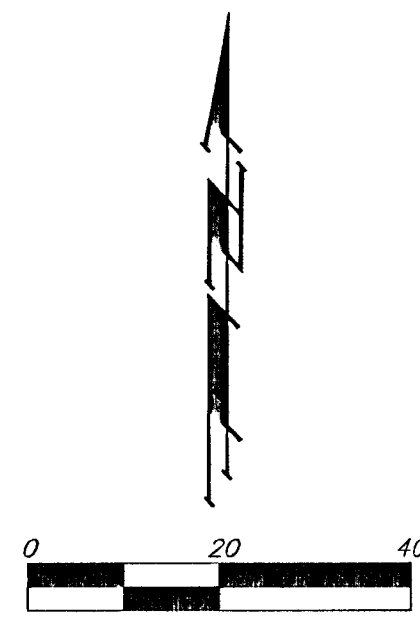
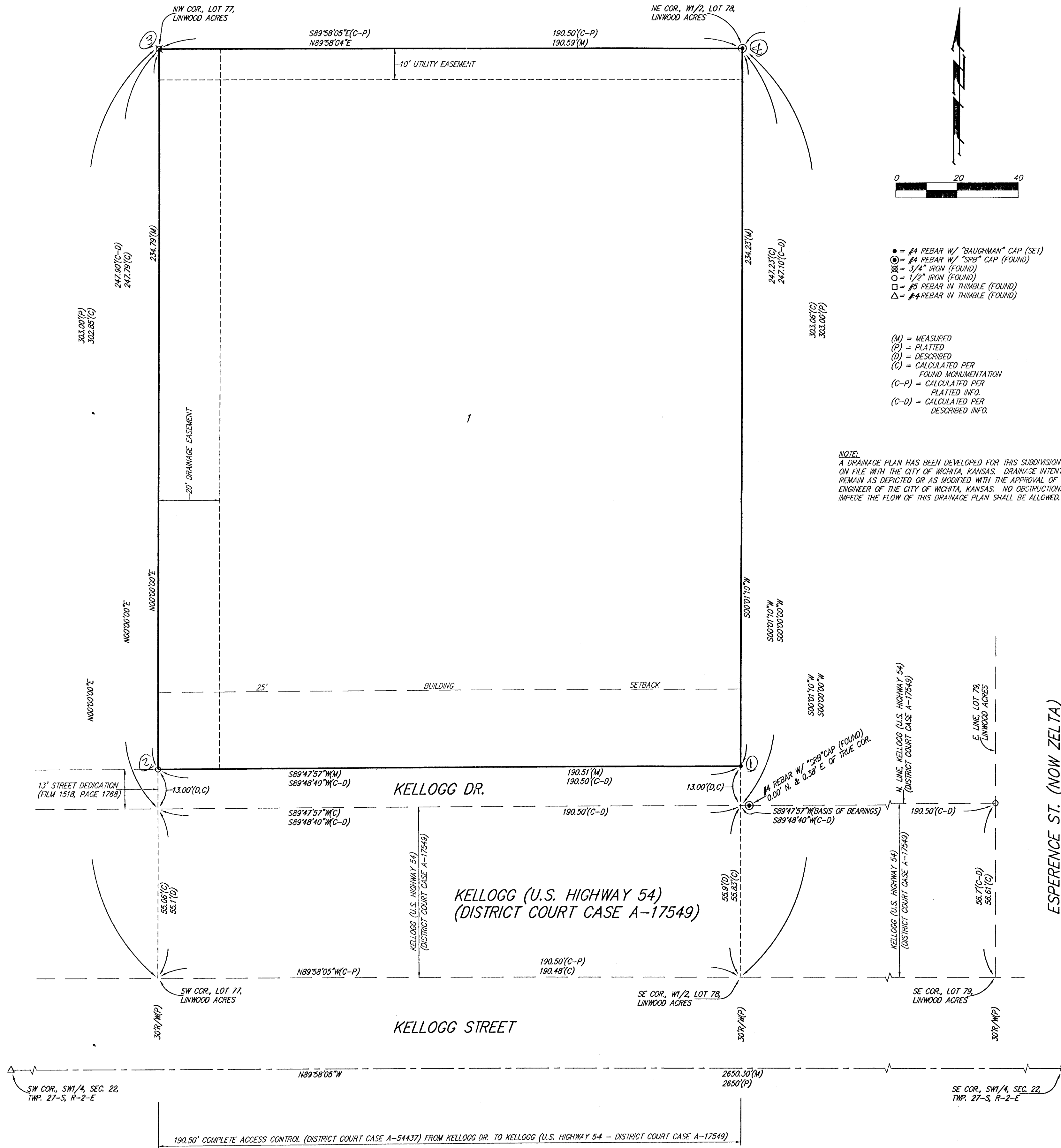


C. J. J. 2ND ADDITION WICHITA, SEDGWICK COUNTY, KANSAS



- = #4 REBAR W/ "BAUGHMAN" CAP (SET)
 - = #4 REBAR W/ "SPT" CAP (FOUND)
 - ⊗ = 3/4" IRON (FOUND)
 - = 1/2" IRON (FOUND)
 - = #5 REBAR IN TRIMBLE (FOUND)
 - △ = #4 REBAR IN TRIMBLE (FOUND)
- (M) = MEASURED
(P) = PLATTED
(D) = DESCRIBED
(C) = CALCULATED PER FOUND MONUMENTATION
(C-P) = CALCULATED PER PLATTED INFO.
(C-D) = CALCULATED PER DESCRIBED INFO.

NOTE:
A DRAINAGE PLAN HAS BEEN DEVELOPED FOR THIS SUBDIVISION AND IS ON FILE WITH THE CITY OF WICHITA, KANSAS. DRAINAGE INTENT SHALL REMAIN AS DEPICTED OR AS MODIFIED WITH THE APPROVAL OF THE CITY ENGINEER OF THE CITY OF WICHITA, KANSAS. NO OBSTRUCTIONS WHICH IMPEDE THE FLOW OF THIS DRAINAGE PLAN SHALL BE ALLOWED.

State of Kansas) SS We, Baughman Company, P.A., Surveyors in Sedgwick County do hereby certify that we have surveyed and platted "C.J.J. 2ND ADDITION", Wichita, Sedgwick County, Kansas and that the accompanying plat is a true and correct exhibit of the property surveyed, described as and being a replat of Lot 77, together with the west half of Lot 78, Linwood Acres, Sedgwick County, Kansas, EXCEPT that part that part condemned for highway in District Court Case A-17549.

Existing easements and dedications being vacated by virtue of K.S.A. 12-512(b).

All being situated in the SW 1/4 of Sec. 22, Twp. 27-S, R-2-E of the 6th P.M., Sedgwick County, Kansas.

Baughman Company, P.A.

This plat of "C.J.J. 2ND ADDITION", Wichita, Sedgwick County, Kansas has been submitted to and approved by the Wichita-Sedgwick County Metropolitan Area Planning Commission, Wichita, Kansas.

Dated this _____ day of _____, Wichita-Sedgwick County Metropolitan Area Planning Commission

_____, Chairman
Francis S. Garofalo

_____, Secretary
Marvin S. Krout

Michael G. Conrey
Michael G. Conrey, Surveyor
13-971110-2000

This plat approved and all dedications shown herein accepted by the City Council of the City of Wichita, Kansas, this _____ day of _____.

_____, Mayor
Bob Knight

_____, City Clerk
Pat Burnett

Know all men by these presents that we, the undersigned, have caused the land in the surveyors certificate to be platted into a Lot and a Street, to be known as "C.J.J. 2ND ADDITION", Wichita, Sedgwick County, Kansas. The utility easement is hereby granted as indicated for the construction and maintenance of all public utilities. The drainage easement is hereby granted as indicated for drainage purposes. The street is hereby dedicated to and for the use of the public. All abutters rights of access to or from Kellogg Street, (U.S. Highway 54) over across the south line of Kellogg Drive are hereby granted to the City of Wichita, Kansas.

Reviewed in accordance with K.S.A. 58-2005 on this _____ day of _____.

Tricia L. Robello, L.S. #1246
Deputy County Surveyor
Sedgwick County, Kansas

Larnard E. Smith *Eva Ilean Smith*
Larnard E. Smith Eva Ilean Smith

Entered on transfer record this _____ day of _____.

_____, County Clerk
James Alford

State of Kansas) SS This is to certify that this plat has been filed for record in the office of the Register of Deeds, this _____ day of _____, at _____ o'clock _____ M.; and is duly recorded.

_____, Register of Deeds
Bill Meek

State of Kansas) SS The foregoing instrument acknowledged before me, this 27th day of NOVEMBER, 2000, by Larnard E. Smith and Eva Ilean Smith, husband and wife.

Susan K. Monette
Susan K. Monette, Notary Public

My App't. Exp. 11-9-03



_____, Deputy
Linda Kizzire