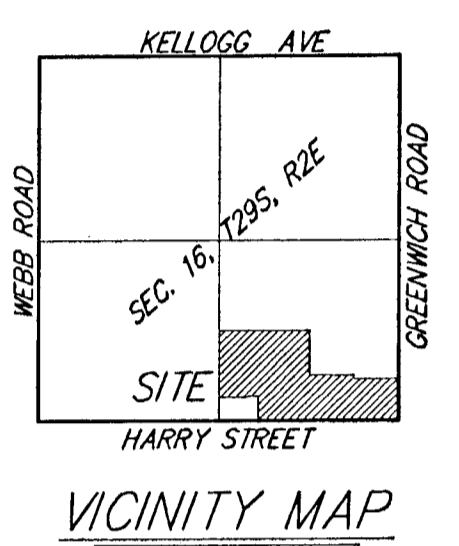
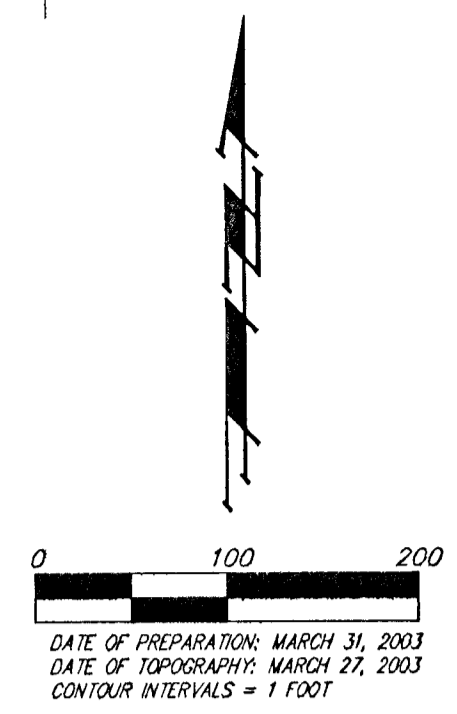


UTILITY CONCEPT

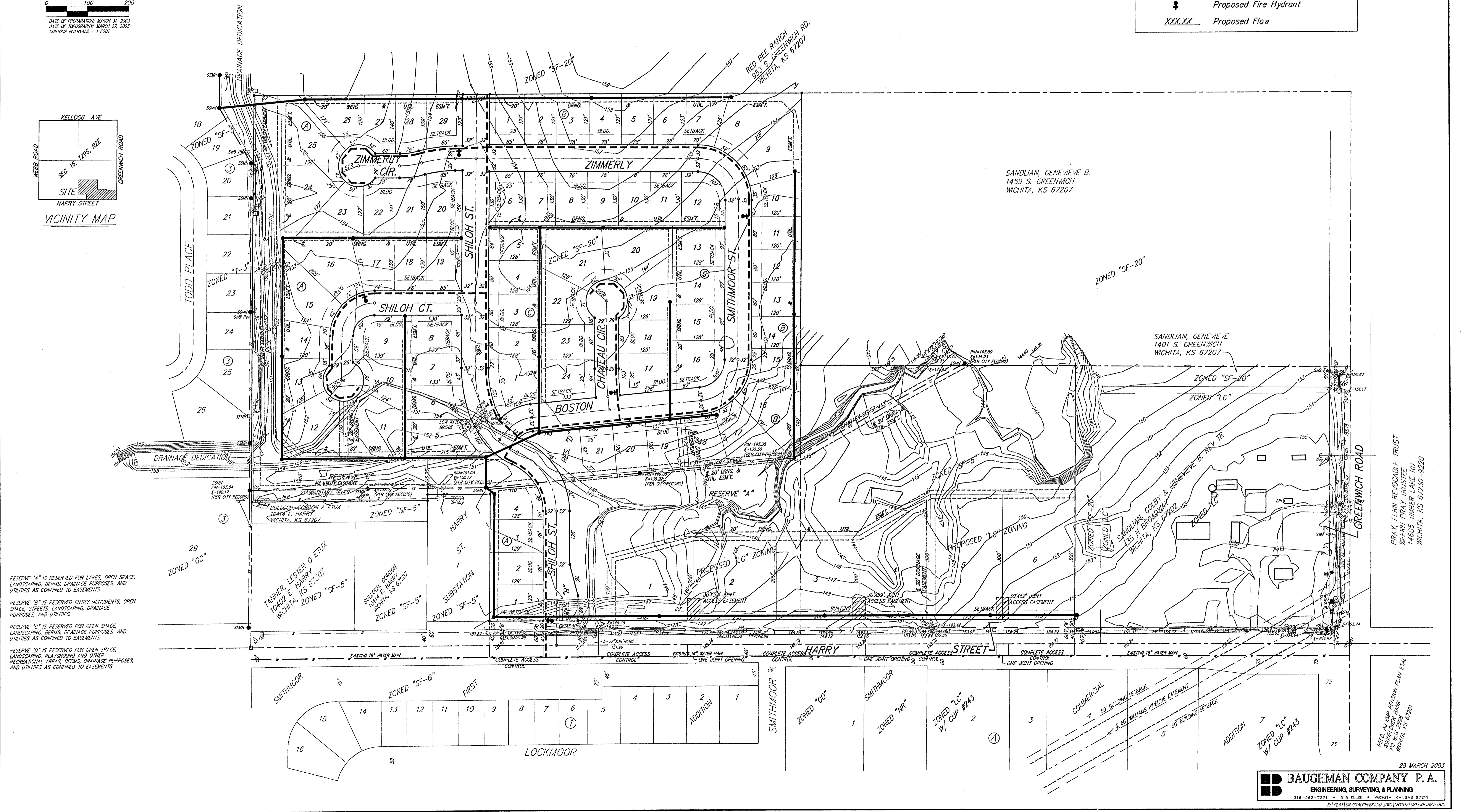
CRYSTAL CREEK ADDITION

WICHITA, SEDGWICK COUNTY, KANSAS



LEGEND

- - - - -	Proposed Water Line (8" Unless Noted Otherwise)
—————	Proposed Sanitary Sewer Line (8" Unless Noted Otherwise)
•	Proposed Sanitary Sewer Manhole
⊕	Proposed Fire Hydrant
XXX.XX	Proposed Flow



RESERVE "A" IS RESERVED FOR LAKES, OPEN SPACE, LANDSCAPING, BERMS, DRAINAGE PURPOSES, AND UTILITIES AS CONFINED TO EASEMENTS.

RESERVE "B" IS RESERVED ENTRY MONUMENTS, OPEN SPACE, STREETS, LANDSCAPING, DRAINAGE PURPOSES, AND UTILITIES.

RESERVE "C" IS RESERVED FOR OPEN SPACE, LANDSCAPING, BERMS, DRAINAGE PURPOSES, AND UTILITIES AS CONFINED TO EASEMENTS.

RESERVE "D" IS RESERVED FOR OPEN SPACE, LANDSCAPING, PLAYGROUND AND OTHER RECREATIONAL AREAS, BERMS, DRAINAGE PURPOSES, AND UTILITIES AS CONFINED TO EASEMENTS.