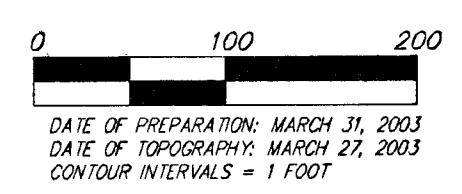


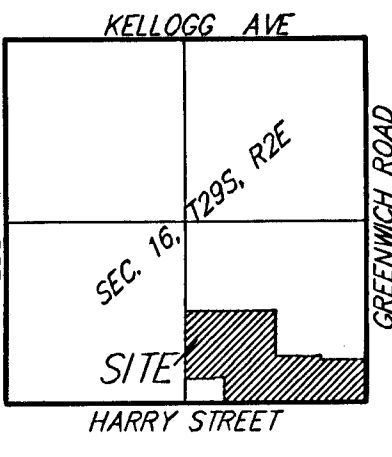
PRELIMINARY PLAT
CRYSTAL CREEK ADDITION
 WICHITA, SEDGWICK COUNTY, KANSAS



DATE OF PREPARATION: MARCH 31, 2003
 DATE OF TOPOGRAPHY: MARCH 23, 2003
 CONTOUR INTERVALS: 1' TO 2'

* = #4 REBAR W/ "BAUGHMAN" CAP (FOUND)
 * = #4 REBAR W/ "BAUGHMAN" CAP (SET)
 * = #4 REBAR W/ "TILSI" CAP (FOUND)
 * = #4 REBAR W/ "TILSI" CAP (SET)
 * = 1" IRON (FOUND)
 * = 1/2" IRON (FOUND)
 * = 1/2" IRON IN THIMBLE (FOUND)

(M) = MEASURED
 (D) = DESCRIBED
 (P) = PLATTED
 (C) = CALCULATED



- OP = Cable TV Pedestal
- OR = Gas Meter
- OS = Guard Post (Ballard)
- OA = Guy Anchor
- HL = High Line Pole
- LP = Light Pole
- MB = Mail Box
- PM = Pipeline Marker
- SM = Survey Marker
- PP = Power Pole
- SP = Signal Pole
- SS = Sign
- SSM = Sanitary Sewer Manhole
- SSM PWD = Southwestern Bell Pedestal
- SSM SW = Stormwater Sewer Manhole
- TR = Traffic Box
- TM = Traffic Manhole
- WM = Water Meter
- WV = Water Valve
- TRM = Transformer

CONTRACT PURCHASER/DEVELOPER:
 Russell Development
 17100 Jay Russell
 12602 W. 13th Street
 Wichita, KS 67235
 316-722-2417

LEGAL DESCRIPTION:
 The SW 1/4 of the SE 1/4 of the SE 1/4 of Sec. 28, Twp. 27-S, R-2-E of the 6th P.M., Sedgwick County, Kansas, TOGETHER WITH the SW 1/4 of the SE 1/4 of the said Sec. 28, EXCEPT the south 341.33 feet of the west 424.30 feet thereof, and EXCEPT that part platted as Harry St. Substation, Sedgwick County, Kansas.

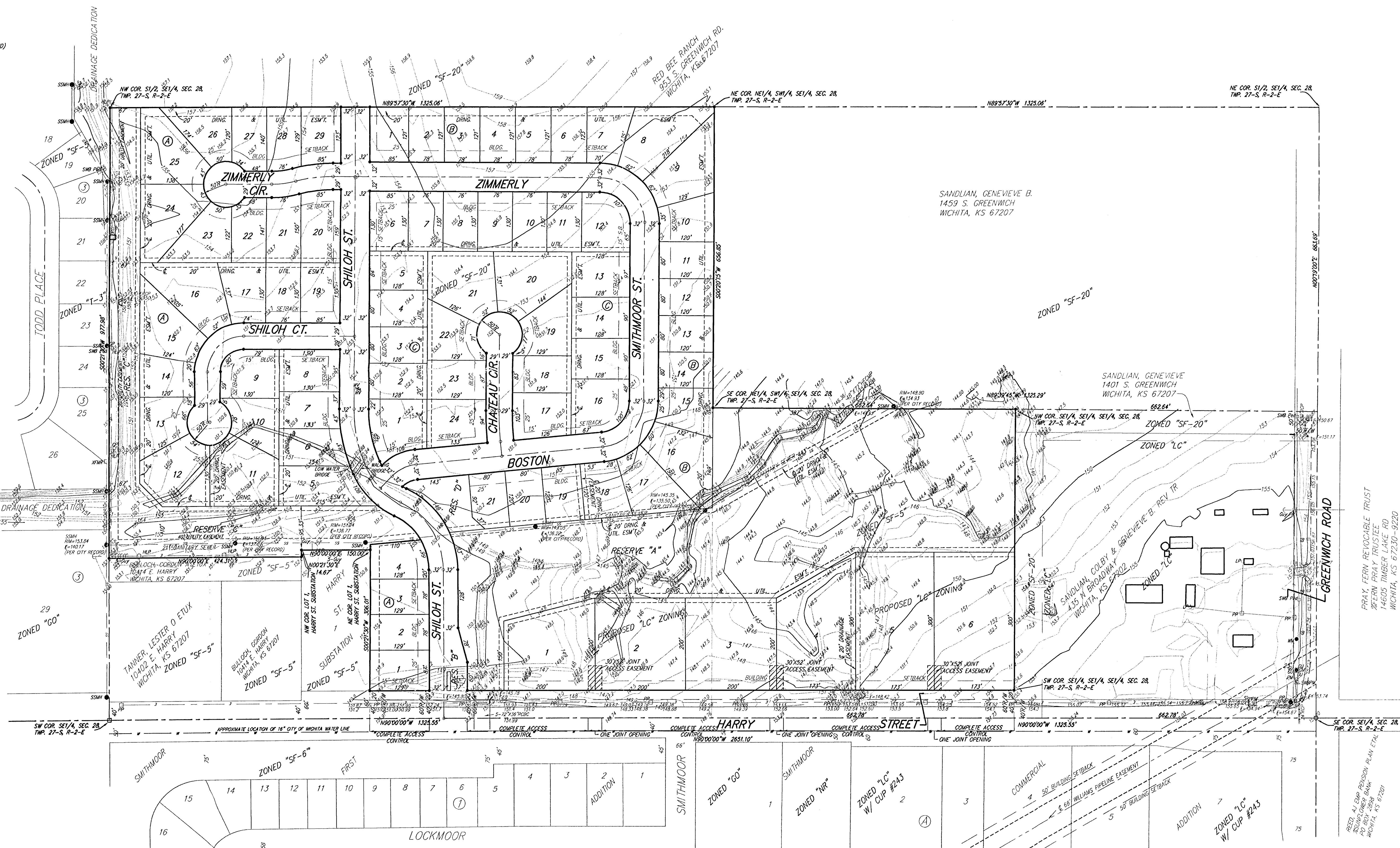
BENCHMARK:
 COW Benchmark 400'± north of Harry on Todd Street, northeast corner of RCBC.
 Elevation = 157.34 City Datum (1344.64 NGVD29)

RESERVE "A" IS RESERVED FOR LAKES, OPEN SPACE, LANDSCAPING, BERMS, DRAINAGE PURPOSES, AND UTILITIES AS CONFIRMED TO EASEMENTS.

RESERVE "B" IS RESERVED ENTRY MONUMENTS, OPEN SPACE, STREETS, LANDSCAPING, DRAINAGE PURPOSES, AND UTILITIES.

RESERVE "C" IS RESERVED FOR OPEN SPACE, LANDSCAPING, BERMS, DRAINAGE PURPOSES, AND UTILITIES AS CONFIRMED TO EASEMENTS.

RESERVE "D" IS RESERVED FOR OPEN SPACE, LANDSCAPING, PLAYGROUND AND OTHER RECREATIONAL AREAS, BERMS, DRAINAGE PURPOSES, AND UTILITIES AS CONFIRMED TO EASEMENTS.



PRAY, FERN REVOCABLE TRUST
 FERN PRAY TRUSTEE
 14605 TIMBER LAKE RD
 WICHITA, KS 67230-9220

RED, A, EMP REVOCABLE TRUST
 AUSTIN OBER BARR
 WICHITA, KS 67201