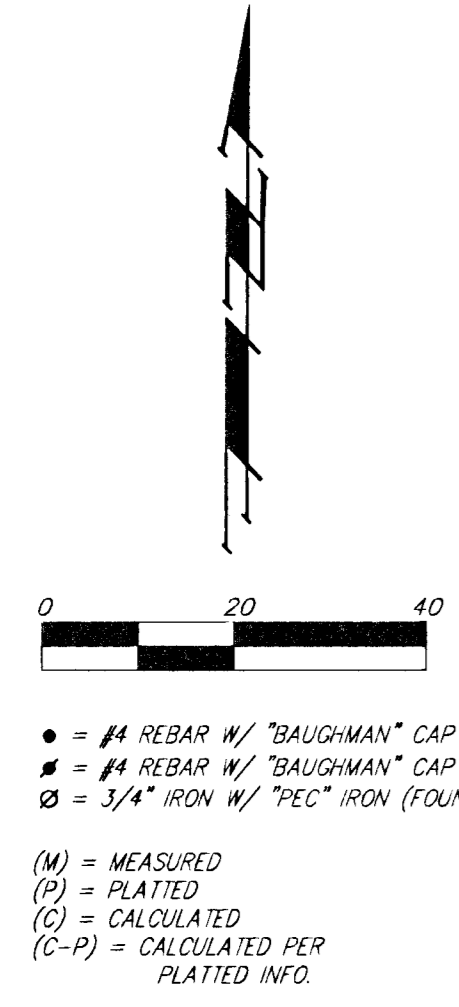


CORPORATE LAKES 3RD

AN ADDITION TO WICHITA, SEDGWICK COUNTY, KANSAS



LOT	ELEVATION	
	CITY DATUM	MSL
1	170.0	1357.4

BENCHMARK
 WEBB ROAD & CENTRAL - CITY OF WICHITA
 BENCHMARK DISC, SW COR. R.C.B.C., 200'± N. OF
 CENTRAL 34.4' N. OF H.L.P. ON WEST SIDE OF
 WEBB ROAD, 40.41' W. OF BACK OF CURB ON
 E. MEDIAN CURB ON WEBB ROAD.
 ELEV. = 174.73 CITY DATUM

NOTE:
 ADDITIONAL BUILDING SETBACKS PER C.U.P. DP-190
 ON FILE AT THE WICHITA-SEDGWICK COUNTY
 METROPOLITAN AREA PLANNING DEPARTMENT.

NOTE:
 WILLIAMS NATURAL GAS COMPANY PIPELINE
 SETBACK REQUIREMENT PER FILM 918, PAGE 396.

NOTE:
 WILLIAMS NATURAL GAS COMPANY PIPELINE
 SETBACK REQUIREMENT PER FILM 1090, PAGE 1151.

• = #4 REBAR W/ "BAUGHMAN" CAP (SET)
 * = #4 REBAR W/ "BAUGHMAN" CAP (FOUND)
 ○ = 3/4" IRON W/ "PEC" IRON (FOUND)

(M) = MEASURED
 (P) = PLATTED
 (C) = CALCULATED
 (C-P) = CALCULATED PER
 PLATTED INFO.

State of Kansas) SS
 Sedgwick County) We, Baughman Company, P.A. Surveyors in
 aforesaid County and State do hereby certify that we have surveyed and
 platted "CORPORATE LAKES 3RD", an Addition to Wichita, Sedgwick County,
 Kansas and that the accompanying plat is a true and correct exhibit of
 the property surveyed, described as and being replat of Lots 1, 2, 3, 4, 5,
 and Reserve A, in Corporate Lakes 2nd, an Addition to Wichita, Sedgwick
 County, Kansas.

This plat of "CORPORATE LAKES 3RD", an
 Addition to Wichita, Sedgwick County, Kansas has been submitted to
 and approved by the Wichita-Sedgwick County Metropolitan Area
 Planning Commission, Wichita, Kansas.
 Dated this _____ day of _____, 1998.
 Wichita-Sedgwick County Metropolitan Area Planning Commission

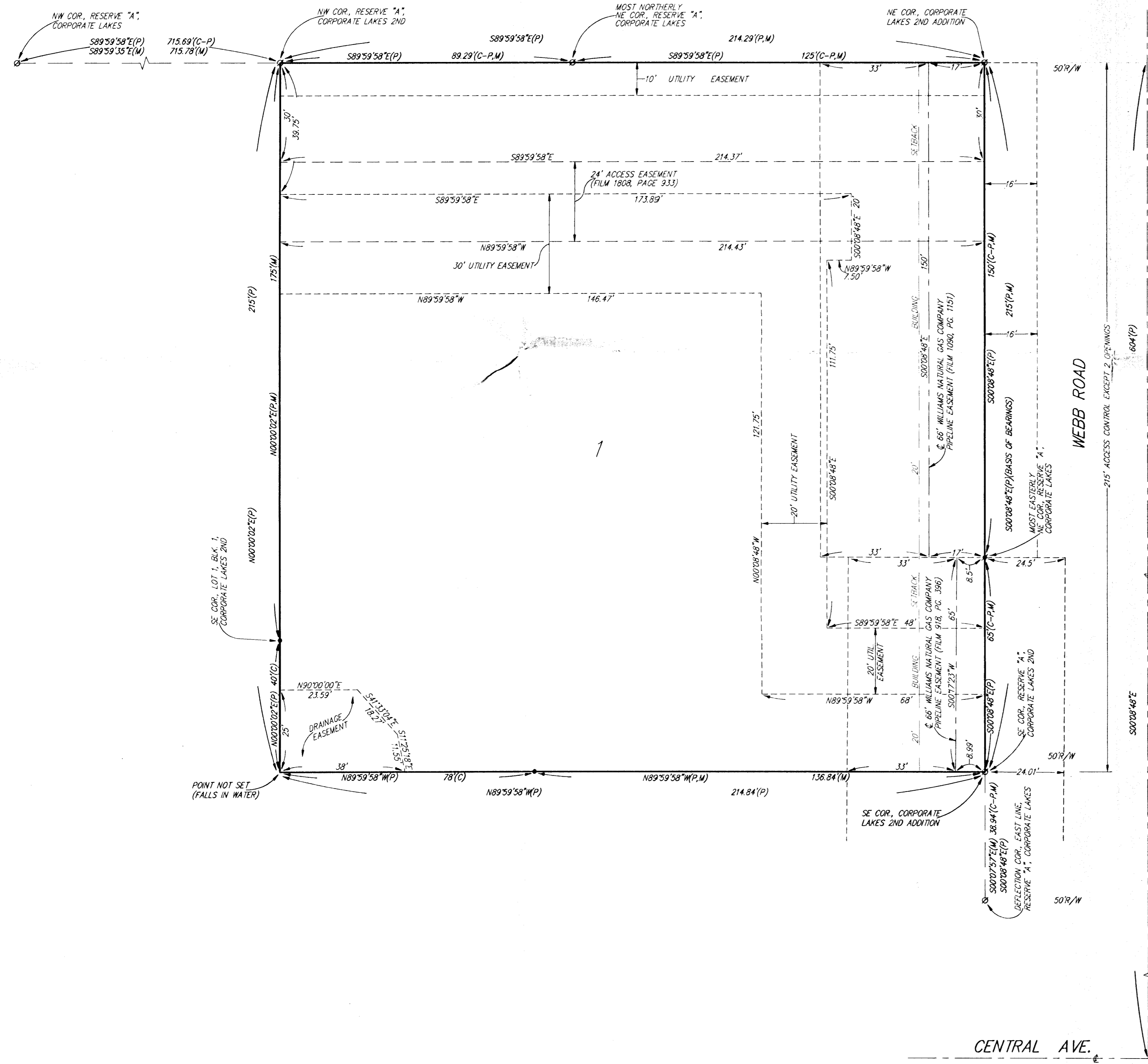
All being situated in the SE1/4 of Sec. 17, Twp. 27-S,
 R-2-E of the 6th P.M., Sedgwick County, Kansas.

Existing public easements and dedications being vacated
 by virtue of K.S.A. 12-512(b).

Baughman Company, P.A.

_____, Chairman
 Richard E. Lopez

_____, Secretary
 Marvin S. Krout



Michael D. Conroy
 Michael G. Conroy, Surveyor

This plat approved and all dedications shown
 hereon accepted by the City Council of the City of Wichita, Kansas,
 this _____ day of _____, 1998.

_____, Mayor
 Bob Knight

_____, City Clerk
 Pat Burnett

Know all men by these presents that we,
 the undersigned, have caused the land in the surveyors certificate to be
 platted into a Lot to be known as "CORPORATE LAKES 3RD", an Addition
 to Wichita, Sedgwick County, Kansas. The utility easements are hereby
 granted as indicated for the construction and maintenance of all public
 utilities. The drainage easement is hereby granted as indicated for drainage
 purposes. All abutters rights of access to or from Webb Road over and
 across the east line of Lot 1 are hereby granted to the City of Wichita,
 Kansas provided, however, that said Lot 1 shall have access to Webb Road
 at two locations as shall be determined by the City Engineer of the City
 of Wichita, Kansas. The Minimum Building Pad Elevation for the lowest
 opening to the structures on Lot 1 shall be 170.0 City Datum (1357.4 M.S.L.).

National Bank of Andover, N.A.

Entered on transfer record this _____ day
 of _____, 1998.

_____, County Clerk
 James Alford

Dennis L. Bush
 Dennis L. Bush, President

State of Kansas) SS
 Sedgwick County) This is to certify that this plat has been
 filed for record in the office of the Register of Deeds, this _____ day
 of _____, 1998, at _____ o'clock _____ M.; and is duly recorded.

State of Kansas) SS
 Sedgwick County) The foregoing instrument acknowledged before
 me, this 4TH day of SEPTEMBER, 1998, by Dennis L. Bush, President
 of National Bank of Andover, N.A., on behalf of the bank.

_____, Register of Deeds
 Bill Meek

_____, Deputy
 Linda Kizzire

My App't. Exp. 11-7-2001
Judith M. Terhune
 JUDITH M. TERHUNE, Notary Public

