

CORNEJO EAST ADDITION

WICHITA, SEDGWICK COUNTY, KANSAS

State of Kansas) SS We, Baughman Company, P.A., Surveyors in Sedgwick County and state do hereby certify that we have surveyed and platted "CORNEJO EAST ADDITION", Wichita, Sedgwick County, Kansas and that the accompanying plat is a true and correct exhibit of the property surveyed, described as follows: That part of Lot 1, Block 1, Family Golf Center Addition, an addition to Wichita, Sedgwick County, Kansas and a tract in the NW 1/4 of the SW 1/4 of Sec. 16, Twp. 27-S, R-2-E of the 6th P.M., Sedgwick County, Kansas described as follows: The west 425.00 feet of the S 1/2 of the south 15 Acres of the NW 1/4 of the SW 1/4 of Sec. 16, Twp. 27-S, R-2-E of the 6th P.M., Sedgwick County, Kansas, all being subject to road rights-of-way of record.

Existing public easements and dedications being vacated by virtue of K.S.A. 12-512(b).

Baughman Company, P.A.

Know all men by these presents that we, the undersigned, have caused the land in the surveyors certificate to be platted into a Lot, a Block, and Streets, to be known as "CORNEJO EAST ADDITION", Wichita, Sedgwick County, Kansas. The drainage and utility easements are hereby granted as indicated for drainage purposes and for the construction and maintenance of all public utilities. The streets are hereby dedicated to and for the use of the public. Access controls shall be as depicted on the face of the plat and are hereby granted to the City of Wichita, Kansas. The permitted opening locations shall be as determined by the City Engineer of the City of Wichita, Kansas.

Triple J of Wichita, L.L.C.,
a Kansas limited liability company

Ronald J. Cornejo
Ronald J. Cornejo, Manager

State of Kansas) SS The foregoing instrument acknowledged before me, this 13th day of March, 2003, by Ronald J. Cornejo, Manager of Triple J of Wichita, L.L.C., a Kansas limited liability company, on behalf of the company.

Shel Porter
Shel Porter, Notary Public

My App't. Exp. 1-22-05

SHELL PORTER
Notary Public - State of Kansas
My App't. Expires 1-22-05

We the undersigned holders of a mortgage on the above described property, do hereby consent to this plat of "CORNEJO EAST ADDITION", Wichita, Sedgwick County, Kansas.

INTRUST Bank, N.A.

Paul A. Johnson
Paul A. Johnson, Vice President

State of Kansas) SS The foregoing instrument acknowledged before me, this 14th day of March, 2003, by Paul A. Johnson, Vice President of INTRUST Bank, N.A., on behalf of the bank.

JOLEEN BARNHART
Notary Public - State of Kansas
My App't. Expires 1/14/03

Joleen Barnhart
Joleen Barnhart, Notary Public

My App't. Exp. 1/14/03

This plat of "CORNEJO EAST ADDITION", Wichita, Sedgwick County, Kansas has been submitted to and approved by the Wichita-Sedgwick County Metropolitan Area Planning Commission, Wichita, Kansas.

Dated this _____ day of _____, 2003.
Wichita-Sedgwick County Metropolitan Area Planning Commission

Bernard A. Hentzen
Bernard A. Hentzen, Chair

Date Miller
Date Miller, Secretary

This plat approved and all dedications shown hereon accepted by the City Council of the City of Wichita, Kansas, this _____ day of _____, 2003.

At the direction of the City Council

Chris Cherches
Chris Cherches, City Manager

Pat Graves
Pat Graves, City Clerk

Reviewed in accordance with K.S.A. 58-2005 on this _____ day of _____, 2003.

Tricia L. Robello
Tricia L. Robello, L.S. #1246
Deputy County Surveyor
Sedgwick County, Kansas

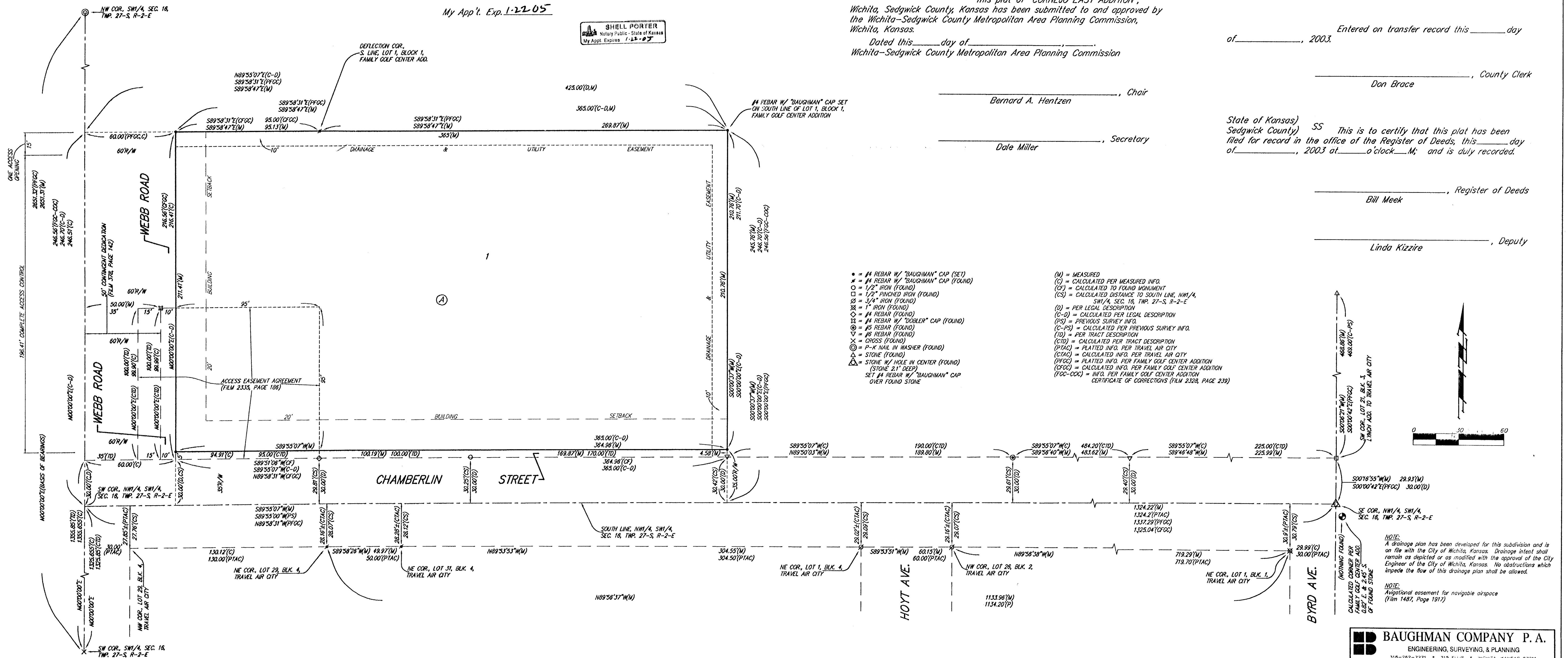
Entered on transfer record this _____ day of _____, 2003.

Don Brace
Don Brace, County Clerk

State of Kansas) SS This is to certify that this plat has been filed for record in the office of the Register of Deeds, this _____ day of _____, 2003 at _____ o'clock _____ M., and is duly recorded.

Bill Meek
Bill Meek, Register of Deeds

Linda Kizzire
Linda Kizzire, Deputy



BAUGHMAN COMPANY P.A.
ENGINEERING, SURVEYING, & PLANNING
316-269-7271 • 319 ELLIS • WICHITA, KANSAS 67211
P. PLAT CORNEJO EAST TO CORNEJO EAST