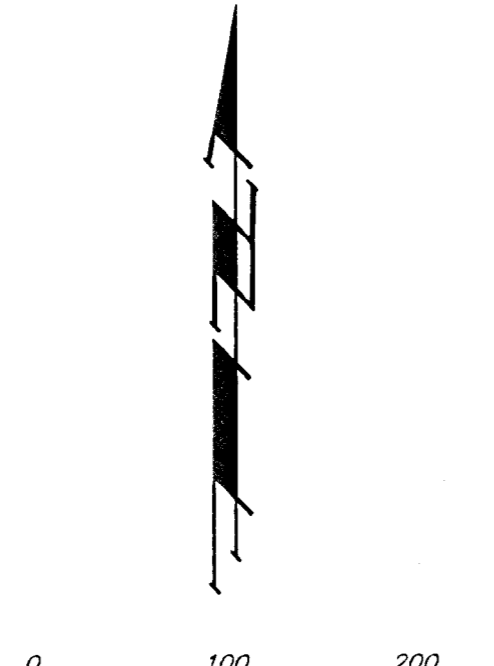
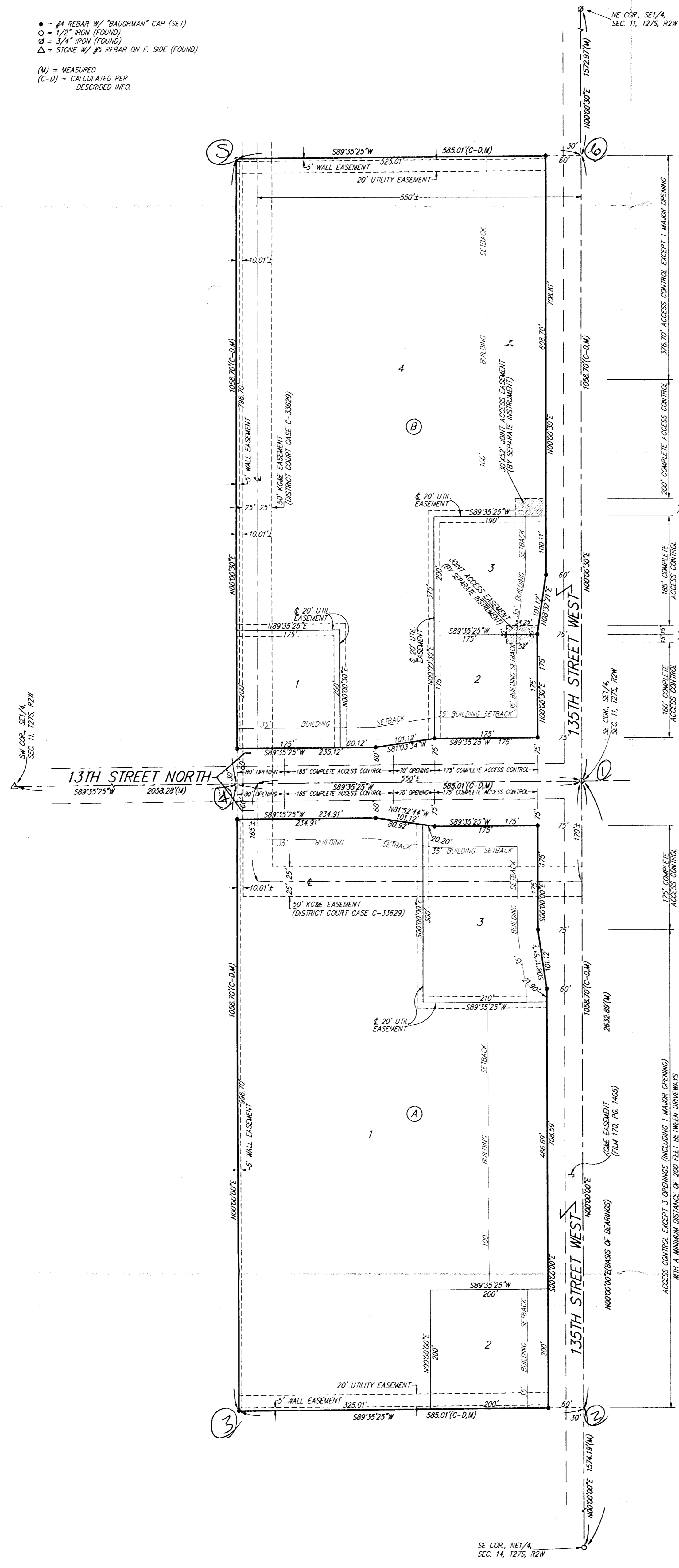


# COPPER GATE ADDITION

## SEDGWICK COUNTY, KANSAS



- = #4 REBAR W/ "BAUGHMAN" CAP (SET)
  - = 1/2" IRON (FOUND)
  - △ = 3/4" IRON (FOUND)
  - △ = STONE W/ #5 REBAR ON E. SIDE (FOUND)
- (M) = MEASURED  
(C-D) = CALCULATED PER DESCRIBED INFO.



NOTE:  
20' SEDGWICK COUNTY ELECTRIC COOPERATIVE ASSOCIATION, INC. EASEMENT IN PART OF THE SE 1/4 OF SEC. 11, TWP. 27-S, R-2-W (FILM 1772, PAGE 137) IS NOT SHOWN AS LOCATION OF SAID EASEMENT IS SUBJECT TO INTERPRETATION.

20' SEDGWICK COUNTY ELECTRIC COOPERATIVE ASSOCIATION, INC. EASEMENT IN PART OF THE NE 1/4 OF SEC. 14, TWP. 27-S, R-2-W (FILM 1528, PAGE 131) IS NOT SHOWN AS LOCATION OF SAID EASEMENT IS SUBJECT TO INTERPRETATION.

State of Kansas) SS We, Baughman Company, P.A., Surveyors in Sedgwick County) do hereby certify that we have surveyed and platted "COPPER GATE ADDITION", Sedgwick County, Kansas and that the accompanying plat is a true and correct exhibit of the property surveyed, described as follows: The east 585 feet of the south 1058.67 feet of the SE 1/4 of Sec. 11, Twp. 27-S, R-2-W of the 6th P.M., Sedgwick County, Kansas, together with the east 585 feet of the north 1058.67 feet of the NE 1/4 of Sec. 14, Twp. 27-S, R-2-W of the 6th P.M., Sedgwick County, Kansas.

Existing public easements and dedications being vacated by virtue of K.S.A. 12-512(b).  
Baughman Company, P.A.

*Michael G. Conroy*  
Michael G. Conroy, Surveyor

Know all men by these presents that we, the undersigned, have caused the land in the surveyors certificate to be platted into Lots, Blocks, and Streets to be known as "COPPER GATE ADDITION", Sedgwick County, Kansas. The utility easements are hereby granted as indicated for the construction and maintenance of all public utilities. The wall easements are hereby granted as indicated for the construction and maintenance of a private wall and utility main lines and service lines shall be allowed to cross these easements. The streets are hereby dedicated to and for the use of the public. All abutting rights of access to or from 135th Street West and to or from 13th Street North shall be as indicated on the face of the plat and all opening locations shall be determined by the City Engineer of the City of Wichita, Kansas.

*John E. Dugan*      *Marilyn K. Dugan*  
John E. Dugan      Marilyn K. Dugan

John E. Dugan Family Partnership, L.P.,  
a Kansas limited partnership

*John E. Dugan*, Partner  
John E. Dugan

State of Kansas) SS The foregoing instrument acknowledged before me, this 21<sup>st</sup> day of October, 1998, by John E. Dugan and Marilyn K. Dugan, husband and wife.

*Judith M. Terhune* Notary Public  
My App't. Exp. 11-7-2001

State of Kansas) SS The foregoing instrument acknowledged before me, this 21<sup>st</sup> day of October, 1998, by John E. Dugan, Partner of John E. Dugan Family Partnership, L.P., a Kansas limited partnership, on behalf of the partnership.

*Judith M. Terhune* Notary Public  
My App't. Exp. 11-7-2001

This plat of "COPPER GATE ADDITION", Sedgwick County, Kansas has been submitted to and approved by the Wichita-Sedgwick County Metropolitan Area Planning Commission, Wichita, Kansas.  
Dated this \_\_\_\_\_ day of \_\_\_\_\_, 1998.  
Wichita-Sedgwick County Metropolitan Area Planning Commission

\_\_\_\_\_, Chairman  
*Richard E. Lopez*

\_\_\_\_\_, Secretary  
*Marvin S. Krout*

This plat approved and all dedications shown hereon accepted by the City Council of the City of Wichita, Kansas, this \_\_\_\_\_ day of \_\_\_\_\_, 1998.

\_\_\_\_\_, Mayor  
*Bob Knight*

\_\_\_\_\_, City Clerk  
*Pat Burnett*

This plat approved and all dedications shown hereon accepted by the Board of Commissioners of Sedgwick County, Kansas, this \_\_\_\_\_ day of \_\_\_\_\_, 1998.

\_\_\_\_\_, Chairman  
*Mark F. Schroeder*

\_\_\_\_\_, Chair Pro-Tem  
*Paul W. Hancock*

\_\_\_\_\_, Commissioner  
*Betsy Gwin*

\_\_\_\_\_, Commissioner  
*Thomas G. Winters*

\_\_\_\_\_, Commissioner  
*Melody C. Miller*

\_\_\_\_\_, County Clerk  
*James Alford*

Entered on transfer record this \_\_\_\_\_ day of \_\_\_\_\_, 1998.

\_\_\_\_\_, County Clerk  
*James Alford*

State of Kansas) SS This is to certify that this plat has been filed for record in the office of the Register of Deeds, this \_\_\_\_\_ day of \_\_\_\_\_, 1998, at \_\_\_\_\_ o'clock \_\_\_\_\_ M., and is duly recorded.

\_\_\_\_\_, Register of Deeds  
*Bill Meek*

\_\_\_\_\_, Deputy  
*Linda Kizzire*