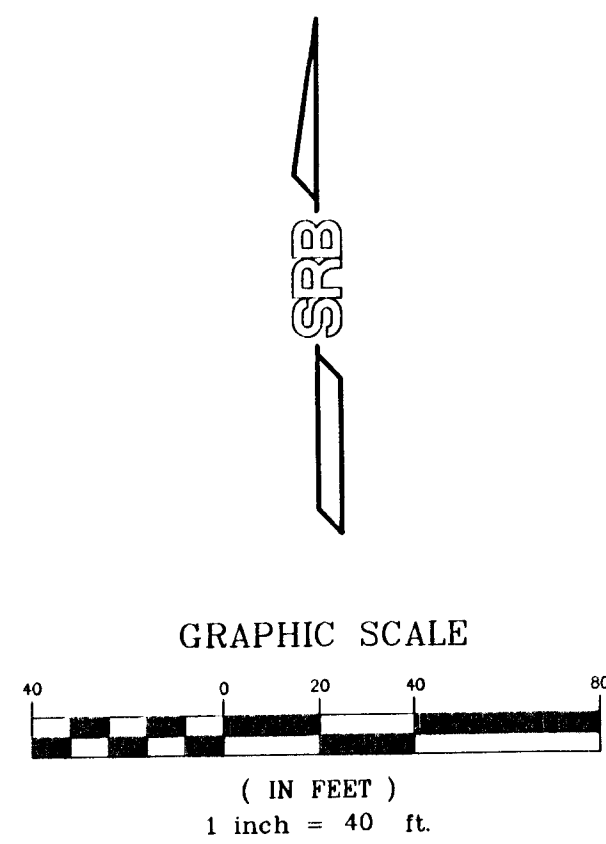
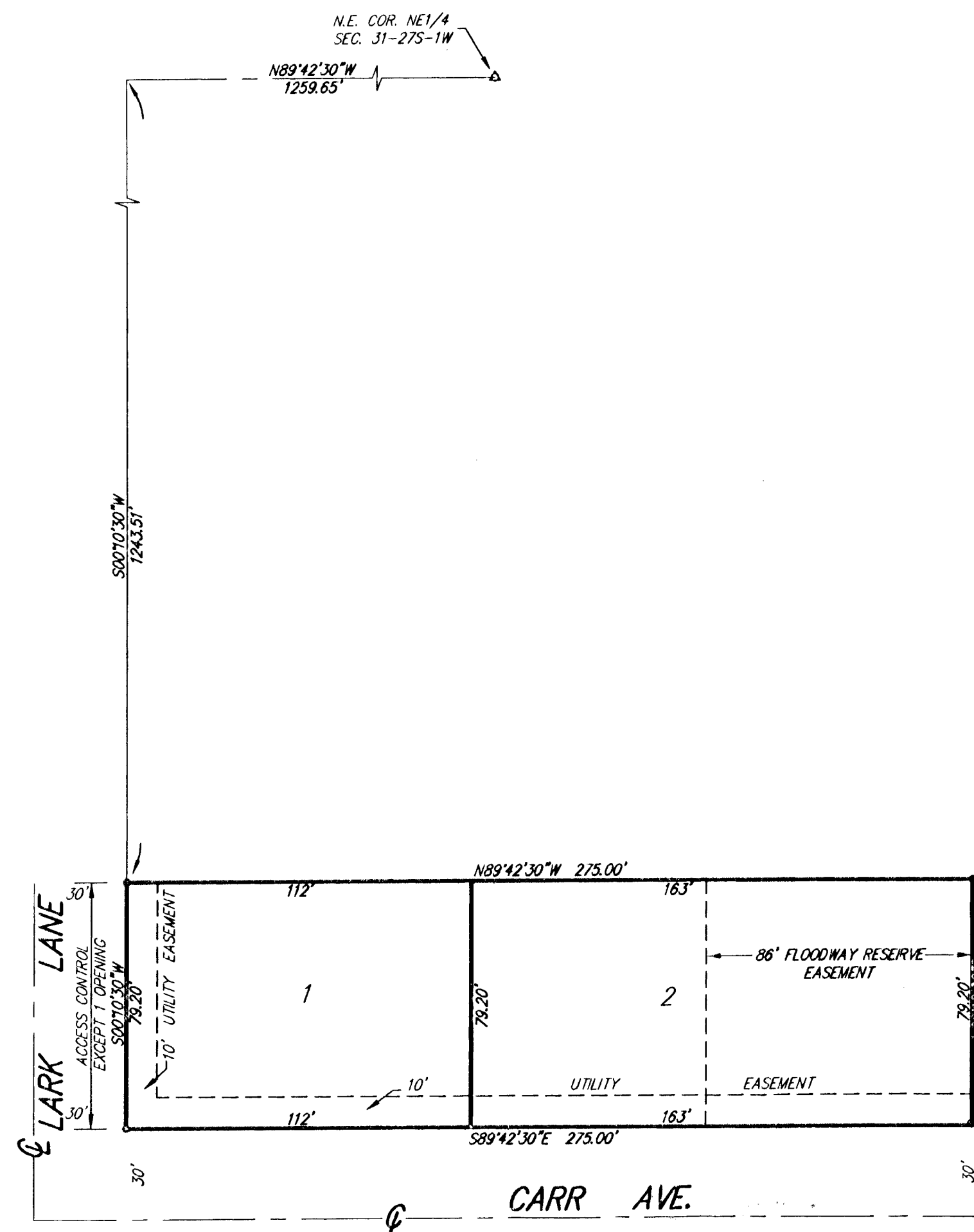


# COLLINS FIRST ADDITION

WICHITA, SEDGWICK COUNTY, KANSAS



BENCH MARK: CITY OF WICHITA STD. DISC  
31.5' S. & 38.0' E. OF CENTERLINE INTERSECTION  
OF MAIZE ROAD & MAY STREET  
ELEV. = 1323.51 NGVD

MINIMUM BUILDING PAD FOR LOWEST OPENING  
INTO STRUCTURES: 1.325 NGVD

- △ = 1/2" REBAR - SECTION CORNER (FOUND)
- = 1/2" IRON PIPE (FOUND)
- = 1/2" REBAR W/SRB CAP (SET)

BUILDING SETBACKS			
STRUCTURES		GARAGES AND CARPORTS ENTRANCES	
LARK	CARR	LARK	CARR
20'	15'	20'	20'

State of Kansas) SS  
Sedgwick County)

We, Savoy, Ruggles & Bohm, P.A., Surveyors in aforesaid county and state do hereby certify that, under the supervision of the undersigned, we have surveyed and platted "COLLINS FIRST ADDITION", Wichita, Sedgwick County, Kansas and that the accompanying plat is a true and correct exhibit of the property surveyed, described as:

A tract of land in the NE1/4 of Sec. 31, Twp. 27-S, R-1-W of the 6th P.M., Sedgwick County, Kansas, described as: Commencing at the N.E. Corner of said NE1/4; thence N89°42'30"W, along the north line of said NE1/4, 1259.65 feet; thence with a deflection angle left of 90°07', bearing S00°10'30"W, 1243.51 feet for a place of beginning; thence S00°10'30"W, 79.2 feet; thence S89°42'30"E, parallel with the north line of said NE1/4, 275 feet; thence N00°10'30"E, 79.2 feet; thence N89°42'30"W, 275 feet to the place of beginning.

Existing Public easements and dedications being vacated by virtue of K.S.A. 12-512(b).

Savoy, Ruggles & Bohm, P.A.

Date 23 October 2001  
  
 Mark A. Savoy, Surveyor  
 Mark A. Savoy, RLS #788

Know all men by these presents that we, the undersigned have caused the land described in the surveyor's certificate to be platted into Lots to be known as "COLLINS FIRST ADDITION", Wichita, Sedgwick County, Kansas. The utility easements are hereby granted as indicated for the construction and maintenance of all public utilities. Access Control is hereby granted to the appropriate governing body (as indicated on the face of the plat). A drainage plan has been developed for this plat and all drainage easements, and rights-of-way shall remain at established grades or as modified with the approval of the City Engineer, and unobstructed to allow for the conveyance of stormwater. Minimum building pad elevations are as shown on the face of the plat. The Floodway Reserve easement is hereby granted for floodway purposes, and shall be the responsibility of the owners of Lot 2, until such time as the governing body exercising jurisdiction elects to assume the responsibility for maintenance and improvement of drainage, provided further that no structures shall be constructed on or within said Floodway easement, nor shall any fill, change of grade, creation of channel or other work be carried on without the permission of the Engineer of the appropriate governing body.

Gregg E. Collins  
  
Pamela K. Collins

State of Kansas) SS  
Sedgwick County)

The foregoing instrument acknowledged before me, this 23<sup>rd</sup> day of October, 2001, by Gregg E. Collins and Pamela K. Collins, Husband and Wife.

Gary Max Whittle, Notary Public

My App't. Exp. May 18, 2004

We, the undersigned, holders of a mortgage on the above described property do hereby consent to this plat of "COLLINS FIRST ADDITION", Wichita, Sedgwick County, Kansas.

State Bank of Kingman

Gayle M. Whittle, Vice Pres.  
  
Nisha, Title

This plat of "COLLINS FIRST ADDITION", Wichita, Sedgwick County, Kansas, has been submitted to and approved by the Wichita-Sedgwick County Metropolitan Area Planning Commission, Wichita, Kansas.

Dated this \_\_\_\_\_ day of \_\_\_\_\_, 2001.

Wichita-Sedgwick County Metropolitan Area Planning Commission

\_\_\_\_\_  
Acting Chairman  
J.D. Michaelis

\_\_\_\_\_  
Secretary  
Marvin S. Krout

This plat approved and all dedications shown hereon, accepted by the City Council of the City of Wichita, Kansas, this \_\_\_\_\_ day of \_\_\_\_\_, 2001.

At the Direction of the City Council

\_\_\_\_\_  
City Manager  
Chris Cherches

\_\_\_\_\_  
City Clerk  
Pat Burnett

Reviewed in accordance with K.S.A. 58-2005 on this \_\_\_\_\_ day of \_\_\_\_\_, 2001.

\_\_\_\_\_  
Deputy County Surveyor  
Sedgwick County Kansas  
Tricia L. Robello, LS #1246

Entered on transfer record this \_\_\_\_\_ day of \_\_\_\_\_, 2001.

\_\_\_\_\_  
County Clerk  
Don Brace

State of Kansas) SS  
Sedgwick County)

This is to certify that this plat has been filed for record in the office of the Register of Deeds, this \_\_\_\_\_ day of \_\_\_\_\_, 2001, at \_\_\_\_\_ o'clock \_\_\_\_\_ M. and is duly recorded.

\_\_\_\_\_  
Register of Deeds  
Bill Meek

\_\_\_\_\_  
Deputy  
Linda Kizzire

State of Kansas) SS  
Sedgwick County)

The foregoing instrument acknowledged before me, this 23<sup>rd</sup> day of October, 2001, by Jacqueline C. Neal, Vice Pres., of State Bank of Kingman, on behalf of the Bank.

My App't. Exp. 2-14-2005  
  
Jacqueline C. Neal, Notary Public

JACQUELINE C. NEAL  
 NOTARY PUBLIC  
 STATE OF KANSAS  
 My Appt. Exp. 2-14-2005