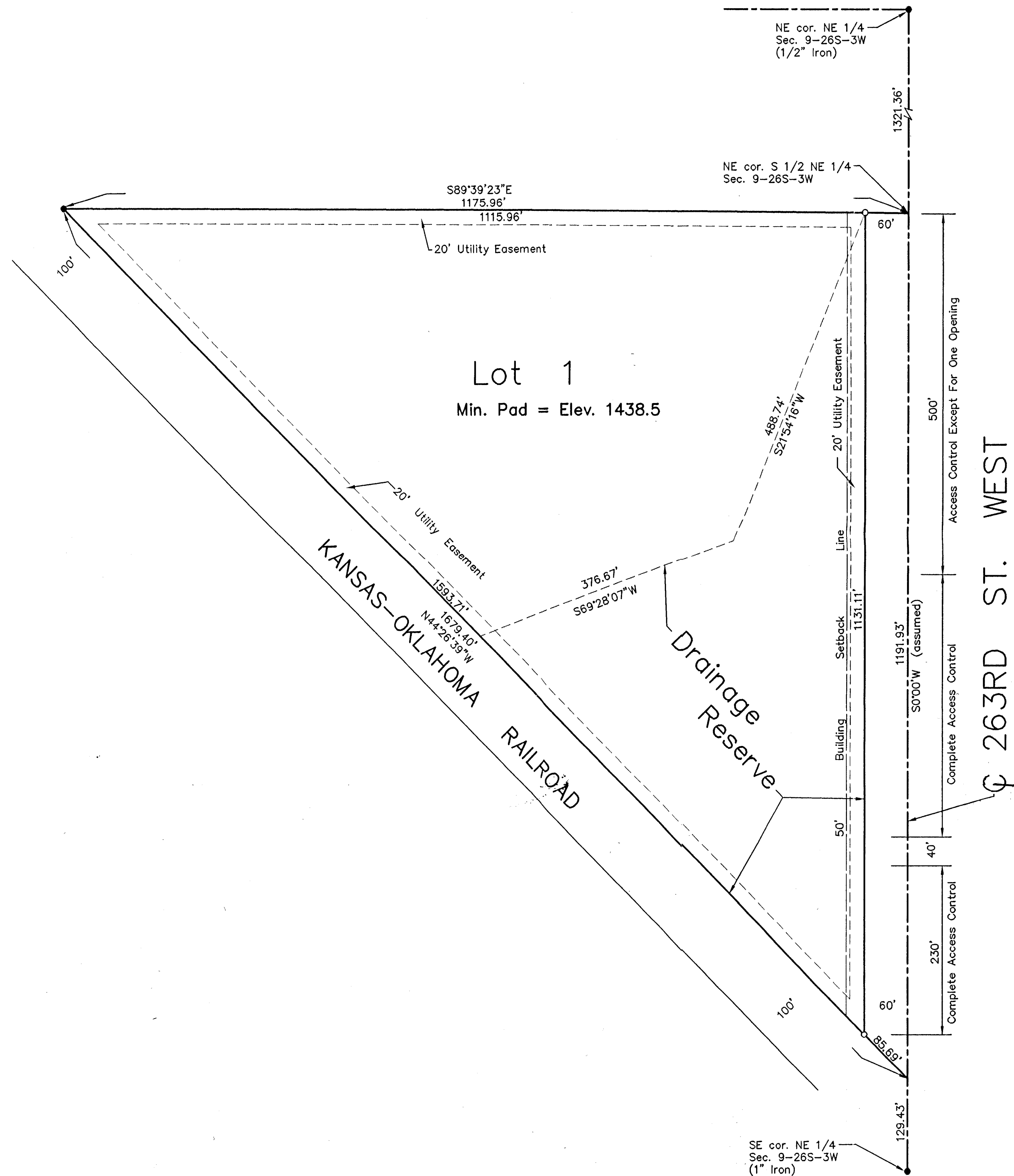
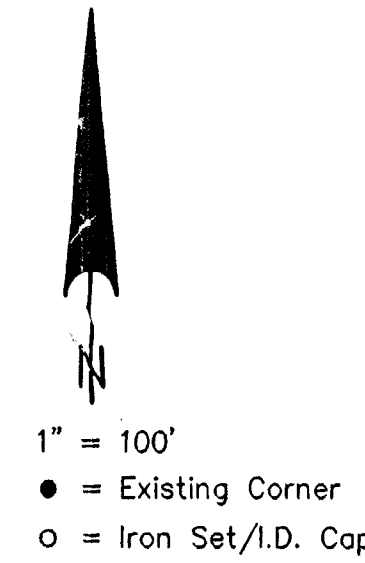


Sept 17/03

B.E.M. HEIN ACRES, SEDGWICK COUNTY, KANSAS.



B.M. = Elev. 1439.16 =
"□" on NW Hbgd. of Bridge
along 263rd St. West, and
caption property.



This plat approved and all dedications shown hereon, if any, accepted by the Board of County Commissioners of Sedgwick County, Kansas, this ____ day of _____ 2003.

Tim R. Norton Chair

ATTEST:

Don Brace County Clerk

Entered on transfer record this ____ day of _____ 2003.

Don Brace County Clerk

State of Kansas, County of Sedgwick, SS.
This is to certify that this instrument was filed for record in the Register of Deeds Office, at ____ o'clock, ____ m., on the ____ day of _____ 2003.

Bill Meek Register of Deeds

Linda Kizzire Deputy

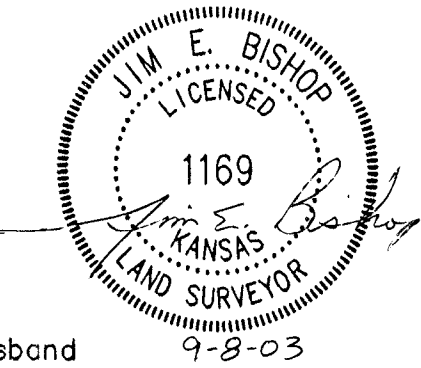
Reviewed in accordance with _____ on this 3rd day of September 2003.

Tricia L. Robello, L.S. 1246 Deputy County Surveyor, Sedgwick County, Kansas.

State of Kansas, County of Sedgwick, SS.

I, Jim E. Bishop, Land Surveyor in the State of Kansas, do hereby certify that I have surveyed and platted "B.E.M. HEIN ACRES", Sedgwick County, Kansas, and that the accompanying plat is a true and correct exhibit of said survey described as follows: That part of the South Half of the Northeast Quarter of Section 9, Township 26 South, Range 3 West of the Sixth Principal Meridian, Sedgwick County, Kansas, lying East of the Missouri Pacific Railroad Right-of-Way, more particularly described as: Beginning at the Northeast corner of said South Half; thence South along the East line of said South Half with assumed bearing of South 0 degrees 00'00" West, a distance of 1191.93 feet to said Right-of-Way line; thence North 44 degrees 26'39" West on said Right-of-Way line, a distance of 1679.40 feet to a point on the North line of said South Half; thence South 89 degrees 39'23" East on said North line, a distance of 1175.96 feet to the point of beginning.

Jim E. Bishop, L.S. 1169



Know all men by these presents that we, Bernard M. Hein and Elizabeth M. Hein, husband and wife, have caused the land described in the Land Surveyor's certificate to be platted into a lot to be known as "B.E.M. HEIN ACRES", Sedgwick County, Kansas. Utility easements as indicated on the plat are hereby granted for the construction and maintenance of all public utilities.

A drainage plan has been developed for the plot and that the drainage easement shall remain at established grade or as modified with the approval of the applicable City or County Engineer, and unobstructed to allow for the conveyance of stormwater.

The Minimum Pad Elevation for the lowest opening to the structures shall be as indicated on the face of the plat.

All abutter's rights of access to or from 263rd St. West, over and across the north 500 feet of Lot 1, are hereby granted to the appropriate governing body, provided, however, that the north 500 feet of Lot 1 shall have access to 263rd St. West at one location to be designated by the appropriate governing body.

All abutter's rights of access to or from 263rd St. West, EXCEPT the north 500 feet of Lot 1, and EXCEPT the north 40 feet of the south 270 feet of Lot 1, are hereby granted to the appropriate governing body.

The Drainage Reserve is hereby granted for drainage purposes. No building shall be constructed on or within said Drainage Reserve; nor shall any fill, change of grade, creation of channel or other work be carried on without the permission of the appropriate governing body, with such permission of said appropriate governing body, additional improvements and/or activities may be permitted within said Drainage Reserve.

Bernard M. Hein
Bernard M. Hein

Elizabeth M. Hein
Elizabeth M. Hein

State of Kansas, County of Sedgwick, SS.

The foregoing instrument was acknowledged before me this 7th day of September 2003 by Bernard M. Hein and Elizabeth M. Hein, husband and wife.

Belinda Bishop
Belinda Bishop, Notary Public

My Commission Expires: Sept 15, 2004



This plat of "B.E.M. HEIN ACRES", Sedgwick County, Kansas, has been submitted to and approved by the Wichita-Sedgwick County Metropolitan Area Planning Commission, Wichita, Kansas.

Dated this ____ day of _____ 2003.

Wichita-Sedgwick County Metropolitan Area Planning Commission

Bernard A. Hentzen Chair

John L. Schlegel Secretary