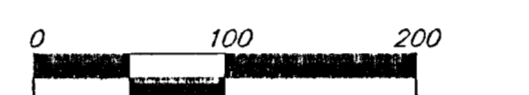
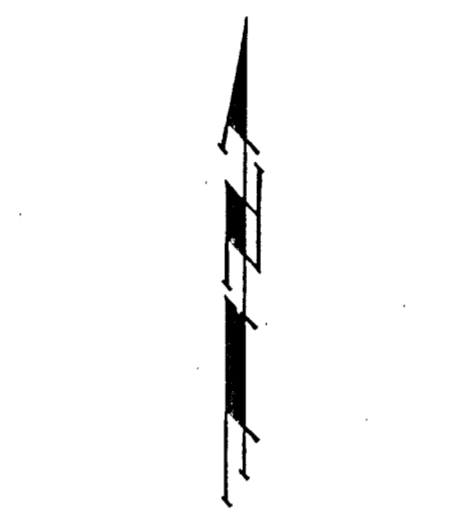
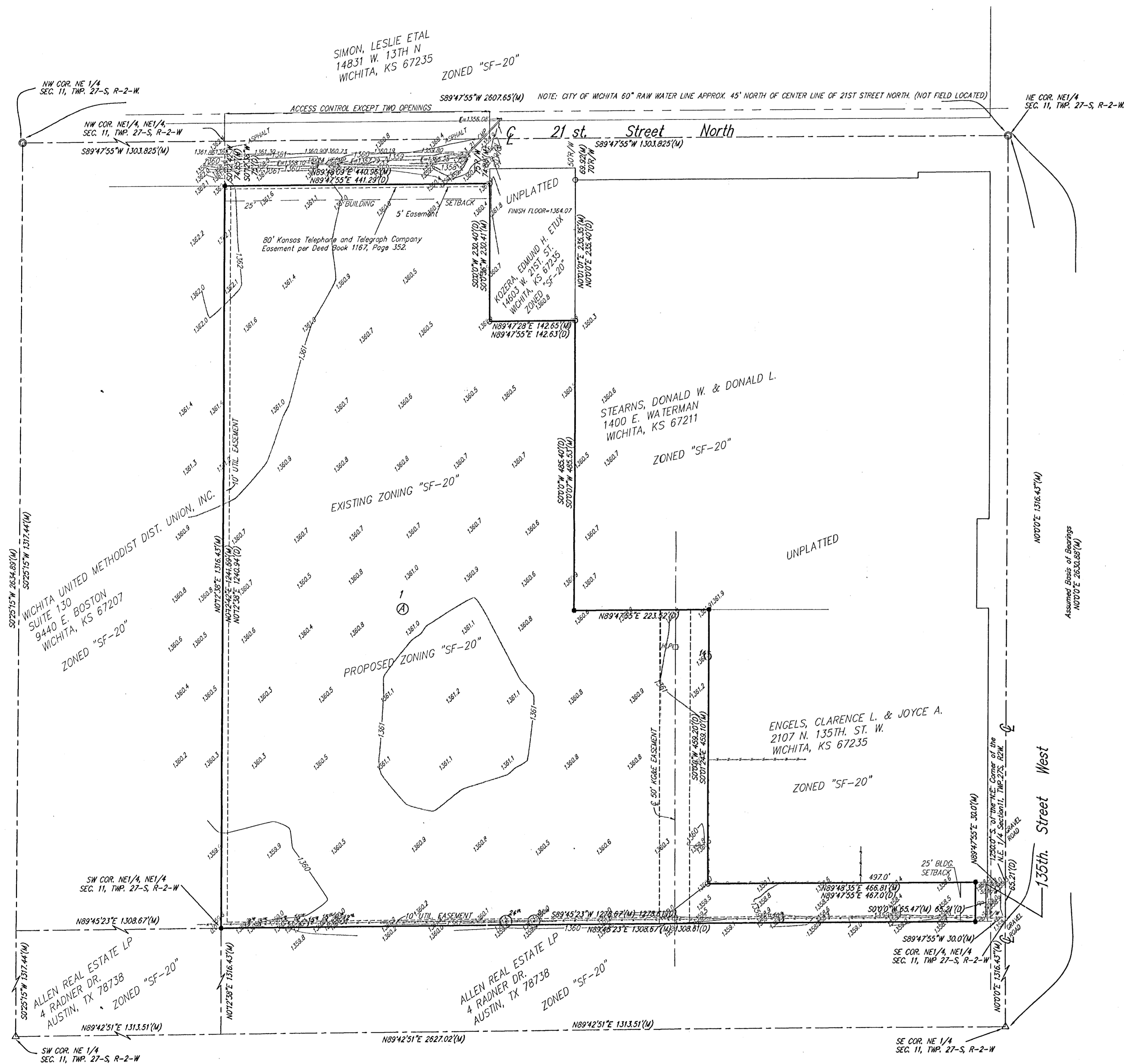


PRELIMINARY PLAT  
**BELIEVER'S SOUTHERN BAPTIST CHURCH ADDITION**  
 SEDGWICK COUNTY, KANSAS



DATE OF PREPARATION: 12 MARCH 2001  
 CONTOUR INTERVAL = 1 FOOT  
 DATE OF TOPOGRAPHY: 15 DECEMBER 2000

- = #4 Baughman Rebar (Set)
- = 1/2" Iron Pipe (Found)
- △ = Section Corner 7/16" Stone (Found)
- = Section Corner 3/4" Iron Pipe in Thimble (Found)
- (M) = Measured
- (D) = Described
- R/W = Rights-of-Way
- HLP = High Line Pole
- pp = Power Pole
- T = Tree

**OWNER:**  
 Believer's Southern Baptist Church  
 Attn. Don Stearns, Jr.  
 1400 E. Waterman  
 Wichita, Kansas 67211  
 (316) 269-9090

**LEGAL DESCRIPTION:**  
 Beginning at a point 75.00 feet south of the NW corner of said NE 1/4 of the NE 1/4 of Sec. 11; thence east parallel with the north line of said NE 1/4, a distance of 441.29 feet; thence south parallel with the east line of said NE 1/4, a distance of 230.40 feet; thence east parallel with the north line of said NE 1/4, a distance of 142.63 feet; thence south parallel with the east line of said NE 1/4, a distance of 485.40 feet; thence east parallel with the north line of said NE 1/4, a distance of 223.52 feet; thence south parallel with the east line of said NE 1/4, a distance of 459.20 feet; thence east parallel with the north line of said NE 1/4, a distance of 497.00 feet to a point in the east line of said NE 1/4 said point being 1250.0 feet south of the NE corner of said NE 1/4; thence south along the east line of said NE 1/4 to the SE corner of the NE 1/4 of the NE 1/4 of said Sec. 11; thence west along the south line of the NE 1/4 of the NE 1/4 of said Sec. 11, a distance of 1308.61 feet to the SW corner of the NE 1/4 of the NE 1/4 of said Sec. 11; thence north 1240.94 feet to the point of beginning. Subject to road rights-of-way.

**BENCHMARK:**  
 COW benchmark located at 49' south of center line of 21st and 43' west of center line of 135th St.  
 Elev. = 1356.59 N.G.V.D.

Parcel Contains 844,420.82 Sq. Ft. or 19.385 Gross Acres more or less.  
 Contains 842,457.21 Sq. Ft. or 19.34 Net Acres more or less.

**NOTE:** Easement, if any, to the Sedgwick County Electric Cooperative Association, Inc., notice of which is given by the instrument filed in Book Misc. 472, Page 235.

