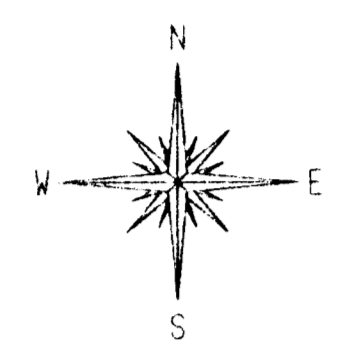


PRELIMINARY PLAT OF BECKER ADDITION, SEDGWICK COUNTY, KANSAS



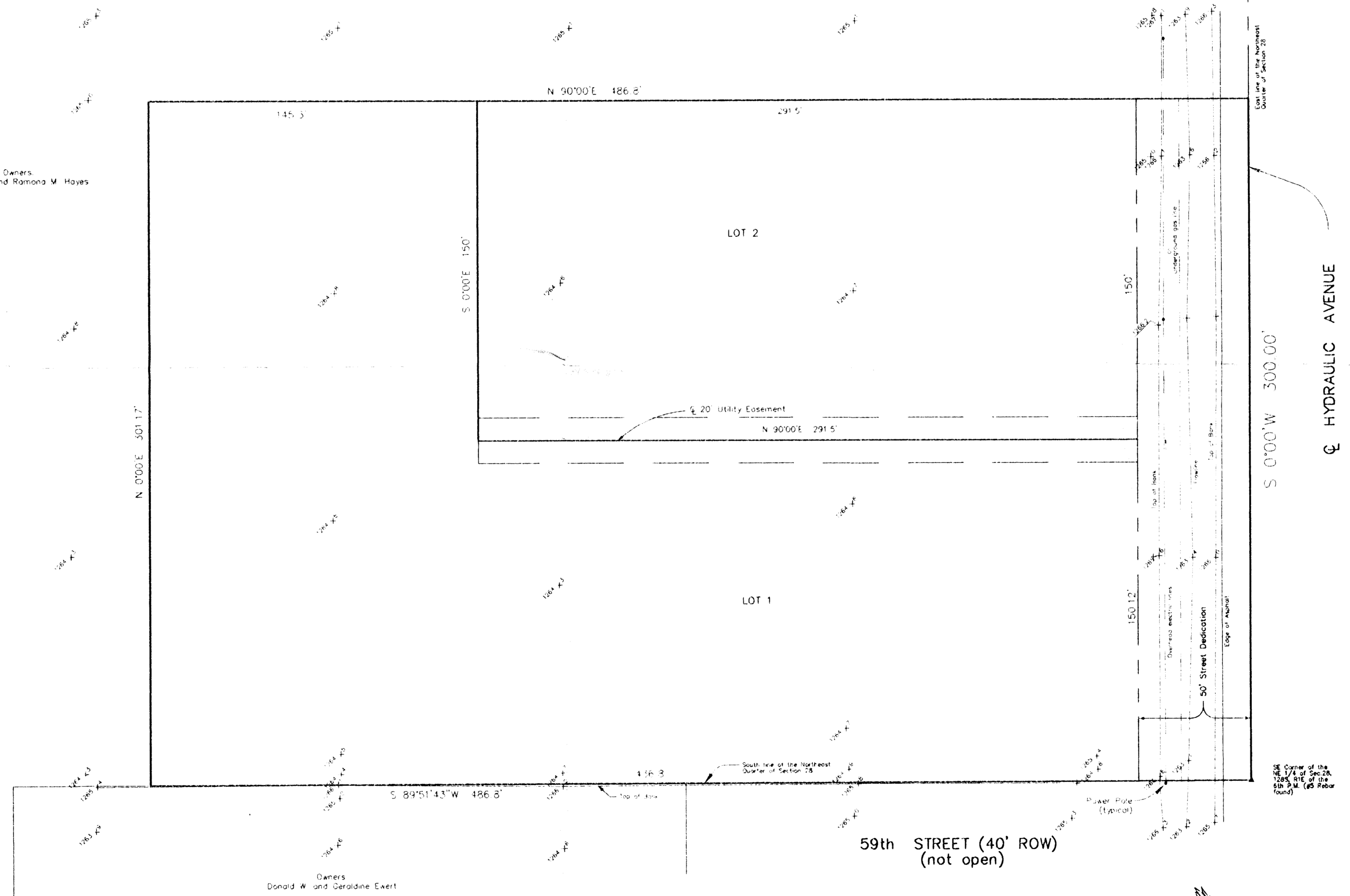
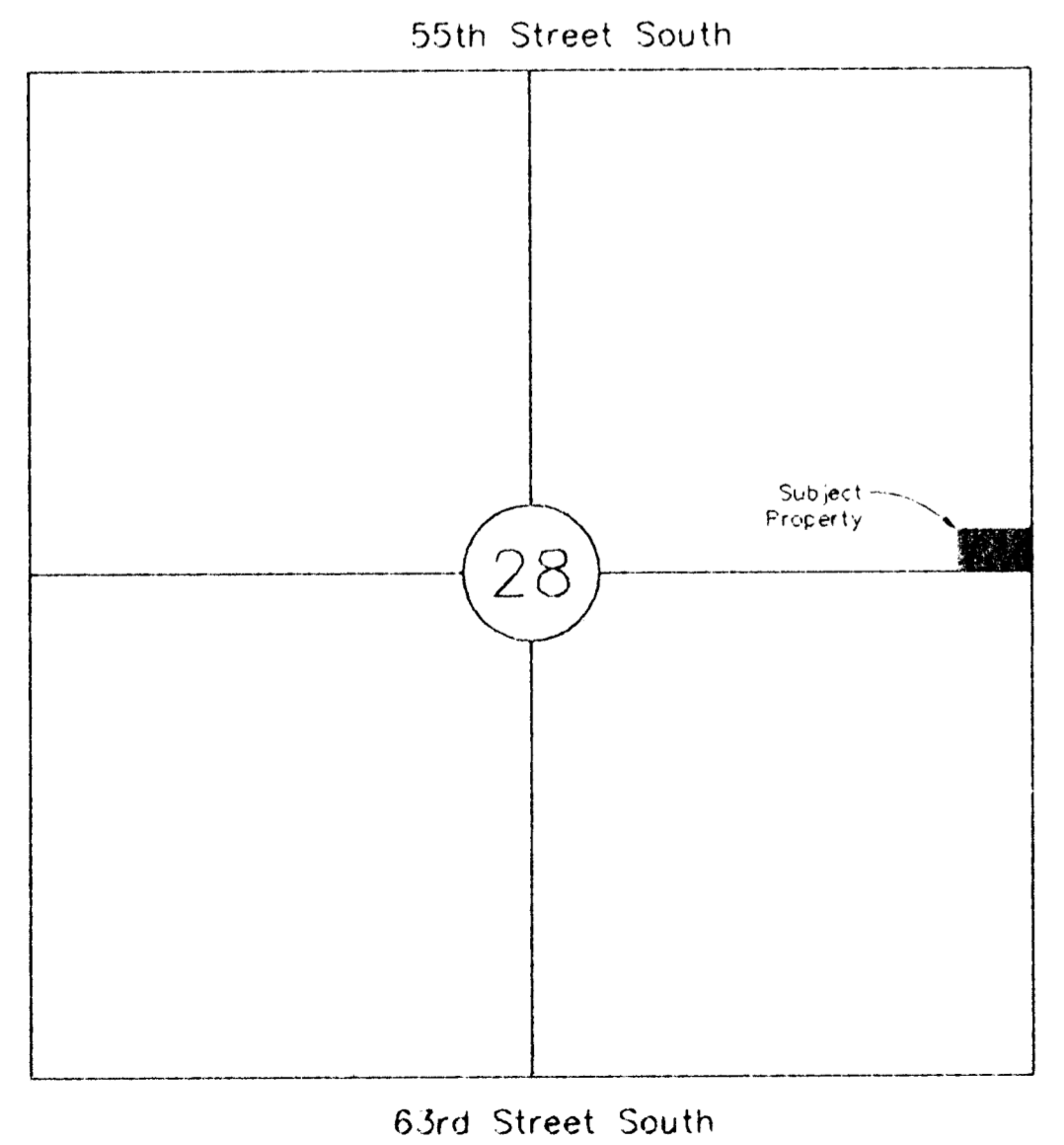
SCALE: 1" = 30'

Owners:
Donald R. and Ramona M. Hayes

Date of Topography: April 2, 1998

Zoning:
Lot 1--SF-20
Lot 2--GC
See associated Zoning Case SCZ-0760

Benchmark:
60d Step in HLP, 39' West of East Quarter
corner of Section 28
Elevation 1266.56 MSL



Wat Hydraulic # 572

SCANNED



Griffiths & Associates, Inc.
Land Surveyors

438 N. Ohio
Wichita, KS 67214
(316) 267-2900
Fax (316) 262-0080