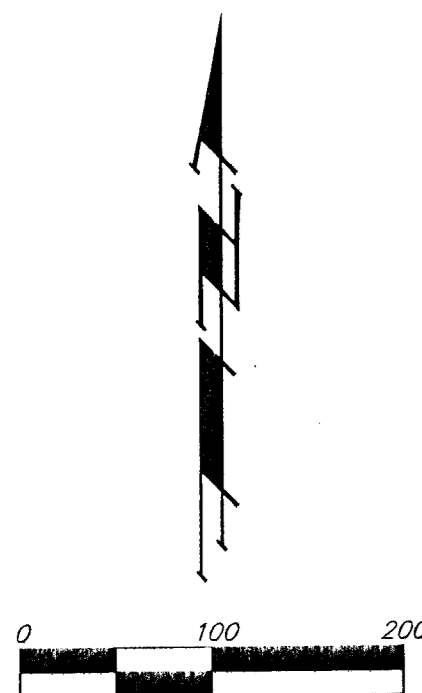
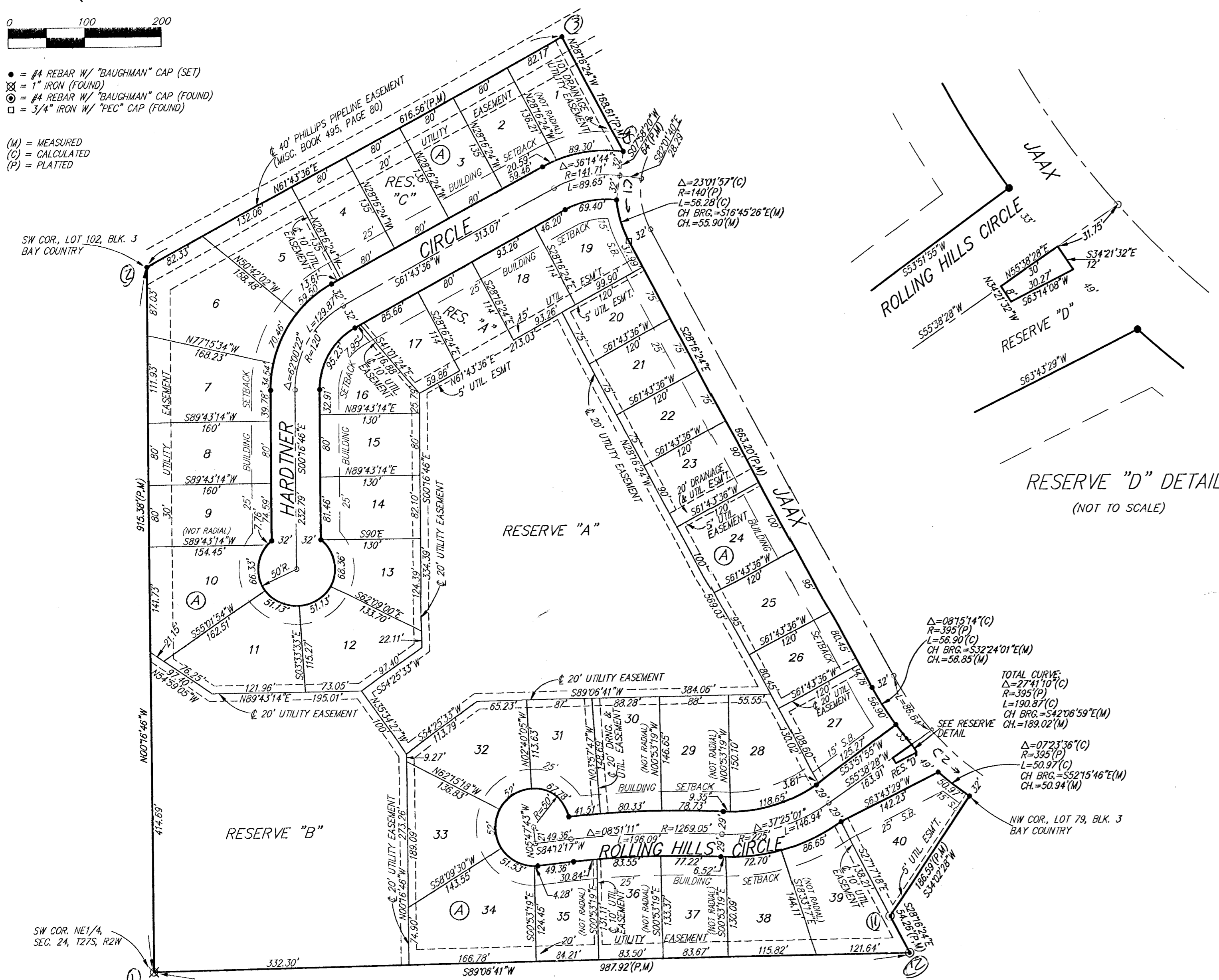


BAY COUNTRY 2ND ADDITION WICHITA, SEDGWICK COUNTY, KANSAS



- = #4 REBAR W/ "BAUGHMAN" CAP (SET)
- ⊗ = 1" IRON (FOUND)
- ⊙ = #4 REBAR W/ "BAUGHMAN" CAP (FOUND)
- ⊠ = 3/4" IRON W/ "PEC" CAP (FOUND)
- (M) = MEASURED
- (C) = CALCULATED
- (P) = PLATED



RESERVE "D" DETAIL
(NOT TO SCALE)

MINIMUM BUILDING PAD ELEVATION FOR LOWEST OPENING TO THE STRUCTURES			
LOTS	BLOCK	ELEVATION	
		CITY DATUM	MSL
1-6	A	148.6	1,336.0
7-30	A	140.6	1,328.0

BENCHMARK:
"C" CUT - TOP OF CURB, 14.5'± SOUTH OF THE
SW COR. OF LOT 37, BLOCK 4, BAY COUNTRY.
ELEV. = 142.49 CITY DATUM
1329.88 M.S.L.

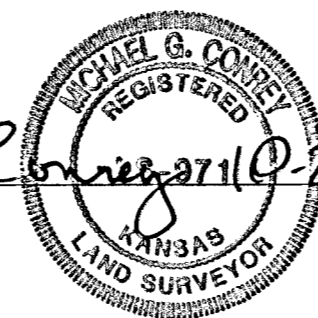
State of Kansas) SS We, Baughman Company, P.A., Surveyors in
Sedgwick County) aforesaid County and State do hereby certify that we have surveyed
and platted "BAY COUNTRY 2ND ADDITION", Wichita, Sedgwick County,
Kansas, and that the accompanying plat is a true and correct exhibit
of the property surveyed, described as follows: A replat of Lots 53,
54, 55, 56, 57, 58, 59, 60, 61, 62, 63, 64, 65, 66, 67, 68, 69, 70,
71, 72, 73, 74, 75, 76, 77, and 78, Block 3, TOGETHER with all of
Reserve "C" and together with that part of Reserve "D" lying between
said Lots 56 and 57, in said Block 3, and together with Hardtner Circle,
all in Bay Country, an Addition to Wichita, Sedgwick County, Kansas.

All being situated in the NE1/4 of Sec. 24, Twp. 27-S,
R-2-W of the 6th P.M., Sedgwick County, Kansas.

Existing public easements and dedications being vacated by virtue
of K.S.A. 12-512(b).

Baughman Company, P.A.

Michael G. Conrey
Michael G. Conrey



Know all men by these presents that we,
the undersigned, have caused the land in the surveyors certificate to
be platted into Lots, a Block, Streets, and Reserves, to be known as
BAY COUNTRY 2ND ADDITION, Wichita, Sedgwick County, Kansas. The
utility easements are hereby granted as indicated for the construction
and maintenance of all public utilities. The drainage and utility ease-
ments are hereby granted as indicated for drainage purposes and for
the construction and maintenance of all public utilities. The streets
are hereby dedicated to and for the use of the public. Reserve "A"
is hereby reserved for open space, drainage purposes, gazebos, ponds,
sidewalks, landscaping and utilities as confined to easements. Reserve "B"
is hereby reserved for drainage, landscaping, irrigation systems, pedestrian
improvements, and utilities as confined to easements. Reserve "C" is
hereby reserved for drainage purposes and utilities as confined to ease-
ments. Reserve "D" is hereby reserved for street purposes, landscaping,
entry monuments, and utilities. Reserves "A", "B", "C", and "D" shall
be owned and maintained by the homeowners association for the addition.
The Minimum Building Pad Elevations for the lowest opening to the
structures shall be as indicated on the face of the plat.

I.T.J. Investments, Inc.

Irma N. Jacoby, President
Irma N. Jacoby

Bob Cook Homes, L.L.C.

D.K. Cook, member
D. K. COOK

William Arthur Starnes, Linda Lee Starnes
William Arthur Starnes Linda Lee Starnes

State of Kansas) SS The foregoing instrument acknowledged be-
fore me, this 27th day of OCTOBER, 1998, by Irma N. Jacoby,
President of I.T.J. Investments, Inc., on behalf of the corporation.

JUDITH M. TERHUNE, Notary Public
My App't. Exp. 11-7-2001

State of Kansas) SS The foregoing instrument acknowledged be-
fore me, this 27th day of OCTOBER, 1998, by
D.K. COOK, MEMBER of Bob Cook Homes, L.L.C., on
behalf of the company.

JUDITH M. TERHUNE, Notary Public
My App't. Exp. 11-7-2001

State of Kansas) SS The foregoing instrument acknowledged be-
fore me, this 29th day of OCTOBER, 1998, by William Arthur
Starnes and Linda Lee Starnes, husband and wife.

JUDITH M. TERHUNE, Notary Public
My App't. Exp. 11-7-2001

We, the undersigned, holders of a mortgage
on the above described property, do hereby consent to this plat of
"BAY COUNTRY 2ND ADDITION", Wichita, Sedgwick County, Kansas.

GARY K. BROWN, EXEC. V.P.
GARY K. BROWN

State of Kansas) SS The foregoing instrument acknowledged be-
fore me, this 30th day of OCTOBER, 1998, by
GARY K. BROWN, EXEC. VICE-PRESIDENT of Emprise Bank, on behalf
of the bank.

JUDITH M. TERHUNE, Notary Public
My App't. Exp. 11-7-2001

This plat of "BAY COUNTRY 2ND ADDITION", Wichita,
Sedgwick County, Kansas has been submitted to and approved by
the Wichita-Sedgwick County Metropolitan Area Planning Commission,
Wichita, Kansas.

Dated this _____ day of _____, 1998,
Wichita-Sedgwick County Metropolitan Area Planning Commission

Richard E. Lopez, Chairman

Marvin S. Krout, Secretary

This plat approved and all dedications
shown hereon accepted by the City Council of the City of Wichita,
Kansas, this _____ day of _____, 1998.

Bob Knight, Mayor

Pat Burnett, City Clerk

Entered on transfer record this _____ day
of _____, 1998.

James Alford, County Clerk

State of Kansas) SS This is to certify that this plat has been
filed for record in the office of the Register of Deeds, this _____ day
of _____, 1998, at _____ o'clock _____ M., and is duly recorded.

Bill Meek, Register of Deeds

Linda Kizzire, Deputy

We, the undersigned, holders of a mortgage
on the above described property, do hereby consent to this plat of
"BAY COUNTRY 2ND ADDITION", Wichita, Sedgwick County, Kansas.
Southwest National Bank

ROBERT E. HOOPES, PRESIDENT

State of Kansas) SS The foregoing instrument acknowledged be-
fore me, this 6th day of NOVEMBER, 1998, by
ROBERT E. HOOPES, PRESIDENT of Southwest National Bank,
on behalf of the bank.

JUDITH M. TERHUNE, Notary Public
My App't. Exp. 11-7-2001