

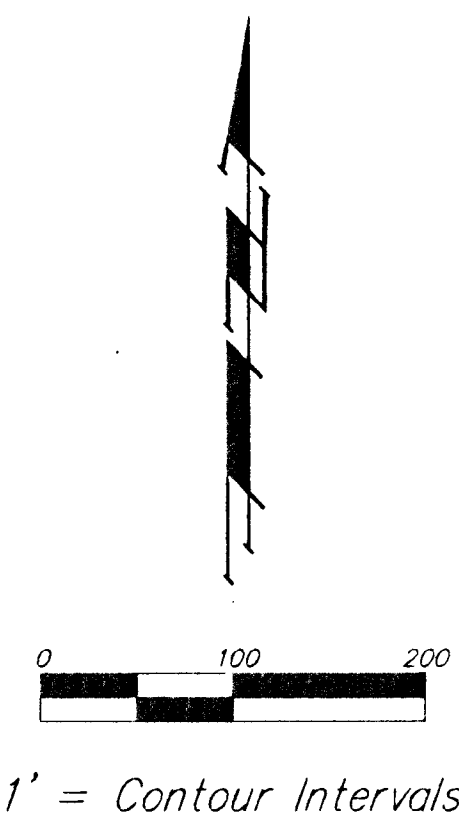
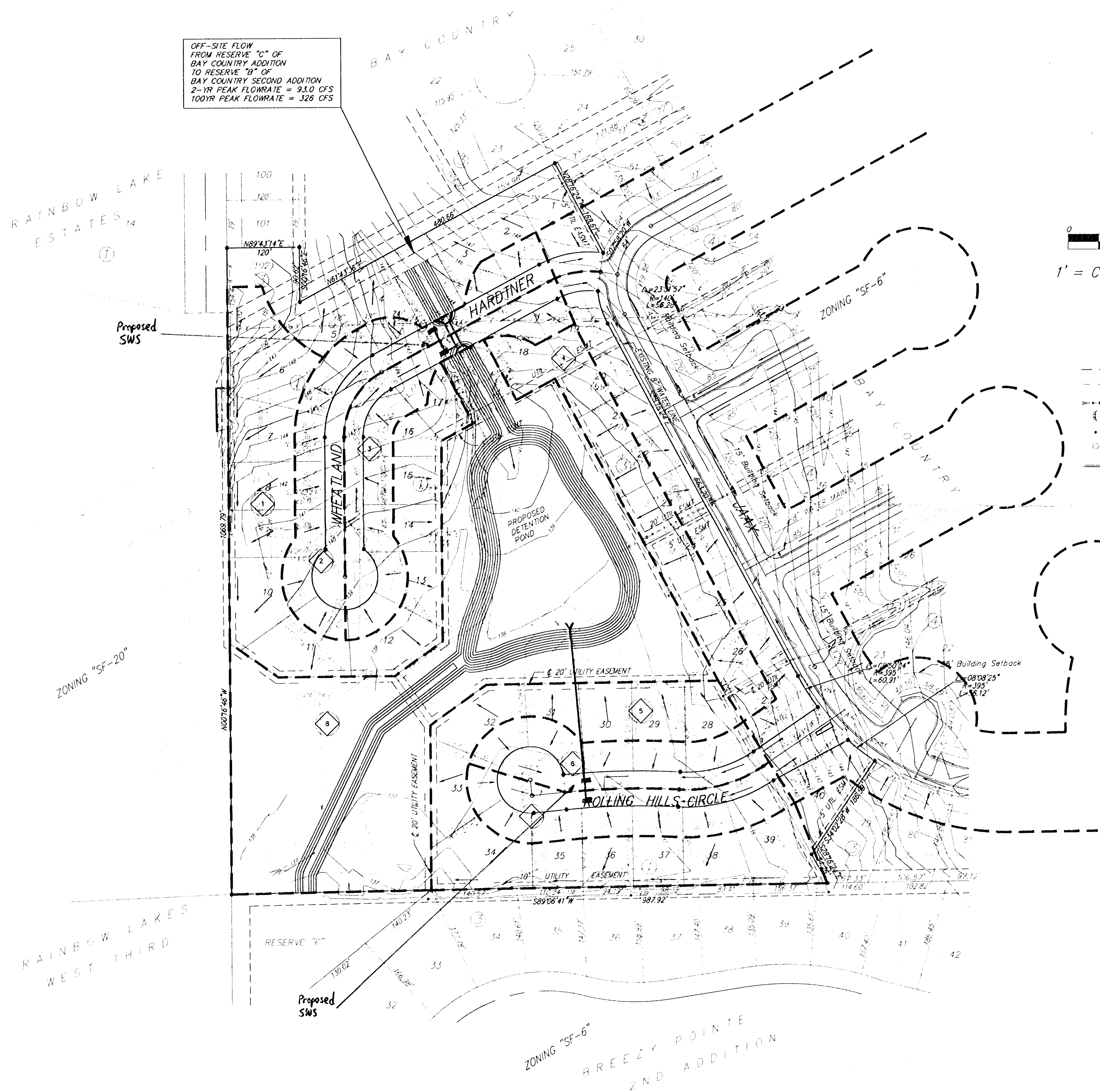
DRAINAGE CONCEPT

BAY COUNTRY 2ND ADDITION

WICHITA, SEDGWICK COUNTY, KANSAS

SCANNED

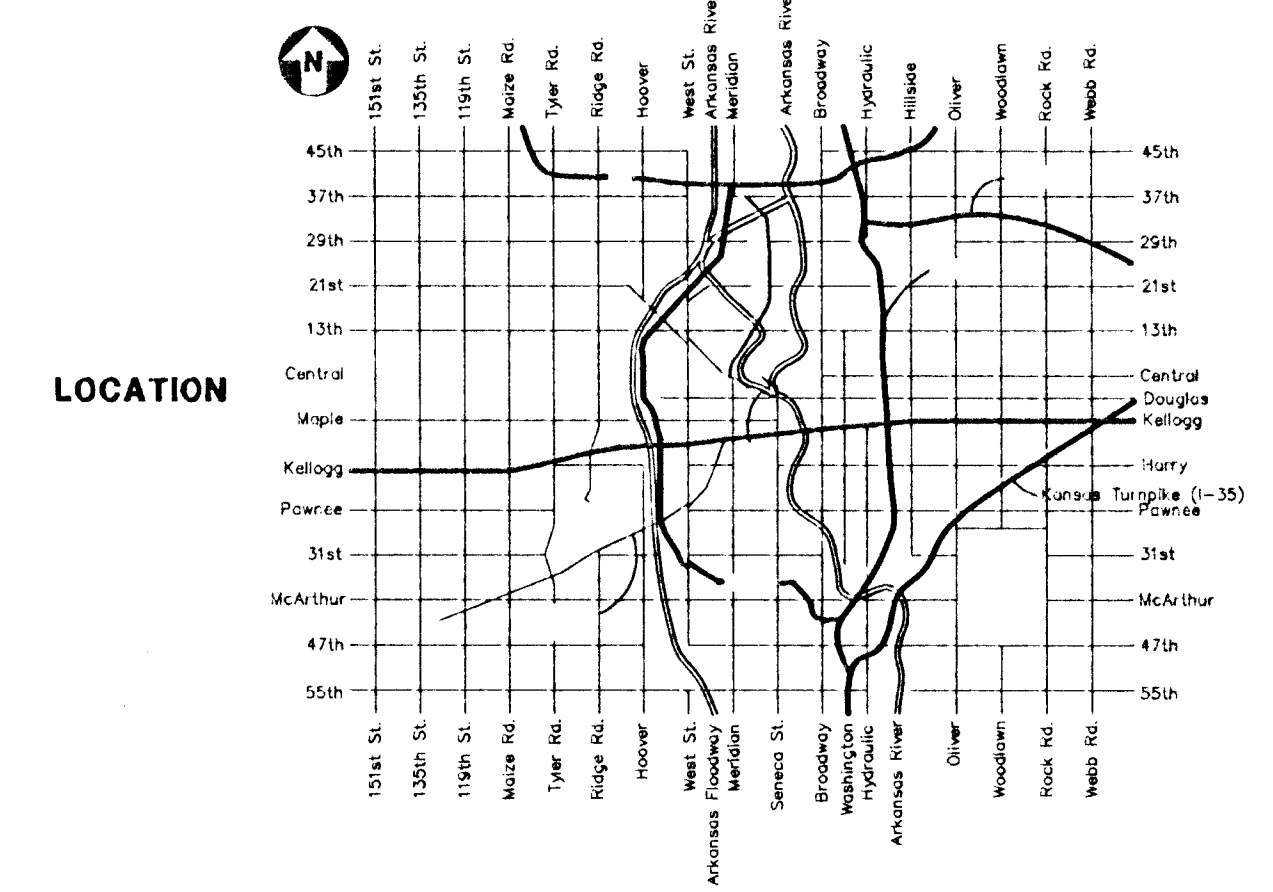
OFF-SITE FLOW FROM RESERVE "C" OF BAY COUNTRY ADDITION TO RESERVE "B" OF BAY COUNTRY SECOND ADDITION
 2-YR PEAK FLOWRATE = 93.0 CFS
 100YR PEAK FLOWRATE = 326 CFS



LEGEND

- WATER LINES
- SANITARY SEWER LINES
- STORM SEWER LINES
- CATCH BASIN
- SANITARY SEWER MANHOLES
- TREE
- CURB

Drainage Area	Area (Acres)	C _s	C _a	T _a (min)	L _a (ft)	V _a (cfs/ft)	Q _a (cfs)	Q _p (cfs)
1	2.6	0.50	0.50	15	3.83	7.36	5.0	9.6
2	1.5	0.54	0.54	15	3.83	7.36	3.1	6.0
3	1.2	0.54	0.54	15	3.83	7.36	2.5	4.8
4	1.3	0.54	0.54	15	3.83	7.36	2.7	5.2
5	2.5	0.50	0.50	15	3.83	7.36	4.8	9.2
6	1.3	0.54	0.54	15	3.83	7.36	1.9	3.6
7	1.0	0.54	0.54	15	3.83	7.36	2.1	4.0
8	6.6	0.60	0.60	15	3.83	7.36	15.2	29.1



19 DECEMBER 1997

BAUGHMAN COMPANY P. A.
 ENGINEERING & SURVEYING
 316/262-7271 • 515 ELLIS • WICHITA, KANSAS 67211

F:\HYDRO\DRCONC\BAY2P.DWG/blg