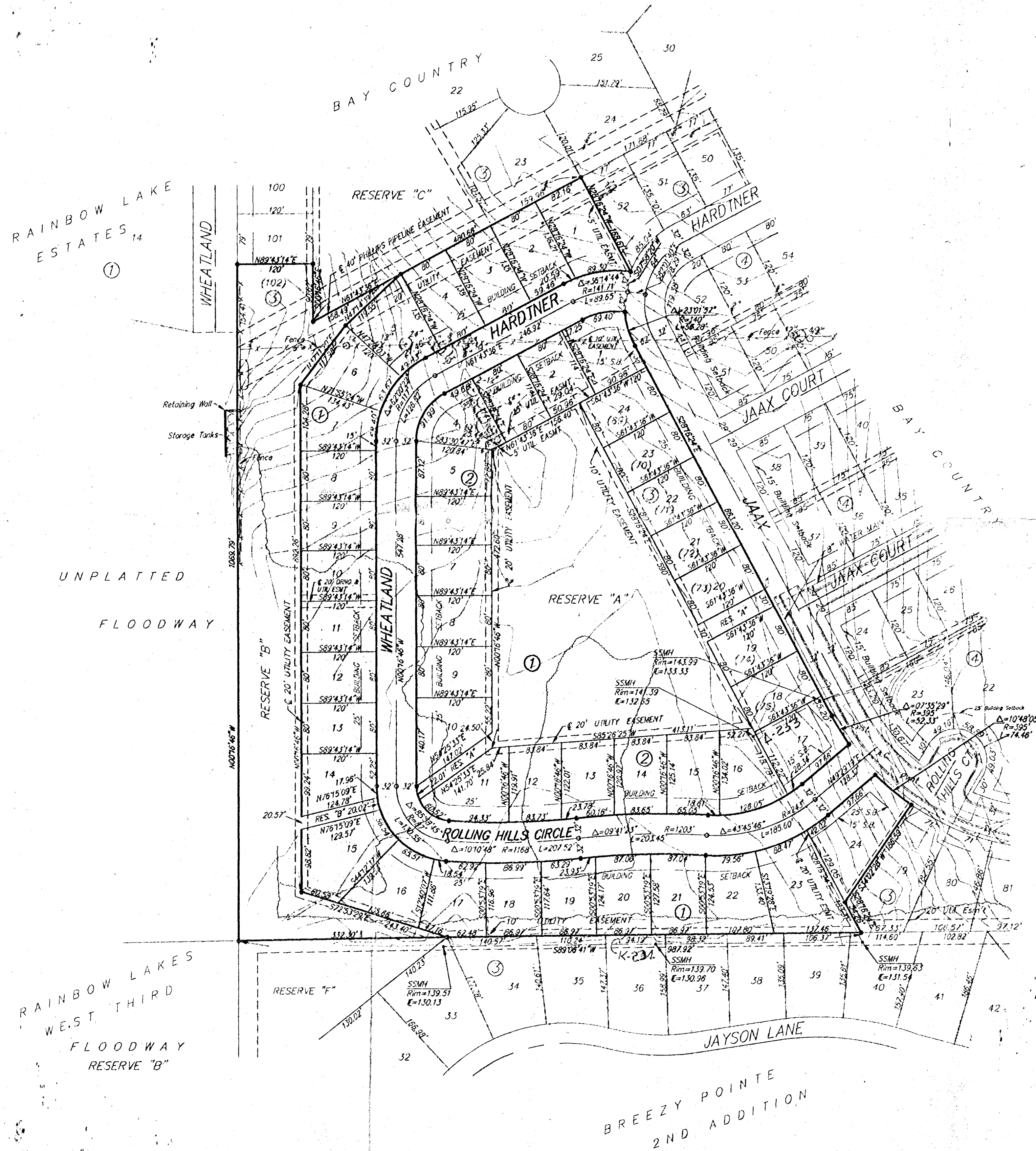


SCANNED **PRELIMINARY PLAT**  
**BAY COUNTRY 2ND ADDITION**  
**WICHITA, SEDGWICK COUNTY, KANSAS**



Scale: 1" = 100'  
 1' = Contour Intervals

OWNER:  
 RAY JACOBY  
 418 S. FORESTVIEW CT.  
 WICHITA, KANSAS 67235  
 PH. # 316-721-5844

LEGAL DESCRIPTION:  
 A REPLAT OF LOTS 53, 54, 55, 56, 57, 58, 59, 60, 61, 62, 63, 64,  
 65, 66, 67, 68, 69, 70, 71, 72, 73, 74, 75, 76, 77, 78, & 102, BLOCK 3,  
 TOGETHER WITH ALL OF RESERVE "C" AND TOGETHER WITH THAT PART OF  
 RESERVE "D" LYING BETWEEN SAID LOTS 56 & 57, IN SAID BLOCK 3, AND  
 TOGETHER WITH HARDNER CIRCLE, ALL IN BAY COUNTRY, AN ADDITION  
 TO WICHITA, SEDGWICK COUNTY, KANSAS.

BENCHMARK:  
 119TH ST. WEST & CENTRAL, CITY OF WICHITA DISC, 40' E. &  
 46" S. OF C BOTH; 58.82' S.E. OF SEC. COR. IRON; 21.7' W.  
 OF FACE OF WALK N/S; 13.6' N. OF WALK E/W.  
 ELEV. = 156.93 CITY DATUM