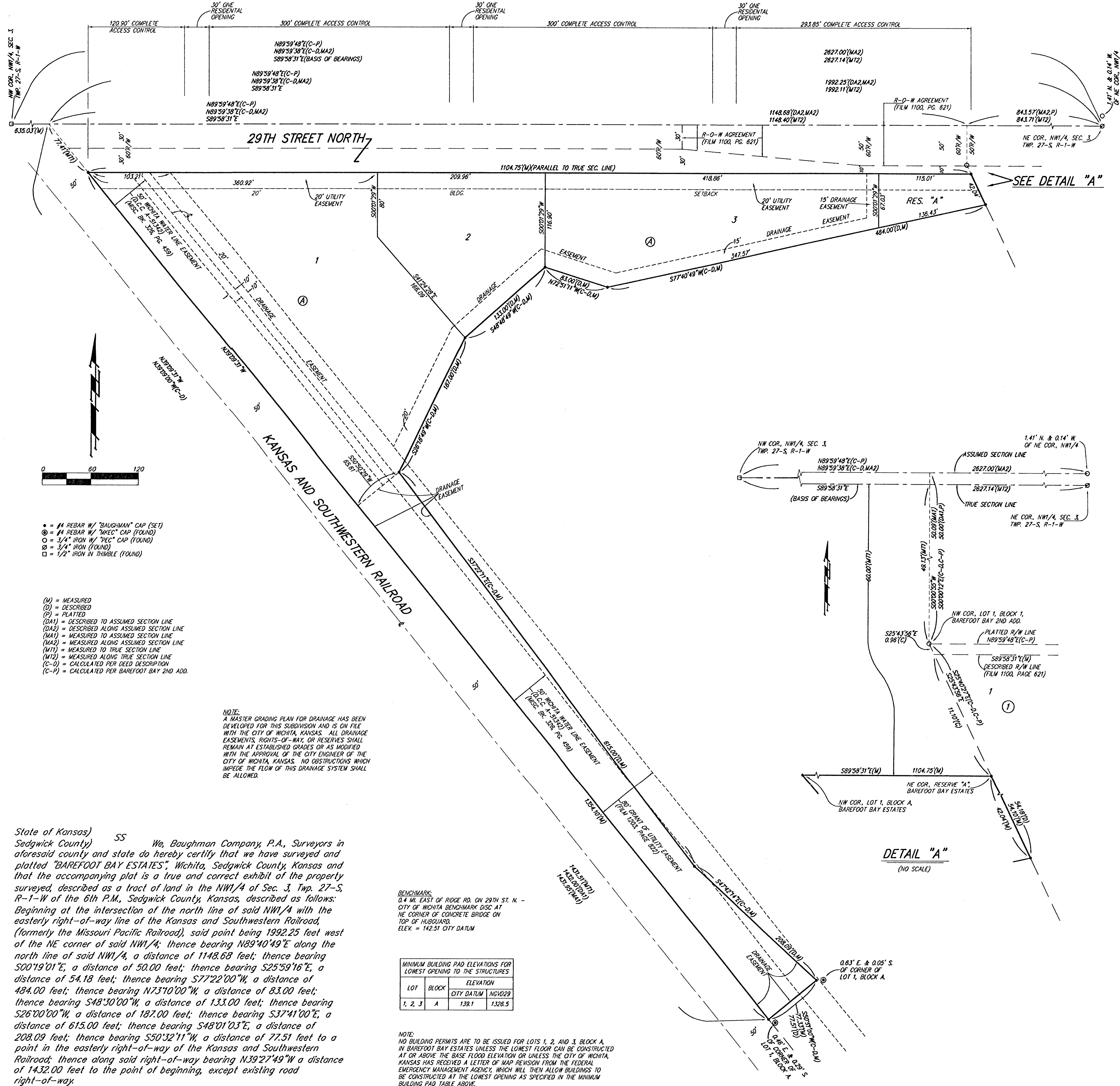


# BAREFOOT BAY ESTATES

## WICHITA, SEDGWICK COUNTY, KANSAS



State of Kansas) SS We, Baughman Company, P.A., Surveyors in  
Sedgwick County) and state do hereby certify that we have surveyed and  
platted "BAREFOOT BAY ESTATES", Wichita, Sedgwick County, Kansas and  
that the accompanying plat is a true and correct exhibit of the property  
surveyed, described as a tract of land in the NW1/4 of Sec. 3, Twp. 27-S,  
R-1-W of the 6th P.M., Sedgwick County, Kansas, described as follows:  
Beginning at the intersection of the north line of said NW1/4 with the  
easterly right-of-way line of the Kansas and Southwestern Railroad,  
(formerly the Missouri Pacific Railroad), said point being 1992.25 feet west  
of the NE corner of said NW1/4, then bearing N89°40'49"E along the  
north line of said NW1/4, a distance of 1148.68 feet; then bearing  
S00°19'01"E, a distance of 50.00 feet; then bearing S25°39'16"E, a  
distance of 54.18 feet; then bearing S77°22'00"W, a distance of  
484.00 feet; then bearing N73°10'00"W, a distance of 83.00 feet;  
then bearing S48°30'00"W, a distance of 1.33.00 feet; then bearing  
S26°00'00"W, a distance of 187.00 feet; then bearing S37°41'00"E, a  
distance of 615.00 feet; then bearing S48°01'03"E, a distance of  
208.09 feet; then bearing S50°32'11"W, a distance of 77.51 feet to a  
point in the easterly right-of-way of the Kansas and Southwestern  
Railroad; then along said right-of-way bearing N39°27'49"W a distance  
of 1432.00 feet to the point of beginning, except existing road  
right-of-way.

Existing public easements and dedications  
being vacated by virtue of K.S.A. 12-512(b).  
Baughman Company, P.A.

*Michael D. Conroy*  
Michael G. Conroy  
12-29-2003  
Surveyor

Know all men by these presents that we,  
the undersigned, have caused the land in the surveyors certificate to be  
platted into Lots, a Block, a Street, and a Reserve, to be known as  
"BAREFOOT BAY ESTATES", Wichita, Sedgwick County, Kansas. The utility  
easement is hereby granted as indicated for the construction and  
maintenance of all public utilities. The drainage easements are hereby  
granted as indicated for drainage purposes. The street is hereby  
dedicated to and for the use of the public. Reserve "A" is hereby  
reserved for drainage purposes, landscaping, open space, and utilities  
as confined to easement. Reserve "A" shall be owned and maintained  
by the owner of Lot 3, Block A. All abutters rights of access shall be  
as depicted on the face of the plat and are hereby granted to the  
City of Wichita, Kansas. The Minimum Building Pad Elevation for the  
lowest opening to the structures on Lots 1, 2, and 3, Block A, shall  
be 139.1 City Datum, (1326.5 NGVD29).

*Michael D. Shell*  
Michael D. Shell  
*Sandra D. Shell*  
Sandra D. Shell

State of Kansas) SS The foregoing instrument acknowledged before  
County) me, this \_\_\_\_\_ day of \_\_\_\_\_, 2003, by Michael D. Shell and  
Sandra D. Shell, husband and wife.  
MARY ROCHELLE  
Notary Public  
State of Kansas  
My Comm. Exp. 1-23-2007  
My App'l. Exp. \_\_\_\_\_  
MARY ROCHELLE, Notary Public

We the undersigned holders of a mortgage on the  
above described property, do hereby consent to this plat of "BAREFOOT  
BAY ESTATES", Wichita, Sedgwick County, Kansas.  
Conway Bank, f/k/a  
The First National Bank of Conway Springs

*Chris A. Anderson* EJP  
CHRIS A. ANDERSON

State of Kansas) SS The foregoing instrument acknowledged be-  
Sedgwick County) fore me, this 29th day of December, 2003, by Chris A. Anderson,  
Esq., Vice President of Conway Bank, f/k/a The First National Bank of  
Conway Springs, on behalf of the bank.

SUSAN K. MONETTE  
Notary Public - State of Kansas  
My App'l. Exp. 11-9-07  
Susan K. Monette, Notary Public

This plat of "BAREFOOT BAY ESTATES", to  
Wichita, Sedgwick County, Kansas has been submitted to and approved by  
the Wichita-Sedgwick County Metropolitan Area Planning Commission,  
Wichita, Kansas.  
Dated this \_\_\_\_\_ day of \_\_\_\_\_,  
Wichita-Sedgwick County Metropolitan Area Planning Commission

Ronald L. Marnell, Chair  
John L. Schlegel, Secretary

This plat approved and all dedications  
shown herein accepted by the City Council of the City of Wichita,  
Kansas, this \_\_\_\_\_ day of \_\_\_\_\_.

Carlos Mayans, Mayor  
Karen Schofield, City Clerk

Reviewed in accordance with K.S.A. 58-2005  
on this \_\_\_\_\_ day of \_\_\_\_\_.

Tricia L. Robello, L.S. #1246  
Deputy County Surveyor  
Sedgwick County, Kansas

Entered on transfer record this \_\_\_\_\_ day  
of \_\_\_\_\_.  
Don Brace, County Clerk

State of Kansas) SS This is to certify that this plat has been  
Sedgwick County) filed for record in the office of the Register of Deeds, this \_\_\_\_\_ day  
of \_\_\_\_\_ at \_\_\_\_\_ o'clock \_\_\_\_\_ M., and is duly recorded.  
Bill Meek, Register of Deeds  
Linda Kizzire, Deputy

BAUGHMAN COMPANY P.A.  
ENGINEERING, SURVEYING, & PLANNING  
318-202-7971 • 318 ELLIS • WICHITA, KANSAS 67211  
P:\PLAT\BAREFOOT BAY ESTATES\LONG\BAREFOOT.DWG